

EQUIPMENT No.

L(D+B)	24800
POOP 3/4 x 9 1/2 x 8 1/2 (mean)	549
FILE 3/4 x 27 (mean)	163
MIDSHIP HOUSE 1/2 x 4 1/2 x 7 1/2	156
" " 1/2 x 2 1/2 x 7 1/2	143
" " 1/2 x 2 1/2 x 7 1/2	143
POOP HOUSE 1/2 x 8 1/2 x 7 1/2	304
NUMERALS	26440

M.V. Nos. 757-760-762-3.

MIDSHIP SECTION, OIL TANKER.

TO CLASS 100A1, CARRYING PETROLEUM IN BULK.

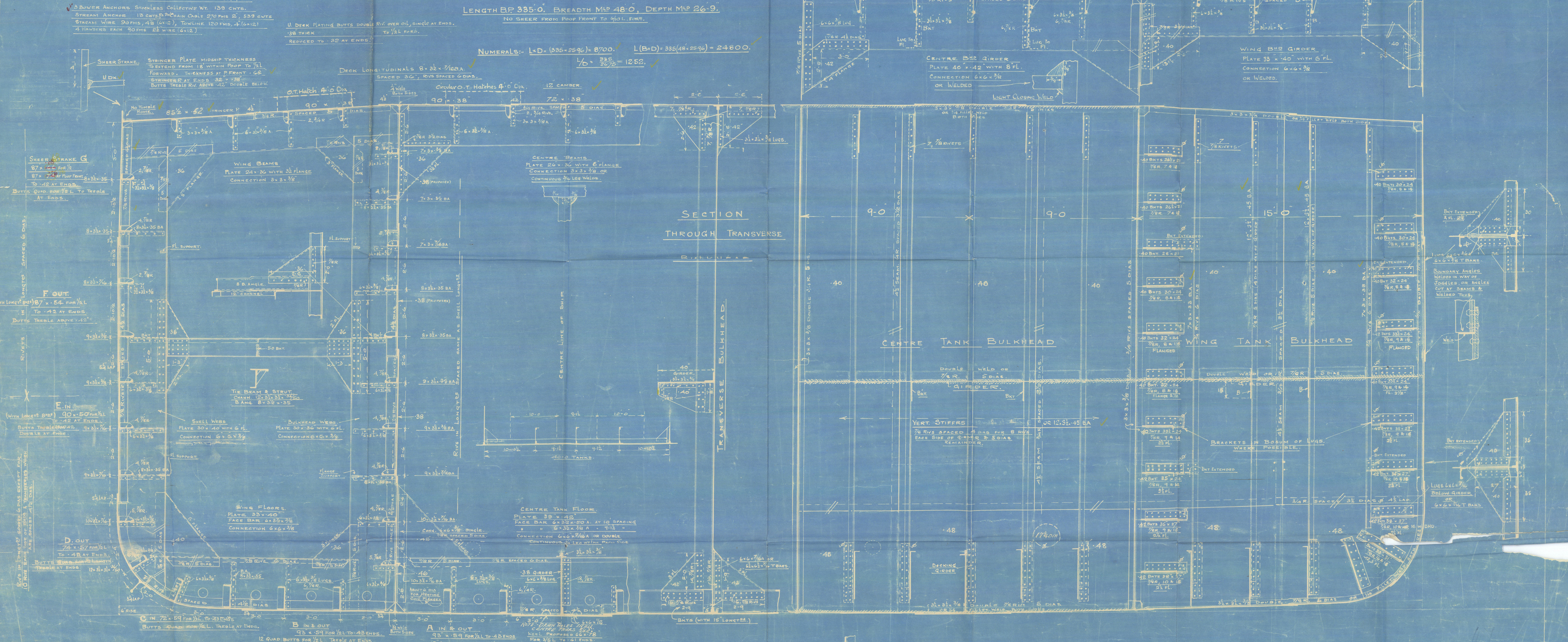
DIMENSIONS.

LENGTH BP 335'-0". BREADTH MLP 48'-0". DEPTH MLP 26'-9".

NO SHEER FROM POOP FRONT TO 1/2 L. FORK.

NUMERALS:- L(D+B) = (335 + 2596) = 8700. L(B+D) = 335(48 + 2596) = 24800.

L/D = 335 / 2596 = 12.52.



FREEBOARD PARTICULARS.

POOP 87'-6" AT SIDE 92'-0" CENTRE. HEIGHT AT FRONT 7'-6" & 9'-6" AT PERP.
 FILE 29'-0", HEIGHT 7'-6" (POOP FRONT NO OPENINGS, OR CLASS 1 COVERED).
 SHEER 5'-0" FORK, COMMENCING 1/2 L FROM PERP. NO SHEER AFT ON LUG.
 LENGTH FROM AXIS OF RUDDER 336'-0", FREEBOARD CORRR. 17.5.
 CAMBER 12" (SEE SECTION).

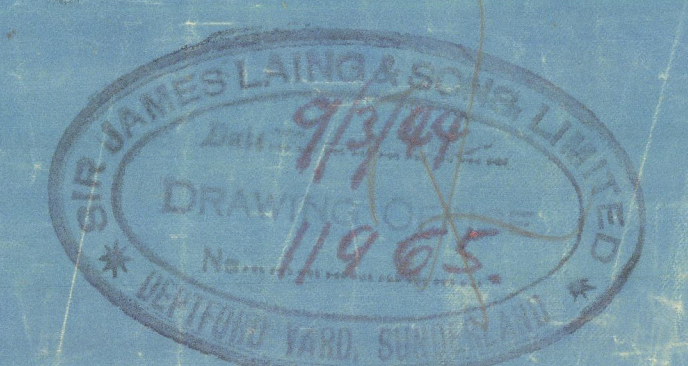
SECTION THROUGH TRANSVERSE

CENTRE TANK BULKHEAD

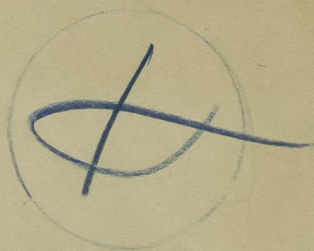
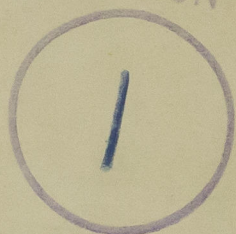
WING TANK BULKHEAD

DOCKING GIRDER

✓ All Bracket Attachment Angles to be extended at least 6" Beyond ends of Bracket Arms. Rivets & Angles to be rearranged to suit - to Surveyor's Satisfaction.




RECORDS DEPT.,
LONDON



SIR J LAINS & Son Ltd

YARD NOS 762/3

Bela 

MIDSHIP. SECTION

Midship Section



© 2020

Lloyd's Register
Foundation

002522-002528-0135

Sir J. Laing & Sons. Ltd
yard nos. 462+3.

midship section.

002522-002528-0135



© 2020

Lloyd's Register
Foundation