

TELEGRAMS:
"BOILER, WOLVERHAMPTON."

TELEPHONES:
BILSTON 491 (3 LINES)
TEMPLE BAR 3216 (3 LINES) LONDON

Codes Used:-

A.B.C 5TH & 6TH EDITIONS.
ENGINEERING, LIEBERS, PRIVATE.
WESTERN UNION, MARCONI.
SELL'S, BENTLEYS.

1455
A CENTURY OF BOILER MAKING

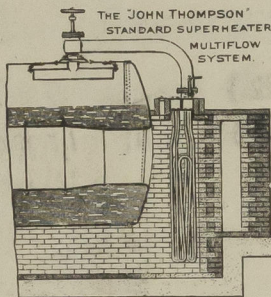
WOLVERHAMPTON,
Eng.



GOLD MEDALS
1891-92 AND 1910.

DIPLOMA FRANCO-BRITISH
EXHIBITION 1908.

**ALL TYPES OF BOILERS
AND
ACCESSORY PLANT.**



LONDON OFFICE,
IMPERIAL HOUSE,
KINGSWAY, W.C.2.

LANCASHIRE OFFICE,
108, NEWPORT ROAD,
CHORLTON-CUM-HARDY,
MANCHESTER.

YORKSHIRE OFFICE,
"WEST VIEW,"
OLD LANE,
BEESTON,
LEEDS.

Dr. to

Nearest Stations:-

L.M. & S.R. ETTINGSHALL ROAD. (2 MINUTES)
G.W.R. PRIESTFIELD. (10 MINUTES)

Messrs. Charles D. Holmes & Co Ltd.,

Hull Engineering Works, Hull.

26th. January.....

19 34.

YOUR ORDER No M.5677.

OUR ORDER No F.5697/9.

**3 Plain type Furnaces 3'6.1/2" outside
diameter x 7'2.5/8" long overall,
x 3'9.1/2" outside diameter at mouth,
with Stephen Gourlay Backends,
53/64" thick, for their reference**

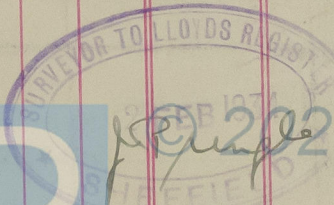
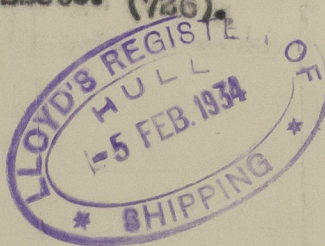
Boiler No.1455.

Plate Makers:- Messrs. The Appleby Iron Co Ltd., Scunthorpe.

Test particulars:-

2 Plates test No.22390. (A.600).

1 Plate 22390. (726).



002522-002528-0066

Working Pressure

211 lb/sq"

Main stays: Material

Steel

Tensile strength

28/