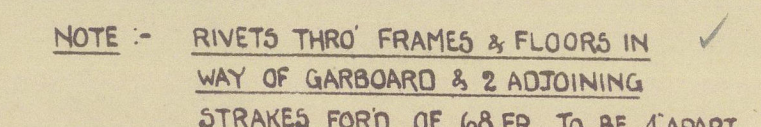


SCANTLING IN CRUISER STERN ✓
FRAMES 4" x 3" x 40" SPACED 21" APART. 18" BEAM KNEES ✓
FORE & AFT BEAMS 4" x 3" x 40" BKTD TO SHELL. 12 KNEES. ✓
FLOOR PLATES 34" REV FRAMES 3" x 3" x 34. ✓
34" INTERCOSTALS SINGLE LUGS TO FLOORS.

DIMENSIONS . 154' 0" B.P. x 25' - 6" B.M.L.D x 14' 9" D.M.L.D

SCALE $\frac{1}{4}$ " = 1 FOOT



COOK, WELTON & GEMMELL LTD
SHIPBUILDERS
BEVERLEY.

APPROVED BY LLOYD

27. IV, 33

Lloyd's Register
Foundation

002523-002528-0034

COOK WELTON & GEMHELL.

BEVERLEY.

Nº 590

AMENDED PROFILE & DECK.

Cook Welton

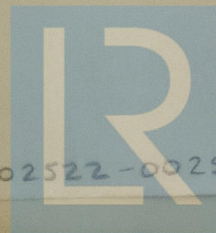
590

Amended Profile

y

~~*1842, 1843*~~

U.S.	"Brontes"
HULL NO.	44612.



© 2020

Lloyd's Register
Foundation

002522-002528-0034