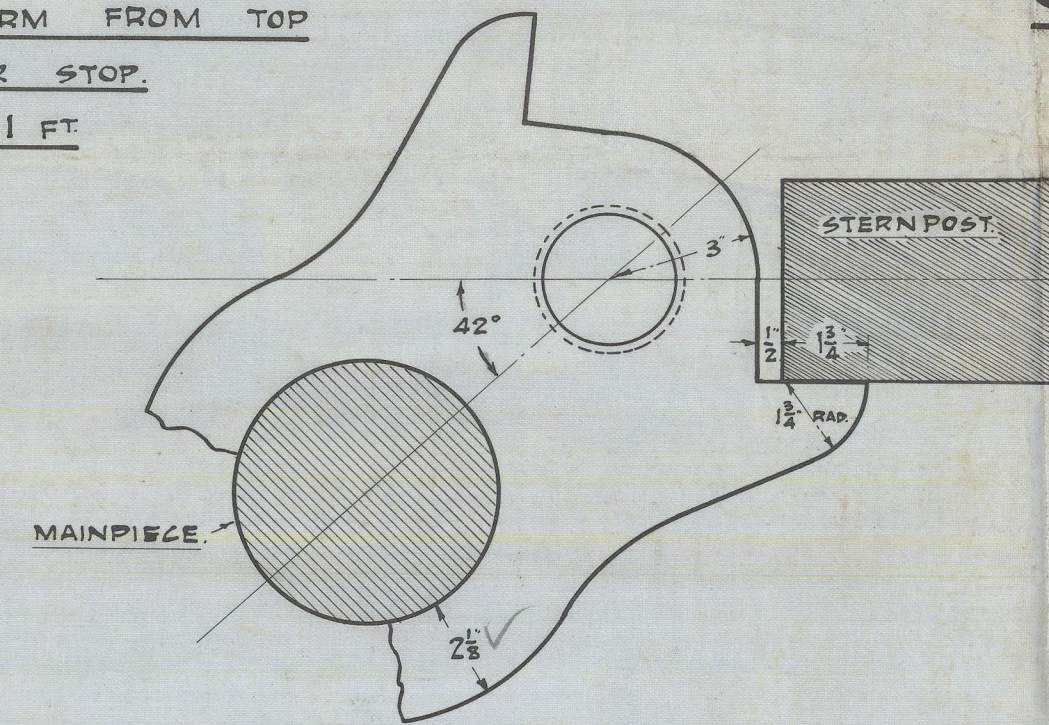


RUDDER & STERNPOST.

SCALES $\frac{1}{2}$ " & 3" = 1 FOOT.

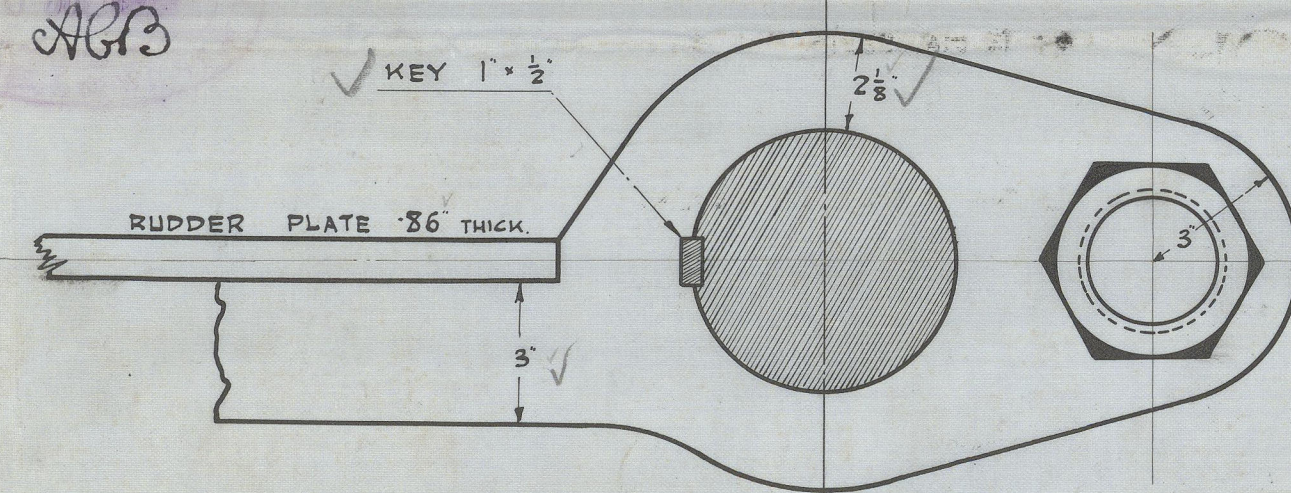
12.7.19

DETAIL OF 2ND ARM FROM TOP
TO ACT AS RUDDER STOP.
SCALE 3" = 1 FT.

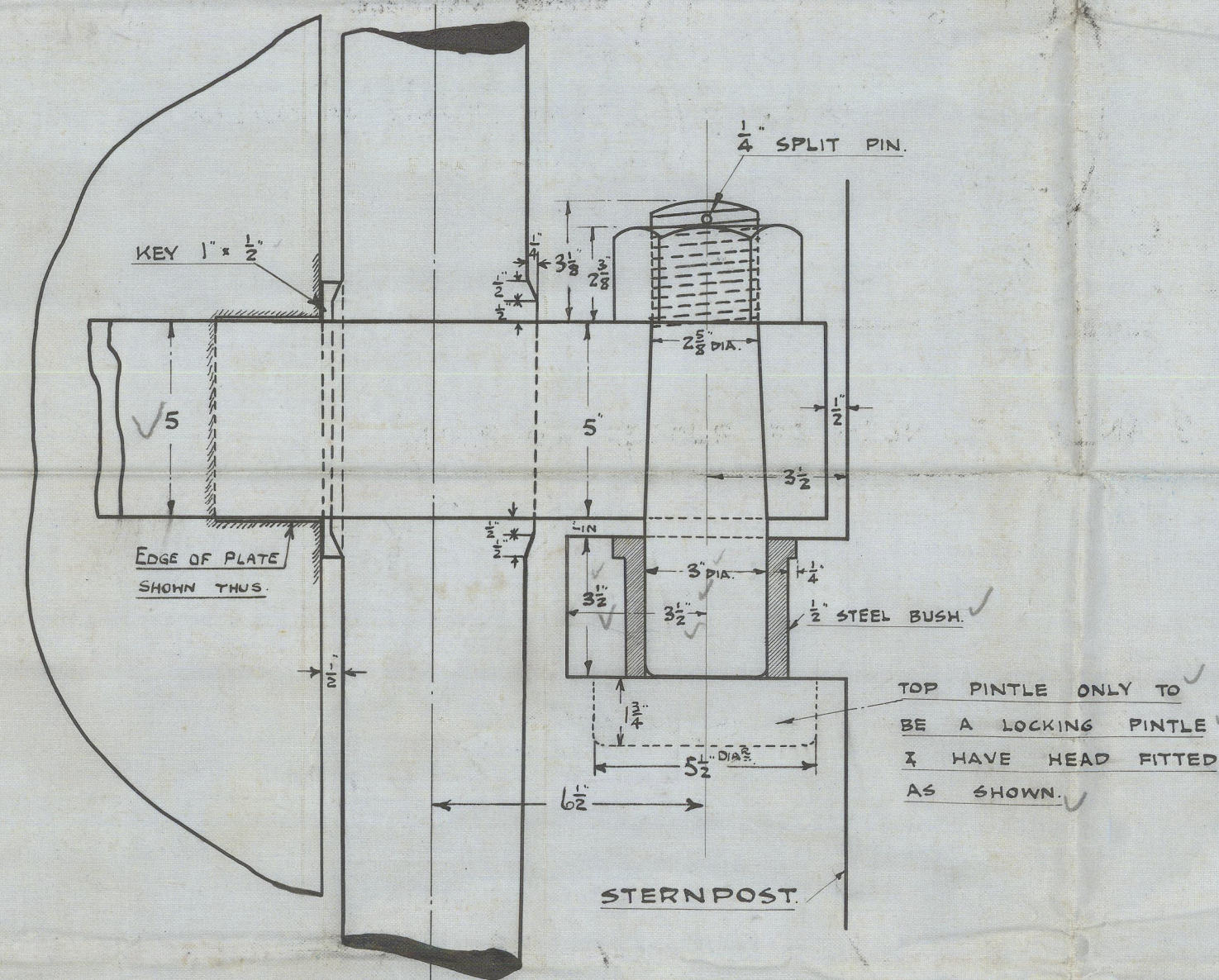


- A. TOTAL RUDDER AREA ABAFT LINE OF PINTLES. = 45 Sq Ft. ✓
D. DISTANCE OF CENTRE OF GRAVITY OF RUDDER ABAFT $\frac{1}{2}$ OF PINTLES. = 2.10 Ft. ✓
SPEED 10 KNOTS.
 $A \times D = 45 \times 2.10 = 94.5$ ✓

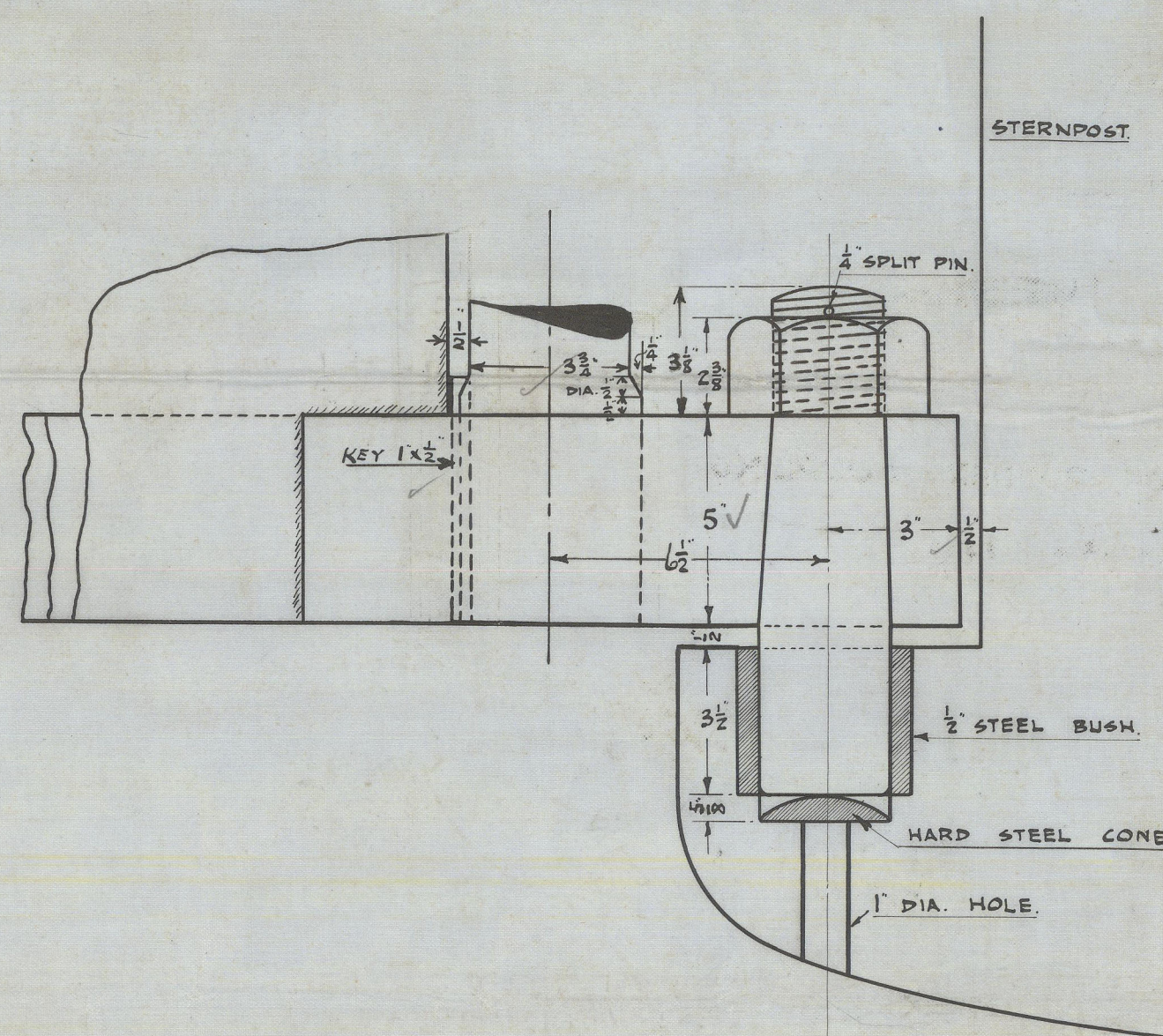
FORGINGS TO BE MADE OF SPECIALLY SOFT OPEN HEARTH INGOT STEEL. ✓



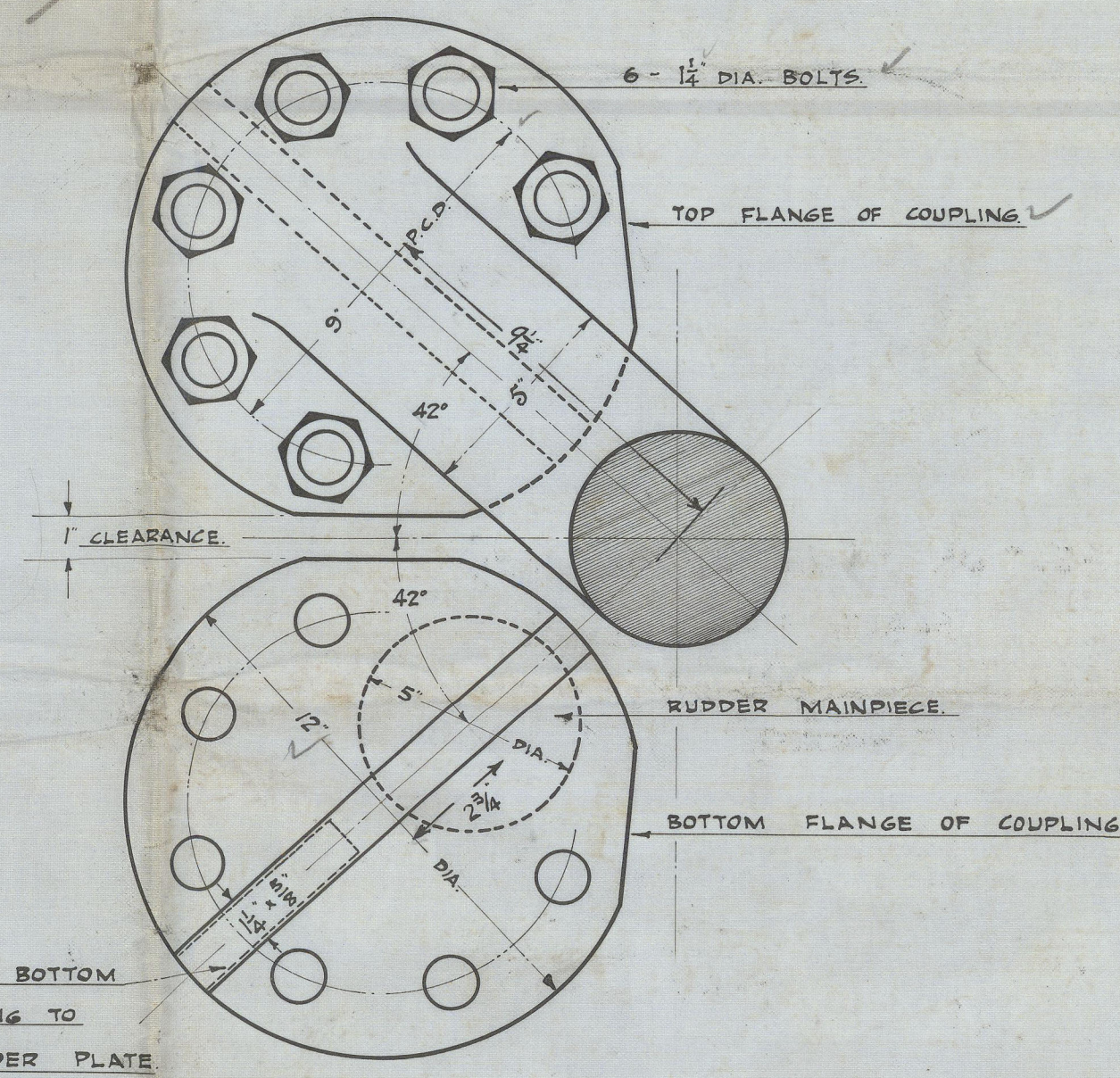
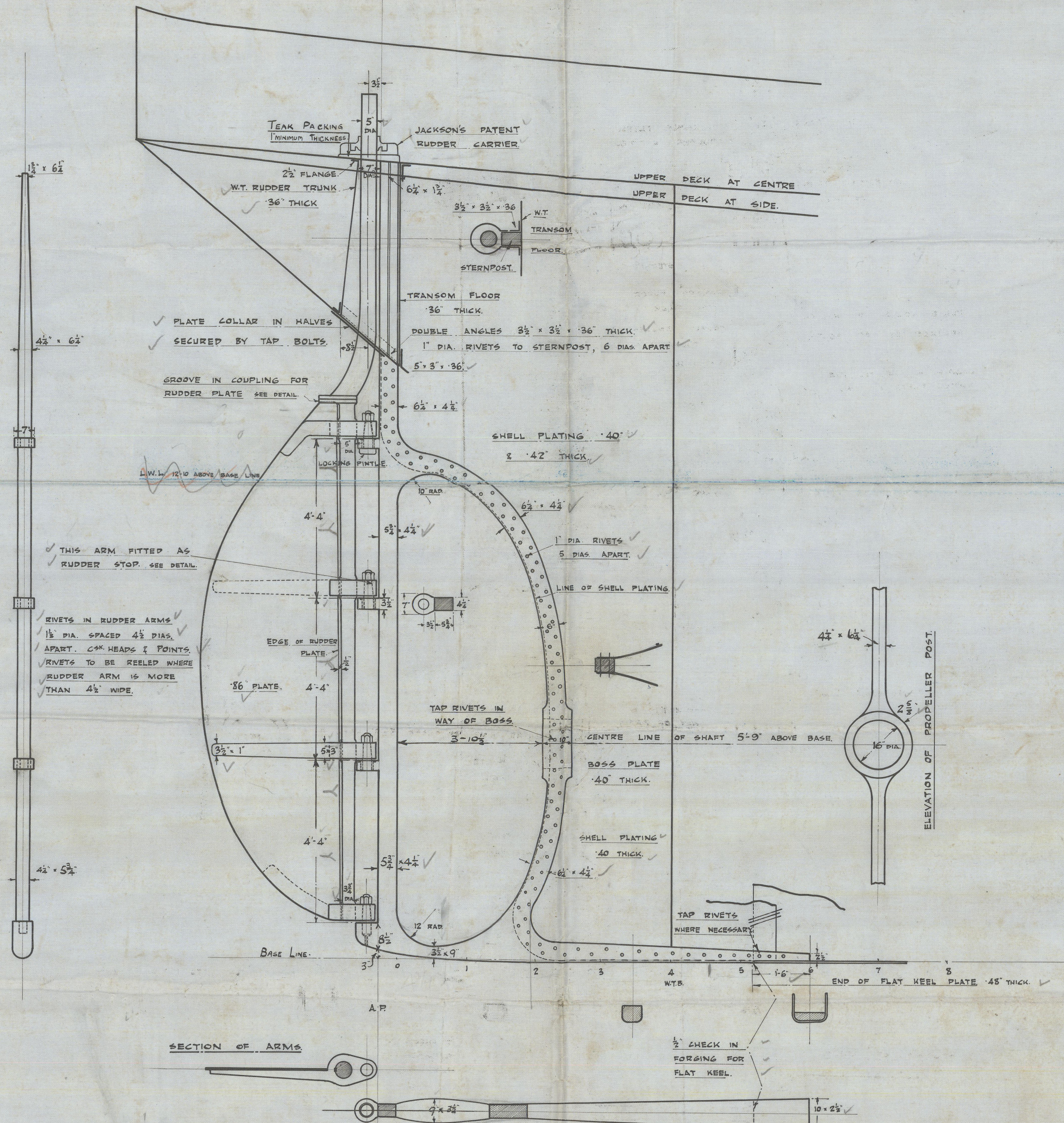
SECTION THRO' RUDDER ARM
SCALE 3" = 1 FOOT



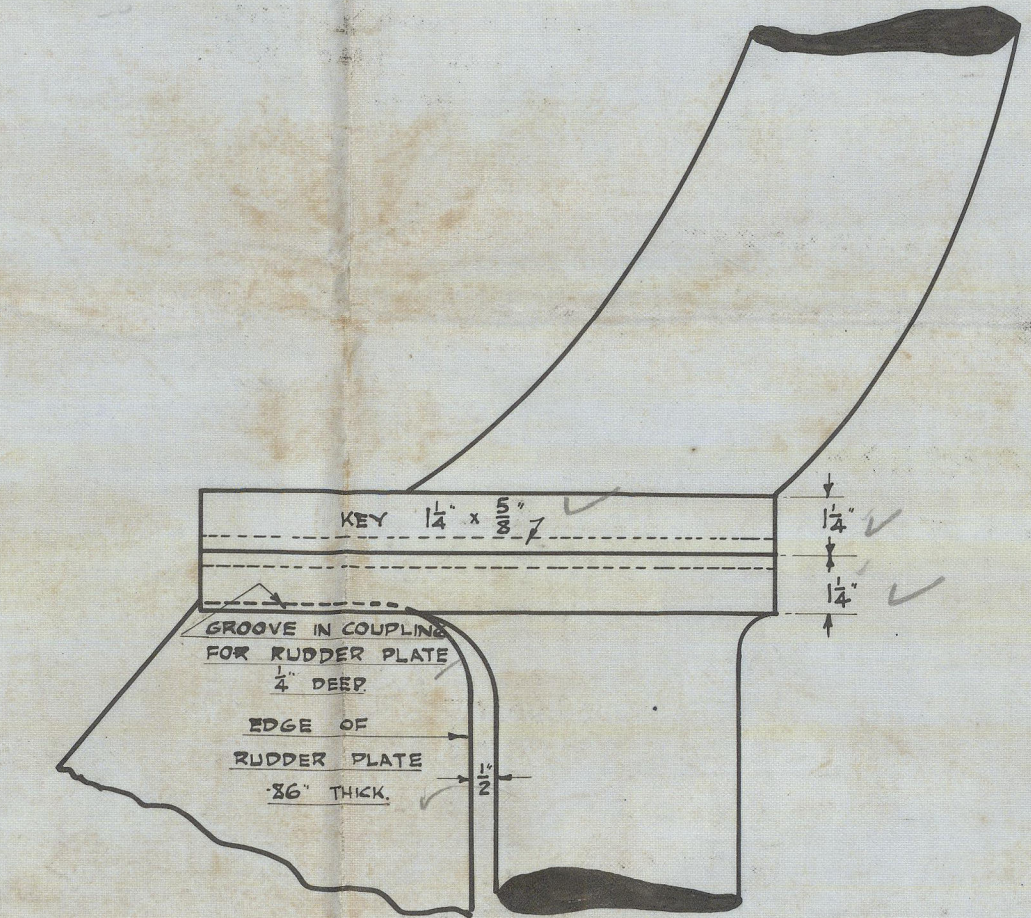
DETAIL OF PINTLES
SCALE 3" = 1 FT.



DETAIL OF BOTTOM PINTLE
SCALE 3" = 1 FT.



PLAN OF FLANGES OF RUDDER COUPLING
SHOWING CLEARANCE FOR SHIPPING & UNSHIPING
SCALE 3" = 1 FOOT



ELEVATION OF RUDDER COUPLING
SCALE 3" = 1 FOOT

Mrs. J. S. White Co.
East Cones. I. W.
Rudder & Stump Post
No. 1545-6-7

$\frac{3}{5}$ "Bilton"

Lon. 10681.

N. W. BILLY HALBER

© 2020

Lloyd's Register
Foundation

002515-002521-0026