

28 DEC 1943

Rpt. C. 11 (Contd.)

Index No.

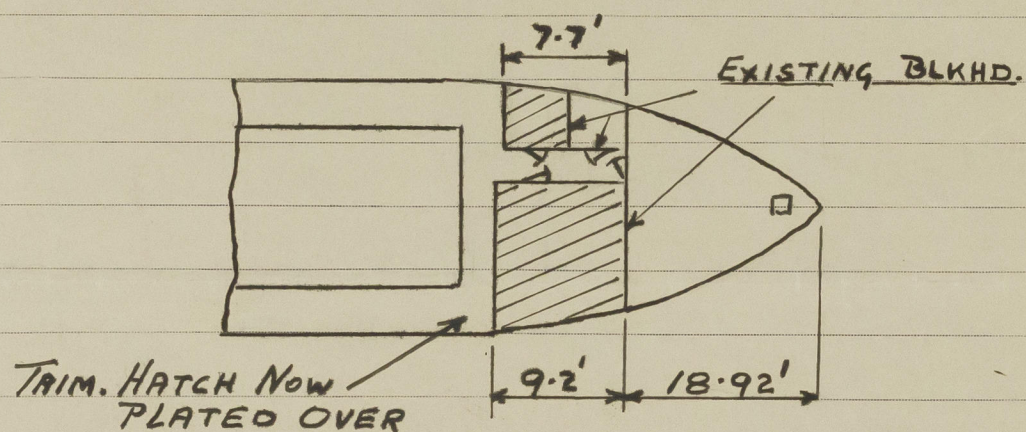
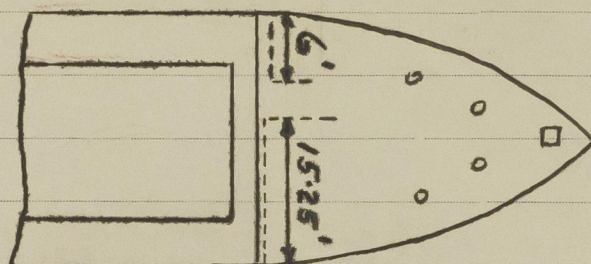
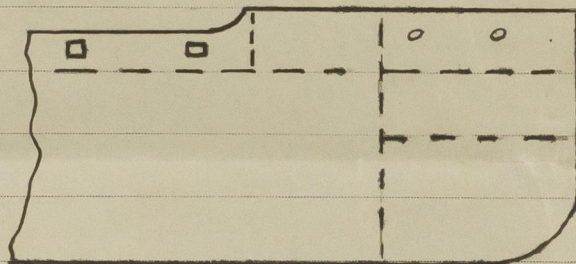
A. 675 (A)

Lloyd's Register of Shipping.

Ship's Name S.S. "ANNAGHMORE"

Official No. 140831

Memorandum of alterations reported since ship was surveyed for assignment of Load Lines
in _____



The fore-castle has been extended as shown by the shaded areas. Plating $\frac{5}{16}$ " thick with 3×3 " angle stiffeners spaced 32" apart. Openings are closed by hinged doors of steel or strong hardwood with sills 18" high.

John M'Ague