

7-5-12

MIDSHIP SECTION.

S. S. N° 241.

TO CLASS 100 A1.

DIMENSIONS 178'-6" x 28'-0" x 13'-0" M.L.D.

SCALE 1/2" = ONE FOOT.

SECTION IN WAY OF QUARTER DECK

EQUIPMENT NUMBER 8131-3

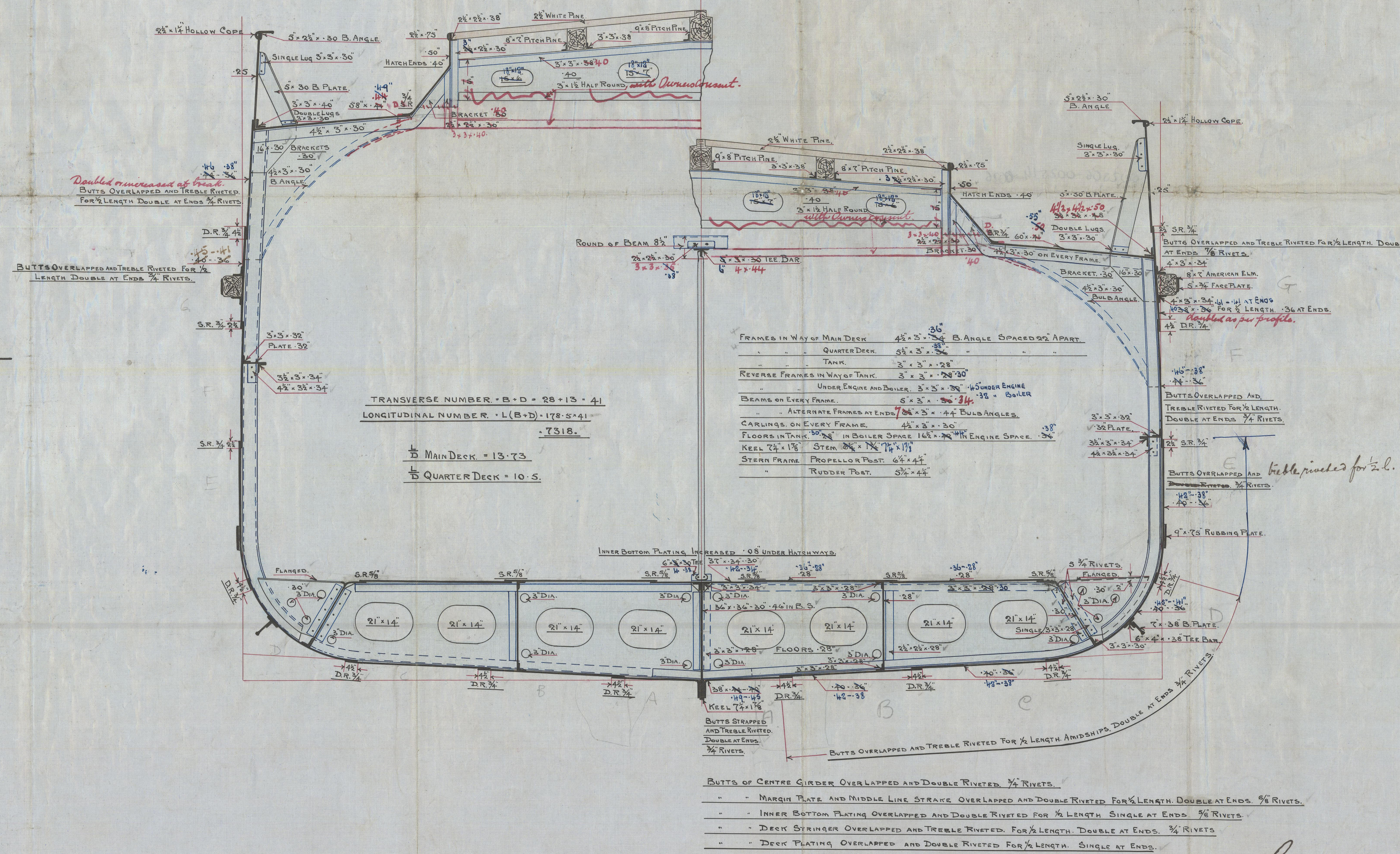
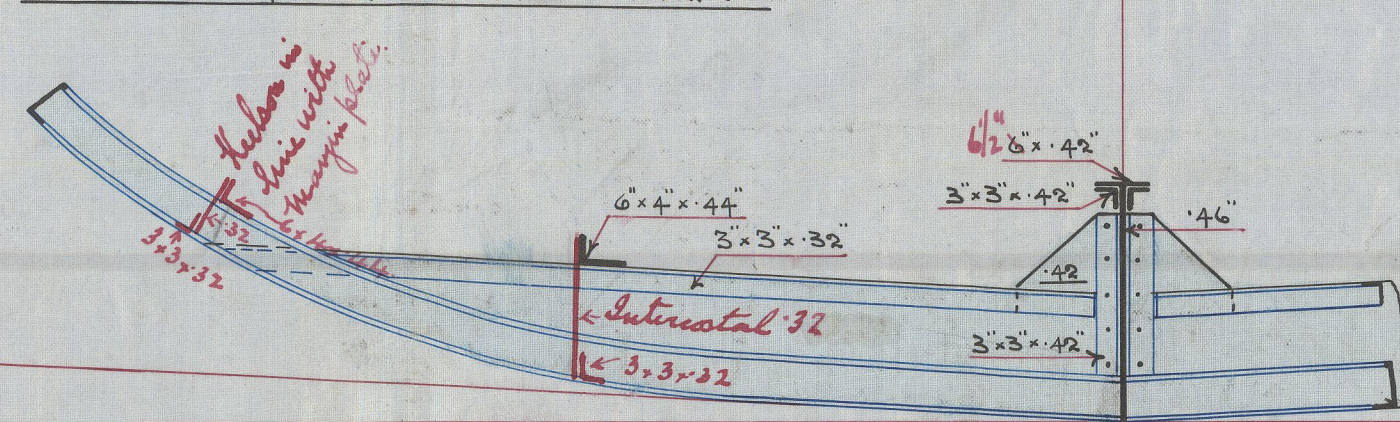
2 BOWER ANCHORS	16 3/4" CWT STOCKLESS
1 STREAM ANCHOR	14 3/4" EX STOCK
1 KEDGE ANCHOR	2 3/4" "
106 FATHOMS	1 1/2" 1 3/4" STUD CHAIN CABLE
60	5" STEEL WIRE
75	8 1/2" HEMP OR 2 3/4" STEEL WIRE
90	6" HAWSEER 2 1/4" Chalk wire
90	4" WARR 2" "

Notes: 1. 16 3/4" CWT Stockless not used 8100
2. 2 1/4" Chalk wire Request.

SECTION IN WAY OF MAIN DECK

SECTION IN WAY OF BOILER SPACE

FRAMES 3 1/2" x 3 1/2" B. ANGLE SPACED 22" APART.
 REVERSE FRAME 3 1/2" x 3 1/2" DOUBLE.
 FLOORS 1 1/2" x 1 1/2" PARALLEL TO RISE OF FLOOR LINE.



- BUTTS OF CENTRE GIRDER OVERLAPPED AND DOUBLE RIVETED. 3/4" RIVETS.
- " " MARGIN PLATE AND MIDDLE LINE STRAKE OVERLAPPED AND DOUBLE RIVETED FOR 1/2" LENGTH. DOUBLE AT ENDS. 3/4" RIVETS.
- " " INNER BOTTOM PLATING OVERLAPPED AND DOUBLE RIVETED FOR 1/2" LENGTH. SINGLE AT ENDS. 3/4" RIVETS.
- " " DECK STRINGER OVERLAPPED AND TREBLE RIVETED FOR 1/2" LENGTH. DOUBLE AT ENDS. 3/4" RIVETS.
- " " DECK PLATING OVERLAPPED AND DOUBLE RIVETED FOR 1/2" LENGTH. SINGLE AT ENDS.

C.B.
 7-5-12

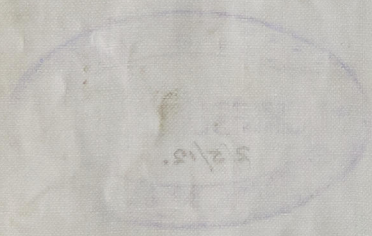
MIDSHIP

S.S. No 241.

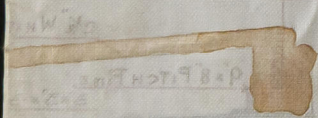
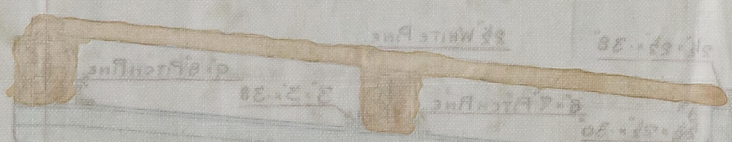
TO CLASS 100 A.I.

DIMENSIONS 178-6 x 28-0

SCALE 1/4" = ONE FOOT



QUARTER DECK



178-6
28-0

STAYING 22

STAYING 22

STAYING 22

STAYING 22

STAYING 22

STAYING 22

STAYING 22

STAYING 22

STAYING 22

10.533

2.5
1.5
1.2
2.5
3.7
11.2



© 2020

Lloyd's Register
Foundation

Scott Ross
W-741
Midship Section
"Carnalea"

N.N. Ballydugan.

.NOI

GLASGOW REPORT No. 32.255

.M O



NUMBER 8131-3
5007-9

SECTION IN WAY OF MAIN DECK.

STEEL CHAIN CABLE

STEEL WIRE

STEEL WIRE

STEEL WIRE

STEEL WIRE

STEEL WIRE

DE-1812
31211A-1

DE-1812
31211A-1

002506-002514-0026



© 2020

Lloyd's Register
Foundation