

Nº 1243.

# RUDDER FRAME

SCALE  $\frac{1}{2}'' = 1 \text{ FOOT}$


FORGED STEEL TO PASS LLOYDS TESTS.

C<sup>B</sup> GRAY. AFT OF C<sup>B</sup> OF PINTLES 2.29 FT

AREA = 56.02  $\frac{1}{4}$  A \* D = 128.28

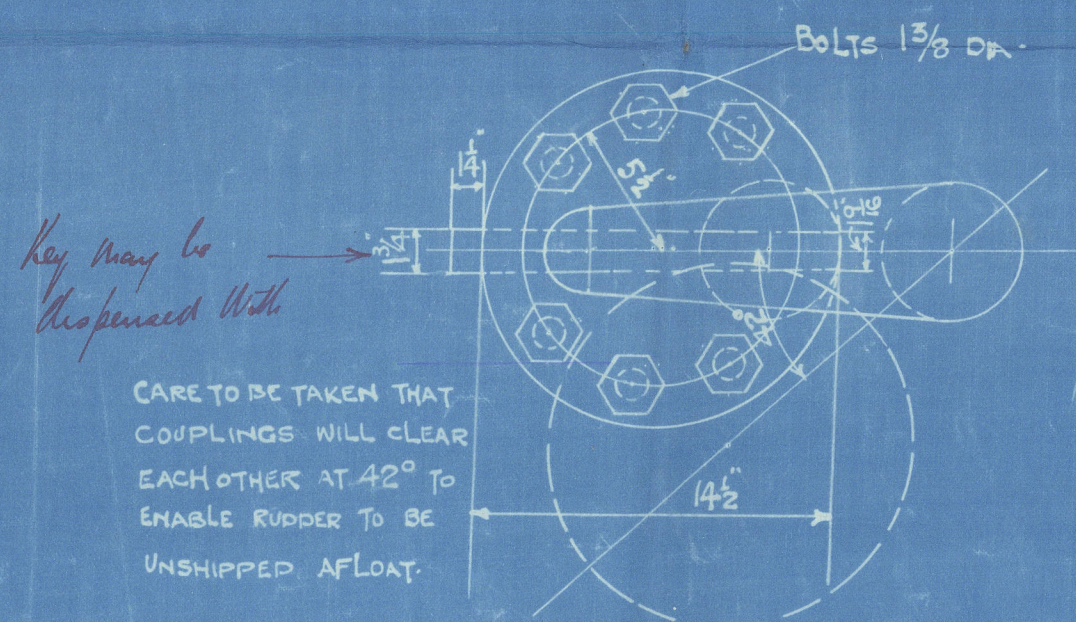
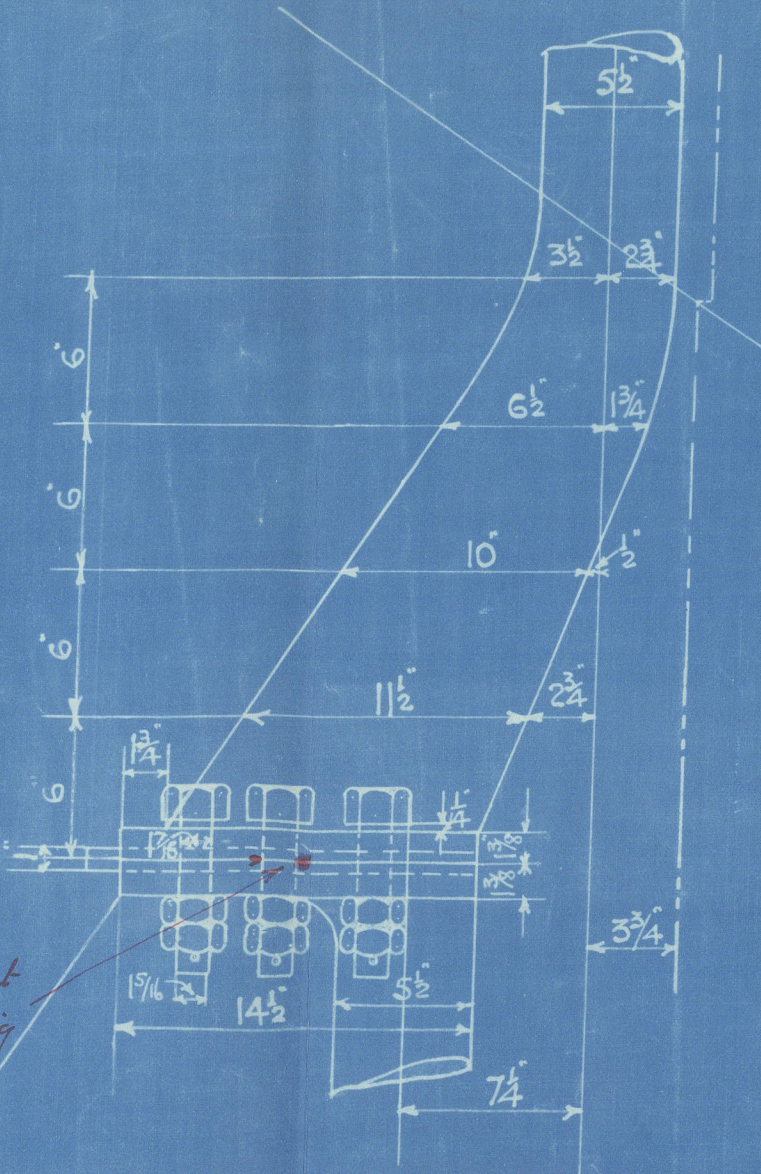
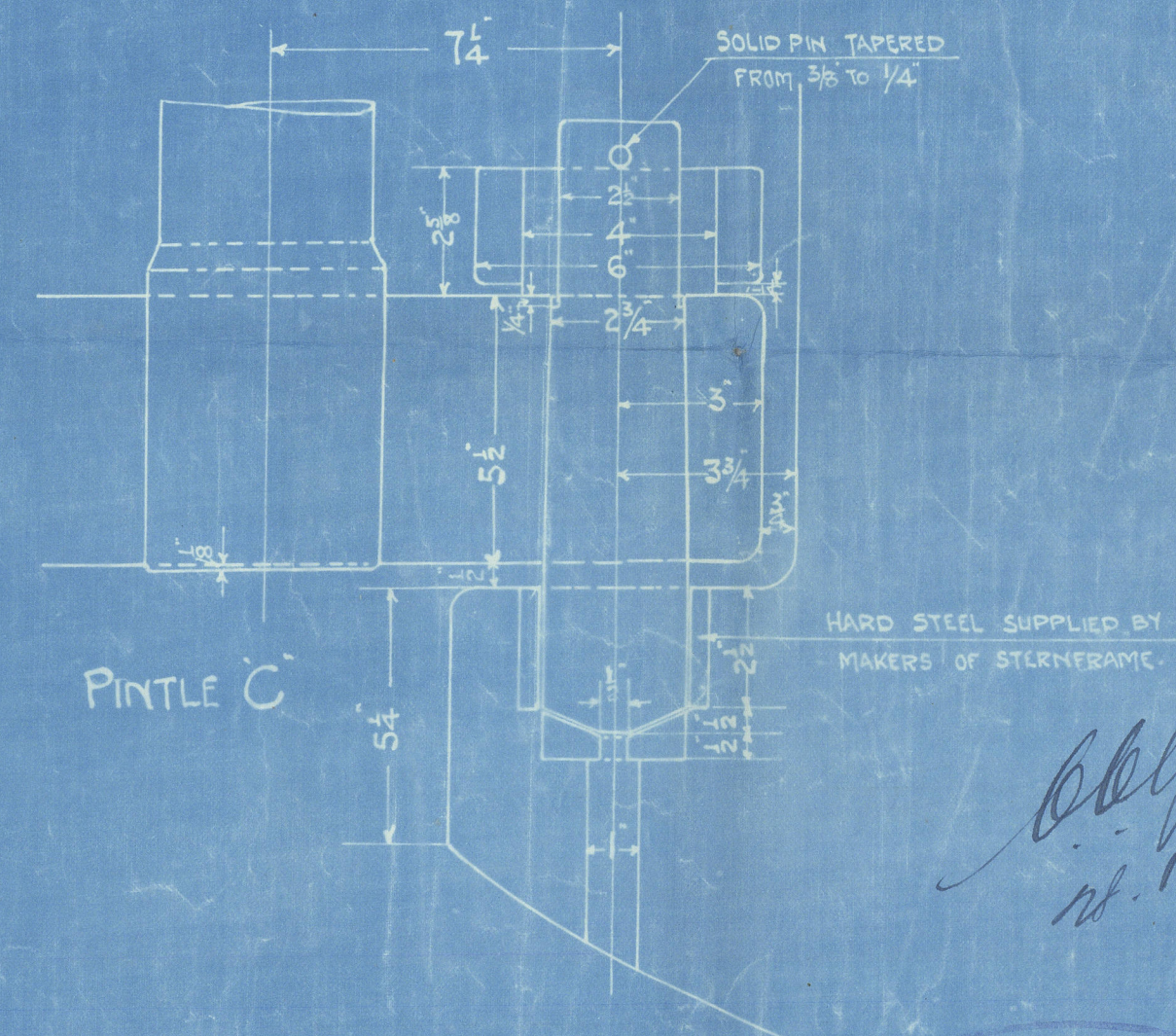
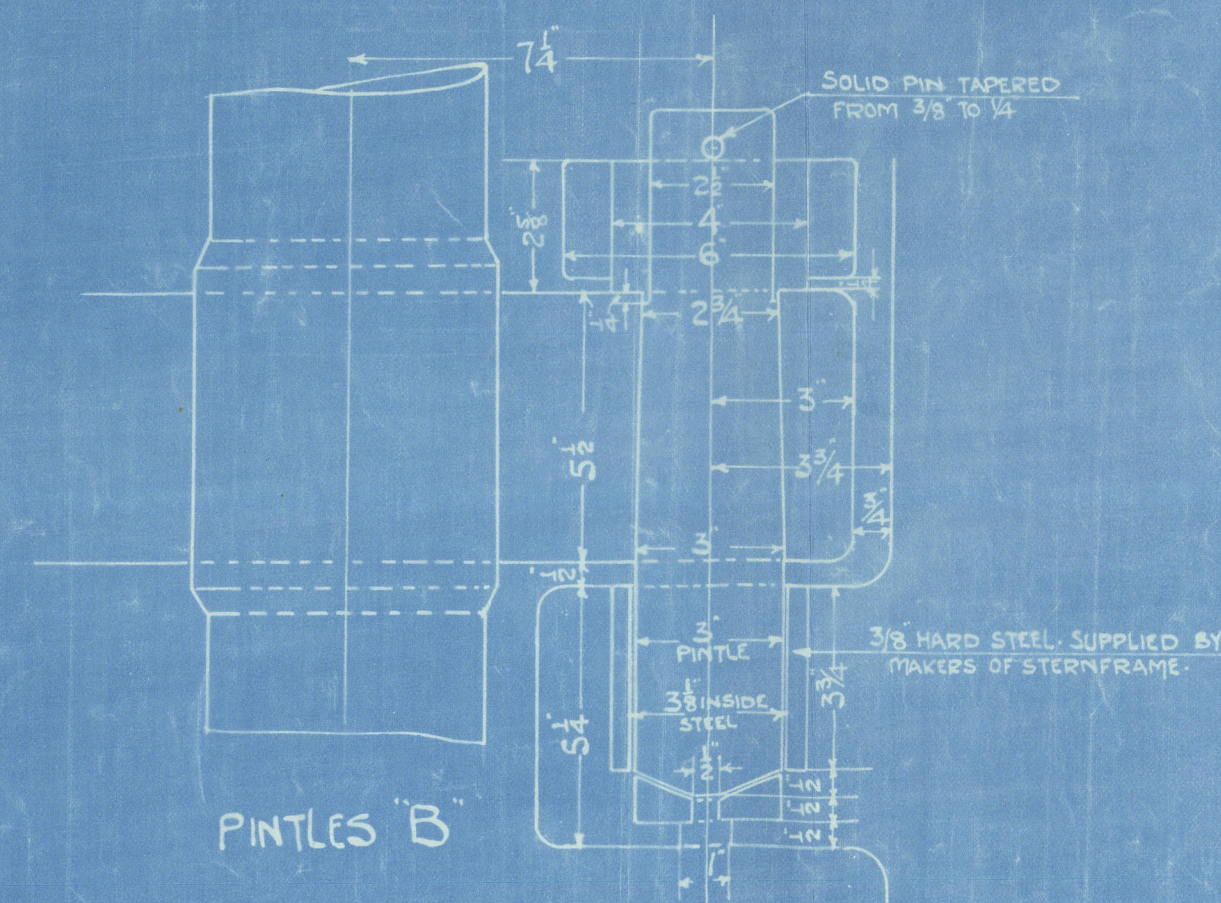
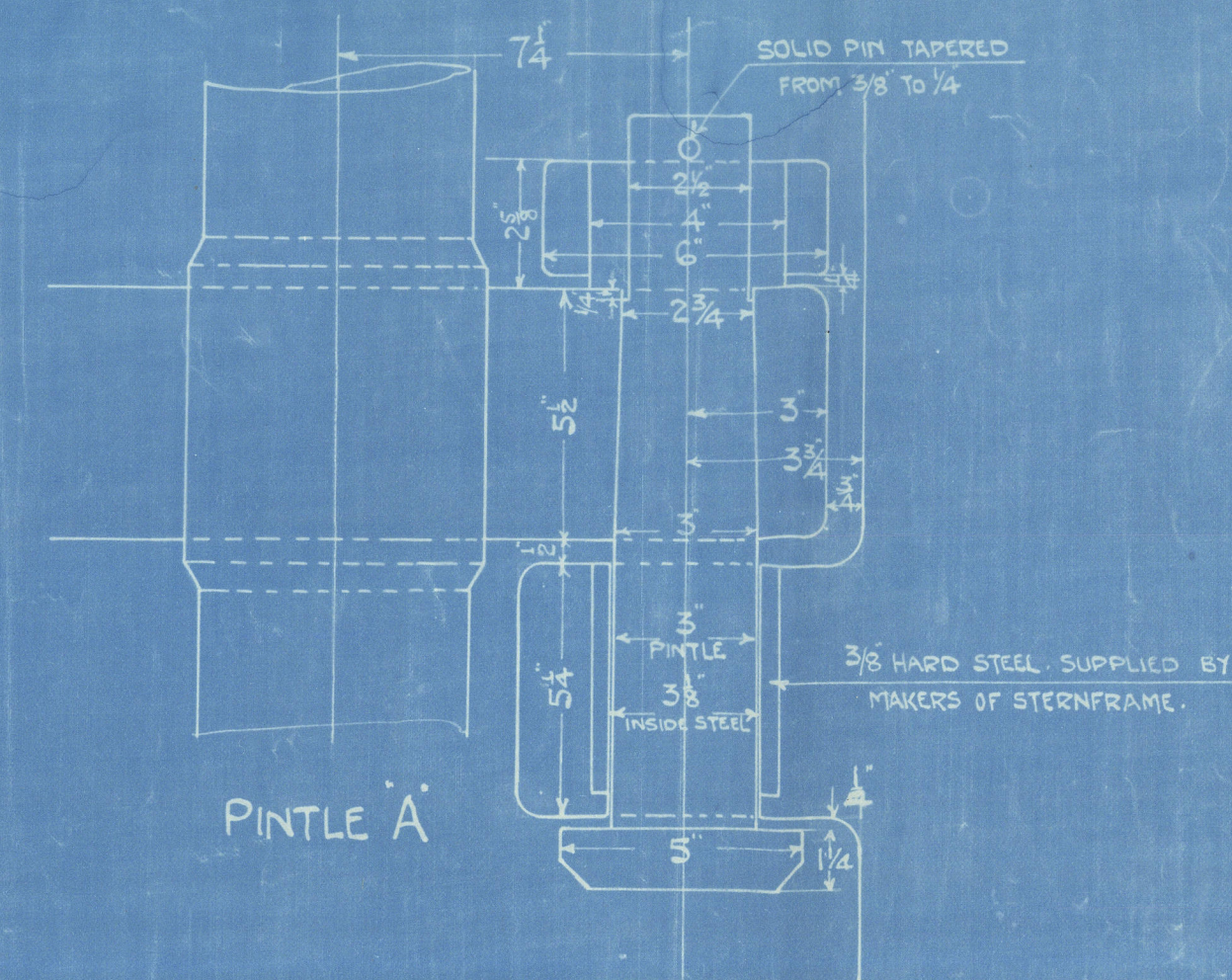
SPEED 10 KNOTS

## NOTES

THE EXACT POSITION OF GUDGEONS TO BE CAREFULLY TEMPLATED FROM STERNFRAME CARE TO BE TAKEN THAT RUDDER IS MADE TO DIMENSIONS SHOWN ON PLAN AS WE ONLY PAY ON WEIGHTS CALCULATED TO THESE DIMENSIONS.  
CORRECT LENGTH OF TOP PINTLE TO BE MEASURED WHEN RUDDER IS COMPLETE & HEAD IS TO BE  $\frac{1}{4}$  CLEAR OF GUDGEON.  
MAIN POST TO BE TURNED, ARMS SHRUNK & KEYS ON.  
CENTRE LINE OF PINTLES TO BE IN A PERFECTLY STRAIGHT LINE WITH CENTRE LINE OF STOCK.  
RUDDER STOCK INCREASED  $10\frac{1}{2}$  IN DIAMETER & TURNED PARALLEL IN WAY OF ARMS. THE INCREASE TO BE UNIFORM ALL ROUND MAINPIECE & TO EXTEND ABOVE & BELOW EACH ARM FOR A DISTANCE EQUAL TO INCREASE IN DIAMETER & THEN TAPERED OVER A SIMILAR DISTANCE INTO NORMAL DIAMETER OF MAINPIECE.  
COUPLING BOLTS  $1\frac{1}{2}$  DIA. TAPERED TO  $1\frac{1}{8}$  DIA.  $1\frac{1}{8}$  DIA. AT FACE OF COUPLING.  
THREADS OF COUPLING BOLTS TO BE HAVE SHAPED THUS  CHECKNUTS TO BE FITTED WITH TAPERED PINS.  
BOLT HEADS TO BE  $\frac{1}{4}$  CLEAR OF COUPLING WHEN SCREWED UP.  
KEY  $1\frac{1}{2} \times 1\frac{3}{4}$  TAPERED TO  $1 \times 1\frac{1}{8}$  & TO BE  $\frac{1}{2}$  LONGER THAN COUPLING WITH SQUARE END FOR DRIVING UP. ALSO A STRAP TO BE FITTED OVER AFTER END OF KEY TAPPED TO FLANGES TO KEEP KEY IN POSITION. STRAP SUPPLIED BY SHIPBUILDERS.  
SPECIAL CARE TO BE TAKEN TO ARRANGE COUPLING BOLTS SO THAT CHECKNUTS MAY BE TIGHTENED UP WITHOUT FOULING RUDDER STOCK.  
KEY TO DRIVE UP TIGHT FROM AFTER END WHEN COUPLING IS BOLTED UP.

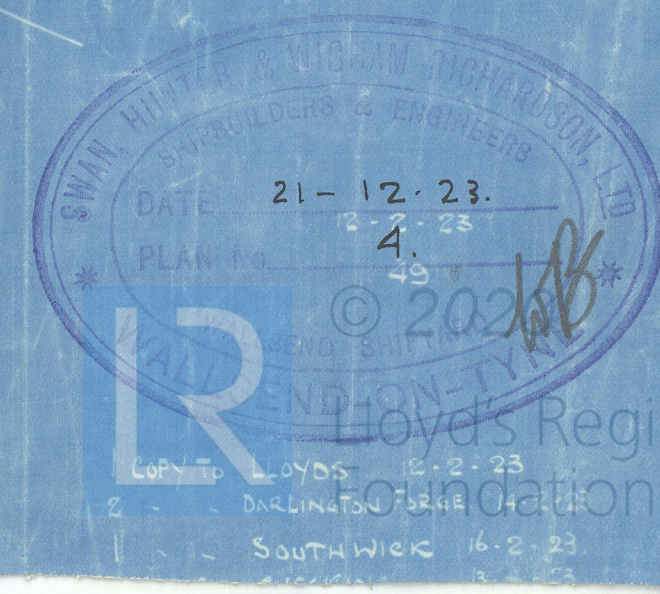
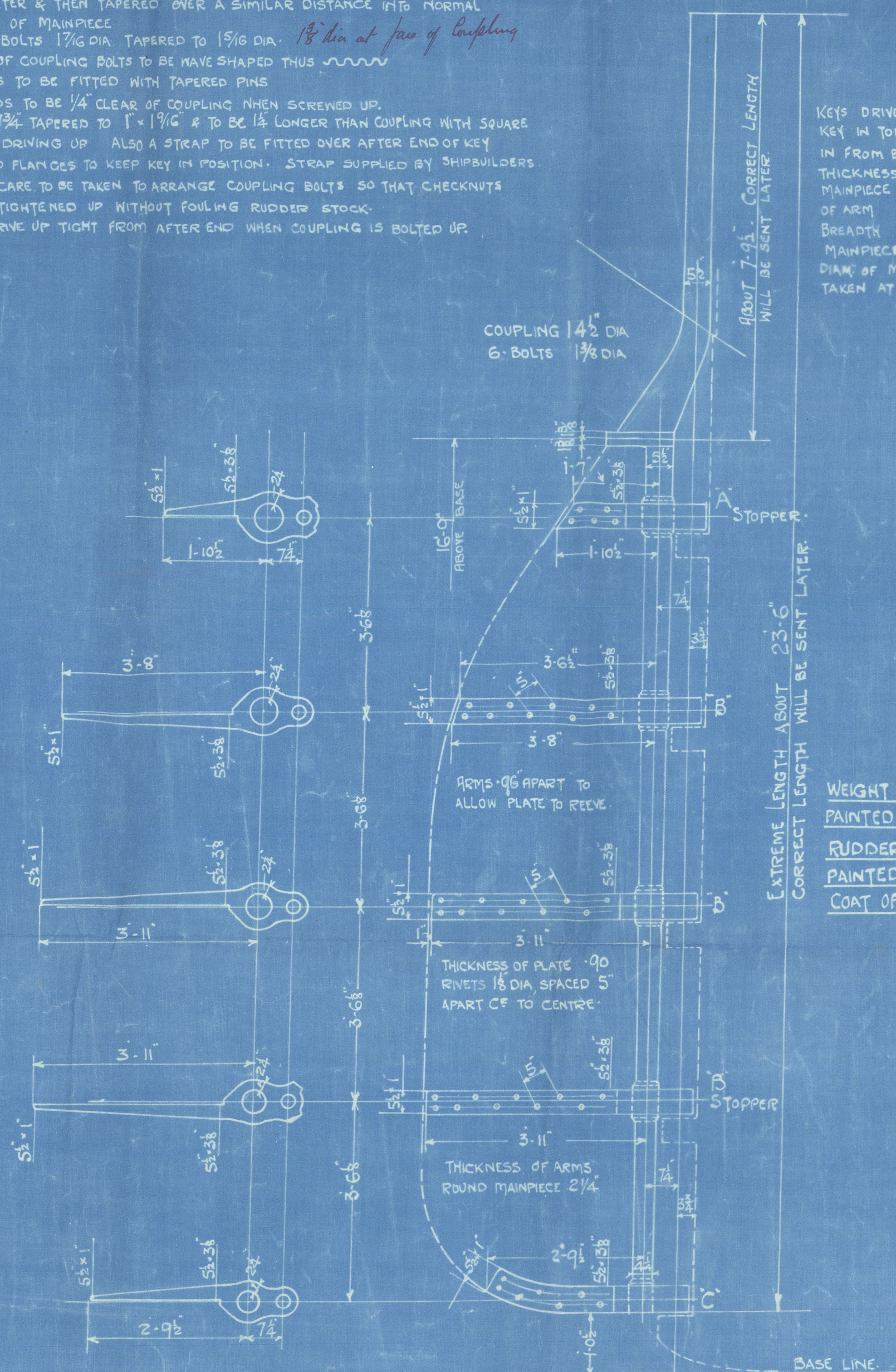
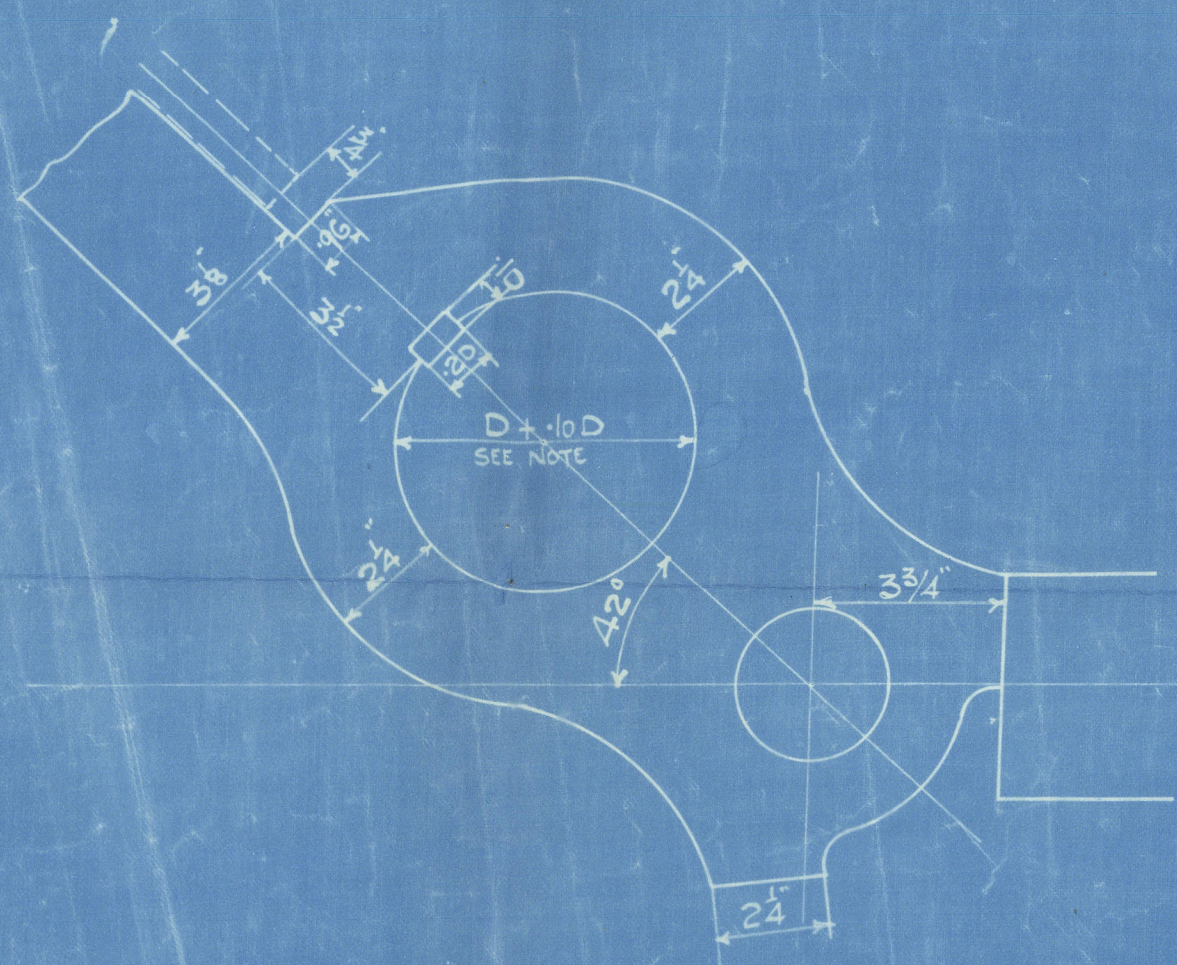
GAUGES OF DIA. OF RUDDER HEAD TO WHICH STOCK MUST BE TURNED ALSO PARTICULARS OF KEYWAYS WILL BE SENT LATER

## DETAILS OF PINTLES SCALE $3'' = 1 \text{ FT}$



## DETAIL OF COUPLING

SCALE  $\frac{1}{2}'' = 1 \text{ FOOT}$



002498-002505-0092



Sunderland

Swan Hunter Wigham Richardson

N<sup>o</sup> 1243

Rudder

"N/N BELVINA"  
S.S. JAMES DUNFORD

SUNDERLAND PPT. NO. 2889 D

002498 - 002505 - 0092



© 2020

Lloyd's Register  
Foundation