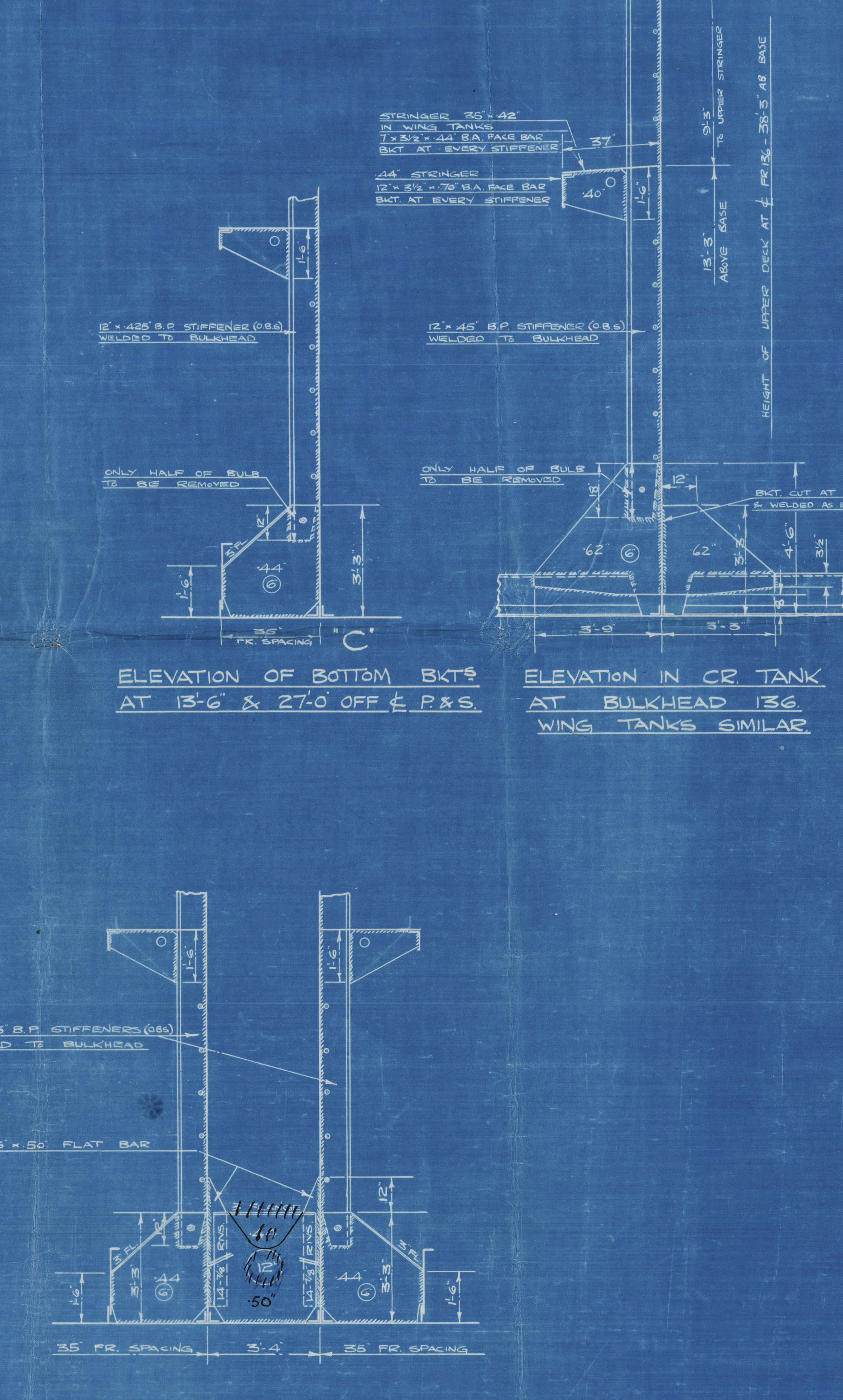
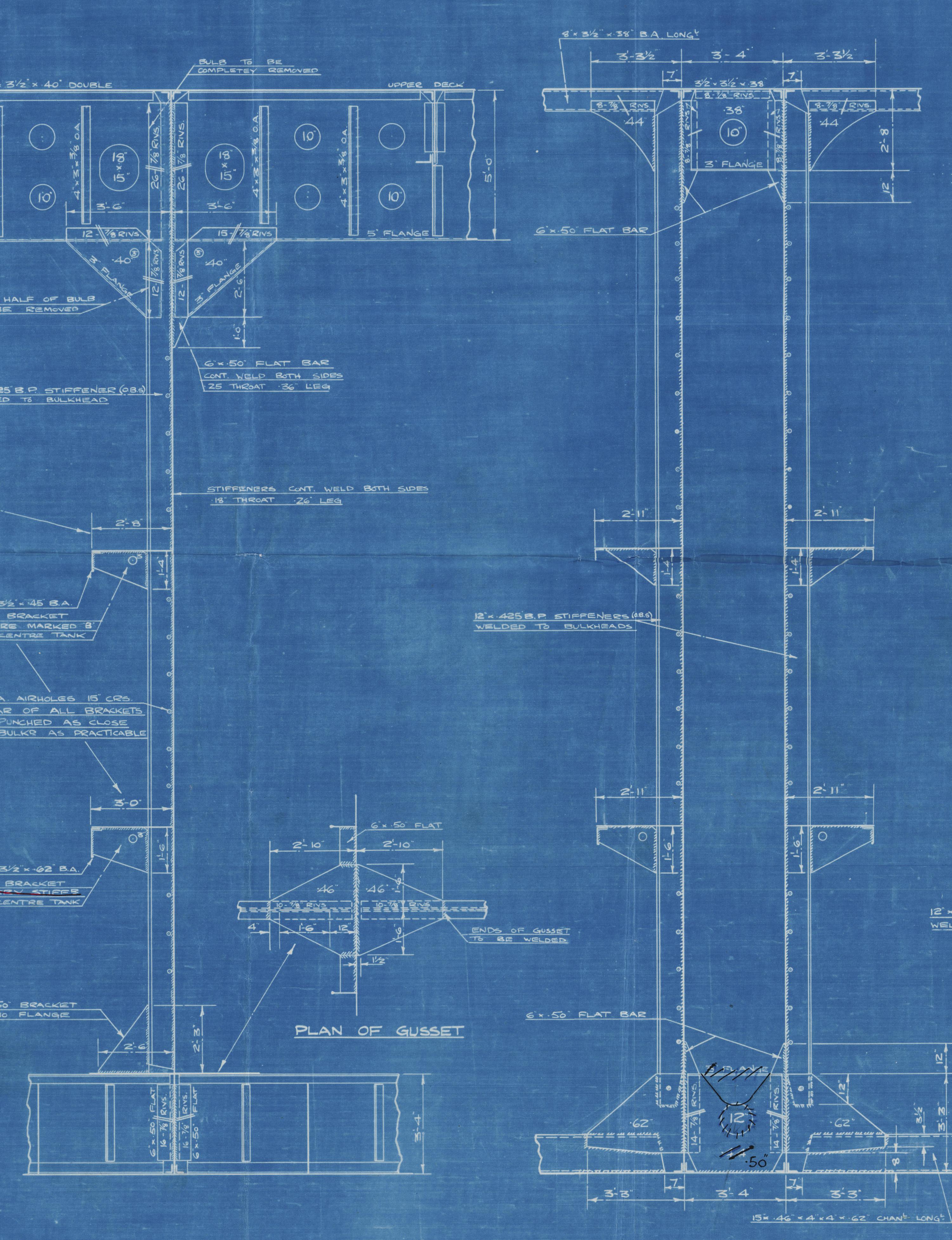
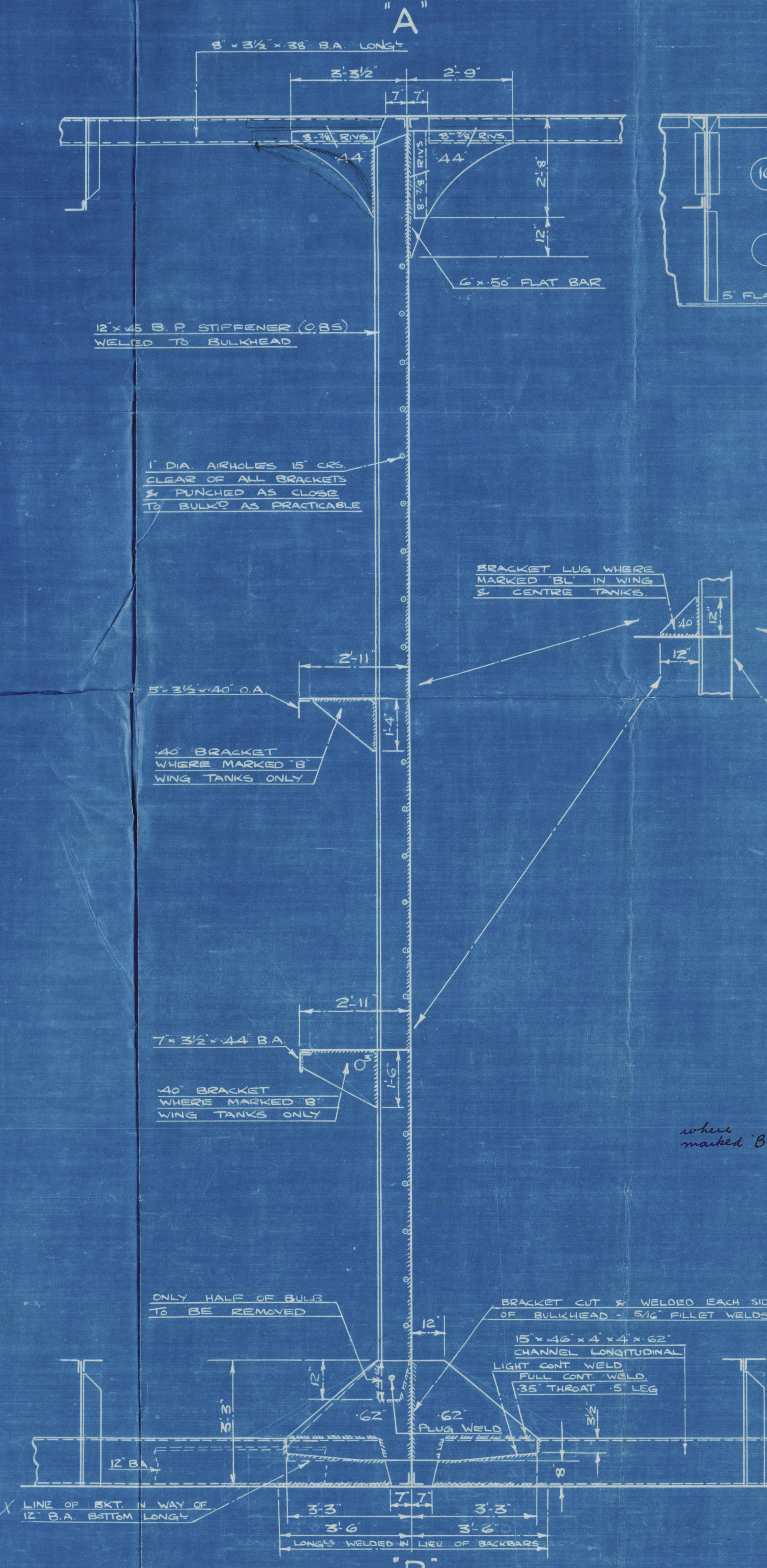
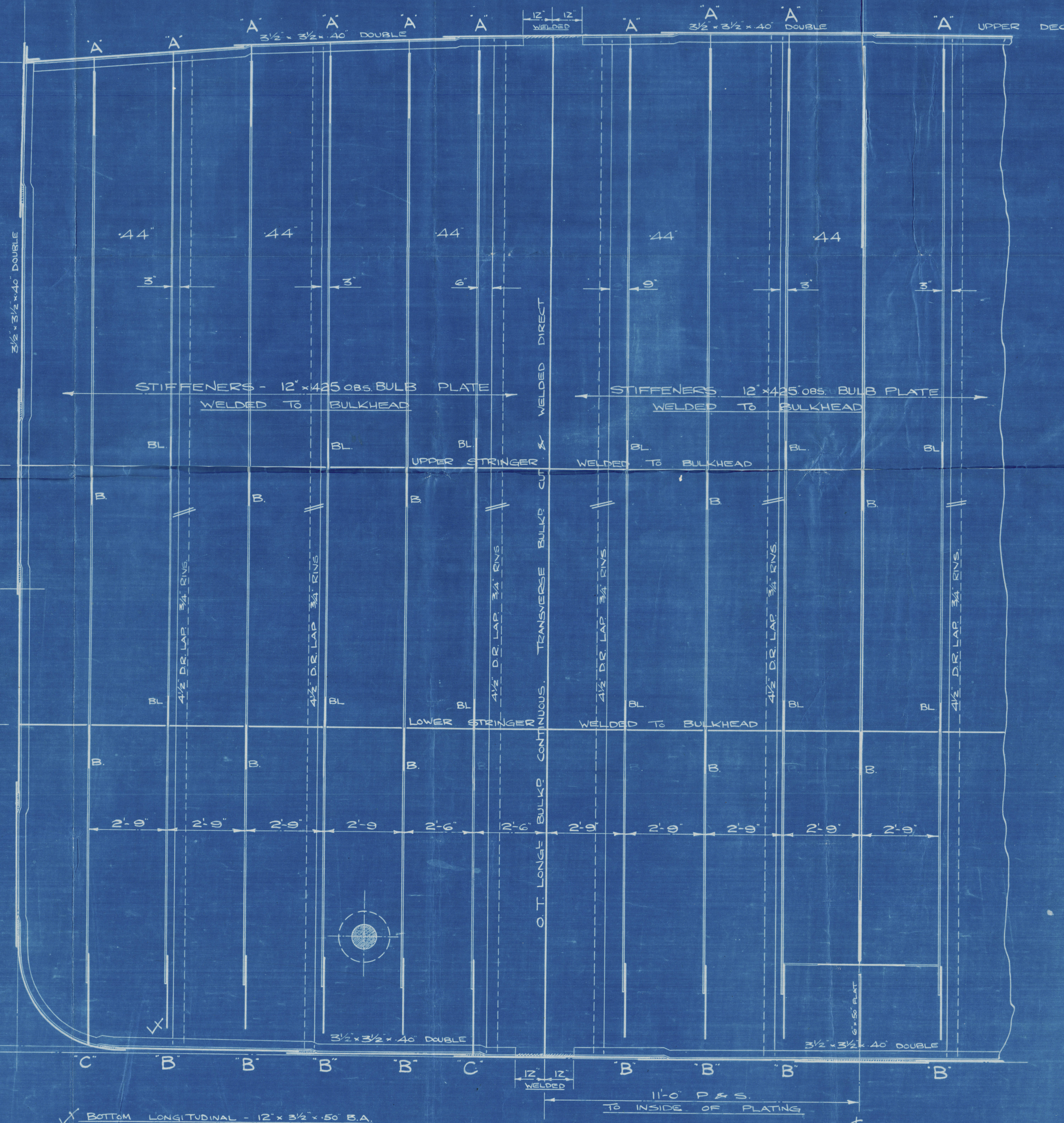
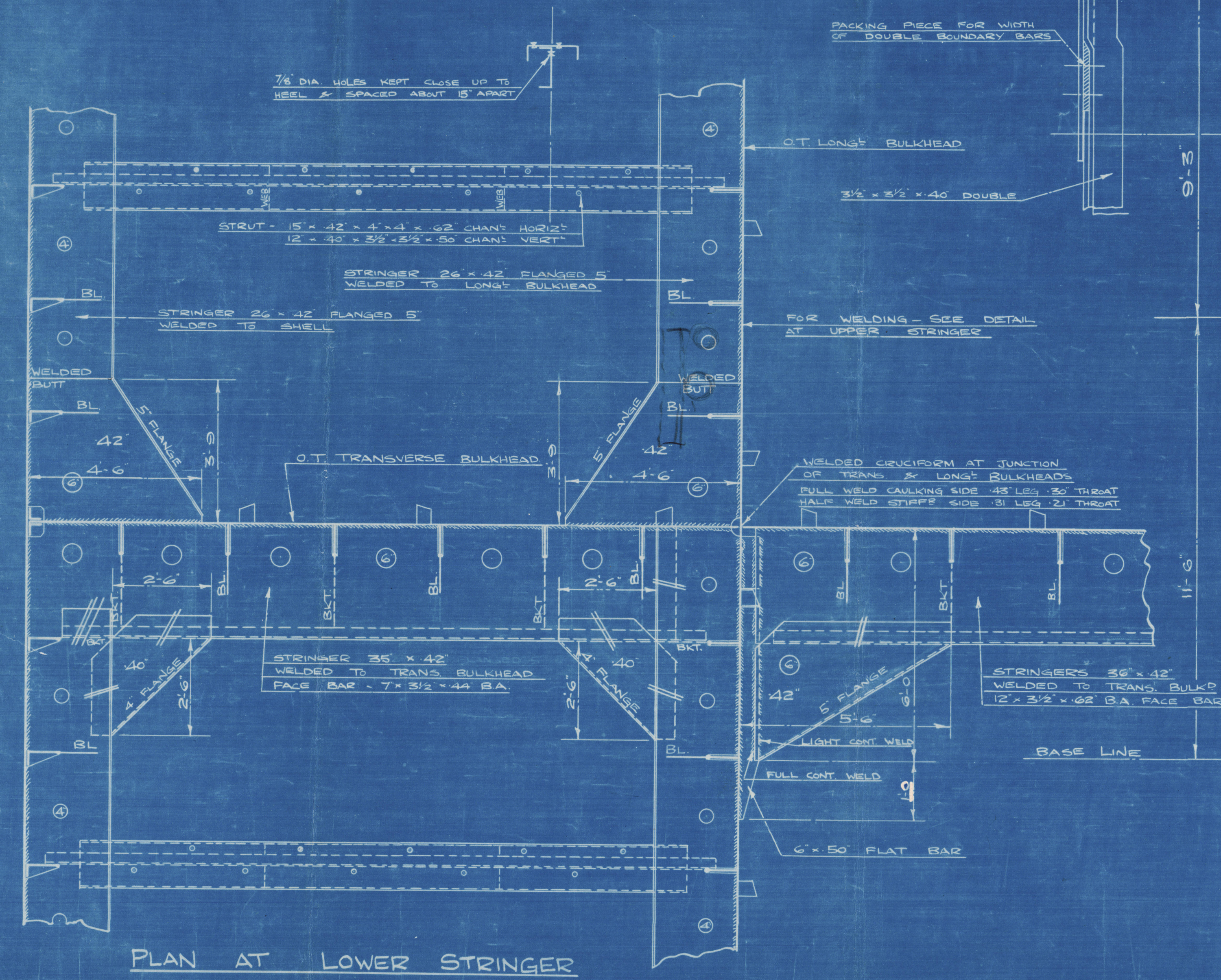
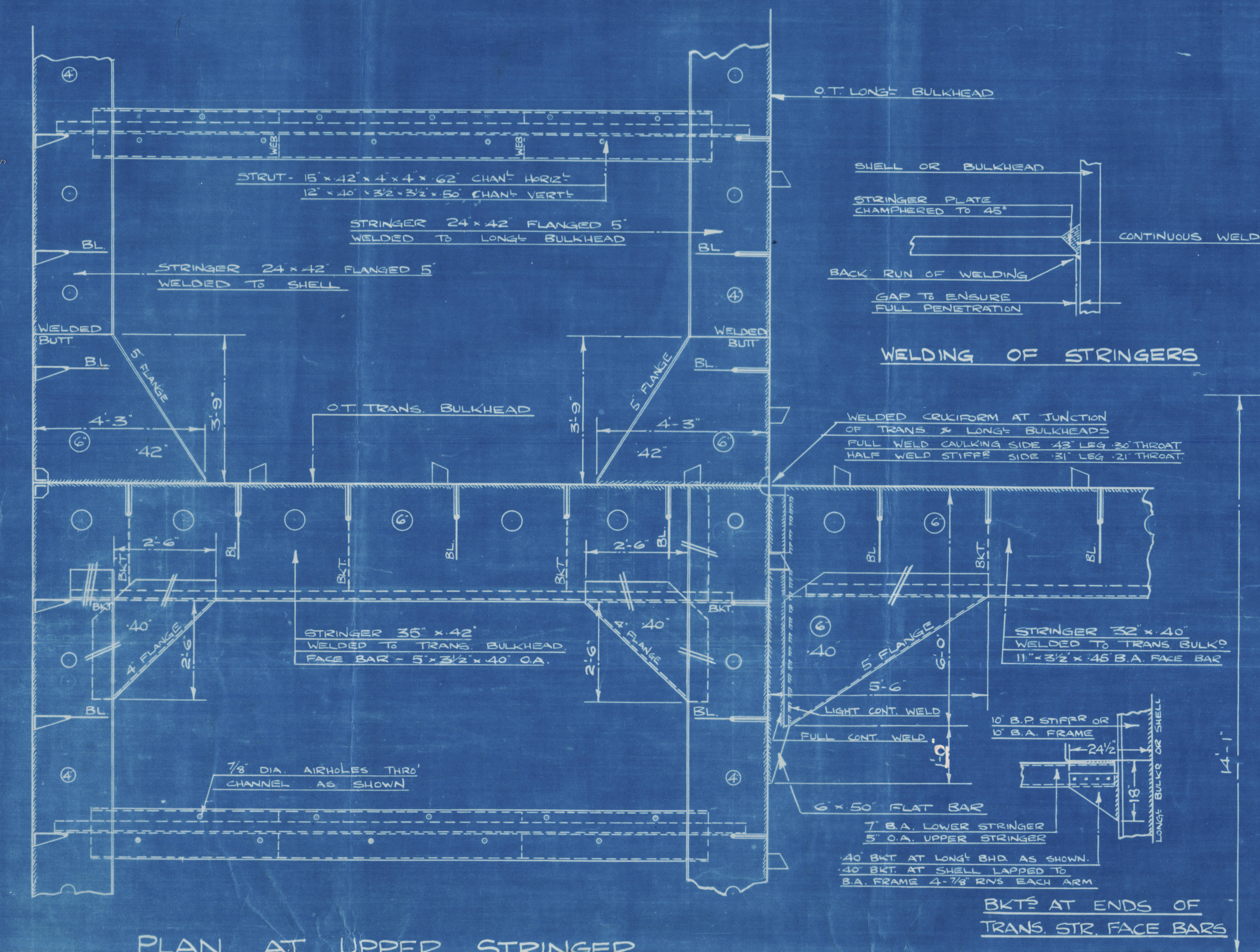


# NOS 11969 TYPICAL O.T. TRANSVERSE BULKHEAD.

SCALE:- 1/2" = 1 FOOT.  
DIMENSIONS 460'-0" B.P. x 59'-0" x 34'-0" MLD

11969 TO CLASS LLOYDS 100 A.I. \* "CARRYING PETROLEUM IN BULK"  
11974 TO CLASS S.S. \* (TANK OIL CARRIER)  
LONGITUDINAL FRAMING AT BOTTOM & AT DECK.

ALL BULB ANGLES ARE N.B.S.  
PLATES O.B.S.





*[Red and blue scribbles]*


HARLAND & WOLFF L<sup>TD</sup>

N<sup>o</sup> 11969.

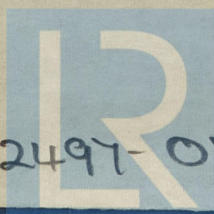
TYPICAL TRANSVERSE D.T. BH<sup>DS</sup>

⑧

1196 GLASGOW REPORT No. 69699

British Hughie 

24  
46 - 7 ✓  
57  
-----  
127 - 7.



© 2020

002490-002497-0121 Lloyd's Register  
Foundation