

DEC 31 1938

Index No. 35873
(For London Office only).

Lloyd's Register of Shipping.

SURVEYS FOR FREEBOARD.

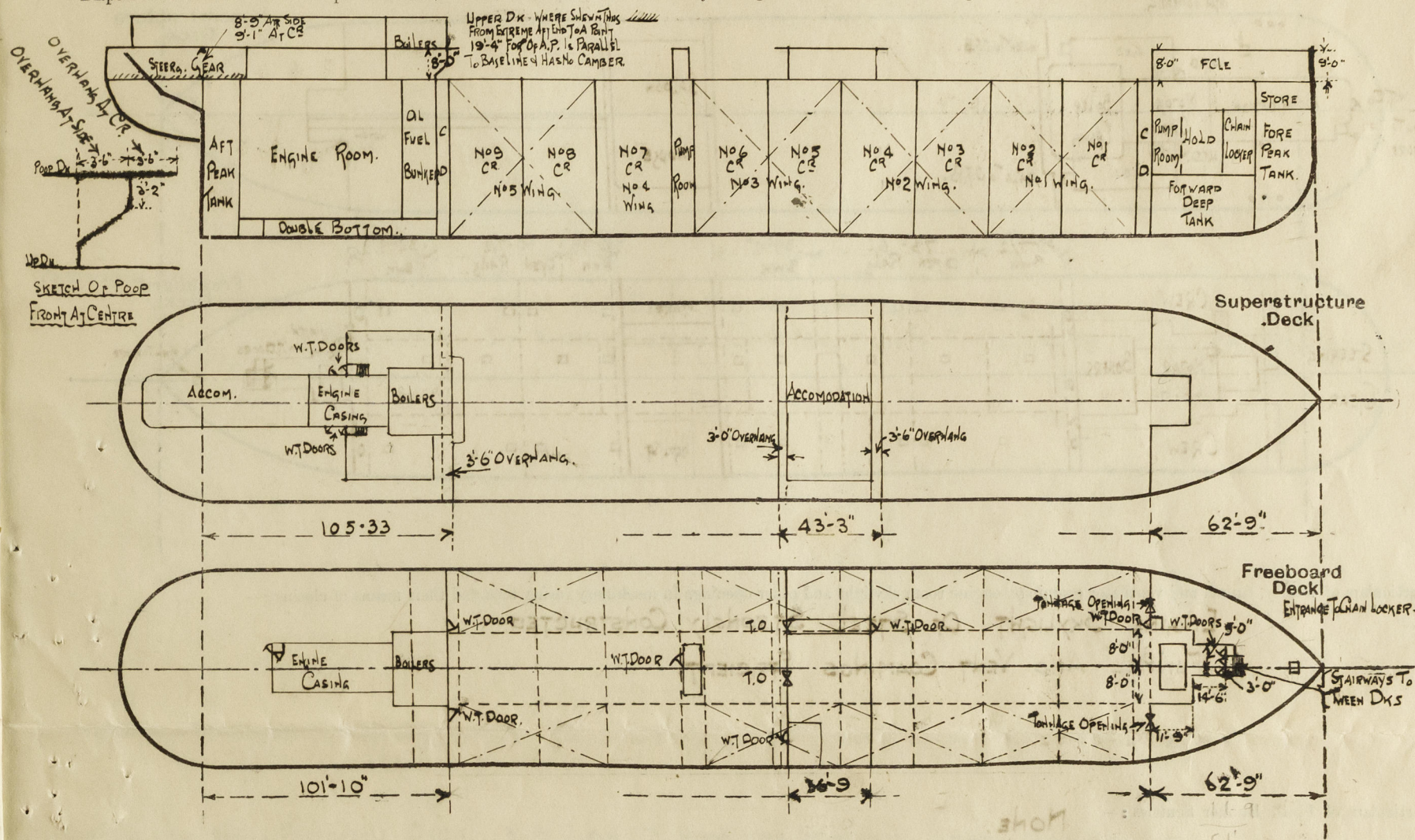
(CONDITIONS OF ASSIGNMENT.)

GRK. REPORT N° 20646.

Ship's Name **BRITISH UNITY.**
 Official Number **167215**
 Nationality and Port of Registry **BRITISH, LONDON.**

Port of Survey **GREENOCK.**
 Surveyor's Signature **Kenneth Inglis**
 Date of Survey **WHILE BUILDING.**

Disposition and dimensions of superstructures, trunks, deckhouses and machinery casings to be inserted in the diagrams and tabular statement:—



Particulars of Superstructures, Trunks, Casings, Deckhouses.

	Coaming	Plating	Stiffeners	Spacing	End Attachments of Stiffeners	Size of Openings	Height of Sills	Height of Casings
Poop Bulkhead ...	494 44	44	10.3 1/2 x 40 B.A.	24" To 36"	Welded to Bottom	2 @ 5' x 2' 6"	18"	8' 0"
Raised Quarter Deck Bulkhead ...			6.3 x 30 B.A.					
Bridge, After Bulkhead ...	32	30	4.3.30 - 320A	24" To 32"	NONE	1 @ 5' x 4' 1/2" 1 @ 5' x 3'	18"	8' 0"
Bridge, Forward Bulkhead ...	46	46	9.3.46 B.A.	28" To 32"	LUGS TOP & BOTTOM	1 @ 5' x 3'	18"	8' 0"
Forecastle Bulkhead ...	30	30	4.3.30 0A	27" To 32"		2 @ 4' x 3' 1/2" 3 @ 5' x 2' 1/2" 1 @ 4' 3' x 2' 3"	18"	8' 0" To 8' 8"
Trunk, Aft ...								
Trunk, Forward ...								
Exposed Machinery Casings on Freeboard or Raised Quarter Decks ...								
Exposed Machinery Casings on Superstructure Decks (POOP DECK) ...	34	30	3 x 3 x 30	30	BENTS AT CASING TOP	2 @ 5' x 2'	18"	8' 0"
Machinery Casings within Superstructures not fitted with Class I Closing Appliances ...	NONE							
Deckhouses on Flush Deck Ships ...								

Particulars of Closing Appliances (state if capable of being manipulated from both sides).

Poop Bulkhead ...	STEEL HINGED WATERTIGHT DOORS, OPERATED FROM BOTH SIDES.
Raised Quarter Deck Bulkhead ...	
Bridge, After Bulkhead ...	1 TONNAGE OPENING WITH 3" BOARDS FULL HEIGHT IN CHANNELS RIVETTED TO BULKHEADS ALSO FITTED WITH BOLTED PLATE.
Bridge, Forward Bulkhead ...	1 HINGED STEEL WATERTIGHT DOOR OPERATED FROM BOTH SIDES.
Forecastle Bulkhead ...	STEEL HINGED WATERTIGHT DOORS OPERATED FROM BOTH SIDES.
Exposed Machinery Casings on Freeboard or Raised Quarter Decks ...	1 HINGED STEEL WATERTIGHT DOOR TO PUMP ROOM OPERATED FROM BOTH SIDES
Exposed Machinery Casings on Superstructure Decks ...	2 TONNAGE OPENINGS WITH 3" CHANNELS & BOARDS FULL HEIGHT CHANNELS RIVETTED TO BULKHEAD.
Machinery Casings within Superstructures not fitted with Class I Closing Appliances ...	STEEL HINGED DOORS OPERATED FROM BOTH SIDES.
Deckhouses on Flush Deck Ships ...	

PARTICULARS OF PROTECTION TO OPENINGS, ETC.

HATCHWAYS ON FREEBOARD AND SUPERSTRUCTURE DECKS.									
<div style="display: flex; justify-content: space-between;"> <--- FREEBOARD DK ---> > FCLE DK <--- POOP DECK ---> </div>									
Description of Hatchway
Dimensions of Hatchway
COAMINGS	Height above Deck
	Thickness
	Sides
	Ends
HATCH BEAMS	Number
	Spacing
	Scantling and Sketch
	Bearing Surface
FORE AND AFTERS	Number
	Spacing
	Unsupported Lengths
	Scantling* and Sketch
HATCH COVERS	Material
	Thickness
	How fitted
	Bearing Surface
Spacing of Cleats
Number of Tarpaulins

*Are wood fore and afters steel shod at all bearing surfaces? ☒

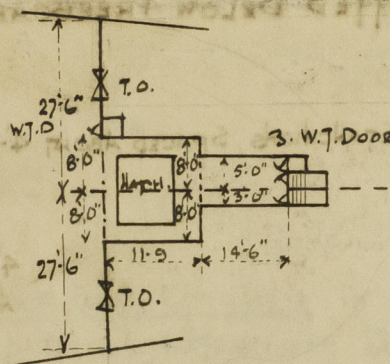
Are battens and wedges efficient and in good condition? ☒ *Yes.*

Are tarpaulins in good condition and in accordance with rule requirements? ☒ *YES*

Are lashings provided in accordance with rule requirements? ☒

Particulars of any special features:—

SKETCH OF FCLE END



Endorsement at first survey and at surveys for renewal of Certificate:—

The fittings and appliances are in accordance with the particulars shown on this form (or as now modified) and are in good condition.



© 2020

Lloyd's Register Foundation