

LONGITUDINAL SECTION AND SPAR PLAN.

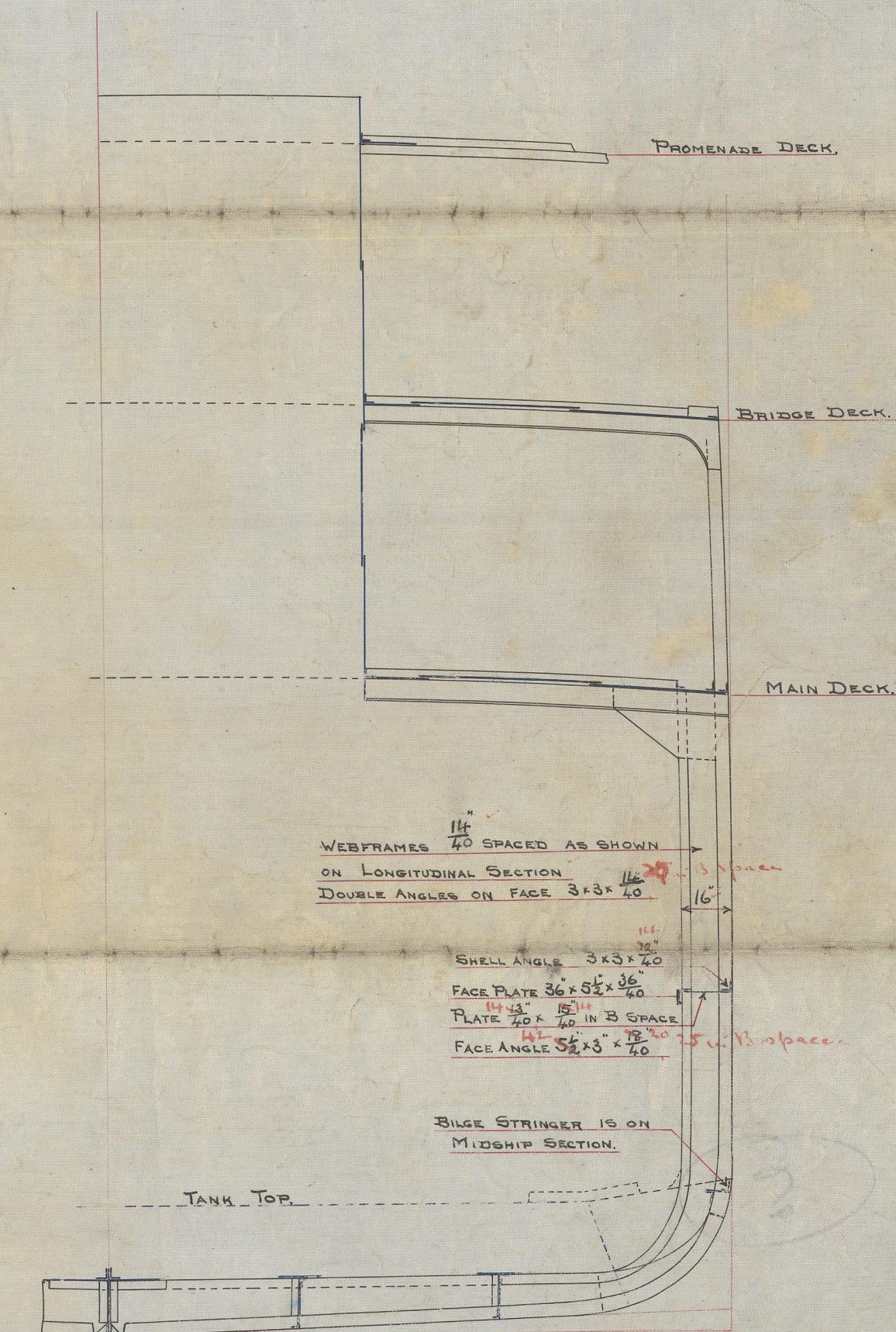
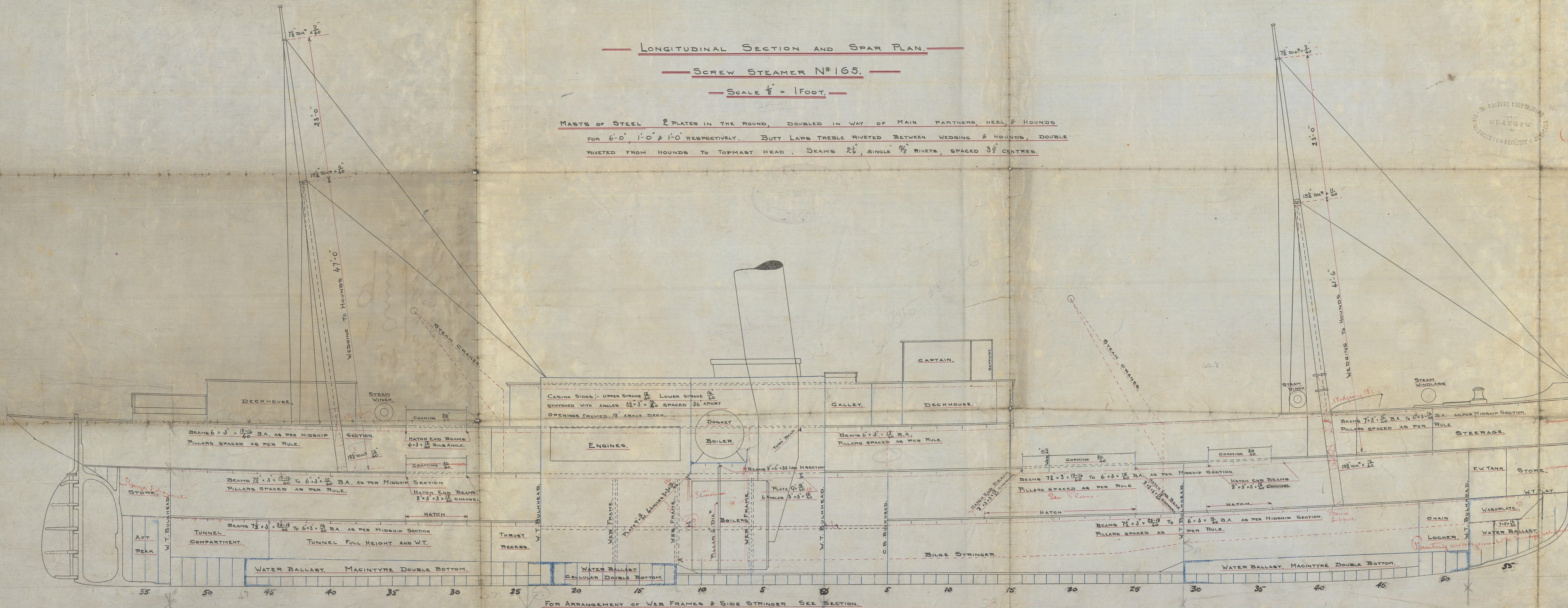
= SCREW STEAMER N<sup>o</sup> 165.

SCALE  $\frac{1}{8}'' = 1 \text{ FOOT.}$

MASTS OF STEEL 2 PLATES IN THE ROUND, DOUBLED IN WAY OF MAIN PARTNERS, HEEL & HOUNDS  
FOR 6'-0", 1'-0" & 1'-0" RESPECTIVELY. BUTT LAPS TREBLE RIVETED BETWEEN WEDGING & HOUNDS, DOUBLE  
RIVETED FROM HOUNDS TO TOPMAST HEAD. SEAMS  $2\frac{1}{2}"$ , SINGLE  $5\frac{7}{8}"$  RIVETS, SPACED  $3\frac{1}{2}"$  CENTRES.

SECTION SHOWING WEB FRAMES & SIDE STRINGER.

— SCALE  $\frac{1}{4}'' = 1 \text{ FOOT}$



002485 002489-0075

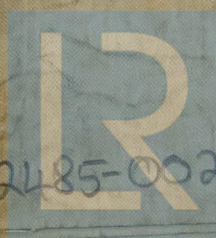


Alsa P. 6. N: 165.

Longitudinal Section  
Spar Plan

S.S. Arman

Масштаб 1:10000



© 2020

002485-002489-0015  
Lloyd's Register  
Foundation