

# Lloyd's Register of Shipping.

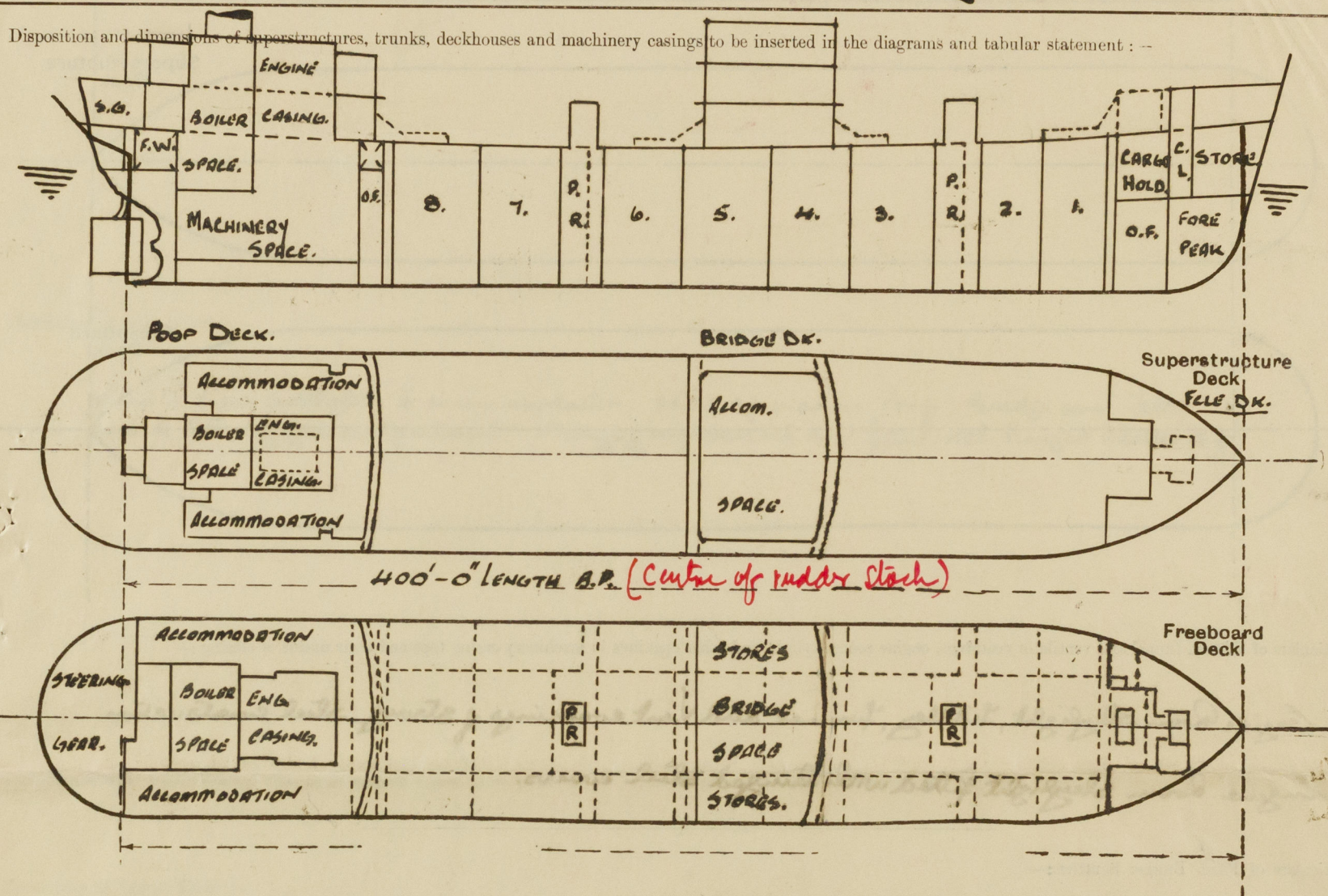
## SURVEYS FOR FREEBOARD.

(CONDITIONS OF ASSIGNMENT.)

 Index No.  
(For London Office only).
N<sup>o</sup> 34489

Ship's Name M.V. "BRITISH COMMERCE" Port of Survey Sunderland.  
 Official Number 180903 Surveyor's Signature Neil F.H. Duncan.  
 Nationality and Port of Registry British: London. Date of Survey During Construction.

Disposition and dimensions of superstructures, trunks, deckhouses and machinery casings to be inserted in the diagrams and tabular statement: --



Particulars of Superstructures, Trunks, Casings, Deckhouses.								
	Coaming	Plating	Stiffeners	Spacing	End Attachments of Stiffeners	Size of Openings	Height of Sills	Height of Casings
Poop Bulkhead ...	44"	44"	9x3 1/2 x 44" 5	26 1/2 - 30	100% T.B.	2 @ 4'-1" x 3'-1"	18"	8'-0"
Raised Quarter Deck Bulkhead ...								
Bridge, After Bulkhead ...	30"	30"	4x8 x 32" L	24" - 30"	✓	2 @ 4'-1" x 3'-1"	19"	8'-0"
Bridge, Forward Bulkhead ...	44"	44"	8x3 x 42" 5	24" - 32 1/2"	Lugs T.B.	1 @ 5'-0" x 3'-0"	18"	8'-0"
Forecastle Bulkhead ...	30"	30"	4x3 x 30" L	24" - 30"	✓	2 @ 4'-1" x 3'-1"	19"	8'-0"
Trunk, Aft ...						2 @ 4'-3" x 2'-3"	18"	8'-0"
Trunk, Forward ...								
Exposed Machinery Casings on Freeboard or Raised Quarter Decks ...								
Exposed Machinery Casings on Superstructure Decks (BOILER) ...	30"	26"	3 1/2 x 3 x 30" L	30"	3 KTS. TOP.	2 @ 4'-3" x 2'-3"	18"	8'-0"
Machinery Casings within Superstructures not fitted with Class I Closing Appliances ...								
Deckhouses on Flush Deck Ships ...								

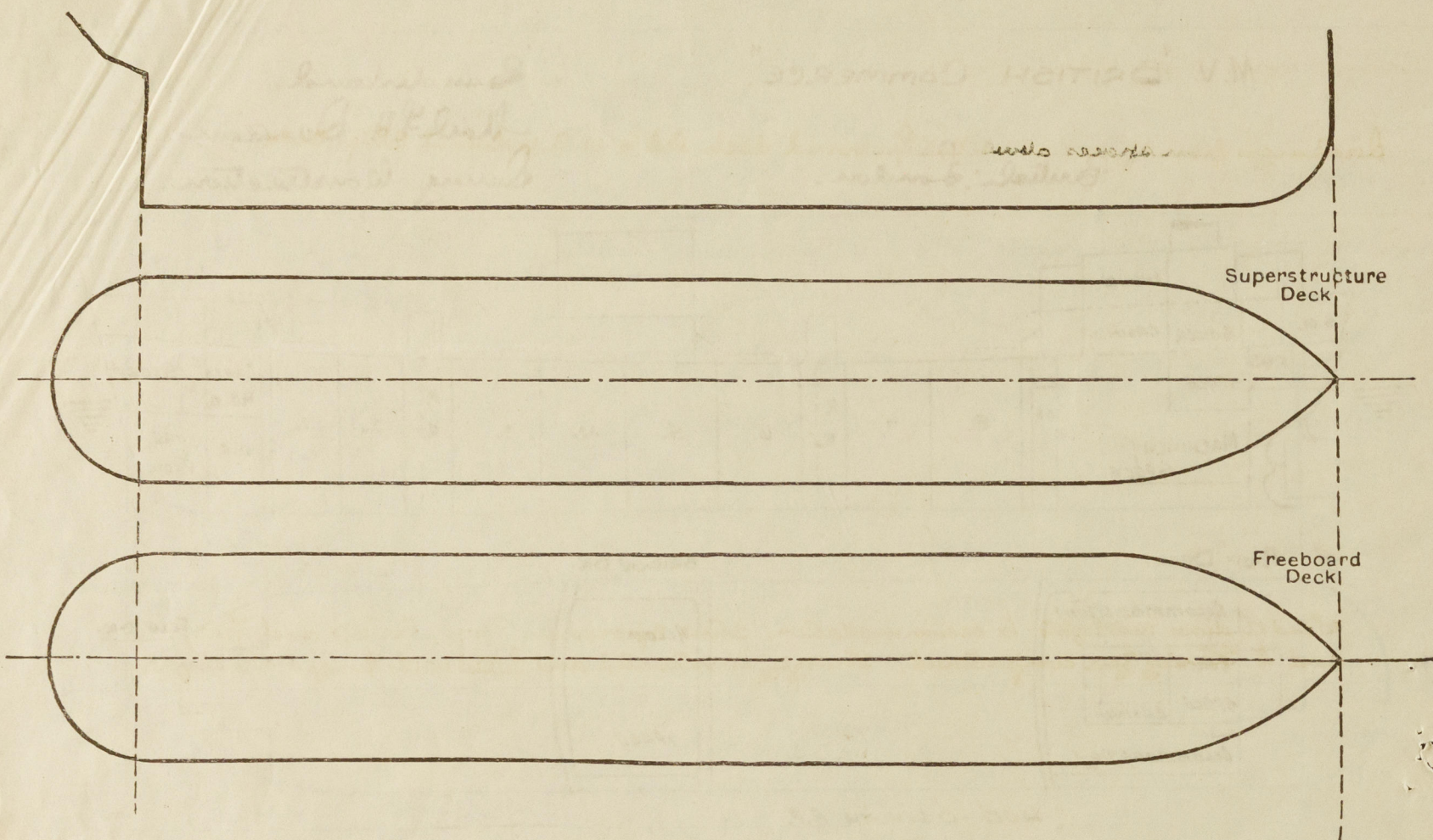
Particulars of Closing Appliances (state if capable of being manipulated from both sides).

Poop Bulkhead ...	Two mechanics W.T. Doors 5'-0" x 3'-0" with 18" Coamings.
Raised Quarter Deck Bulkhead ...	
Bridge, After Bulkhead ...	2 Openings 4'-1" x 3'-1" 19" Coamings 3" Sheeting boards in channels: 1 mechanics W.T. Door 4'-3" x 2'-3" 18" Coamings.
Bridge, Forward Bulkhead ...	One mechanics W.T. Door 5'-0" x 3'-0" 18" Coaming.
Forecastle Bulkhead ...	2 Openings 4'-1" x 3'-1" 19" Coamings 3" Sheeting boards in channels: 1 mechanics W.T. Door 4'-3" x 2'-3" 18" Coamings
Exposed Machinery Casings on Freeboard or Raised Quarter Decks ...	To Fuel Pump Room: 1 Steel-rubbered door 4'-3" x 2'-3" 18" Coaming, opening from both sides to Chain Locks.
Exposed Machinery Casings on Superstructure Decks (BOILER) ...	Two mechanics W.T. Doors 4'-3" x 2'-3" with 18" Coamings.
Machinery Casings within Superstructures not fitted with Class I Closing Appliances ...	
Deckhouses on Flush Deck Ships ...	



# PARTICULARS OF PROTECTION TO OPENINGS, ETC.

The following diagrams should be used to indicate the positions of cargo and coaling hatchways, gangway, cargo and coaling ports, ventilators, companionways, etc., which would affect the seaworthiness of the ship:—



Particulars of fiddle, funnel and ventilator coamings, engine room skylight and other openings in machinery casing tops and their means of closing:—

Engine Room skylight, fiddle, funnel and vent coamings of strong steel construction  
Engine Room skylight fitted with hinged steel covers.

Particulars of Flush Bunker Scuttles:—

None.

Particulars of Companionways:— Pump Room entrances (2 off) Plating 30, Stiffeners 1 1/2 x 3 x 30 or with 3 x 3 x 30 riv. bars fitted to fore hold, spaced 24" apart. Wets to 6" at ends. Sup to 5" at sides. Deck opening 6'0" x 5'0", skylight 6'0" x 4'6" Hinged W.T. Dow 4'3" x 2'3" Coaming 18" Pump Room entrance opening 4'3" x 2'3" Coaming 18" fitted with hinged steel W.T. Dow.

Particulars of Ventilators in exposed positions on freeboard and superstructure decks:—

1-6" Cowl Vent Coamings 30' x 30' to Fore Peak Stone.  
3-8" " " " 30' x 30' to Fore hold.  
2-12" " " " 30' x 34' to Fore Hold.  
1-12" " " " 30' x 34' to Fore Pump Room } On Forecastle Deck.

2-6" Cowl Vents Coamings 30' x 30' to Steering Gear  
2-6" " " " 30' x 30' to Store Rooms.  
1-9" " " " 30' x 32' to Refrig. Machy. } On Poop Deck.

Cowl Vents closed by means of wood plugs and canvas covers.

Particulars of Air Pipes in exposed positions on freeboard, raised quarter, or superstructure decks:—

All Air Pipes of a patent type and in accordance with approved plan  
"Automatic Vent Pipes for Oil Fuel and W.B. tanks" 3-1-46.

Particulars of Gangway Cargo and Coaling Ports:—

None.

Particulars of Scuppers and Sanitary Discharge Pipes:—

Discharges from spaces above the freeboard deck led to N.E. valves at ship's side.

Particulars of Side Scuttles:—

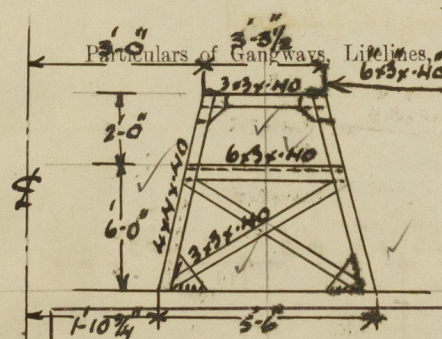
10" and 12" diam. sidelights, to accommodation, stow spaces in Poop, Bridge and Fore, and to Steering Gear compartment, strongly constructed and fitted with hinged deadlights.

Vertical distance of Sill of lowest Side Scuttle above top of keel

36'-0"

Particulars of Guard Rails:—

Open Rails fore and aft. 5'-6" in height. Steel Bulwarks amidships forward of Bridge 23'-0" with one freeing port 3'-9" x 9". Off of Bridge 23'-6" with one freeing port 4'-5" x 9".



Fore & Aft Gangway 5'-0" in height from Poop to Bridge, and from Bridge to Fore. 3'-3" in height from Poop to Bridge. Stringer angled 6' x 3' x 10'. Gangway supports 12 forward, 14 aft. Spaced approx 8'-11" and 8'-0" apart. Fore & Aft Parosing 2 forward 1 aft. Hand rails 5'-6" in height with stanchions spaced 4'-6" apart. Gangway supports welded to deck.

Particulars of Freeing Arrangements.

	Length of Bulwark	Height of Bulwark	Size of Freeing Ports	Number each side	Area each side	Rule area each side
After Well ...						2
Forward Well ...						

State position of each freeing port ... (After Well:—

(F. and A. position and height above deck edge) (Forward Well:—

State whether the freeing ports are fitted with shutters, bars, or rails, and give particulars of such:—

Additional area where sheer is less than standard.



# PARTICULARS OF PROTECTION TO OPENINGS, ETC.

HATCHWAYS ON FREEBOARD AND SUPERSTRUCTURE DECKS.										
Description of Hatchway			...	...	<u>Main Cargo Tank Hatches on Upper Deck.</u>					
Dimensions of Hatchway			...	...	6'-0" x 4'-0" with Coamings 12" x 50" plate welded to deck					
COAMINGS	{	Height above Deck	...	...	Steel covers 6'4" with 16 Toggles per cover. ✓					
		Thickness	...	Sides	...					
		Stiffeners	...	Ends	...	<u>Cargo Hatch forwd.</u>				
		Brackets, Stays	...	...	...	10'-0" x 6'-9" with Coamings 30" x 44" plate 3 1/2 x 3 1/2 x 44 angle to deck.				
HATCH BEAMS	{	Number	...	...	with 50" steel covers. 17 Toggles. ✓					
		Spacing	...	...	<u>Offendams Aft.</u>					
		Scantling and Sketch	...	...	3 W.T. Manholes 24" x 19" Coamings 12" x 50" welded to deck Top plate bolted 50"					
		Bearing Surface	...	...						
FORE AND AFTERS	{	Number	...	...	<u>Offendams Forward.</u>					
		Spacing	...	...	3 W.T. Manholes 24" x 19" Coamings 12" x 50" welded to deck					
		Unsupported Lengths	...	...	Top plate bolted 50					
		Scantling* and Sketch	...	...	<u>O.F. Cross Bunker:</u> 2 @ 3'-0" x 3'-0" Coamings 2'-6" x 4'-0" welded to deck, Steel Covers 50 7 Toggles ✓ <u>Hole between decks.</u> Hatch 3'-0" x 3'-0" Coaming 9" x 4'-0" welded to deck, Steel Covers 50 7 Toggles ✓					
Bearing Surface	...	...	<u>Poop Deck.</u>							
HATCH COVERS	{	Material	...	...	Hatch to Store of 2'-6" x 2'-6" Coaming 2'-6" x 3'-0" 3 x 3 x 3/8 angle to deck, Steel Cover 50 6 Toggles. ✓					
		Thickness	...	...	Hatch to Repair Space 2'-9" x 2'-9" Coaming 2'-7 1/2" x 3'-8" with 2 1/2 wood covers 3" bearing surface, 2 tarpaulins					
		How fitted	...	...	Cleats spaced 18" ✓					
		Bearing Surface	...	...						
Spacing of Cleats			...	...	<u>Fore Deck.</u>					
Number of Tarpaulins			...	...	O.T. Hatch 20 3/4 x 20 3/4 Coamings 12" x 3" Steel covers 50" with 5 Toggles.					
*Are wood fore and afters steel shod at all bearing surfaces? ✓										
Are battens and wedges efficient and in good condition? ✓										
Are tarpaulins in good condition and in accordance with rule requirements? ✓										
Are lashings provided in accordance with rule requirements? ✓										

Particulars of any special features:—

The sheer height at the After perp., if the sheer curve were continued is 4'-2"  
 The height of the Poop deck at side above the projected sheer curve at the After perp., is 7'-10 3/8"

Endorsement at first survey and at surveys for renewal of Certificate:—

The fittings and appliances are in accordance with the particulars shown on this form (or as now modified) and are in good condition.

