

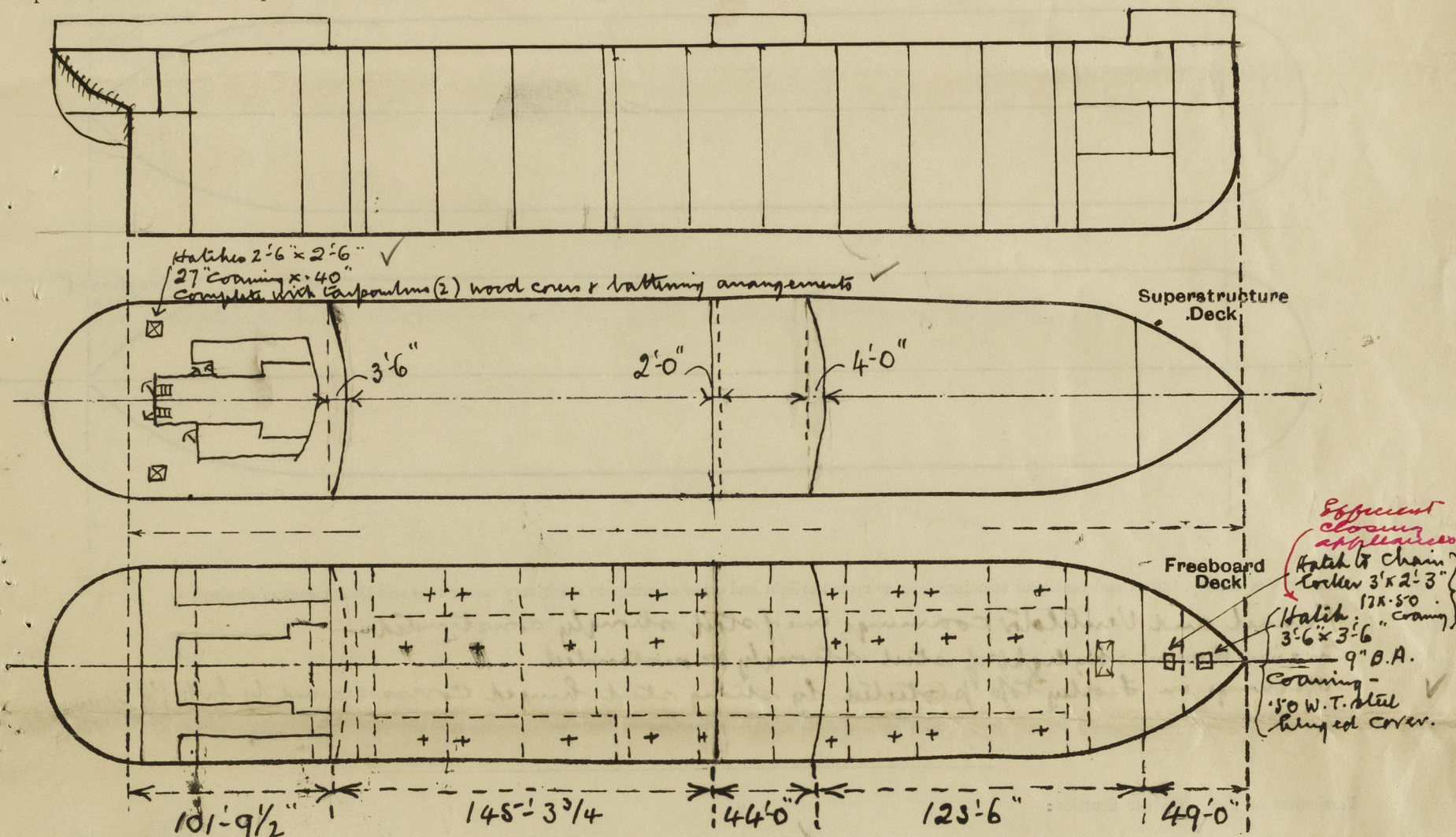
Lloyd's Register of Shipping.

SURVEYS FOR FREEBOARD.

(CONDITIONS OF ASSIGNMENT.)

Ship's Name **"BRITISH HARMONY"**Port of Survey **Walker-on-Tyne**Official Number **168214**Surveyor's Signature **E. H. Dean**Nationality and Port of Registry **British, London**Date of Survey **During Construction.**

Disposition and dimensions of superstructures, trunks, deckhouses and machinery casings to be inserted in the diagrams and tabular statement:--



Particulars of Superstructures, Trunks, Casings, Deckhouses.

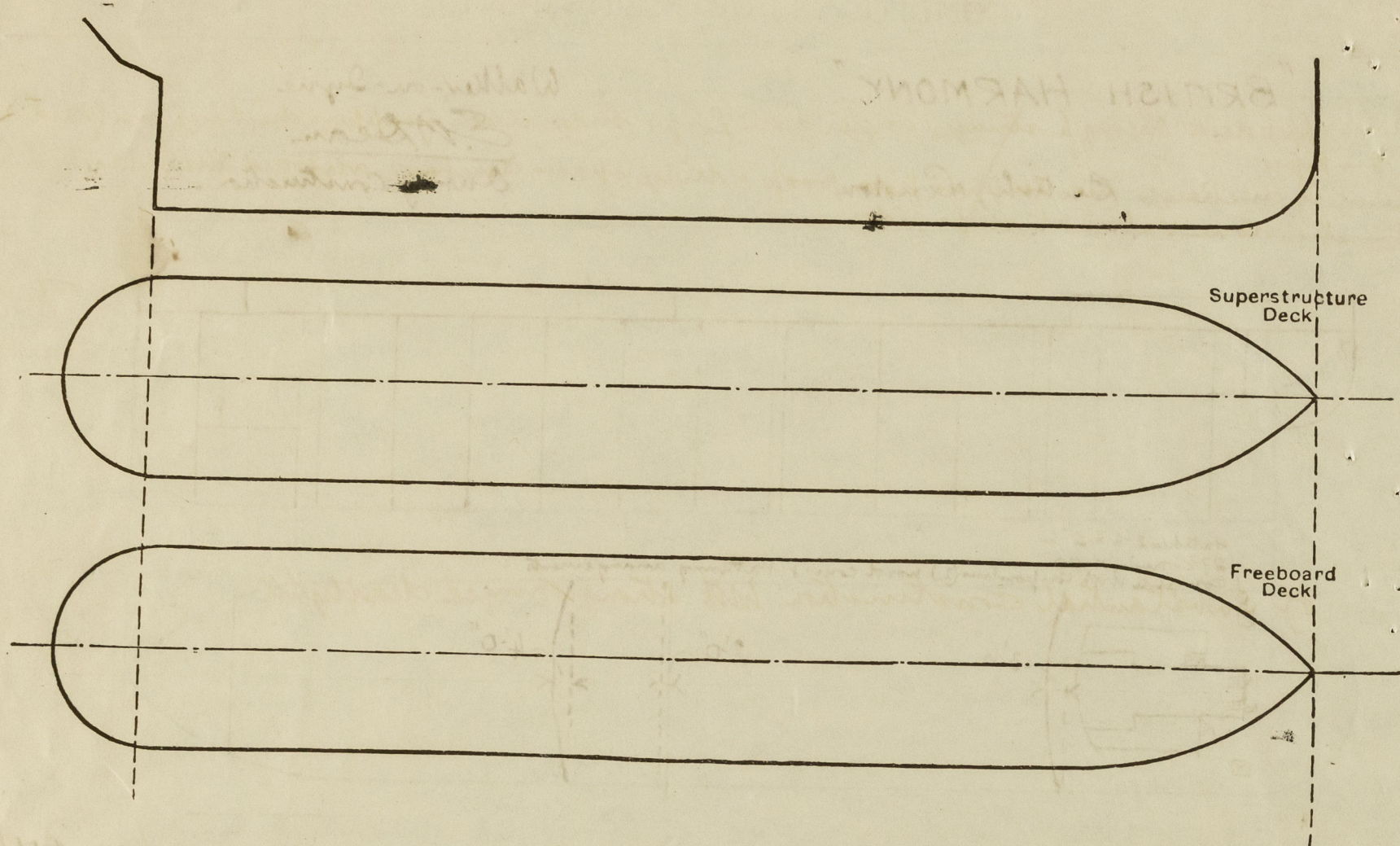
	Coaming	Plating	Stiffeners	Spacing	End Attachments of Stiffeners	Size of Openings	Height of Sills	Height of Casings
Poop Bulkhead ...	-	.44"	10 x 3 1/2 x .40 B.A.	30"	Lugged.	2 @ 5'-3 x 2'-3"	21"	8'-0"
Raised Quarter Deck Bulkhead ...	-							
Bridge, After Bulkhead ...	-	.30"	4 1/2 x 3 x .34	30"		2 @ 4'-1 x 3'-1" 1 @ 4'-3 x 2'-3"	21"	8'-0"
Bridge, Forward Bulkhead ...	-	.44"	10 x 3 1/2 x .40 B.A.	30"	Lugged.	1 @ 5'-3 x 2'-3"	21"	8'-0"
Forecastle Bulkhead ...	-	.30"	4 x 3 x .32	20"		2 @ 4'-1 x 3'-1"	21"	8'-0"
Trunk, Aft ...	-							
Trunk, Forward ...	-							
Exposed Machinery Casings on Freeboard or Raised Quarter Decks ...	-							
Exposed Machinery Casings on Superstructure Decks ...	-	.30"	3 x 3 x .30	25"	13 Kt. at top	5 @ 5'-0 x 2'-0"	18"	8'-0"
Machinery Casings within Superstructures not fitted with Class I Closing Appliances ...	-							
Deckhouses on Flush Deck Ships ...	-							

Particulars of Closing Appliances (state if capable of being manipulated from both sides).

Poop Bulkhead ...	2 W.T. doors operated both sides. ✓
Raised Quarter Deck Bulkhead ...	-
Bridge, After Bulkhead ...	1 W.T. door operated both sides & 2 openings closed by portable plates with hook bolts. ✓
Bridge, Forward Bulkhead ...	1 Steel hinged W.T. door operated from both sides ✓
Forecastle Bulkhead ...	2 openings closed by portable plates with hook bolts. ✓
Exposed Machinery Casings on Freeboard or Raised Quarter Decks ...	-
Exposed Machinery Casings on Superstructure Decks ...	5 steel hinged doors operated both sides. ✓
Machinery Casings within Superstructures not fitted with Class I Closing Appliances ...	-
Deckhouses on Flush Deck Ships ...	-

PARTICULARS OF PROTECTION TO OPENINGS, ETC.

The following diagrams should be used to indicate the positions of cargo and coaling hatchways, gangway, cargo and coaling ports, ventilators, companionways, etc., which would affect the seaworthiness of the ship:—



Particulars of hatches, funnel and ventilator coamings, engine room skylight and other openings in machinery casing tops and their means of closing:—

Funnel and Ventilator coamings are of steel strongly constructed.
Engine Room skylight of steel strongly constructed.
Openings in Fiddle top protected by strong steel hinged covers secured by butterfly screws.

Particulars of Flush Bunker Scuttles:—

none

Particulars of Companionways:—

Strongly constructed steel entrances to pump room on upper deck having steel doors 4'6" x 2'3" with 20" sill closed watertight & being capable of operation both sides.
In after deck house on poop deck - 2 entrance doors to freeboard deck - substantial steel doors - 5'0" x 2'0" - sills 18" operated both sides.

Particulars of Ventilators in exposed positions on freeboard and superstructure decks:—

On Fore Head

5 at 10" dia. Coaming 36" x 32"
1 @ 8" " 36" x 32"

on Bridge deck.

9 at 6" dia. Coaming 36" x 30"

on Poop deck.

6 at 6" dia. Coaming 30" x 30"
2 at 6" " " 30" x 30" mushroom top.

A number of goose-neck vents fitted about poop

Deck generally thus: 3'4" Substantial construction 6'4"

on upper deck

2 at 10" dia. 36" x 32"
1 at 24" high coaming suitably supported.

all Vent coamings closed:-
Wood plugs & canvas covers.

Particulars of Air Pipes in exposed positions on freeboard, raised quarter, or superstructure decks:—

To Rudder tank 3 1/2" dia. 18" high.
" " " " 2 - 3 1/2" dia. 18" high.
" " " " F.W. tanks. 4 - 2 1/2" dia. 18" high.
" " " " Feed tank D.B. 2 - 3 1/2" dia. 18" high.
" " " " D.B. Cofferdam. 1 - 2 1/2" " 18" high.
" " " " Oil fuel D.B. 2 - 4" " 18" "
" " " " " " 2 - 4" " 18" "
" " " " " " 2 - 4" " 18" "
" " " " " " 2 - 4" " 18" "

To fore C.D. 2 - 4" dia. 36" high. } upper on
" " " " " " 2 - 4" " 36" " }
" " " " " " 2 - 4" " 18" " } Fore on

all air pipes where not fitted with flanges closed by wood plugs & canvas covers.

Particulars of Gangway Cargo and Coaling Ports:—

none

Particulars of Scuppers and Sanitary Discharge Pipes:—

From upper deck through stringer angle. From poop & bridge decks scuppers discharge overboard with open pipes.
Sanitary discharges and scuppers from poop & bridge spaces discharge overboard with trans automatic storm valves at ship's sides.

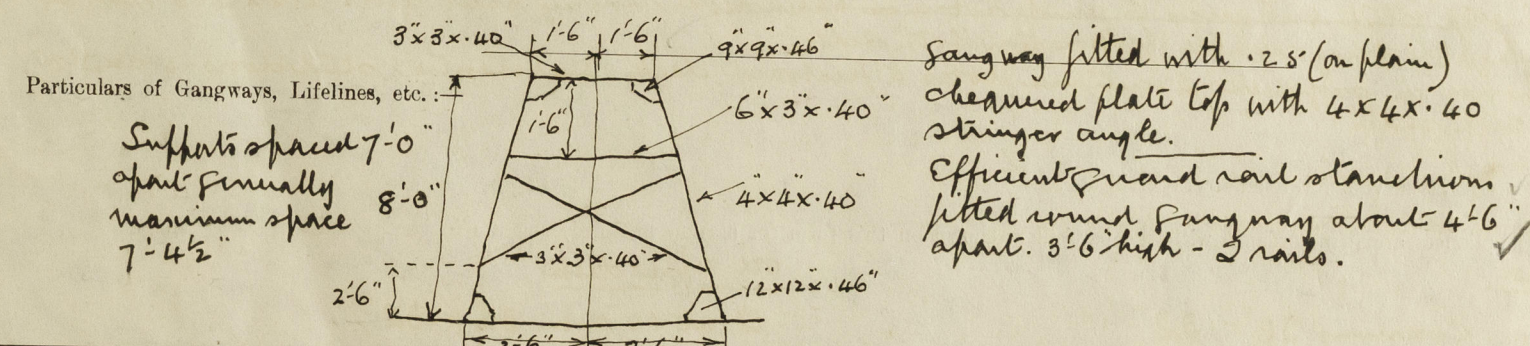
Particulars of Side Scuttles:—

of substantial construction with strong hinged deadlights

Vertical distance of Sill of lowest Side Scuttle above top of keel none below freeboard deck

Particulars of Guard Rails:—

at poop, bridge & fore-castle decks - 3'6" high - 3 rails & stanchions spaced about 4'9" apart.
at Freeboard Deck - 3'6" high - 3 rails
Submarke 3'6" high x 30" thick, 7" B.A. rail bar - 6" ball plate stays, about 6'0" apart, specially stayed adjacent to section ends.



Particulars of Gangways, Lifelines, etc.:—

Supports spaced 7'0" apart generally maximum space 7'4 1/2"

Gangway fitted with 2" x 8" (on plain) chequered plate top with 4" x 4" x 40" stringer angle.
Efficient guard rail stanchions fitted round gangway about 4'6" apart. 3'6" high - 3 rails.

Particulars of Freeing Arrangements.

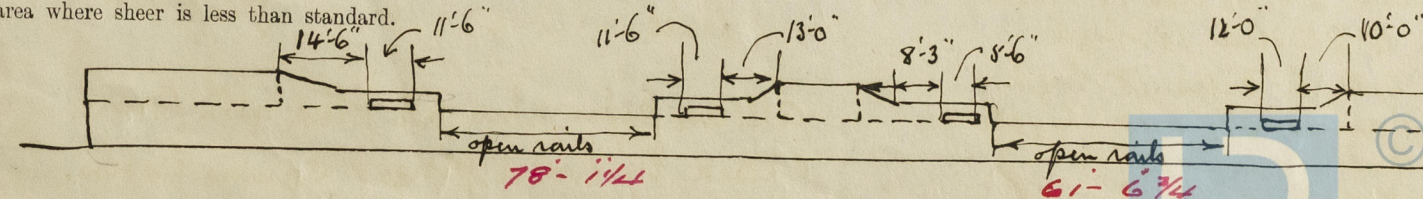
	Length of Bulwark	Height of Bulwark Port	Size of Freeing Ports	Number each side	Area each side	Rule area each side
After Well	145' 3 3/4"	3'6"	as sketch	—	open rails for a length of more than half the length of the exposed part of the weather deck	
Forward Well	123' 6"	3'6"	as sketch	—		

State position of each freeing port ... (After Well:—

(F. and A. position and height above deck edge) (Forward Well:—

State whether the freeing ports are fitted with shutters, bars, or rails, and give particulars of such:—

Additional area where sheer is less than standard.



2020

Lloyd's Register Foundation

PARTICULARS OF PROTECTION TO OPENINGS, ETC.

HATCHWAYS ON FREEBOARD AND SUPERSTRUCTURE DECKS.										
Description of Hatchway		To Wing Cargo Tanks	To Centre Cargo Tanks	To Fuel Tanker	To Fr A. Cofferdams	To Fore hold				
Dimensions of Hatchway		6'0" x 4'0"	6'0" x 4'0"	3'0" x 3'0"	24' x 18"	10'0" x 6'3"				
COAMINGS	Height above Deck	12 x 3 1/2 x 4 5	12 x 3 1/2 x 4 5	12 x 3 1/2 x 4 5	Protected by 12" channel	30"				
	Thickness	B.A.	B.A.	B.A.	Coaming	50"				
	Stiffeners	✓	✓	✓	Coaming	✓				
	Brackets, Stays	✓	✓	✓	Coaming	✓				
HATCH BEAMS	Number									
	Spacing									
FORE AND AFTERS	Number									
	Spacing									
HATCH COVERS	Material	64"	64"	64"	50"	50"				
	Thickness	Steel	Steel	Steel	Steel	Steel				
HATCH COVERS	How fitted	hinged	hinged	hinged	Covers	W.T. cover				
	Bearing Surface	O.T. cover	O.T. cover	O.T. cover		Stitching supported				
Spacing of Cleats		✓	✓	✓	✓	✓				
Number of Tarpaulins		✓	✓	✓	✓	✓				
<p>*Are wood fore and afters steel shod at all bearing surfaces? ✓</p> <p>Are battens and wedges efficient and in good condition? ✓</p> <p>Are tarpaulins in good condition and in accordance with rule requirements? ✓</p> <p>Are lashings provided in accordance with rule requirements? ✓</p>										

Particulars of any special features:—

Displacement at 28'0" draught 17,531 tons. Tons per inch 58.29.
 " " 27'0" " 16,832 " " " 57.87.

Endorsement at first survey and at surveys for renewal of Certificate:—

The fittings and appliances are in accordance with the particulars shown on this form (or as now modified) and are in good condition.



© 2020

Lloyd's Register Foundation