

Lloyd's Register of Shipping.

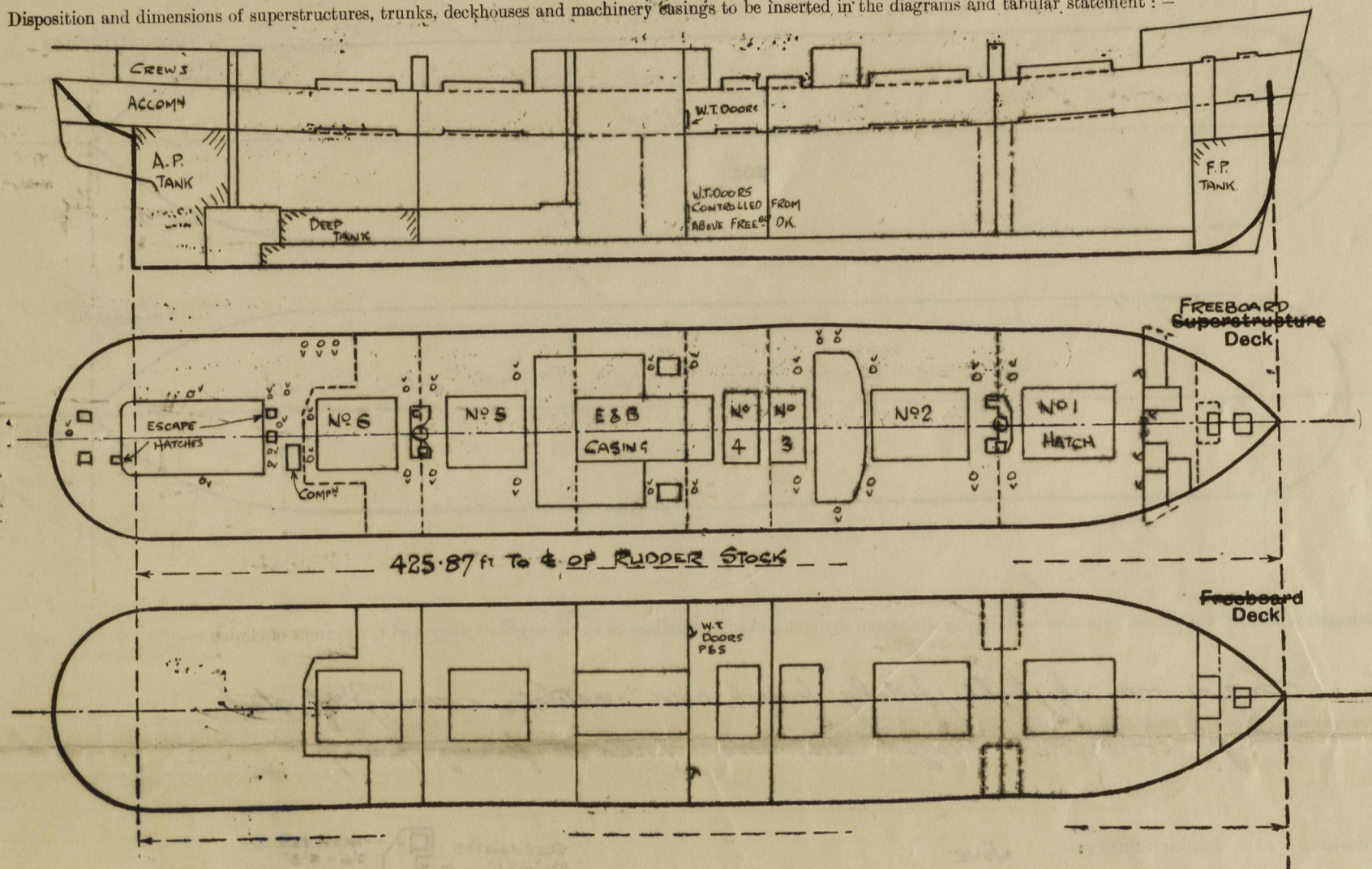
SURVEYS FOR FREEBOARD.

(CONDITIONS OF ASSIGNMENT.)

N^o 34005

Ship's Name "EMPIRE COWDRAY" Port of Survey Sunderland
 Official Number ✓ Surveyor's Signature R. M. Wilson
 Nationality and Port of Registry British, Sunderland Date of Survey While building

Disposition and dimensions of superstructures, trunks, deckhouses and machinery casings to be inserted in the diagrams and tabular statement:—



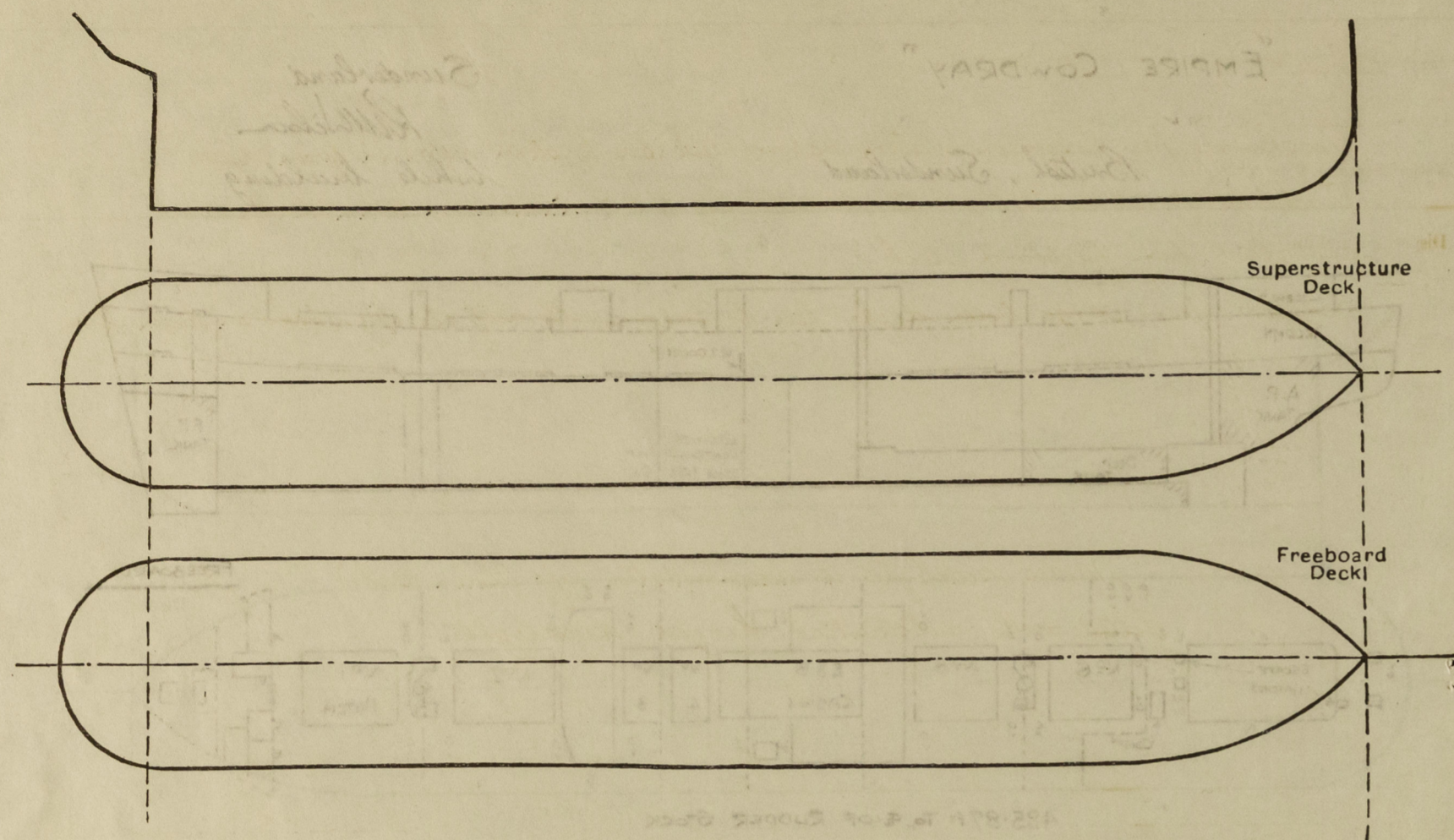
Particulars of Superstructures, Trunks, Casings, Deckhouses.								
	Coaming	Plating	Stiffeners	Spacing	End Attachments of Stiffeners	Size of Openings	Height of Sills	Height of Casings
Peep Bulkheads in TWEEN DECKS...			<i>Carried up to weather deck</i>					
Raised Quarter Deck Bulkhead ...	✓							
Bridge, After Bulkhead ...	✓							
Bridge, Forward Bulkhead ...	✓							
Forecastle Bulkhead ...	30	30	5x3x 5/16 OA	30	✓	3@5'-0" x 2'-3" 1@5'-0" x 4'-1"	18 18	7'-6"
Trunk, Aft ...	✓							
Trunk, Forward ...	✓							
Exposed Machinery Casings on Freeboard or Raised Quarter Decks ...	34	30	3 1/2 x 3 x 40	31	Continuous	4'-8" x 2'-3"	22	7'-9"
Exposed Machinery Casings on Superstructure Decks ...	✓							
Machinery Casings within Superstructures not fitted with Class I Closing Appliances ...	✓							
Deckhouses on Flush Deck Ships ^{FORD} _{AFT}	34 28	30 25	3x3x.35 double to 3x3x.30 @ 32 3x3x.30	39"	Alk T & B. Bkt T & B.	4'-6" x 2'-0" 4'-6" x 2'-0"	24 24	7'-6" 7'-6"

Particulars of Closing Appliances (state if capable of being manipulated from both sides).

Peep Bulkheads in TWEEN DECKS...	<i>W.Y. steel doors P. 65. on bulkhead no. 85 operated from both sides</i>
Raised Quarter Deck Bulkhead ...	✓
Bridge, After Bulkhead ...	✓
Bridge, Forward Bulkhead ...	✓
Forecastle Bulkhead ...	<i>35" plate secured by 3/4" dia hooked bolts. Hinged steel doors operated from both sides</i>
Exposed Machinery Casings on Freeboard or Raised Quarter Decks ...	<i>Hinged steel doors operated from both sides</i>
Exposed Machinery Casings on Superstructure Decks ...	✓
Machinery Casings within Superstructures not fitted with Class I Closing Appliances ...	✓
Deckhouses on Flush Deck Ships ...	<i>W.Y. steel doors operated from both sides</i>

PARTICULARS OF PROTECTION TO OPENINGS, ETC.

The following diagrams should be used to indicate the positions of cargo and coaling hatchways, gangway, cargo and coaling ports, ventilators, companionways, etc., which would affect the seaworthiness of the ship :-

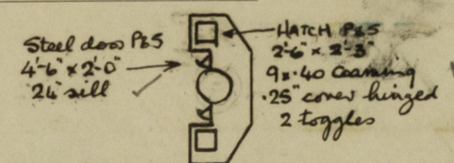


Particulars of fiddle, funnel and ventilator coamings, engine room skylight and other openings in machinery casing tops and their means of closing :-

Engine room skylight, fiddle, funnel, and ventilator coaming of steel strongly constructed. Hinged steel covers fitted at fiddle opening.

Particulars of Flush Bunker Scuttles :-

NONE



DETAIL OF MAST HOUSES.

Particulars of Companionways :-

Companion to after accommodation. Plating 3/16", stiffeners 2 1/2" x 3/8" flats welded, at 24" apart. Steel door 4'6" x 2'0" with 24" sill operated from both sides.

Particulars of Ventilators in exposed positions on freeboard and superstructure decks :-

FORECASTLE			
1- Cowl vent	6" dia coaming	36" x 30"	to stone
1- " "	10" " "	36" x 32"	Accom
1- " "	10" " "	36" x 32"	Tunnel
6 " "	6" " "	36" x 30"	Accom
2 " "	14" " "	36" x 36"	"
2 " "	12" " "	36" x 34"	Bunker
2 " "	10" " "	36" x 32"	hold
2 " "	9" " "	36" x 32"	Refrig Mach
1 " "	9" " "	36" x 32"	Cabin stone
16 " "	18" " "	36" x 40"	holds

Forecastle deck

2- cowl vents 18" dia 36" x 40" Hold
1 " " 10" " 36" x 32" Stone

4-6" dia G.N.Vs to forecastle stone
18" to lip.

All ventilators fitted with wood plug & canvas cover.

Particulars of Air Pipes in exposed positions on freeboard, raised quarter, or superstructure decks :-

Air pipes on freeboard deck 33" to lip
" " forecastle " 18" " "

All air pipes fitted with wood plugs, or gauge and canvas covers.

3/8" dia snifter hole drilled in gooseneck as per Circular M/S. 222/44

Particulars of Gangway Cargo and Coaling Ports :-

NONE

Particulars of Scuppers and Sanitary Discharge Pipes :-

Discharges from houses on or above freeboard deck led to stern valves in tween decks.
Discharges from crews W.C.s in tween decks led to S.D.N.R. Valves in tween decks and controlled from freeboard deck.
Scuppers from cargo tween decks led to bilges with self closing cocks in engine room.

Particulars of Side Scuttles :-

10" dia sidelights to accommodation aft (tween decks) fitted with substantial hinged deadlights

Vertical distance of Sill of lowest Side Scuttle above top of keel

36'-0"

Particulars of Guard Rails :-

Upper Deck:- 3'6" high, 3 rods, stanchions spaced 5 to 6 ft apart
Forecastle Deck:- 3'3" high, 2 rods, stanchions spaced 5 to 6 ft apart
Steel bulwark fitted from after end of engineers house to fore end of saloon house.

Particulars of Gangways, Lifelines, etc. :-

One 2" S.W. lifeline supplied with fittings for same P&S.

Particulars of Freeing Arrangements.

	Length of Bulwark	Height of Bulwark	Size of Freeing Ports	Number each side	Area each side	Rule area each side
After Well Amidships ...	139'-6"	3'-6"	3 fore @ 3'-0" x 1'-3" 2 aft @ 2'-0" x 1'-3"	5		
Forward Well ...	✓					

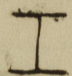
State position of each freeing port ... (After Well:- Amidships)
(F. and A. position and height above deck edge) (Forward Well:- " 11" above deck)

State whether the freeing ports are fitted with shutters, bars, or rails, and give particulars of such :- 1-7/8" dia rod.

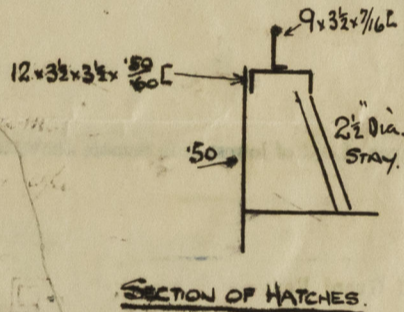
Additional area where sheer is less than standard.

9-3" dia scuppers each side to drain freeboard deck.

PARTICULARS OF PROTECTION TO OPENINGS, ETC.

HATCHWAYS ON FREEBOARD AND SUPERSTRUCTURE DECKS.								
Description of Hatchway	No 1	No 2, 5, 6	No 3	No 4	Bunker Hatches P & S	Bunker Hatch on casing top.		
Dimensions of Hatchway	31'-6" x 20'	31' x 20'	12'-11" x 20'	10'-4" x 20'	15'-6" x 5'-0"	18'-0" x 5'-2"		
COAMINGS { Height above Deck ... Thickness { Sides ... Stiffeners ... Ends ... Brackets, Stays ...	30" 50 B 9 L .44 B 7 L 12 x 3 1/2 x 3 1/2 x 5/16" 3- 2 1/2 Dia	do. do. do. do.	do. do. do. do.	do. do. do. do.	30" .44 .44 50 B 3 x 3 x .44	15" .40 .40 ✓	HATCH TO CHAIN LOCKER 2'-6" x 2'-0" 9 x 3 x .40 L coaming, 2 1/2 covers cleats & 1 tarpaulin ✓	
HATCH BEAMS { Number ... Spacing ... Scantling and Sketch ...  Bearing Surface ...	5 equal 8 x .70 18 1/2 x .36 8 x .70 3/4	5 equal 8 x .68 16 3/4 x .36 8 x .68 3/4	1 equal 8 x .68 19 3/4 x .38 8 x .68 3/4	1 equal 8 x .68 16 3/4 x .36 8 x .68 3/4	✓ ✓	✓ ✓	HATCH TO STORE FORD 4'-0" x 3'-0" 9 x 3 x .40 L coaming, 2 1/2 covers cleats & 1 tarpaulin ✓ ESCAPE HATCH 2'-6" x 2'-0" 18" x .35 Coaming .35 steel cover. ✓	
FORE AND AFTERS { Number ... Spacing ... Unsupported Lengths ... Scantling* and Sketch ... Bearing Surface ...	NONE ✓	✓	✓	✓	✓	✓	ESCAPE HATCH AFT. 2'-0" x 2'-0" 18" x .35 coaming .35 steel cover. ✓ HATCH TO MAGAZINE 2'-0" x 2'-0" 18" x .75 coaming .75 steel cover. ✓ TWO HATCHES TO MAGAZINE AFT 2'-0" x 2'-0" 6 x 3 x .40 OR Coaming .31 steel cover. ✓	
HATCH COVERS { Material ... Thickness ... How fitted ... Bearing Surface ...	W.W. 2 1/2 ✓ F.B.A. 4 ✓	W.W. 2 1/2 ✓ F.B.A. 4 ✓	W.W. 3 ✓ F.B.A. 4 ✓	W.W. 2 1/2 ✓ F.B.A. 4 ✓	W.W. 2 1/2 ✓ THWART 3 ✓	W.W. 2 1/2 ✓ F.B.A. 3 ✓		
Spacing of Cleats	24" ✓	24" ✓	24" ✓	24" ✓	24" ✓	24" ✓		
Number of Tarpaulins	2 ✓	2 ✓	2 ✓	2 ✓	2 ✓	2 ✓		
*Are wood fore and afters steel shod at all bearing surfaces? ✓ Are battens and wedges efficient and in good condition? yes ✓ Are tarpaulins in good condition and in accordance with rule requirements? yes ✓ Are lashings provided in accordance with rule requirements? Locking bars fitted ✓								

Particulars of any special features :—



This vessel has been built to scantlings as per plans approved 10/7/41 in order to obtain a draught of 18" in excess of that corresponding to the freeboard which could be assigned to the vessel with a tonnage opening.

The vessel is of the "Y" type and was originally Messrs Vickers-Armstrongs' Yard No. 828.
a duplicate of their Yard No. 824.

Endorsement at first survey and at surveys for renewal of Certificate :—

The fittings and appliances are in accordance with the particulars shown on this form (or as now modified) and are in good condition.