

Lloyd's Register of Shipping.
SURVEYS FOR FREEBOARD.
(CONDITIONS OF ASSIGNMENT.)

Index No. 13118
(For London Office only).

MoB. No. 18118.

Ship's Name **M.V. "BRITISH ADMIRAL"** (FURNESS. S. B. CO. YARD No 390)

Port of Survey **MIDDLESBROUGH.**

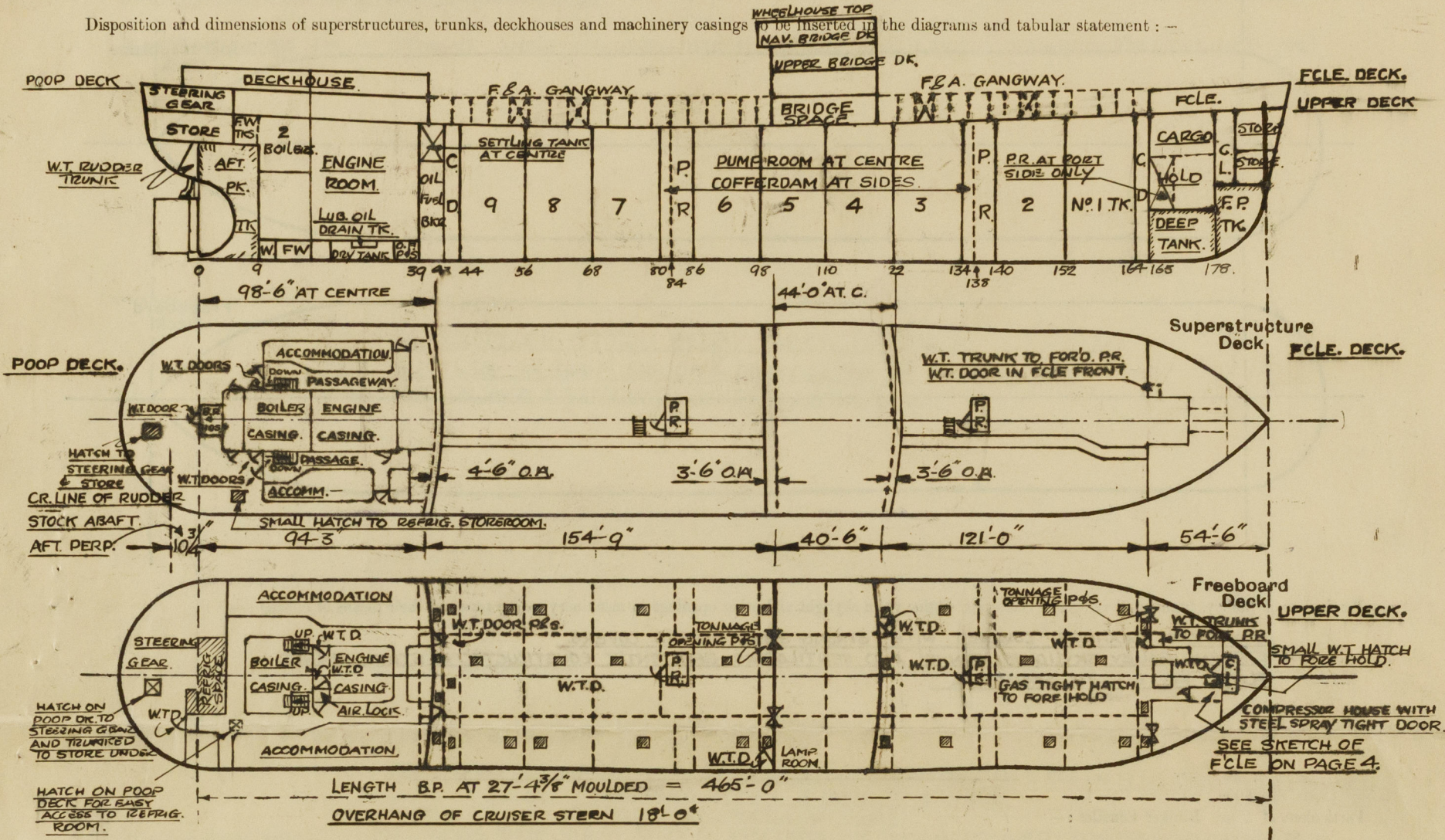
Official Number **181504**

Surveyor's Signature *E. Hymn.*

Nationality and Port of Registry **BRITISH — LONDON.**

Date of Survey **WHILE BUILDING.**

Disposition and dimensions of superstructures, trunks, deckhouses and machinery casings to be inserted in the diagrams and tabular statement : —



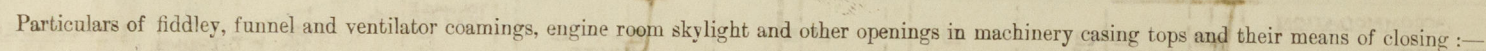
Particulars of Superstructures, Trunks, Casings, Deckhouses.

	Coaming	Plating	Stiffeners	Spacing	End Attachments of Stiffeners	Size of Openings	Height of Sills	Height of Casings
Poop Bulkhead44 ✓	.44 ✓	10"x3 1/2"x40BA	30"	LUGGED AT TOP E.W. BOTTOM.	5'-0"x3'-0" ✓	18" ✓	8'-0" ✓
Raised Quarter Deck Bulkhead ...	—	—	—	—	—	—	—	—
Bridge, After Bulkhead30 ✓	.30 ✓	4"x3"x36 O.A.	30"	E.W. TOP AND BOTTOM.	12'-7"x31" 22'-4"x36 1/2"	16" 19" ✓	8'-0" ✓
Bridge, Forward Bulkhead44 ✓	.44 ✓	10"x3 1/2"x40BA	30"	LUGGED AT TOP E.W. BOTTOM.	5'-0"x3'-0" ✓	18" ✓	8'-0" ✓
Forecastle Bulkhead30 ✓	.30 ✓	4"x3"x36 O.A.	30"	E.W. AT BOTT. AND E.W. AT TOP WHERE CLEAR OF BEAMS.	12'-6"x25" TO CL. 12'-4'-7"x30" TO PR. 22'-4"x31" TONN.	16" 16" 19"	8'-0"
Trunk, Aft	—	—	—	—	—	—	—	—
Trunk, Forward	—	—	—	—	—	—	—	—
Exposed Machinery Casings on Free- board or Raised Quarter Decks ...								
Exposed Machinery Casings on Super- structure Decks								
Machinery Casings within Superstruc- tures not fitted with Class I Closing Appliances								
Deckhouses on Flush Deck Ships ...	PUMP ROOM ENTRANCES.							

Particulars of Closing Appliances (state if capable of being manipulated from both sides).

Poop Bulkhead	STEEL HINGED W.T. DOORS (I.P.&IS) MANIPULATED FROM BOTH SIDES.
Raised Quarter Deck Bulkhead ...	✓
Bridge, After Bulkhead	STEEL HINGED W.T. DOOR (STARBOARD SIDE TO LAMP LOCKER) MANIPULATED FROM BOTH SIDES. PORTABLE STEEL PLATES SECURED WITH HOOK BOLTS (I.P.&IS). BOLTS — 13" APART & 3" STORM BOARDS IN CHANNELS
Bridge, Forward Bulkhead	STEEL HINGED W.T. DOOR (PORT SIDE) MANIPULATED FROM BOTH SIDES.
Forecastle Bulkhead	PORTABLE STEEL PLATES SECURED WITH HOOK BOLTS (I.P.&IS). BOLTS — 13" APART & 3" STORM BOARDS IN CHANNELS
Exposed Machinery Casings on Free- board or Raised Quarter Decks ...	✓
Exposed Machinery Casings on Super- structure Decks	✓
Machinery Casings within Superstruc- tures not fitted with Class I Closing Appliances	✓
Deckhouses on Flush Deck Ships ...	PUMP ROOM ENTRANCE — FOR'D } STEEL HINGED W.T. DOORS MANIPULATED FROM BOTH SIDES. " " " — AFT }

The following diagrams should be used to indicate the positions of cargo and coaling hatchways, gangway, cargo and coaling ports, ventilators, companionways, etc., which would affect the seaworthiness of the ship :—



STAKEHOLD GRATINGS COVERED WITH STRONG STEEL HINGED COVERS.
E.I.R. AND GALLEY SKYLIGHTS, FUNNEL AND VENTILATORS EFFICIENTLY CONSTRUCTED - STEEL HINGED
FLAPS FITTED TO SKYLIGHTS.

Particulars of Flush Bunker Scuttles :—

NONE

Particulars of Companionways :—

FORD AND AFTER PUMP ROOM ENTRANCES—WELDED—9'-0" x 11'-0" x 7'-5" HIGH.
SIDE PLATING .80—TOP PLATING .80 STIFFS AT SIDES AND AFTER ENDS 3x: 40 WELDED FLATS
SPACED 27"—AT FORD ENDS 4'x4' .33 ANGLES WITH TOES WELDED TO CASING 30" APART
AND ALL BRACKETED AT TOP AND WELDED AT BOTTOM.
STEEL W.T. DOORS AT AFTER ENDS. MANIP. FROM BOTH SIDES—OPENINGS 4'3"x27" COAMINGS 18"
ENTRANCES AT AFTER END POOP DECK HOUSE CASING—STEEL W.T. DOORS MANIPULATED FROM
BOTH SIDES—OPENINGS 4'x30" COAMINGS 16"
ENTRANCES AT RES. SIDES POOP DECK HOUSE CASING LEADING INTO PASSAGEWAYS & STAIRWAYS
—WOOD DOORS OF SOLID CONSTRUCTION—OPENINGS—5'-6"x30" COAMINGS 15"

Particulars of Ventilators in exposed positions on freeboard and superstructure decks :—

FORECASTLE DECK :-

FORECASTLE DECK LED TO "TWEEN DECK —		2 OFF —	12" DIAM. X	36" X 34 COAMING.	COWL TOP	✓
"	"	1 OFF —	9" DIAM. X	36" X 32 COAMING	" "	✓
"	"	FORE HOLD —	2 OFF —	9" DIAM. X	36" X 34 COAMING.	" "
"	"	FORECASTLE —	2 OFF —	8" DIAM. X	36" X 30 COAMING.	" "
"	"	FORD R.R. —	1 OFF —	12" DIAM. X	36" X 34 COAMING.	" "
"	"	FORE PEAK STORE —	1 OFF —	9" DIAM. X	36" X 32 COAMING.	" "
POOP DECK :-						
POOP DECK LED TO REFRIG. MOTOR —		1 OFF —	8" DIAM. X	30" X 32 COAMING.	COWL TOP	✓
"	"	STEERING GEAR COWL —	2 OFF —	6" DIAM. X	30" X PIPE COAMING.	" "
"	"	STORE ROOMS —	3 OFF —	6" DIAM. X	30" X " "	" "
CASING TOP :-						
CASING TOP LED TO POOP PASSAGEWAY —		2 OFF —	10" DIAM. X	24" X 36 COAMING.	COWL TOP	✓
"	"	DECKHOUSE —	2 OFF —	21" DIAM. X	24" X 36 COAMING.	" "
"	"	PIPE PASSAGE —	1 OFF —	12" DIAM. X	24" X 34 COAMING.	" "
BOAT DECK :-						
BOAT DECK LED TO HOSPITAL'S BATHROOM. —		2 OFF —	8" DIAM. X	24" X 32 COAMING.	MUSHROOM TOP	✓
"	"	ENG'GS. WASHPLACE —	1 OFF —	10" DIAM. X	24" X 32 COAMING.	" "
"	"	STEWARDS. W.P. & W.C. —	2 OFF —	6" DIAM. X	24" X 30 COAMING.	" "
"	"	P.O.S. W.P. & W.C. —	2 OFF —	6" DIAM. X	24" X 30 COAMING.	" "
UPPER DECK :-						
UPPER DECK TO FORD'FT R.R.'S 4 OFF —		24" DIAM. X	10" X 40 COAMING.	COWL TOP	✓	

Particulars of Air Pipes in exposed positions on freeboard, raised quarter, or superstructure decks :

PIPE ON FORECASTLE DECK	I.P.S.	TO FORE PEAK TANK	6" AUTOMATIC VENT	36" HIGH	X
"	"	I.P.S.	TO DEEP TANK	4" DIAM. AUTOMATIC	36" HIGH X
"	"	UPPER DECK (FORE)	TO FWD COFFERDAM	4" DIAM. AUTOMATIC	11-6" HIGH X
"	"	" (AFT)	I.P.S. TO AFT COFFERDAM	4" DIAM. AUTOMATIC	11-6" HIGH X
"	"	POOP DECK	I.P.S. TO SETTLING TANK	4" DIAM. AUTOMATIC	36" HIGH X
"	"	"	I.P.S. TO Q.F. BUNKER	4" DIAM. AUTOMATIC	36" HIGH X
"	"	POOP DECK	I.P.S. TO Q.F. DB TANK	4" DIAM. AUTOMATIC	36" HIGH X
"	"	"	I.P.S. TO D.B. FRY TANK	4" DIAM. GOOSENECK	36" HIGH Ø
"	"	"	I.P.S. TO FW.D.B. TANK	4" DIAM. AUTOMATIC	36" HIGH X
"	"	"	I.P.S. TO AFTER PEAK TANK	6" DIAM. AUTOMATIC	36" HIGH X
"	"	" (Plenty)	TO RUDDER TRUNK	3/4" DIAM. GOOSENECK	36" HIGH Ø
"	"	CASING TOP	I.P.S. TO FW. TANKS	3" DIAM. GOOSENECK	36" HIGH Ø

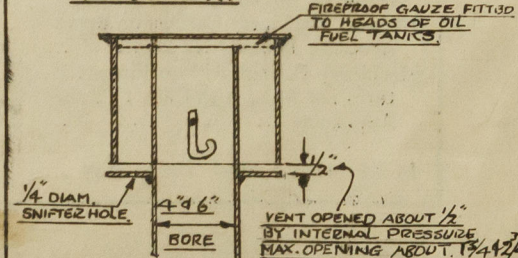
ALL AIR PIPES 36" ABOVE POOP & FORECASTLE DECKS, CONSTRUCTED IN ACCORDANCE WITH RULES AND COAMINGS FITTED WITH:-

APPROVED AUTOMATIC VENT. HEADS MARKED — X
HINGED FLAPS OR WOOD PLUGS — MARKED — X
AIR PIPES TO OIL FUEL TANKS FITTED WITH MONEL METAL FIREPROOF GAUZES

ALL VENTILATORS CONSTRUCTED
IN ACCORDANCE WITH THE
RULES AND COAMINGS GLOSED
WITH :-

HINGED GAS TIGHT FLAPS-MARKED X
WOOD PLUGS & CANVAS COVERS " ✓

AUTOMATIC VENT. PIPES FOR OIL
FUEL AND W.B. TANKS.
MARKED - X.



Particulars of Gangway Cargo and Coaling Ports:—

m/v British Admiral.

NONE FITTED

Particulars of Scuppers and Sanitary Discharge Pipes :—

SCUPPERS AND SANITARY DISCHARGES FROM POOP ACCOMMODATION AND SPACES ALL ABOVE FREEBOARD DECK LED THRO' SHIP'S SIDES ABOVE AND BELOW FREEBOARD DECK THRO' 2-2-4 AND 5 APPROVED AUTOMATIC NON-RETURN VALVES OF SUBSTANTIAL AND EFFICIENT CONSTRUCTION.

SCUPPERS AND SANITARY DISCHARGES FROM THE AMIDSHIP ACCOMMODATION AND SPACES ALL ABOVE FREEBOARD DECK LED THRO' SHIP'S SIDES ABOVE FREEBOARD DECK THRO' 2-2 1/2-3-4 AND 5 APPROVED AUTOMATIC NON-RETURN VALVES OF SUBSTANTIAL AND EFFICIENT CONSTRUCTION.

SCUPPER OPENINGS CUT IN GUNWHALE ANGLE ON UPPER DECK AT PORT AND STARB'D SIDES - OPENINGS - 6"x2" (8 AT EACH SIDE).

Particulars of Side Scuttles:—

NO SIDE SCUTTLES FITTED BELOW FREEBOARD DECK
SIDE SCUTTLES ON POOP, BRIDGE & FORECASTLE OF SUBSTANTIAL
CONSTRUCTION AND FITTED WITH HINGED DEADLIGHTS.

Vertical distance of Sill of lowest Side Scuttle above top of keel..... 39'-6"

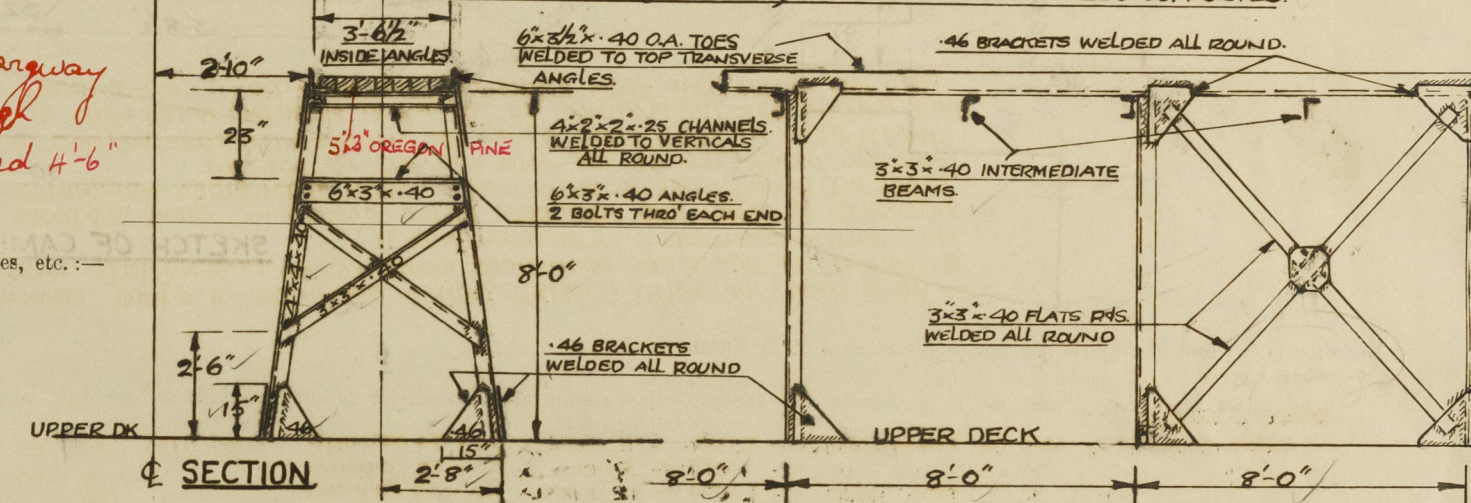
GUARD RAILS ON POOP & FORECASTLE DECKS 3 RODS 3'-9" ON POOP DK. & 3'-6" ON FCLE DK. } WITH STANCHIONS
" " " FREEBOARD DECK 3 RODS 3'-6" HIGH. } SPACED ABOUT 4'-6"
" " " BRIDGE DECK FWD & AFT ENDS }
PART STEEL BULWARKS AT ENDS OF ERECTIONS (SEE SKETCH) EFFICIENTLY CONSTRUCTED & SUPPORTED

Particulars of Guard Rails :—

Guard Rails on Gargway
2 rods - 42" high
Stanchions spaced 4'-6"

Particulars of Gangways, Lifelines, etc. :—

EXTENT OF GANGWAY
POOP TO BRIDGE AND
BRIDGE TO FORECASTLE



Particulars of Freeing Arrangements.

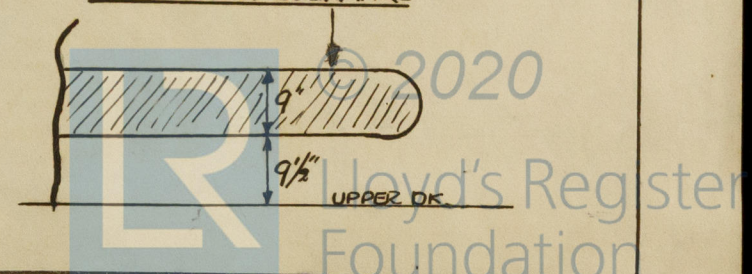
Particulars of Freeing Arrangements.						
	Length of Bulwark	Height of Bulwark	Size of Freeing Ports	Number each side	Area each side	Rule area each side
After Well	<u>AFT OF BRIDGE 43'-9"</u> <u>FORD OF POOP 32'-3"</u>	} <u>3'-6"</u>	<u>FORD - 8'-4" x 9"</u> <u>AFT 10'-0" x 9"</u>	2	✓	✓
Forward Well	<u>AFT OF FOLE 30'-8"</u> <u>FORD OF BRIDGE 23'-6"</u>		<u>FORD - 10'-0" x 9"</u> <u>AFT { 12'-5" x 9"</u> <u>12'-0" x 8"</u>			

State position of each freeing port After Well: **POOP FRONT** **HANDRAILS AND STANCHIONS** **BRIDGE** **HANDRAILS AND STANCHIONS** **ISLE FRONT**
(F. and A. position and height above deck edge) Forward Well: —

State whether the freeing ports are fitted with shutters, bars, or rails, and give particulars of such:—
NO SHUTTERS, BARS OR RAILS FITTED TO FREEING PORTS.

Additional area where sheer is less than standard.

OPENINGS IN BULWARKS



002471-002476-01222

Name of Ship *BRITISH ADMIRAL*

Freeboard Report Examined

(Date) *16 May 1957*

Signed *[Signature]*

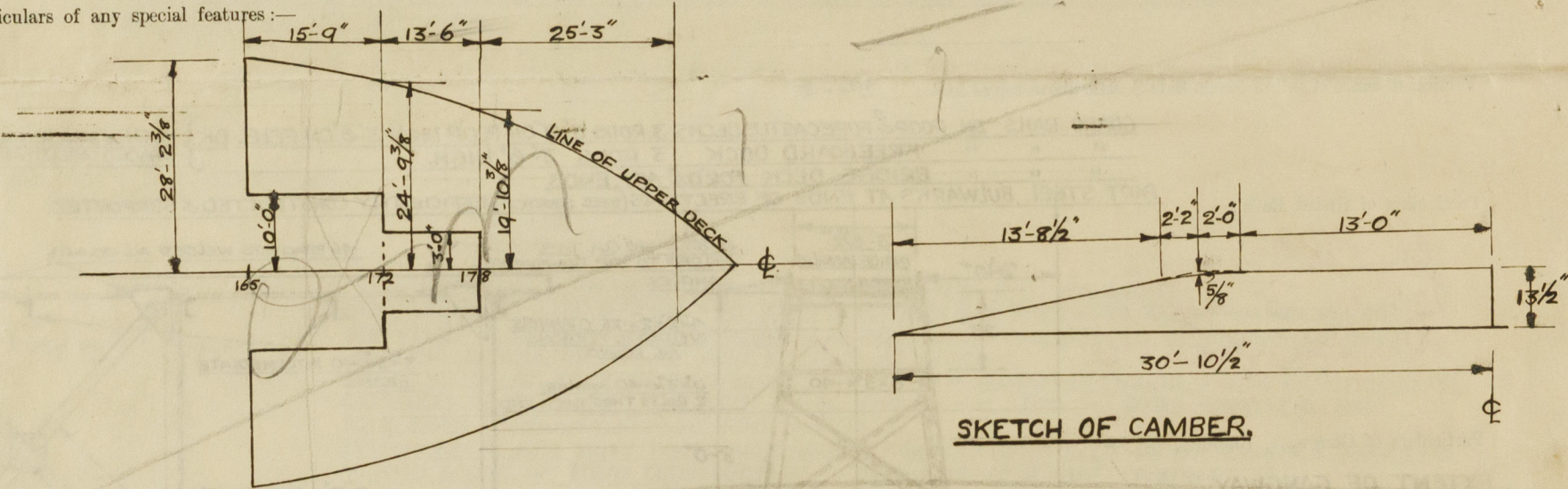
ETC.

g ports,

PARTICULARS OF PROTECTION TO OPENINGS, ETC.

HATCHWAYS ON FREEBOARD AND SUPERSTRUCTURE DECKS.									
Description of Hatchway									
Dimensions of Hatchway									
COAMINGS	Height above Deck								
	Thickness								
	Stiffeners								
	Brackets, Stays								
HATCH BEAMS	Number								
	Spacing								
	Scantling and Sketch								
	Bearing Surface								
FORE AND AFTERS	Number								
	Spacing								
	Unsupported Lengths								
	Scantling* and Sketch								
HATCH COVERS	Material								
	Thickness								
	How fitted								
	Bearing Surface								
Spacing of Cleats									
Number of Tarpaulins									
<p>*Are wood fore and afters steel shod at all bearing surfaces ?</p> <p>Are battens and wedges efficient and in good condition ?</p> <p>Are tarpaulins in good condition and in accordance with rule requirements ?</p> <p>Are lashings provided in accordance with rule requirements ?</p>									

Particulars of any special features :—



Endorsement at first survey and at surveys for renewal of Certificate :—

The fittings and appliances are in accordance with the particulars shown on this form (or as now modified) and are in good condition.