

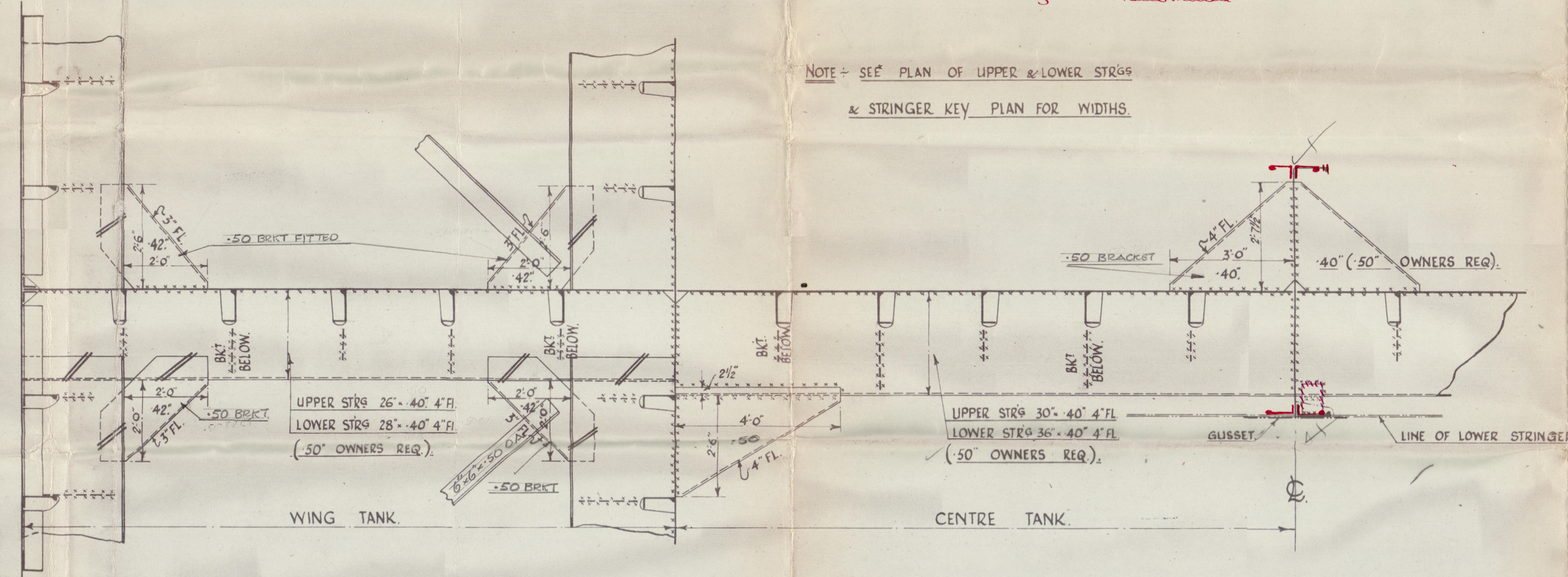
23 FEB 1945
10 OCT 1947 *Rev*

PLAN VIEW AT UPPER STRINGER.

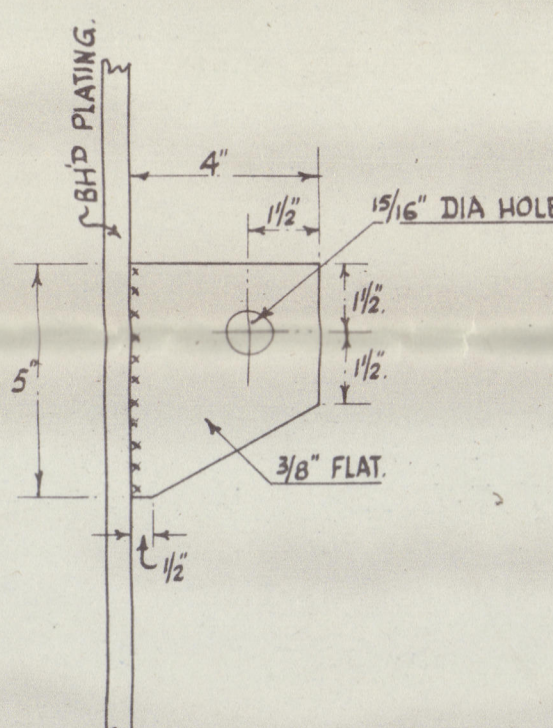
FOR LOWER STRINGER SEE DETAILS OF STRINGERS IN OIL TKS

*Stringer to be increased forward.
Drawing to be submitted*

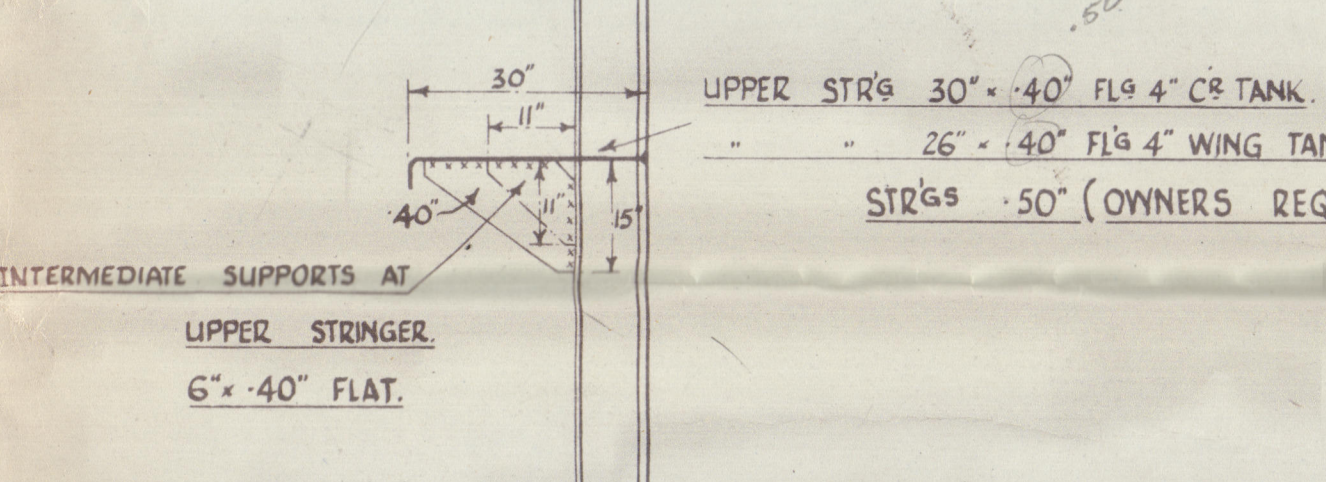
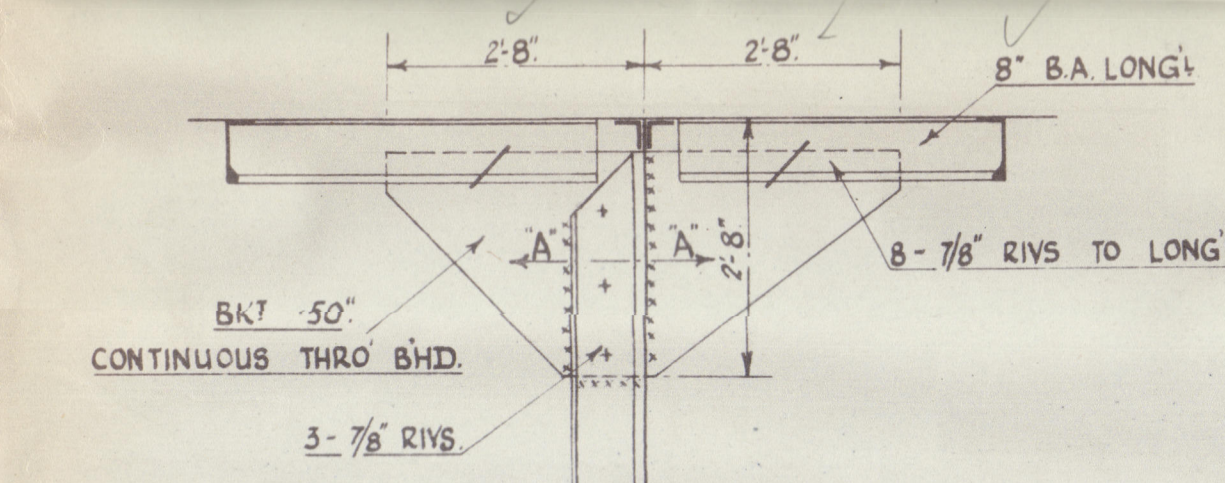
NOTE - SEE PLAN OF UPPER & LOWER STRGGS
& STRINGER KEY PLAN FOR WIDTHS



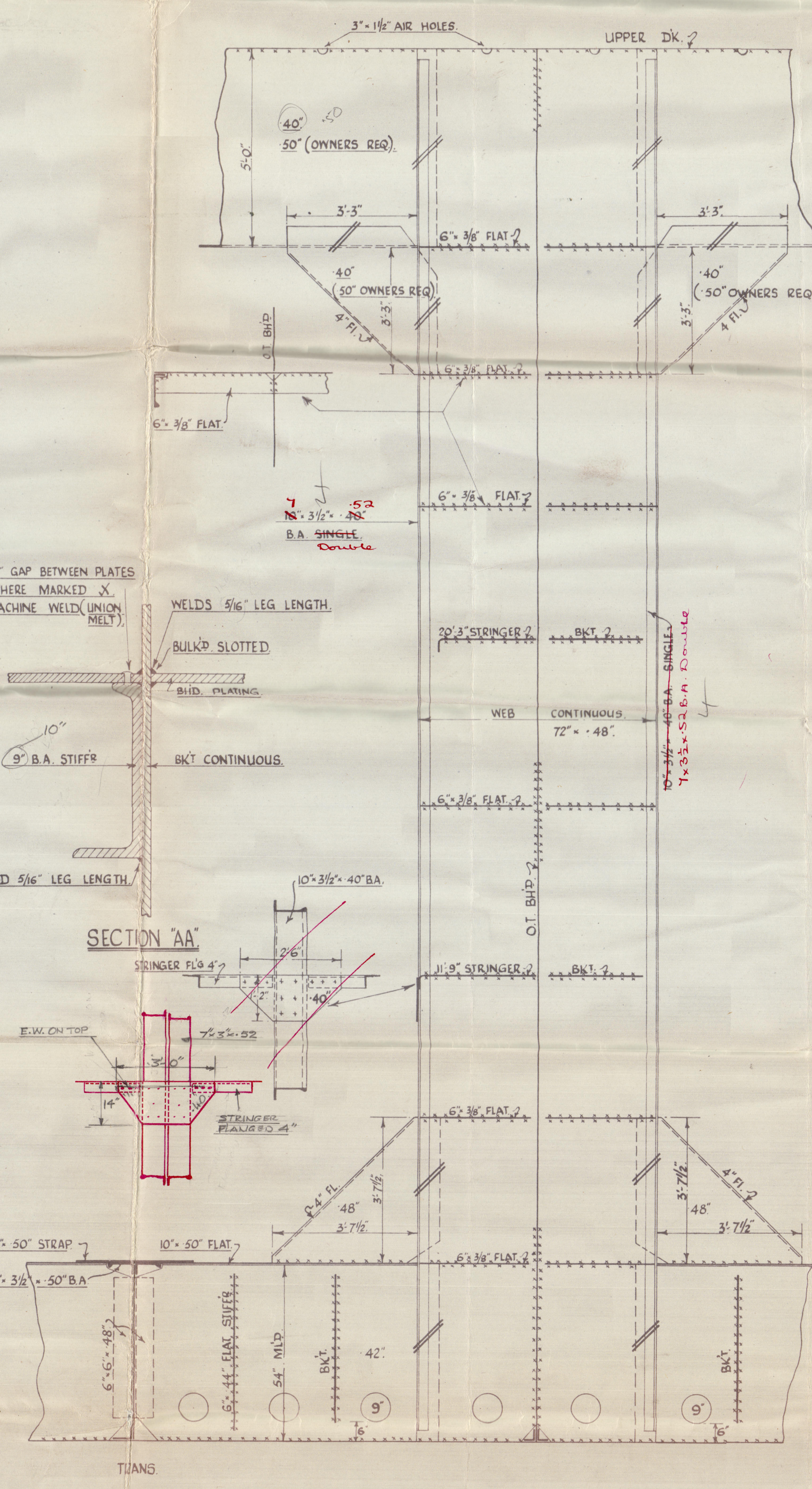
O.T. BULKHEADS IN CENTRE TANKS AT FRAMES 68, 86, 104, 122, 140 LOOKING AFT.
56, 80, 98, 110, 134, 152 LOOKING FORWARD
O.T. BULKHEADS IN WING TANKS AT FRAMES 68, 86, 104, 122, 140 LOOKING AFT.
56, 84, 98, 110, 138, 152 LOOKING FORWARD
FOR STIFFENERS SEE SECTIONS THROUGH O.T. BHD'S



DETAIL OF STAGING LUGS



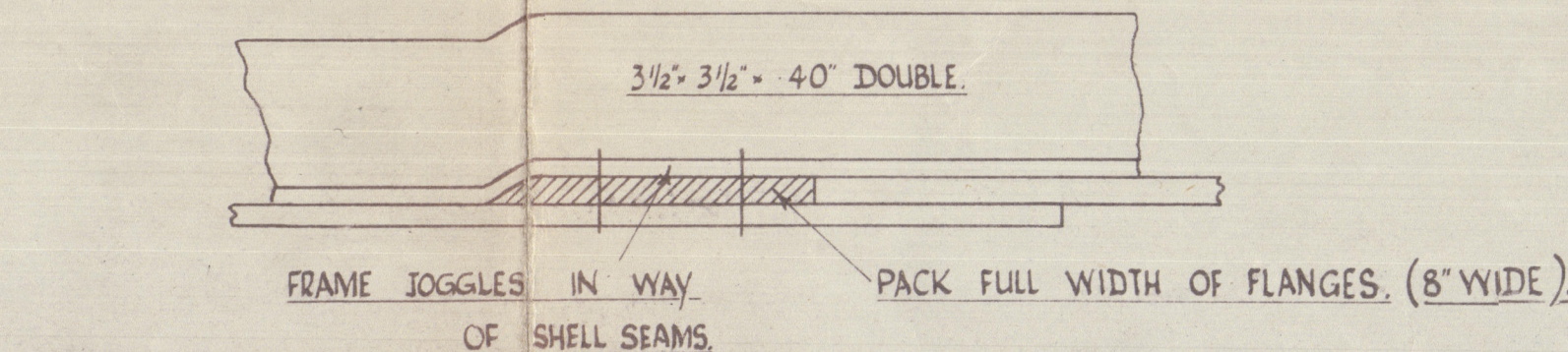
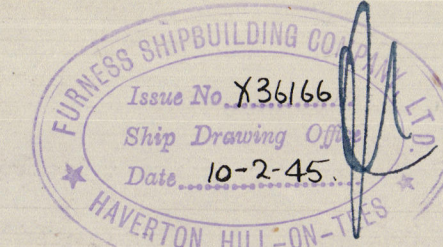
SECTIONS AT NOS 1, 2, 3, 4, 5, 7 & 8 LONG



SECTION SHOWING WEB ON C

BRACKETS TO
NOS 6, 9, & 10 STIFFERS

T. No 7243



FR
25.2.45

II



© 2020

Lloyd's Register
Foundation


35 FURNESS S.B.C. LTD

YARD No 390-19412

393-4.

MIDSHIP O.T. BULKH^d

23 - 2 - 45.

390 S.S. "British Admiral" 
MDB, RPT. No. 18205.

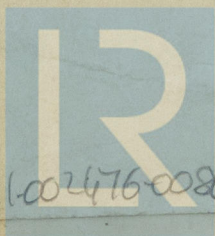
391. British Express. 1412 S.S. "British Yeoman"
MDB, RPT. No. 18696

393- "Ensign"

394 "Isles"

10

~~British Express 1412~~
~~MIDDLESBROUGH~~
~~REPORT No. 19438~~



© 2020

Lloyd's Register
Foundation

002471-002476-0086