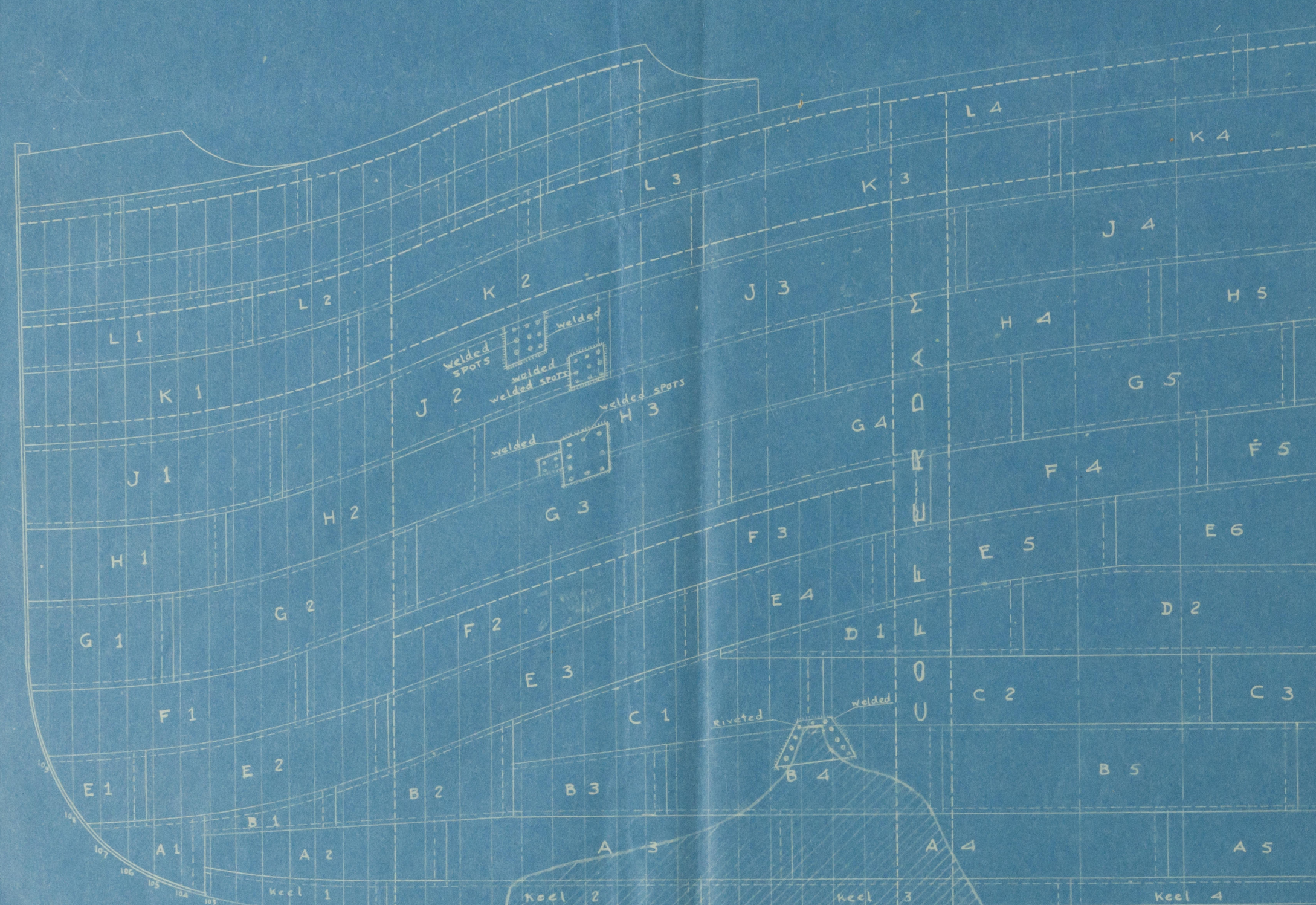


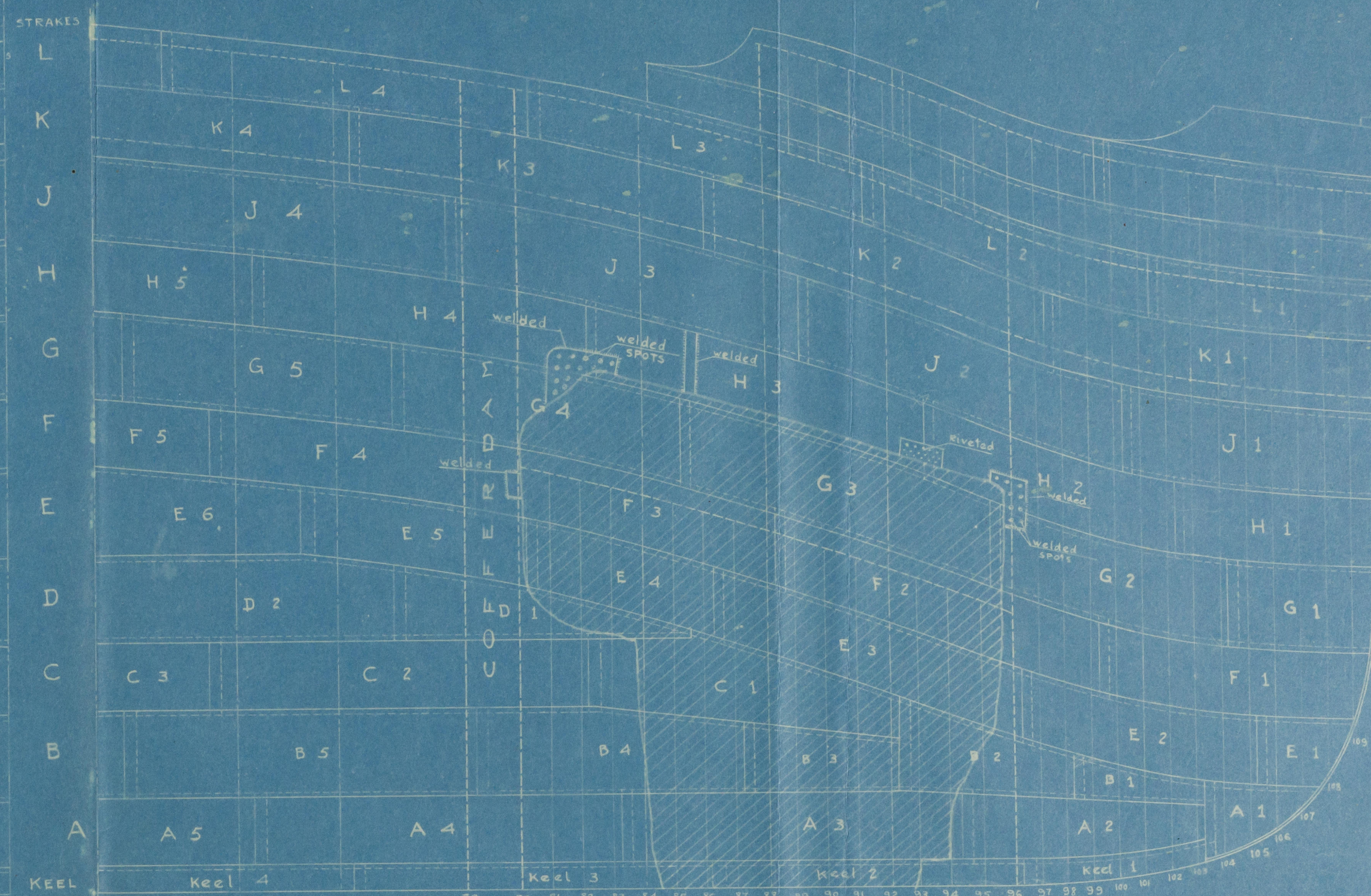
S.S. ANNA KNUDSEN

SKETCH SHOWING DAMAGE TO SHELL PLATING AND FRAMING

SCALE $\frac{1}{8}'' = 1$ FOOT



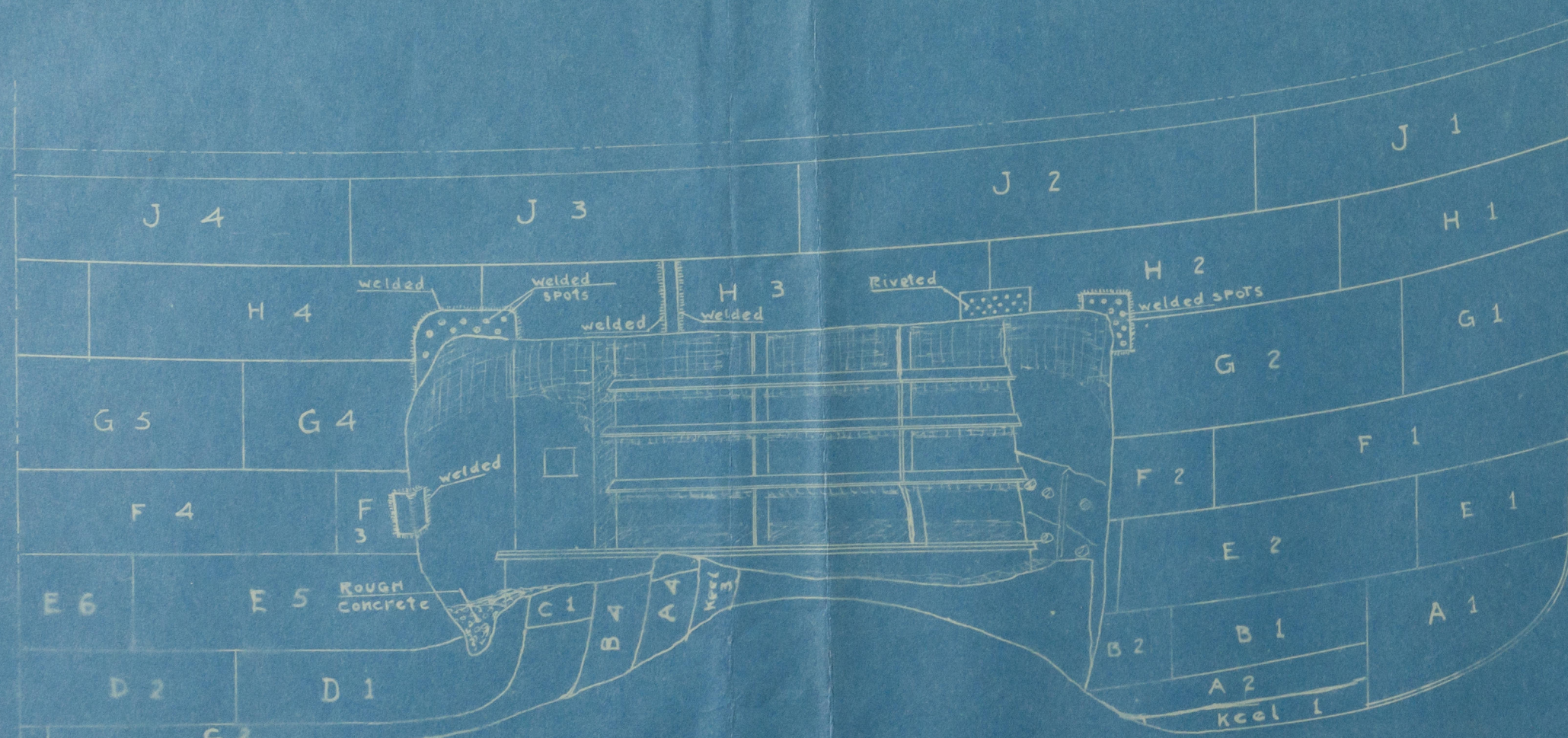
PORT SIDE



STARBOARD SIDE

TABLE OF DAMAGE SHELL PLATING

STRAKE	Nº	STARBOARD SIDE		PORT SIDE	
		1	2	1	2
Keel	1	Badly set up and after end	2	Part missing, forward end badly bent	
	3	Missing	4	Forward end of Plate bent upwards and Part Missing	
A	2	Badly set up at forward end		2	Badly buckled and set up at after end
	3	Missing		3	Part Missing
B	4	Bent upward at forward end		4	Forward end of Plate bent upwards
	1	Slightly distorted at after end		2	Badly buckled
C	2	Missing		3	Badly buckled and Part Missing
	4	Badly distorted and Part Missing at forward end		4	Forward Part of Plate Missing and remainder badly distorted
D	1	Missing		1	Set up 4 feet and pierced
	2	Forward end badly distorted and set up between floors			
E	1	Badly set up and Part Missing			
	2	Buckled and set up at forward end		3	Badly buckled and indented
F	3	After end badly set in and indented		4	Slightly buckled at lower edge
	4	Missing		2	Badly buckled and pierced
G	5	Forward end badly distorted at lap joint		3	Badly buckled and pierced
	2	After end of Plate Missing		2	Slightly distorted at lower after edge
H	3	Missing		3	Generally distorted
	4	Missing at forward end		4	Set in between frames
J	2	Badly torn at after end		3	Badly buckled and pierced
	3	Lower edge of Plate torn			
K	4	Lower edge of Plate torn at forward end		2	Badly pierced in 2 places
	3	Set in at lower edge of Plate at centre		3	Distorted slightly at upper edge of Plate
				2	Buckled and rivets sheared at after end



STARBOARD SIDE
SKETCH NOT TO SCALE

002476-0043

"
Anna Knudsen."
"

Sing rept No. 261.



© 2020

Lloyd's Register
Foundation

002471-002476-0043