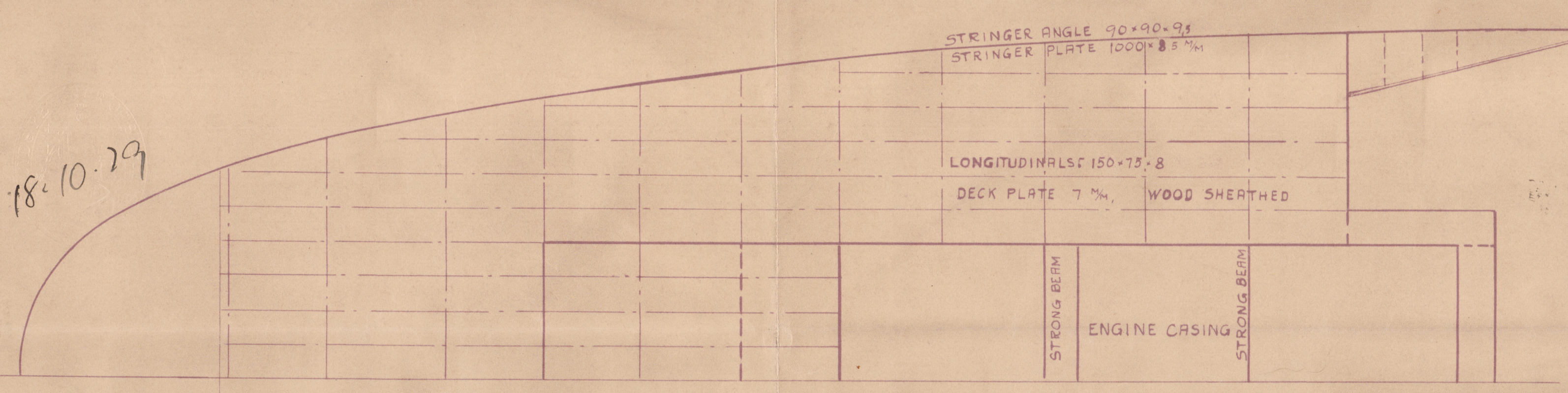
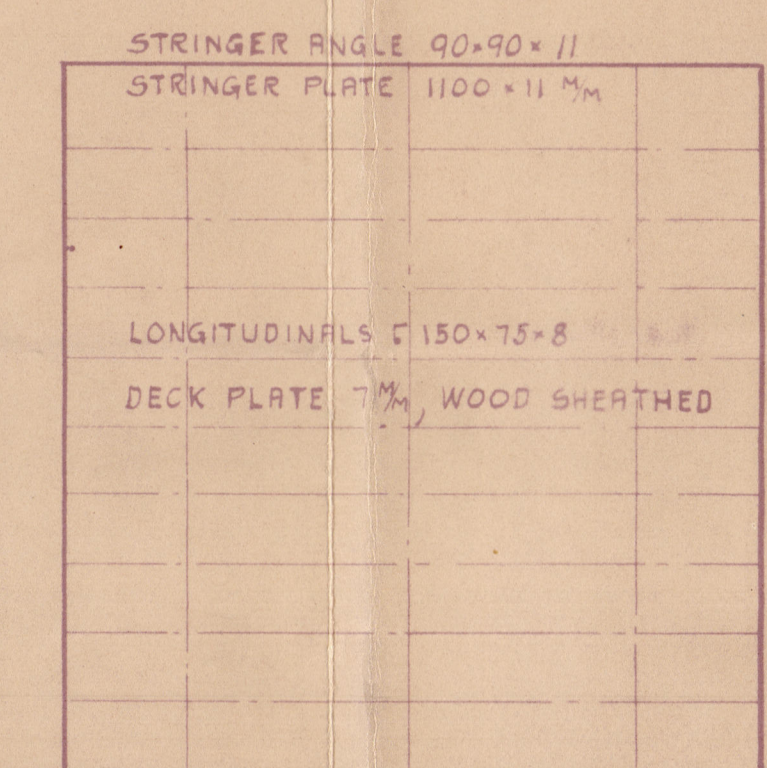


18.10.29

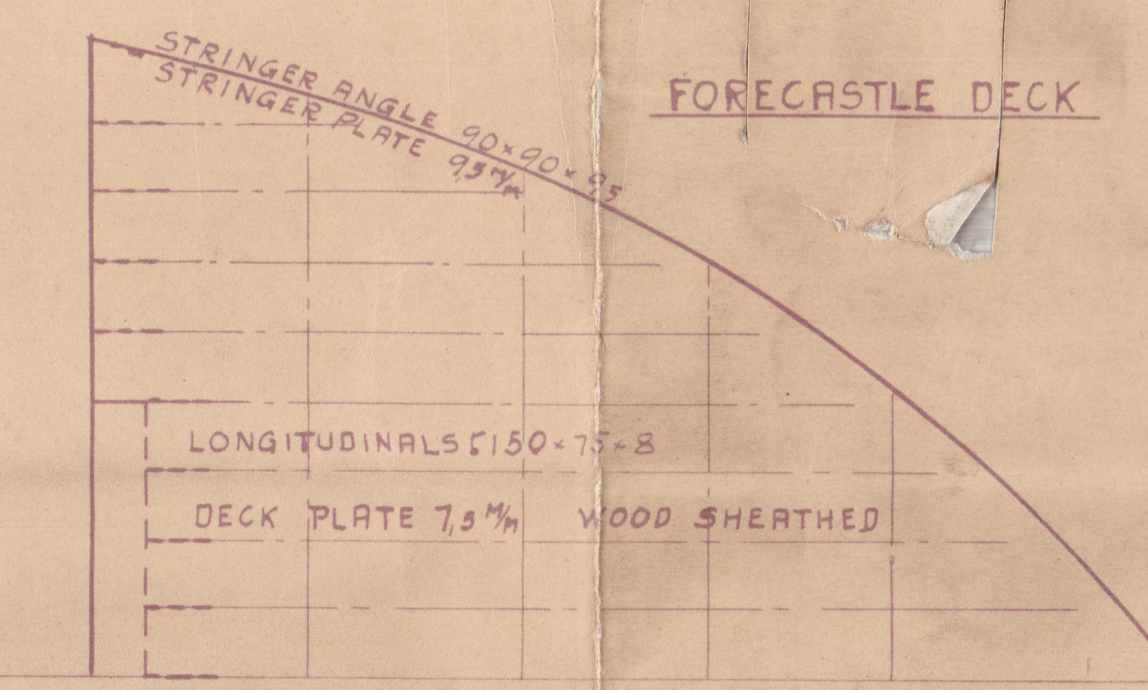


POOP DECK

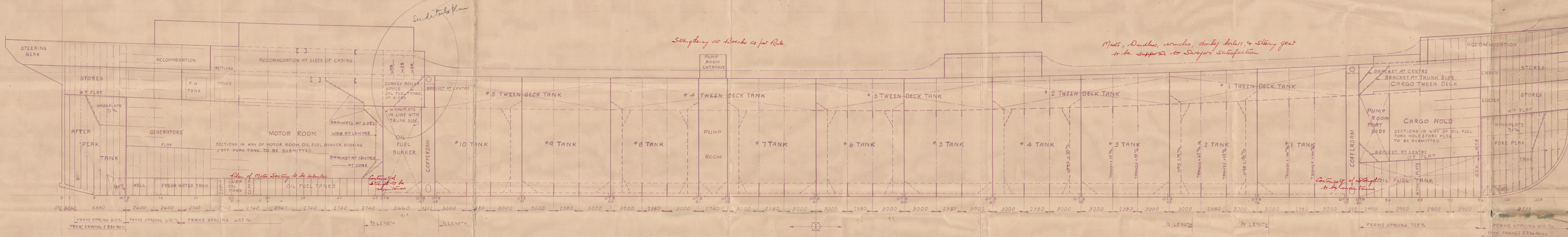


BRIDGE DECK

TRANSVERSE AT SHELL PLATING AND AT CENTRE LINE BULKHEAD AND WEBS AT TRANSVERSE BULKHEADS TO BE INCREASED DUE TO SHEAR AS SHOWN.



FORECASTLE DECK



Strengthening at Breaks as per Rule.

Masts, Dismast, masts, dandy bolls, & stony gear to be supported to Suroj's satisfaction.

Plan of Motor Section to be submitted.

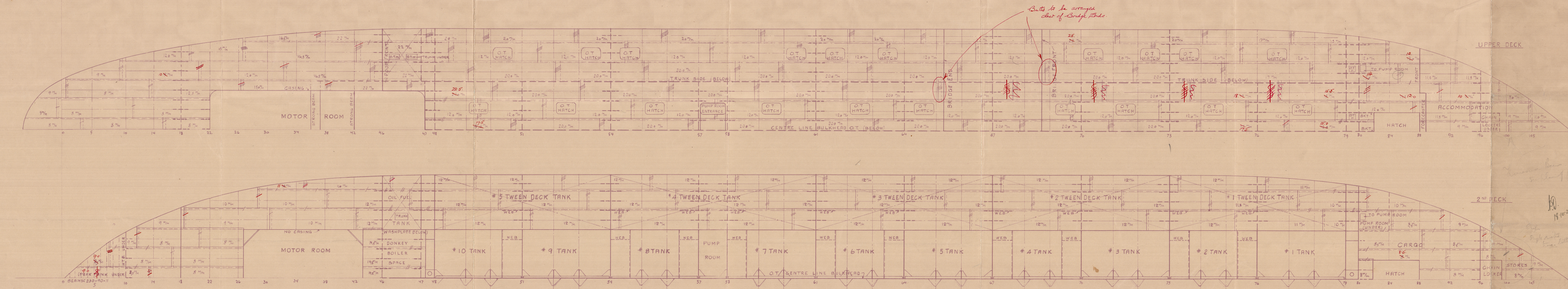
Continuity of Strength to be maintained.

Continuity of Strength to be maintained.

DIMENSIONS.

LENGTH (LOA)	470' 0" = 143.28 METRE
BREADTH MOULDED	64' 3" = 19.58
DEPTH	--- TO UPPER DECK 35' 4" = 10.77
	--- SEC. DECK 26' 10" = 8.11
LxD	= 16605 FEET = 1548 METR
Lx(B+D)	= 46803 --- = 434.8
L/D	= 133

† = SINGLE RIVETED END LAPS
‡ = DOUBLE
§ = TRIPLE
¶ = QUADRUPE



Bulbs to be arranged clear of Bridge/Bulbs

ALL BULB ANGLES NEW GERMAN STANDARD 1927.

J.S.

19/10/29
21/10/29

CLASS: Lloyd's + 100 A1.
CARRYING PETROLEUM IN BULK

AKTIEBOLAGET GÖTAVERKEN

FOR No. 442642

M/S 4426445.

LONGITUDINAL SECTION

AND PLANS

John Kuller

RITAD AV
KALKER AV
GRANSKAD

SKALA 1:100
DATUM 9.10.29

DATUM

00471-00016 0004

© 2020

Lloyd's Register

00471-00016 0004

© 1182