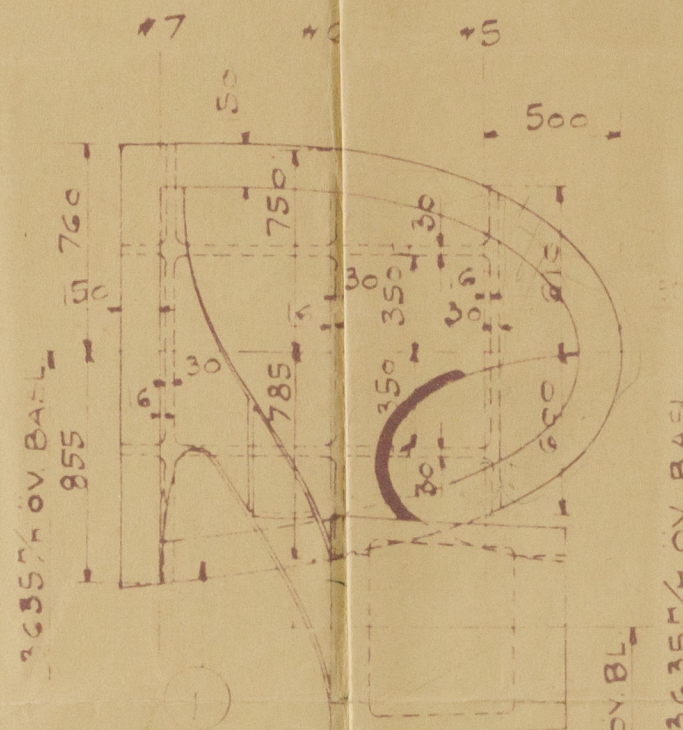
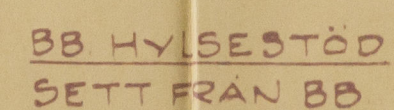


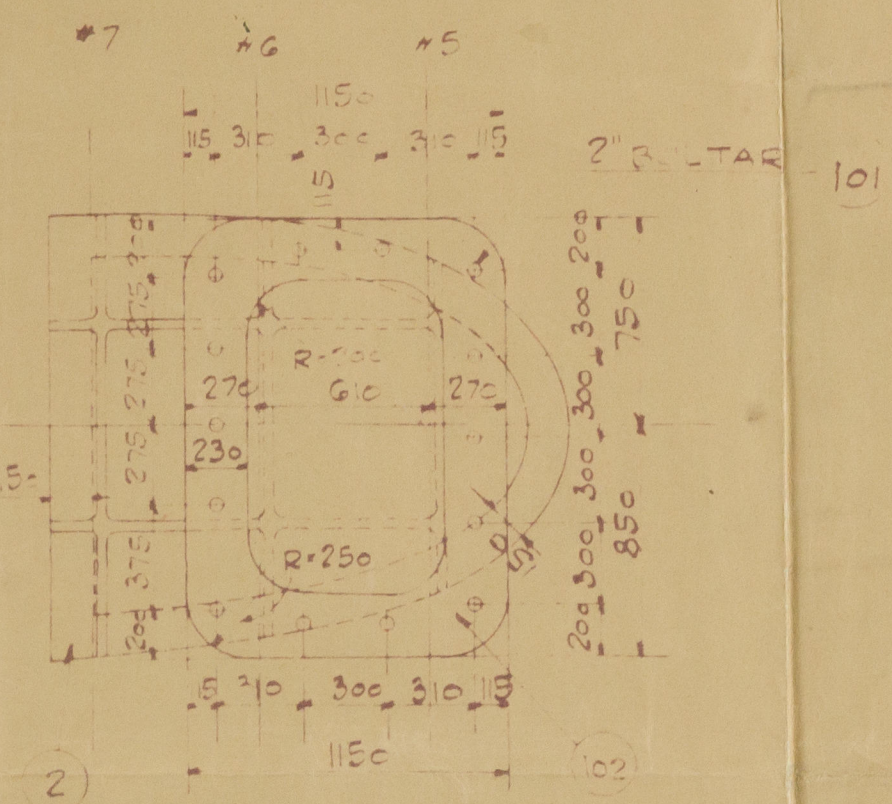
3-17-29



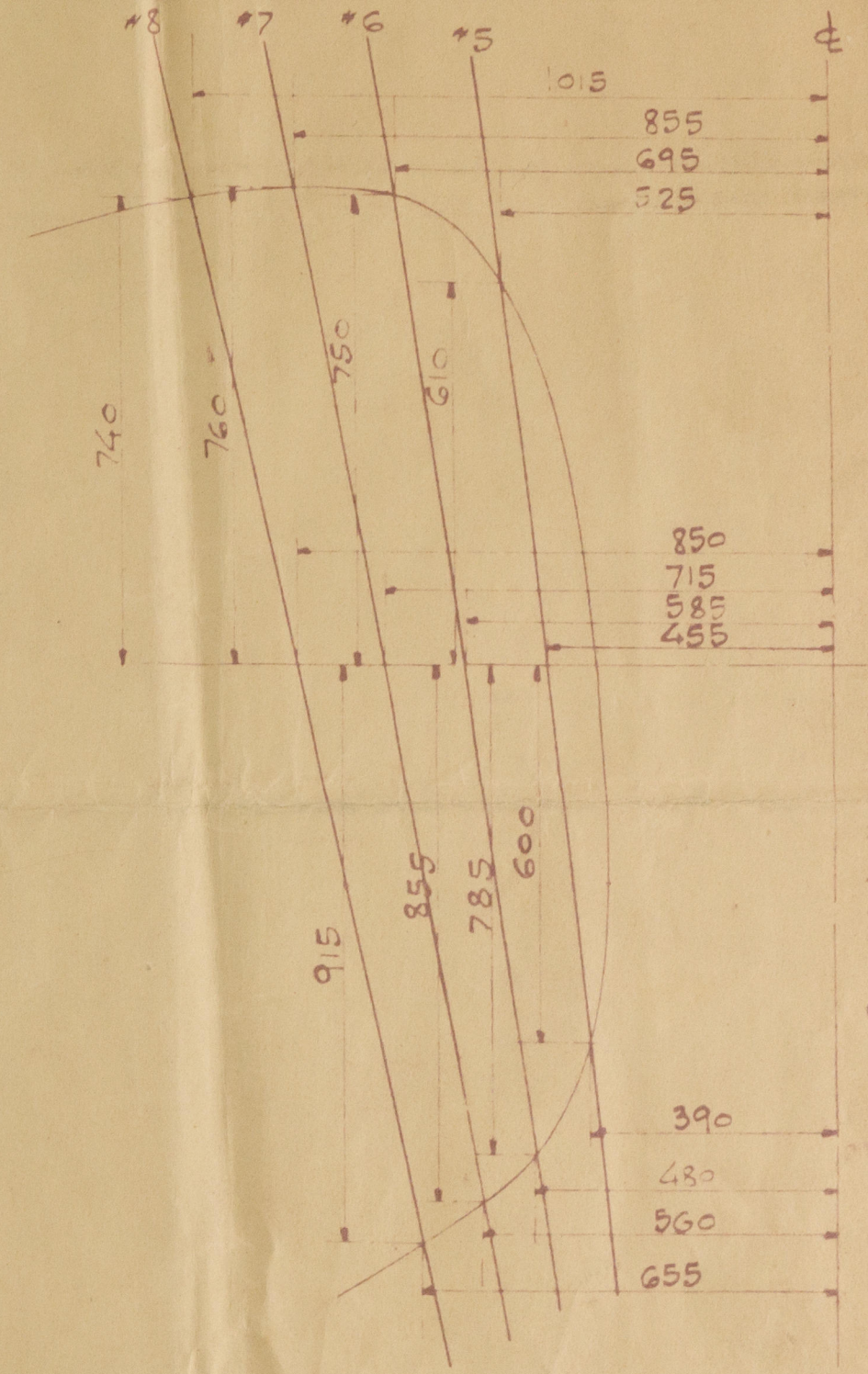
SB. HYLSESTÖD
SETT OVAN FR



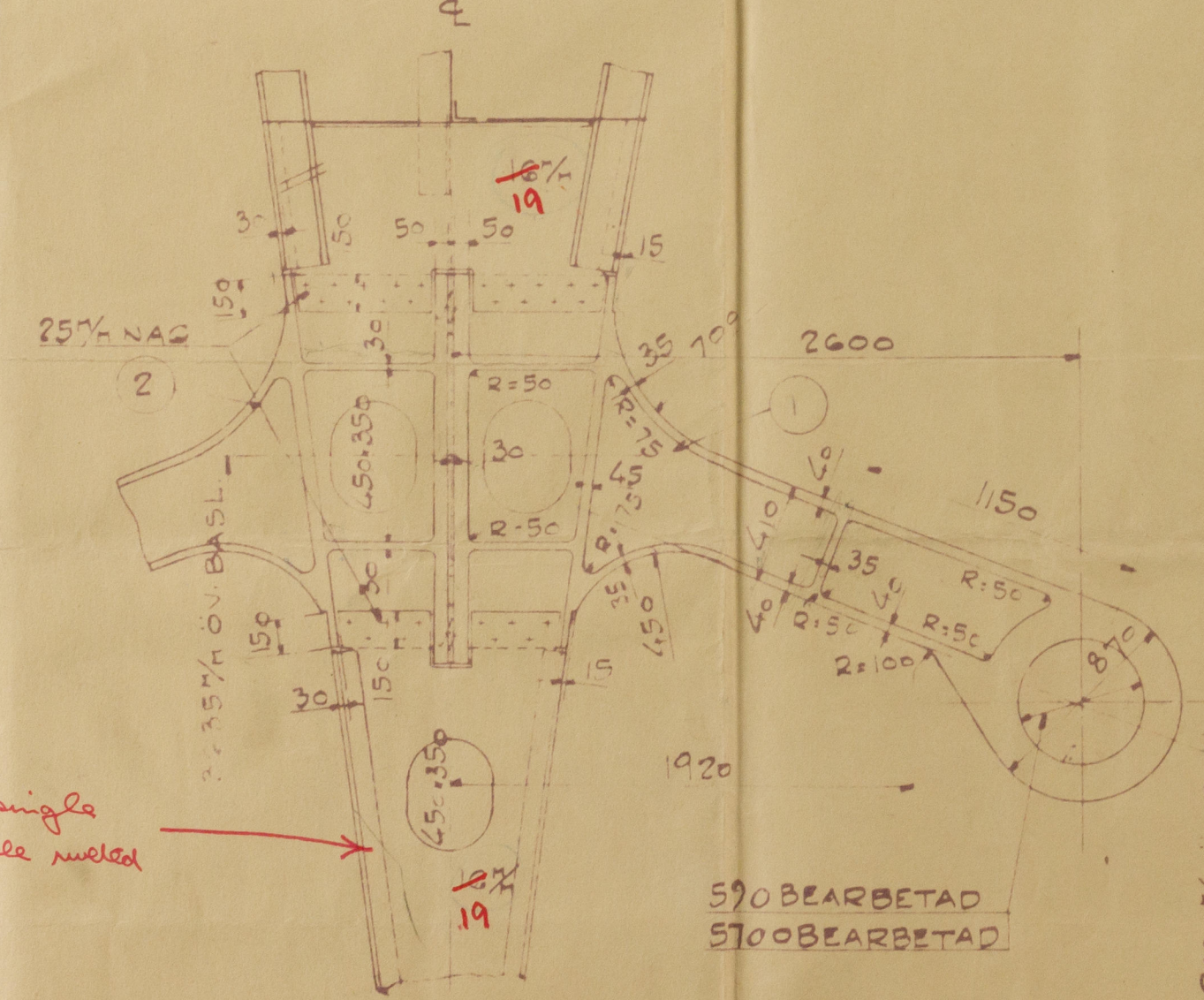
Shaft assumed $14\frac{1}{2}$ " diameter.



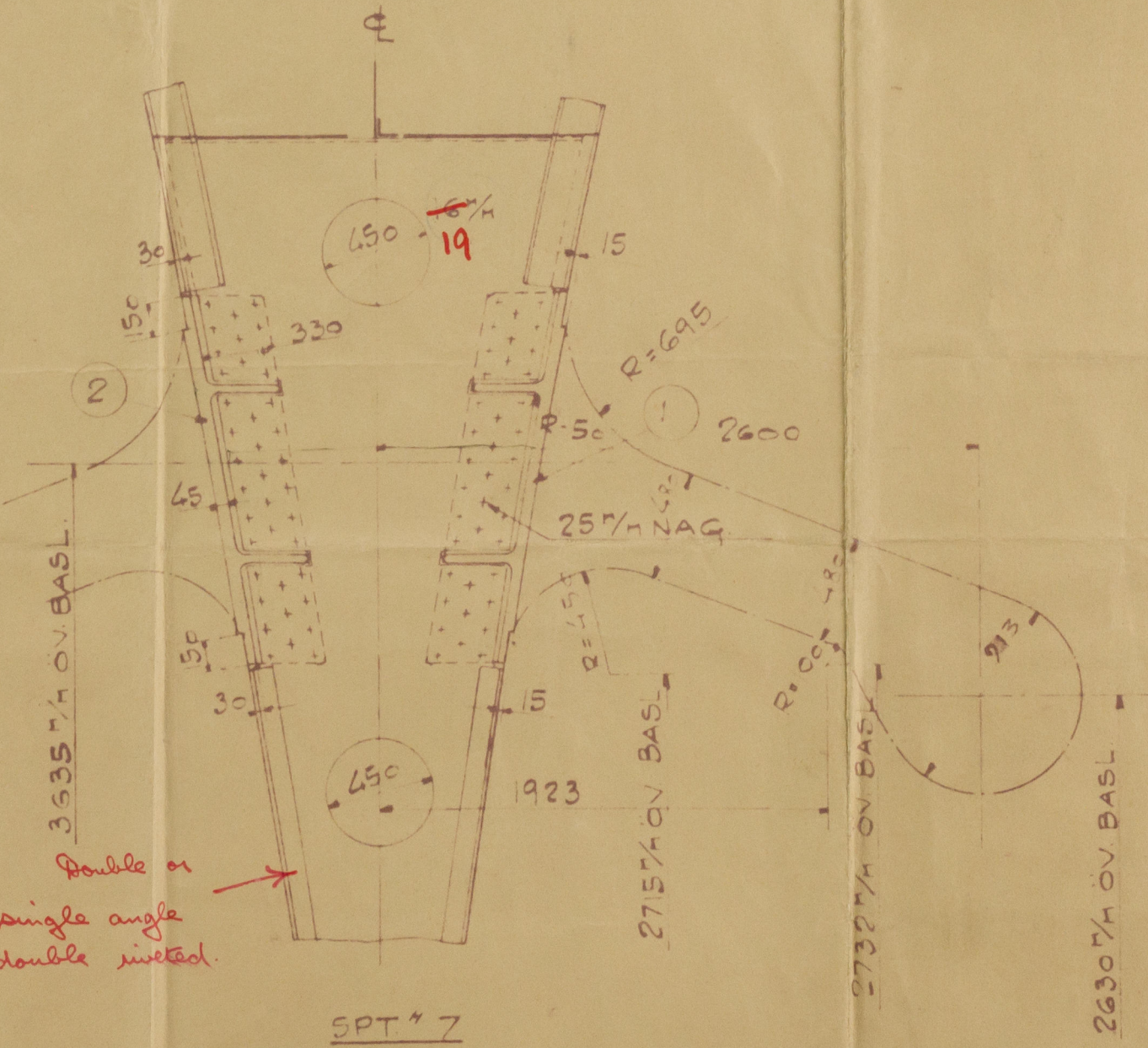
SB. HYLSESTÖD
SETT FRÅN C



ZINK
G SE SPEC SID 8



SPT * 6
SETT FÖRIFRAN



SPT. # 7
SETT FOR FRAM

MED / MARKTA YTOR BEARBETAS
MATERIALET MED ENG. LLOYDS
TEST Ö CERTIFIKAT

MÄRKE	NAMN	MATERIAL	MOD N ^o	VIKT	ANTA
1	HYLSESTÖD	BB	STÅL	GÖRS	1
2	"	SB	"	"	1
101	KOPPLINGSBULT	STÅL			14
102	JUSTERINGSPLOTTA	"			
201	FRÄTSTYCKE	ZINK			1

8.5.

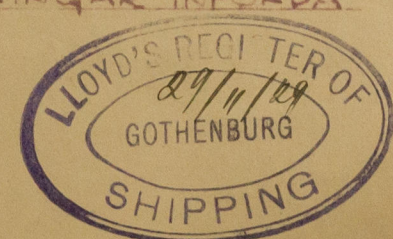
M/s 442/5
HYLSESTÖD.

H. G. Cortice
auditor
 1:25:11:10
 26.11.29
 BOSS CASTING 3

Anna Kneiden
John Kneiden

19.
3.12.29

LOYDS ÄNDRINGAR INFÖRDA



© 2020 Lloyd's Register Foundation

Anna Kowalska

Abraham

Lloyd

John

181-142

