





Do all the Frames extend to the top height in the Poop? *Yes as per plan* Raised Quarter Deck? *✓* Bridge House? *As per plan* Forecastle? *As per plan*

To what height do the Reverse Frames extend? *bulb angle frames*

Has the Poop or Raised Quarter Deck an efficient Iron Bulkhead at the fore end? *Yes*

Give particulars of the means for closing the openings in Bulkhead *no openings*

Is the Poop or Raised Quarter Deck connected with the Bridge House? *no* Has the Bridge House an efficient Bulkhead at the fore end? *Yes*

Give particulars of the means for closing the openings in Bulkhead *Steel doors in hinges*

What is the thickness of the Bridge Front plating? *.42* and Coaming plate? *.46*

Give scantlings and spacing of the Stiffeners *C 10" x 3 1/2" x .40"* *30" apart*

Are bracket plates fitted at each end of the Stiffeners? *Yes* Are hor'l. brackets fitted connecting Bridge Bulk'd. with Bulwarks? *Yes*

Has the Bridge House an efficient Iron Bulkhead at the after end? *Yes*

How are the openings closed? *portable plates fastened with hook bolts*

Is the Forecastle at least as high as the main or top-gallant rail? *Yes* Has the Forecastle an efficient Iron or Wood Bulk'd. at after end? *no*

Are the Engine and Boiler openings covered by a Bridge, Poop, Raised Quarter Deck, or enclosed by a Strong Iron or Steel Deckhouse? *Covered by poop and in top deck house*

If the openings are not so protected are the exposed parts of the Casings efficiently constructed? *Yes*

Give thickness of plating; scantlings and spacing of Stiffeners *Coaming .40" plating .28" stiffeners L 4 1/4" x 3 1/4" x .40"*

What is the height of the exposed Casings? *✓* Are suitable means provided for closing all openings in them in bad weather? *Yes steel doors*

Are the Weather Deck Hatchways efficiently constructed and at least equal to the requirements of Section 28 of the Rules for 1904-5? Give particulars below:— *Right hand hatches with steel covers*

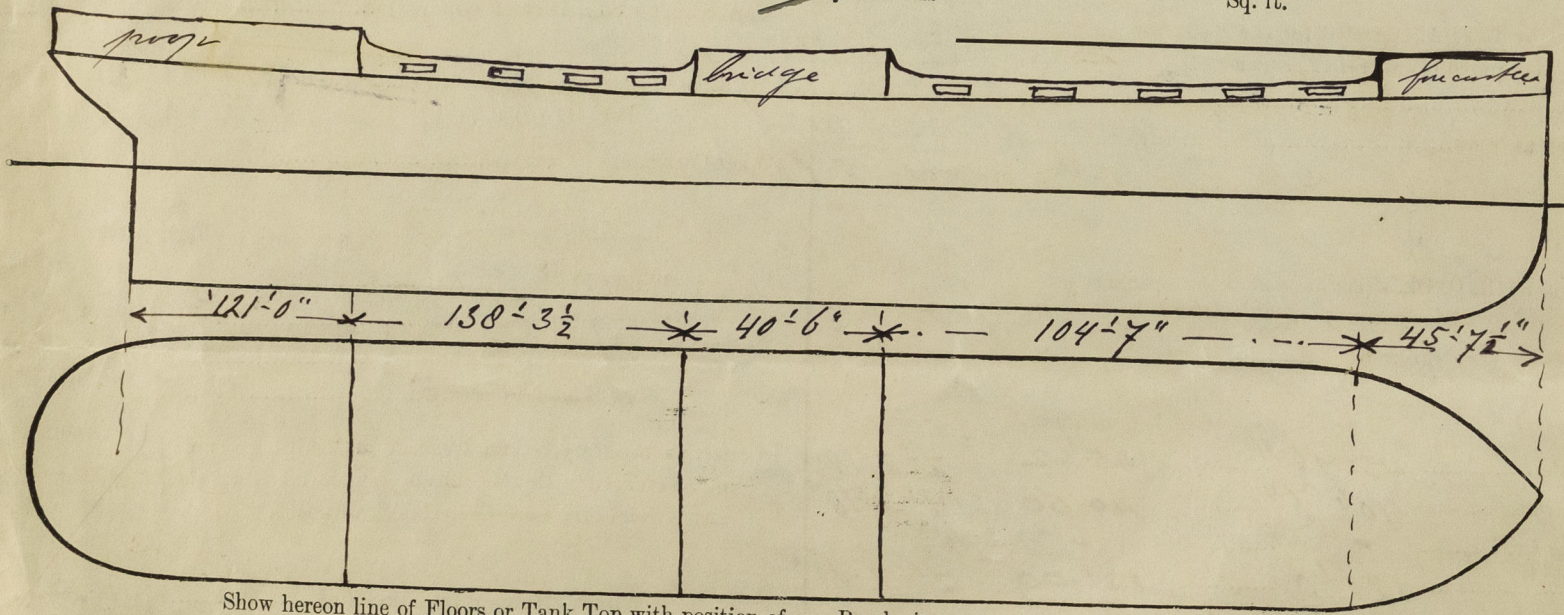
Position and Size.		Ship.		Rule.		Ship.		Rule.		Ship.		Rule.		Ship.		Rule.	
COAMING	Height above top of DECK																
	Thickness { Sides.....																
	{ Ends.....																
SHIFTING BEAMS OR WEB PLATES	Number .....																
	Section and Scantlings .....																
	Material .....																
* FORE AND AFTERS	Number .....																
	Section and Scantlings .....																
	Material .....																
HATCHES Thickness .....																	
Remarks.....																	

\* The depth of Fore and Afters should be stated from the underside of the hatches in all cases.  
 (If the sill of the lowest side scuttle will be less than 6 inches above the Indian Summer Load Line if assigned under the tables, state vertical distance from top of deck at side amidships to lower edge of lowest side scuttle.)  
*In forewell 4 scuttles* *In well aft 5 scuttles*  
 The following information is to be given in all Cases of vessels dealt with under Paras. 11, 12 (under 15 feet Moulded depth) and under Shelter Deck Rules.  
 What is the thickness of the Bridge Sheerstrake? *✓* Strake between Main and Bridge Sheerstrakes? *✓*

Delete the words { The Crew are, ~~are not~~, berthed in the bridge house. *and poop*  
 that do not apply { The arrangements to enable them to get backwards and forwards from their quarters are, ~~are not~~ satisfactory.  
 Length of Bulwarks in well *104.58' Forward = 21'*  
*188.29' aft = 27'*  
 Area of Freeing Ports required by Para. 11 (e) each side of vessel =  

Ft.	Tenths.	Ft.	Tenths.	No.		Sq. ft.
<i>forewell</i>	<i>3, 0</i>	<i>x 2, 0</i>	<i>x 5</i>		Freeing Ports (each side of vessel) =	<i>30.0</i>
<i>Well aft</i>	<i>3.0</i>	<i>x 2, 0</i>	<i>x 7</i>			
						<i>42.0</i>

 Total deficiency or excess = *Forewells only.* Sq. ft.



Show hereon line of Floors or Tank Top with position of any Breaks in same; also height of Peak Tank tops, &c., &c.

State any special features in the construction of the Vessel *Outrigger (longitudinals bottom and deck)*

Builder's name and yard number *Jana N° 115* Approvals are retained in full

Names of sister vessels *Burgerhout's Machinefabriek & Scheepswerf.*

Owners *S. A. d' Amement d' Industrie & de Commerce.*

Address *Antwerp.*

Fee *168.00* Received by me *Application form will be sent after*

