

Office Copy

Burgerhout 115  
MIDSHIP SECTION.  
MOTOR OIL TANKER.

450'-0" B.P. x 61'-0" MLD. x 34'-6" MLD.

SCALE 1/2" = 1 FOOT.

Class - 100A1 Carrying Petroleum in Bulk.  
Special notation - Longitudinal framing at bottom and at deck.  
Equipment to bulk.

CURCHIN & WATSON,  
59 MARK LANE  
LONDON, E.C.3.

LLOYD'S NUMERALS

D = 34.5

L x D = 15,525

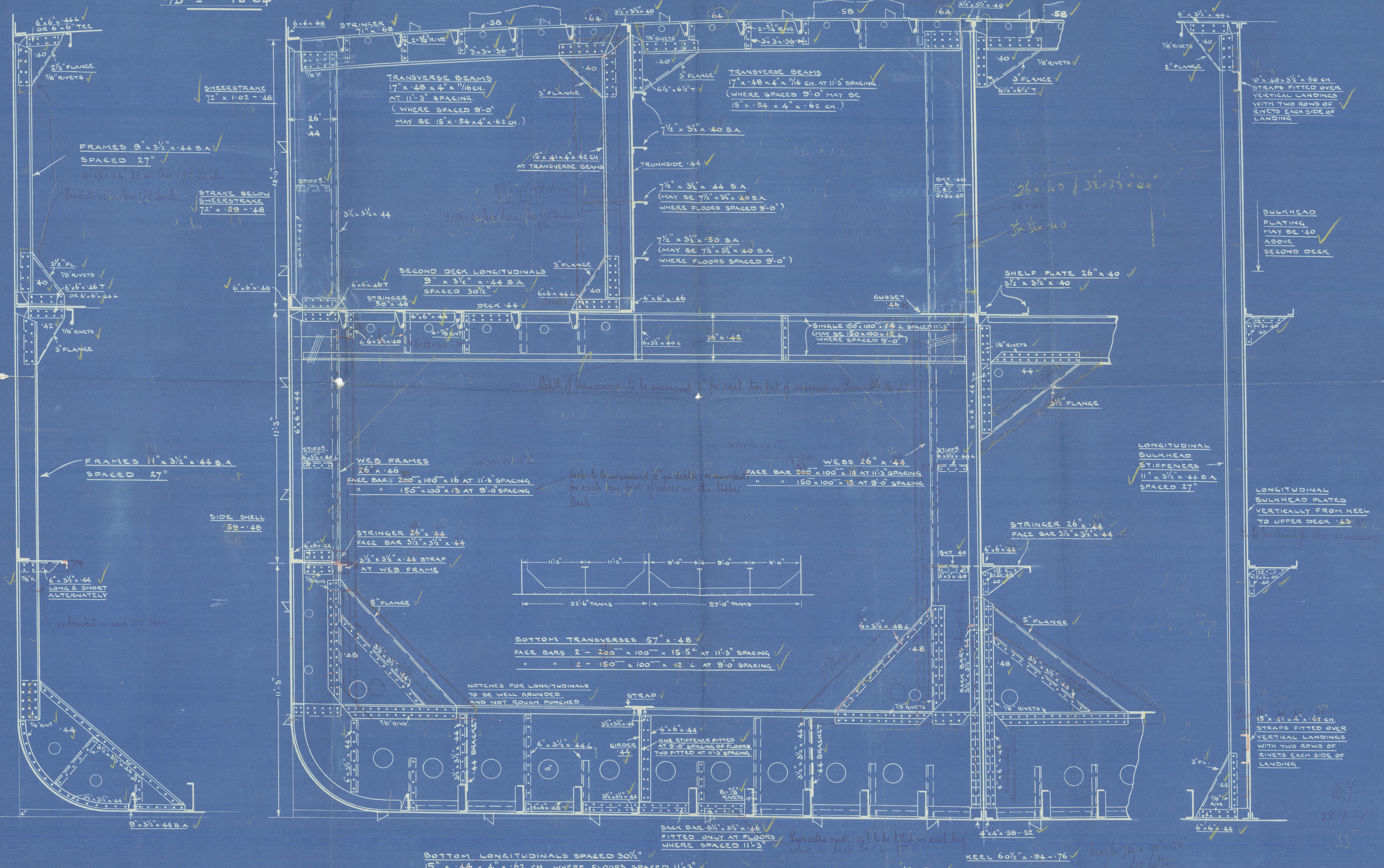
L(B+D) = 42,975

L/D = 13.04

FOR DECK PLATING  
SEE ALSO DECK PLAN

UPPER DECK LONGITUDINALS  
7/2" x 3/2" x 40 B.A. SPACED 30 1/2"

CURCHIN & WATSON  
1, BELTING LANE  
LONDON, E.C.3  
20/1/27



BOTTOM LONGITUDINALS SPACED 30 1/2"  
15" x 44 x 4" x 62 CH. WHERE FLOORS SPACED 11'-3"  
(MAY BE 15" x 41 x 4" x 62 CH. WHERE FLOORS SPACED 9'-0")

MIDSHIP THICKNESS OF BOTTOM SHELL  
TO BE MAINTAINED ON FLAT OF BOTTOM  
FOR. OF 3/8 L. TO COLLISION END.

KEEL 60 1/2" x 94 - 76

Bottom and side plating clear of bilge keels  
to be considered with plan of side framing  
to be submitted



Belgian gulf

Midship section

~~GEN. BOX NO~~

~~246~~



© 2020

Lloyd's Register  
Foundation

002457-002464-0174