

Office Copy

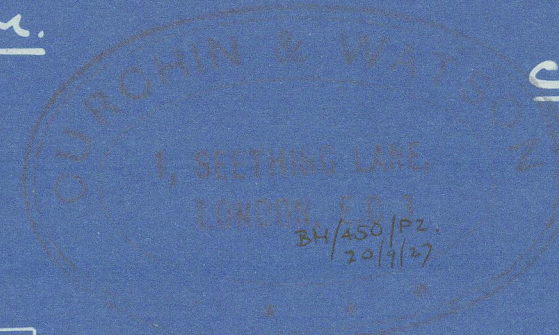
26  
20

# Burgerhout 115 PROFILE & DECK PLANS.

MOTOR OIL TANKER 450' B.P. x 61'-0" M. x 34'-6" M.

BURGERHOUT'S MS. & SCH. No. 115.

SCALE 1/6" = 1 FOOT.



CURCHIN & WATSON,  
59 MARK LANE,  
LONDON. E.C.3.

Sheets 5-

- A. 3'-6"
- B. 2'-9"
- C. 1'-9"
- D. 1'-3"
- E. 1'-0"

SCANTLING AND ARRANGEMENTS IN  
MACHINERY SPACE AND CROSS BUNKERS  
TO BE SUBMITTED FOR APPROVAL

strengthening at breaks as per Rule

BULWARK PLATING AT BRIDGE ENDS  
& POOP FRONT 5' CARRIED DOWN TO DECK

guide?

Plan of Motor Seating to be submitted

PLAN TO BE SUBMITTED

TRANSVERSE FRAMING IN BOTTOM

LONGITUDINAL FRAMING IN BOTTOM

LONGITUDINAL FRAMING IN BOTTOM

TRANSVERSE FRAMING IN BOTTOM

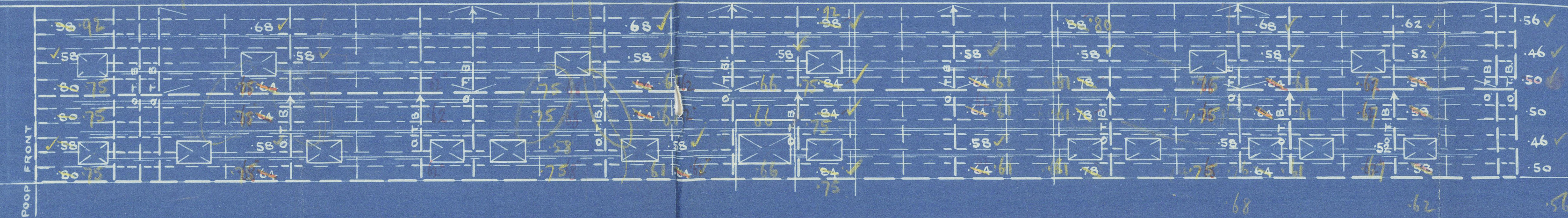
SHEERSTRAKE AT  
POOP FRONT 1'22

CORNERS OF HATCHWAYS  
TO BE WELL ROUNDED

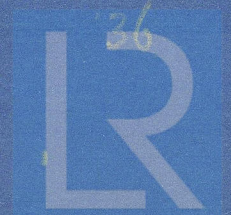
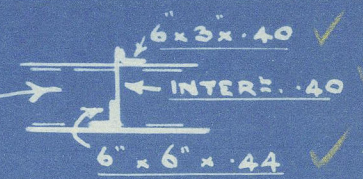
SHEERSTRAKE AT  
BRIDGE ENDS 1'22

LONGITUDINAL FRAMING  
IN UPPER DECK

TRANSVERSE FRAMING  
IN UPPER DECK



INTERCOSTALS TO BE FITTED BETWEEN THE  
LONGITUDINALS FOR 2/5 L.  
BACK BARS 3 1/2" x 3 1/2" x .44 TO BE FITTED TO  
BOTTOM LONGITUDINALS & SHELL IN NO. 1 TANK.



© 2020 Lloyd's Register  
Foundation

001457-001461-0172

Belgian gulf

Profile Decks

~~GEN. BOX NO 241~~

002457-002464-0172



© 2020

Lloyd's Register  
Foundation

002457-002464-0172