

# Lloyd's Register of Shipping.

## SURVEYS FOR FREEBOARD.

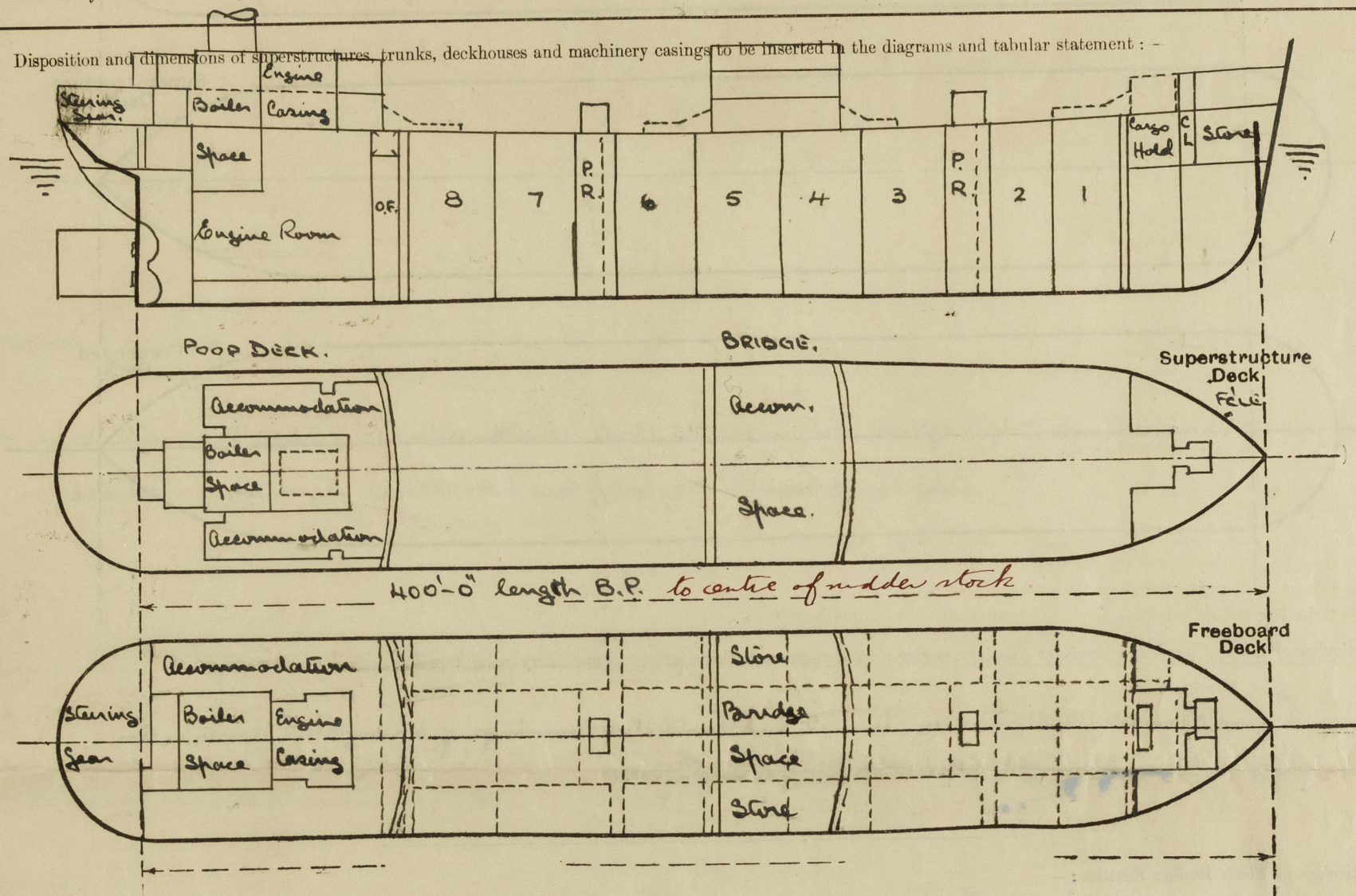
(CONDITIONS OF ASSIGNMENT.)

N<sup>o</sup> 34556

22 NOV 1946

Ship's Name "BRITISH ENTERPRISE" Port of Survey SUNDERLAND.  
 Official Number 181519 Surveyor's Signature Moel F.H. Duncan  
 Nationality and Port of Registry BRITISH : LONDON. Date of Survey DURING CONSTRUCTION.

Disposition and dimensions of superstructures, trunks, deckhouses and machinery casings to be inserted in the diagrams and tabular statement :-



Particulars of Superstructures, Trunks, Casings, Deckhouses.

	Coaming	Plating	Stiffeners	Spacing	End Attachments of Stiffeners	Size of Openings	Height of Sills	Height of Casings
Poop Bulkhead ... ..	44"	44"	4x3 1/2 x 44"	26 1/2" - 30"	LUGS T.O.B.	2@ 5'-0" x 3'-0"	18"	8'-0"
Raised Quarter Deck Bulkhead ...						2@ 4'-1 1/2" x 3'-1"	19"	8'-0"
Bridge, After Bulkhead ... ..	30"	30"	4x3 x 32 L	24" - 30"	✓	1@ 4'-3" x 2'-3"	18"	8'-0"
Bridge, Forward Bulkhead ... ..	44"	44"	8x3 x 42 L	24" - 32 1/2"	LUGS T.O.B.	1@ 5'-0" x 3'-0"	18"	8'-0"
Forecastle Bulkhead ... ..	30"	30"	4x3 x 36 L	24" - 30"	✓	2@ 4'-1 1/2" x 3'-1"	19"	8'-0"
Trunk, Aft ... ..						2@ 4'-3" x 2'-3"	18"	8'-0"
Trunk, Forward ... ..								
Exposed Machinery Casings on Freeboard or Raised Quarter Decks ...								
Exposed Machinery Casings on Superstructure Decks (BOILER) ...	30"	26"	3 1/2 x 3 x 50 L	30"	BKTS, TOP	2@ 4'-3" x 2'-3"	18"	8'-0"
Machinery Casings within Superstructures not fitted with Class I Closing Appliances ... ..								
Deckhouses on Flush Deck Ships ...								

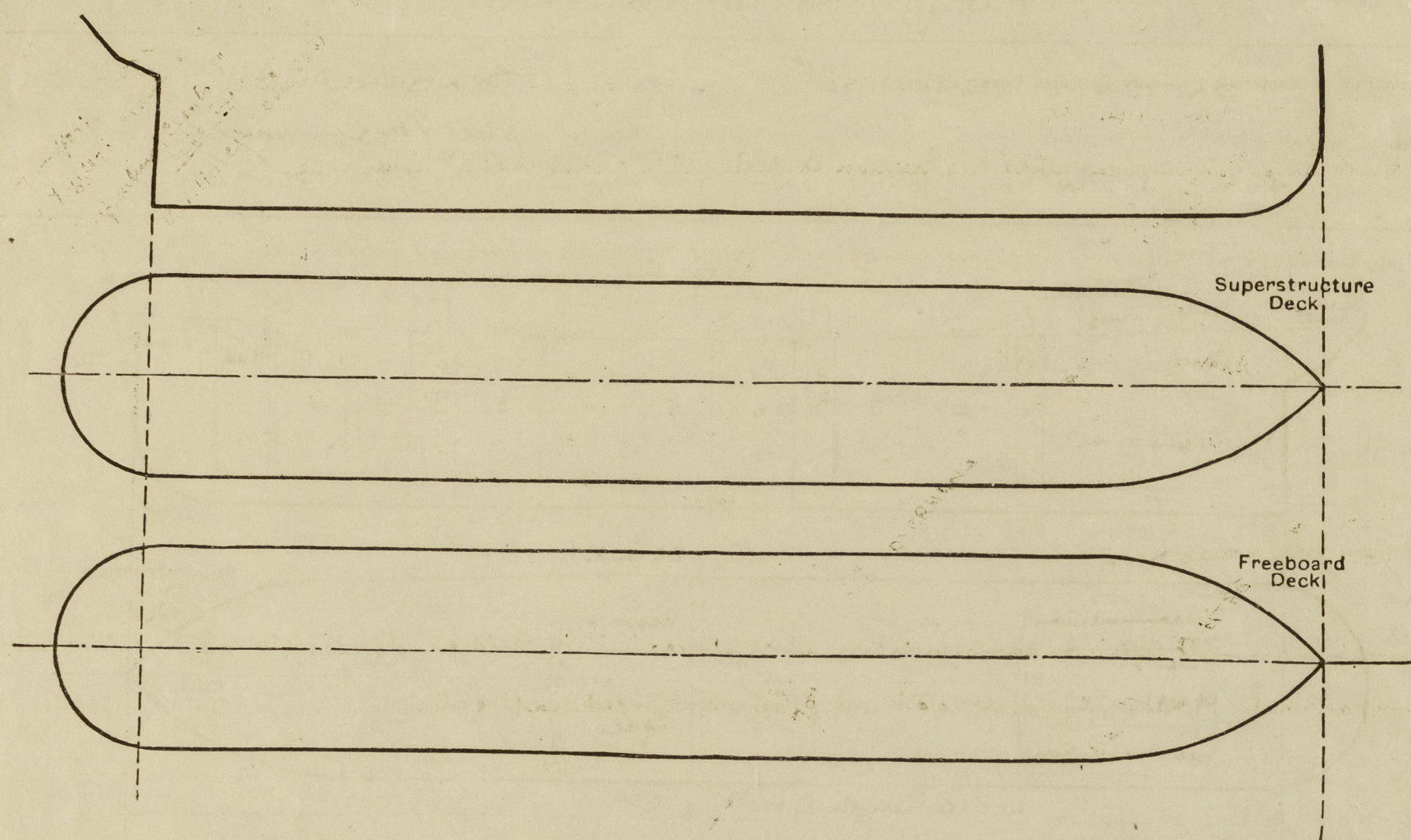
Particulars of Closing Appliances (state if capable of being manipulated from both sides).

Poop Bulkhead ... ..	Two Mechans W.T. Doors 5'-0" x 3'-0" with 18" Coamings.
Raised Quarter Deck Bulkhead ...	
Bridge, After Bulkhead ... ..	Two openings 4'-1 1/2" x 3'-1", 19" Coamings, 3" shifting boards in Channels; 1 Mechans W.T.D. 4'-3" x 2'-3" 18" Coaming.
Bridge, Forward Bulkhead ... ..	One Mechans W.T. Door 5'-0" x 3'-0" 18" Coamings.
Forecastle Bulkhead ... ..	2 openings 4'-1 1/2" x 3'-1", 19" Coaming 3" Shifting boards in Channels; 1 Mechans W.T.D. 4'-3" x 2'-3" - 18" Coaming
Exposed Machinery Casings on Freeboard or Raised Quarter Decks ...	to forward Pump Room: 1 Steel rubbered door 4'-3" x 2'-3" - 18" Coaming opening from both sides to Chain locker.
Exposed Machinery Casings on Superstructure Decks (BOILER) ...	Two Mechans W.T. Doors 4'-3" x 2'-3" with 18" Coamings.
Machinery Casings within Superstructures not fitted with Class I Closing Appliances ... ..	
Deckhouses on Flush Deck Ships ...	



# PARTICULARS OF PROTECTION TO OPENINGS, ETC.

The following diagrams should be used to indicate the positions of cargo and coaling hatchways, gangway, cargo and coaling ports, ventilators, companionways, etc., which would affect the seaworthiness of the ship:—



Particulars of fiddle, funnel and ventilator coamings, engine room skylight and other openings in machinery casing tops and their means of closing:—

Engine Room skylight, fiddle, funnel and ventilator coamings of strong steel construction.  
Engine Room skylight fitted with hinged steel covers.

Particulars of Flush Bunker Scuttles:—

None.

Particulars of Companionways:—

Pump Room entrance (2 off) Plating 30", Stiffeners 4" x 3" x 30" with 3" x 3" x 30" news bars fitted to fore hold, spaced 24" x 29" apart. Bolts T & B. at ends. Lugs T & B. at sides. Deck openings 6'0" x 5'0", Skylight 6'0" x 4'6" Hinged W.T. Door 4'3" x 2'3" Coamings 18". Pump Room entrance openings 4'3" x 2'3" Coamings 18" fitted with hinged steel W.T. Door.

Particulars of Ventilators in exposed positions on freeboard and superstructure decks:—

1-6" Coal Vent Coaming 30" x 30" To fore Peak Store.  
3-8" " " 30" x 30" To fore Peak Store.  
2-12" " " 30" x 30" To fore Peak Store.  
1-12" " " 30" x 30" To fore Peak Store.  
2-6" Coal Vent Coaming 30" x 30" To Steering Gear.  
2-6" " " 30" x 30" To Steering Gear.  
1-9" " " 30" x 30" To Steering Gear.  
In Forecastle Deck.  
In Poop Deck.

Coal Vents closed by means of wood plugs and canvas covers.

Particulars of Air Pipes in exposed positions on freeboard, raised quarter, or superstructure decks:—

All Air Pipes of a Patent type and in accordance with approved plan.  
Automatic Vent pipes for Oil Fuel and W.B. Jukes. 3.1.46.

Particulars of Gangway Cargo and Coaling Ports:—

None.

"British Enterprise"

Particulars of Scuppers and Sanitary Discharge Pipes:—

Discharges from spaces above the freeboard deck led to N.R. valves at ship's side.

Particulars of Side Scuttles:—

10" and 12" diam side lights to accommodation, store spaces in Poop, Bridge and Forecastle and to Steering Gear compartment. Strongly constructed and fitted with hinged deadlights.

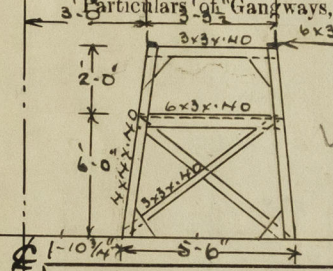
Vertical distance of Sill of lowest Side Scuttle above top of keel

36'-0"

Particulars of Guard Rails:—

Open rails fore and aft. 3'-6" in height. Steel bulwarks amidships forward of Bridge 25'-0" with one freeing port Port and Starboard, 9'-0" x 9". Aft of Bridge 23'-6" with one freeing port Port and Starboard, 13'-6" x 9".

Particulars of Gangways, Lifelines, etc.:—



Fore and Aft Gangway 8'-0" in height from Poop to Bridge, and from Bridge to fore. 5' x 3" length pine fore and aft. Stringer angle 6' x 3" x 40". Gangway supports 12' x 4" spaced approx 8'-4" and 8'-0" apart. Fore and Aft bracing 2' x 4" and 1' x 4". Hand rails 3'-6" high with stanchions spaced 4'-6" apart. Gangway supports welded to deck. Hand rails composed of 2 rails (145) spaced 1'-4" apart supported by stanchions.

Particulars of Freeing Arrangements.

	Length of Bulwark	Height of Bulwark	Size of Freeing Ports	Number each side	Area each side	Rule area each side
After Well ...						
Forward Well ...						

State position of each freeing port ... (After Well:—

(F. and A. position and height above deck edge) (Forward Well:—

State whether the freeing ports are fitted with shutters, bars, or rails, and give particulars of such:—

Additional area where sheer is less than standard.



## PARTICULARS OF PROTECTION TO OPENINGS, ETC.

HATCHWAYS ON FREEBOARD AND SUPERSTRUCTURE DECKS.									
Description of Hatchway			<u>Main Cargo tank hatches on upper Deck.</u>						
Dimensions of Hatchway			6'-0" x 4'-0" with Coamings 12" x 50" plate welded to deck						
COAMINGS	{	Height above Deck	Steel covers .64" with 16 toggles per cover.						
		Thickness { Sides							
		{ Ends							
		Stiffeners							
		Brackets, Stays	<u>Cargo hatch forward.</u>						
HATCH BEAMS			10'-0" x 6'-9" with Coamings 30" x 44 plate 3 1/2 x 3 1/2 x 44 angle to deck						
{	Number	with 50 steel covers 17 toggles per cover.							
	Spacing	<u>Cofferdam aft.</u>							
	Scantling and Sketch	3 W.T. Manholes 24" x 19" Coamings 12" x 50" welded to deck.							
	Bearing Surface	Top plate bolted 50"							
{	Number	<u>Cofferdam forward.</u>							
	Spacing	3 W.T. Manholes 24" x 19" Coamings 12" x 50" welded to deck.							
	Unsupported Lengths	top plates bolted 50"							
	Scantling* and Sketch	<u>Oil Fuel Cross bunkers</u> 2 @ 3'-0" x 3'-0" Coamings 2'-6" x 4'-0" welded to deck							
FORE AND AFTERS		Steel covers 50" 7 toggles.							
	Bearing Surface	<u>Fore Lween Decks</u> Hatch 3'-0" x 3'-0" Coaming 9" x 4'-0" welded to deck Steel covers 50"							
HATCH COVERS	{	Material	7 Toggles; <u>Pump Deck</u> Hatch to Store aft 2'-6" x 2'-6" Coaming 2'-6" x 30", 3 x 3 x 30" angle to deck Steel covers 50"						
		Thickness	6 Toggles; Hatch to Refrig space 2'-4" x 2'-4" Coaming 2'-7 1/2" x 30" with 2 1/2" wood covers 3" bearing surface						
		How fitted	2 Taraulins, Cleats 18" apart;						
		Bearing Surface	<u>Fore Deck</u>						
Spacing of Cleats			Q.T. Hatch 20 3/4" x 26 3/4" Coaming 12" x 3/8" Steel covers 50" with 3 Toggles.						
Number of Taraulins									

\*Are wood fore and afters steel shod at all bearing surfaces?   ✓

Are battens and wedges efficient and in good condition?   ✓

Are taraulins in good condition and in accordance with rule requirements?   ✓

Are lashings provided in accordance with rule requirements?   ✓

Particulars of any special features:—

Endorsement at first survey and at surveys for renewal of Certificate :—

The fittings and appliances are in accordance with the particulars shown on this form (or as now modified) and are in good condition.

