

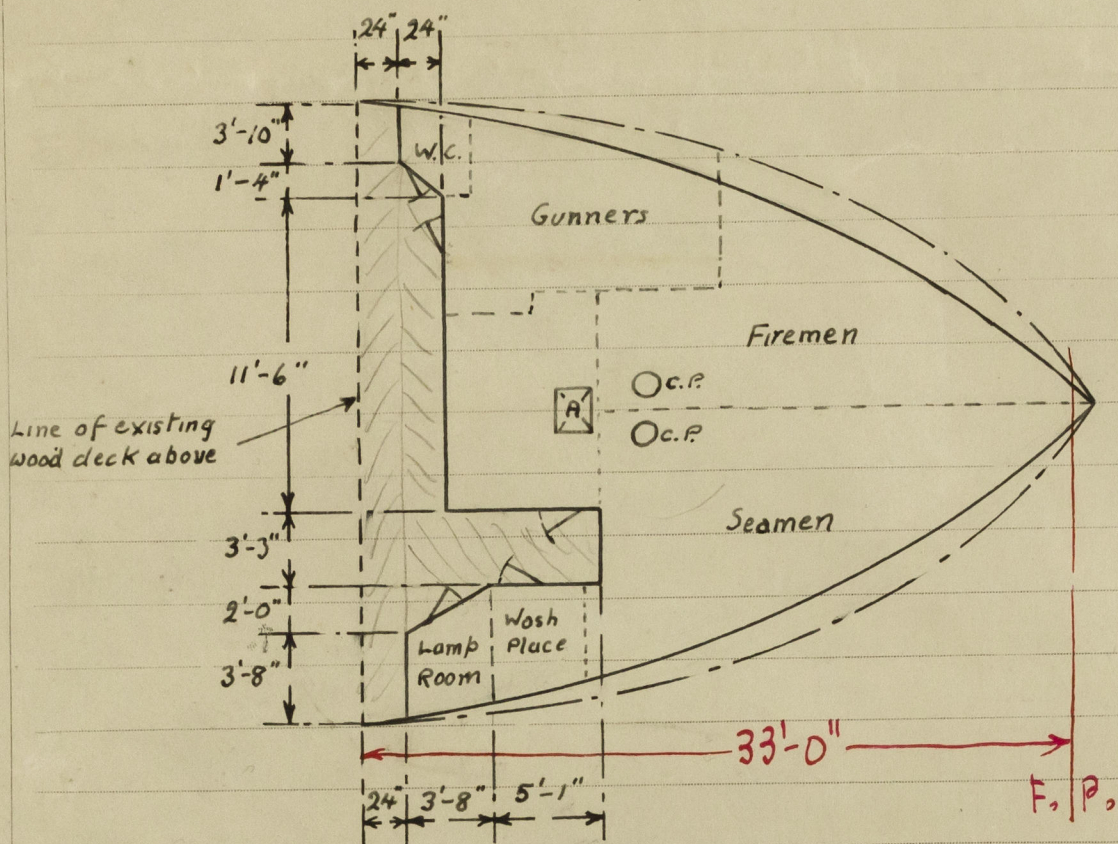
Lloyd's Register of Shipping.

Ship's Name *Clandeboyne*

Official No. 132036

Memorandum of alterations reported since ship was surveyed for assignment of Load Lines in November & December 1941

Alteration of crew's accommodation from lower forecastle space to existing open forecastle



The existing companionway and hatch to fore peak space dispensed with & openings in upper deck plated over.

Steel bulkhead erected across existing open forecastle (see above sketch), coaming & plating .25", stiffeners 2 1/2" x 2 1/2" x .26" spaced 30" apart, openings, 3 at 5'-0" x 1'-9" closed by steel doors operated from both sides, 2 at 5'-0" x 2'-0" closed by solid wood doors 1 1/2" thick operated from both sides. Height of sills 18", height of casing 7'-0"

Four of the existing sidelights in the lower forecastle space dispensed with & openings in shell permanently closed with riveted steel plates. Three additional sidelights with hinged deadlights fitted in forecastle, port side & two, Starboard side.

Two additional 6" ventilators & three 5" fitted on forecastle deck leading to new accommodation below, coamings 36" high to Rule thickness, wood plugs & canvas covers provided.

A 2' x 2' flush hatch, marked "A", has been fitted to the upper deck leading to the space below, now converted to a store space & the new chain locker strongly constructed of wood has been fitted in this space.

A copy of the above memorandum has been placed on board the vessel.

R. Muntton

Belfast. December 1941