

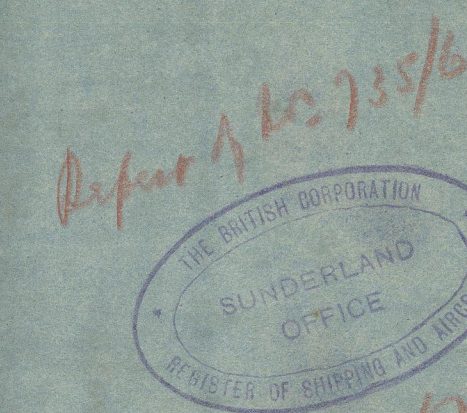
SS N° 738.

PROPOSED
PROFILE & DECKS

SCALE $\frac{1}{8}'' = 1 \text{ FT.}$

LENGTH 847.5'-0" BREADTH MLD. 68'-0" DEPTH MLD. 36'-0"

31 OCT 1940



Approved 8/17/40

Chief Engineer

Chief Engineer

Chief Engineer

Chief Engineer

Chief Engineer

Chief Engineer

Chief Engineer

Chief Engineer

Chief Engineer

Chief Engineer

Chief Engineer

Chief Engineer

Chief Engineer

Chief Engineer

Chief Engineer

Chief Engineer

Chief Engineer

Chief Engineer

Chief Engineer

Chief Engineer

Chief Engineer

Chief Engineer

Chief Engineer

Chief Engineer

Chief Engineer

Chief Engineer

Chief Engineer

Chief Engineer

Chief Engineer

Chief Engineer

Chief Engineer

Chief Engineer

Chief Engineer

Chief Engineer

Chief Engineer

Chief Engineer

Chief Engineer

Chief Engineer

Chief Engineer

Chief Engineer

Chief Engineer

Chief Engineer

Chief Engineer

Chief Engineer

Chief Engineer

Chief Engineer

Chief Engineer

Chief Engineer

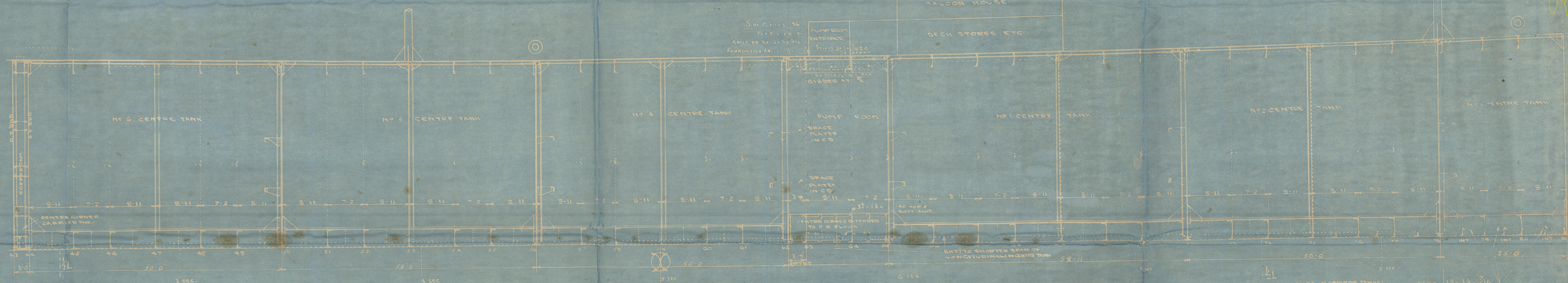
Chief Engineer

Chief Engineer

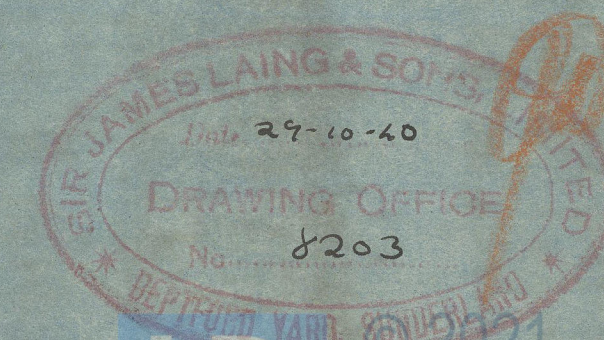
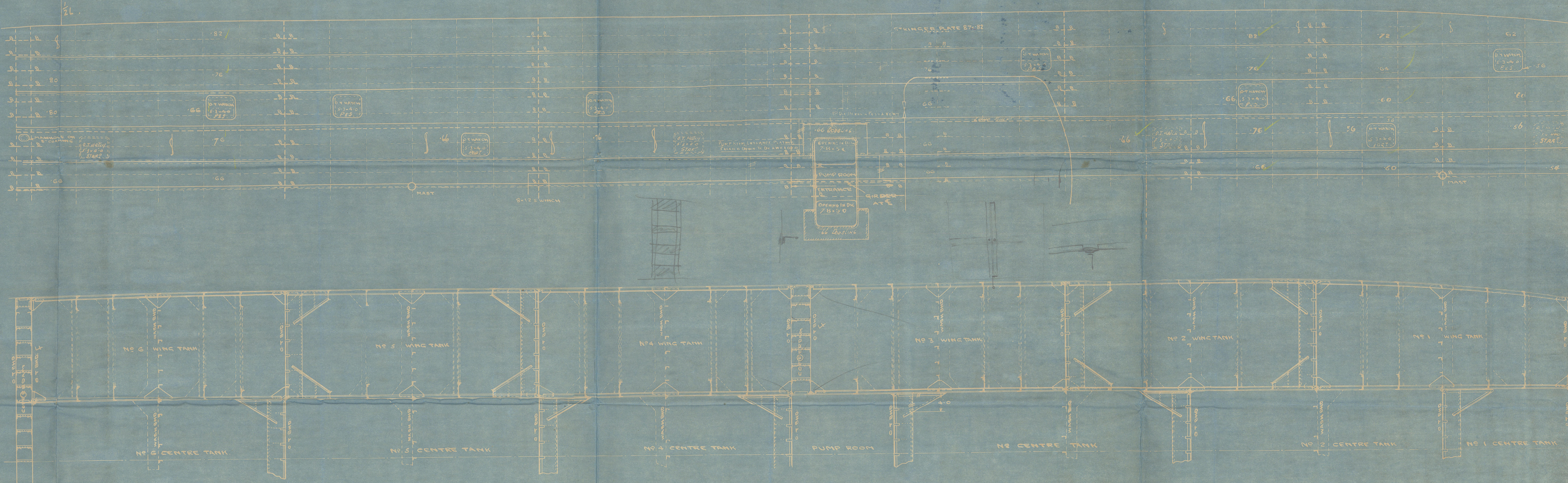
Chief Engineer

Chief Engineer

Chief Engineer



3. All frames marked in
E.L. 25.10
See drawings Report 10



Approved 8/17/40

Chief Engineer

Chief Engineer

002442-002448-0217

'438' Laing's
Profile & Decks



002442-002448-0217



© 2021

Lloyd's Register
Foundation

2

Profile & Deck.

Sir Jaz Laing & Sons

No 728.

T.C. 4.12.40.

H. 11.40.

HAUKEFJELL

EX EMPIRE DRUID

Eagle Oil & Shipping Co Ltd



© 2021

Lloyd's Register
Foundation

002442-002448-0217