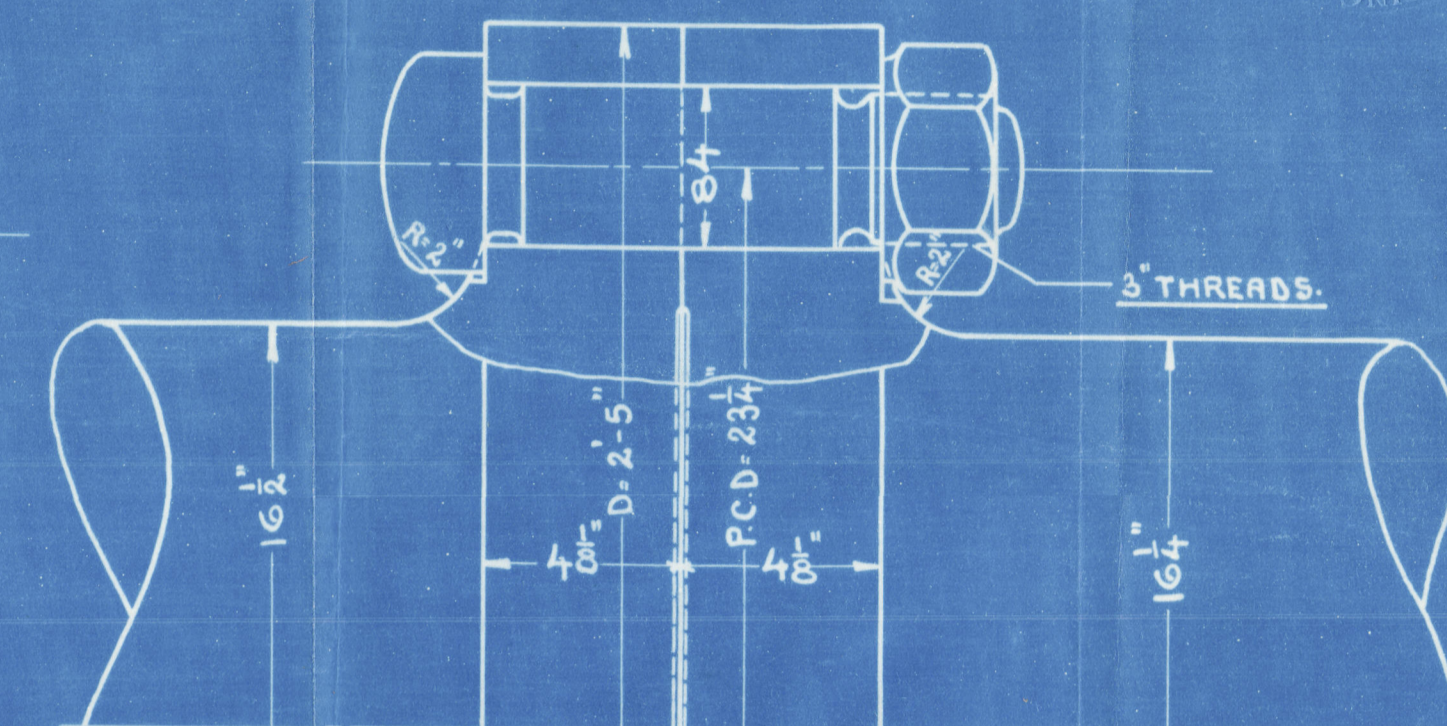
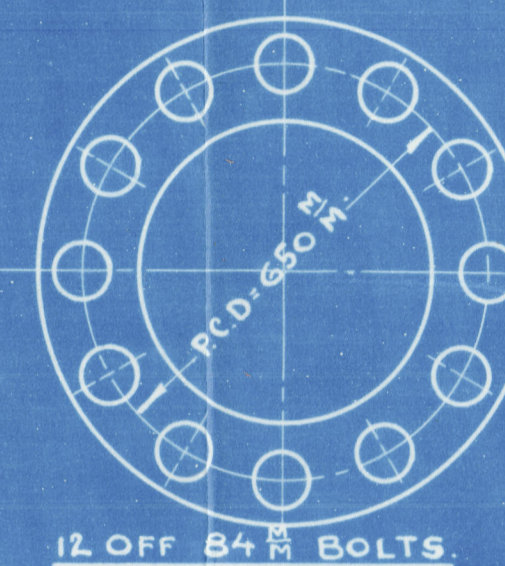
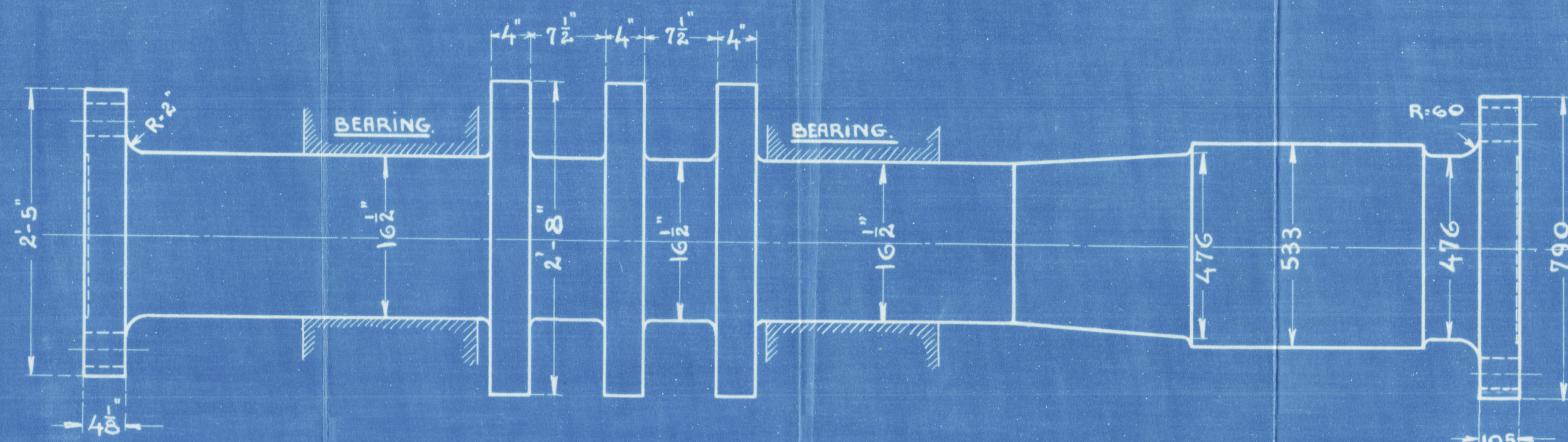
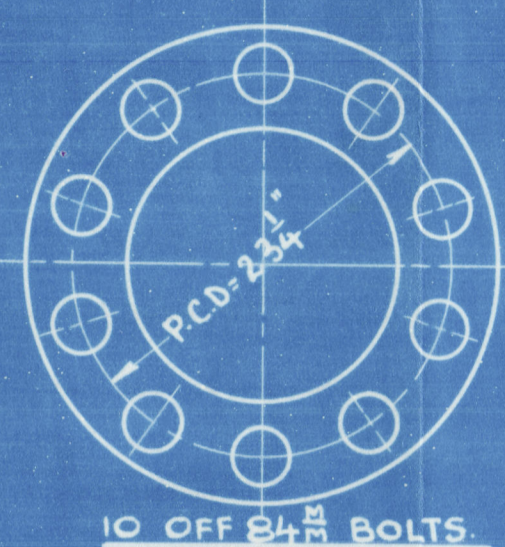


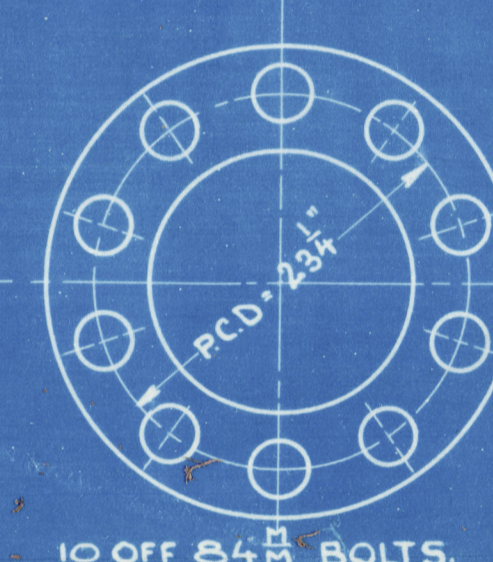
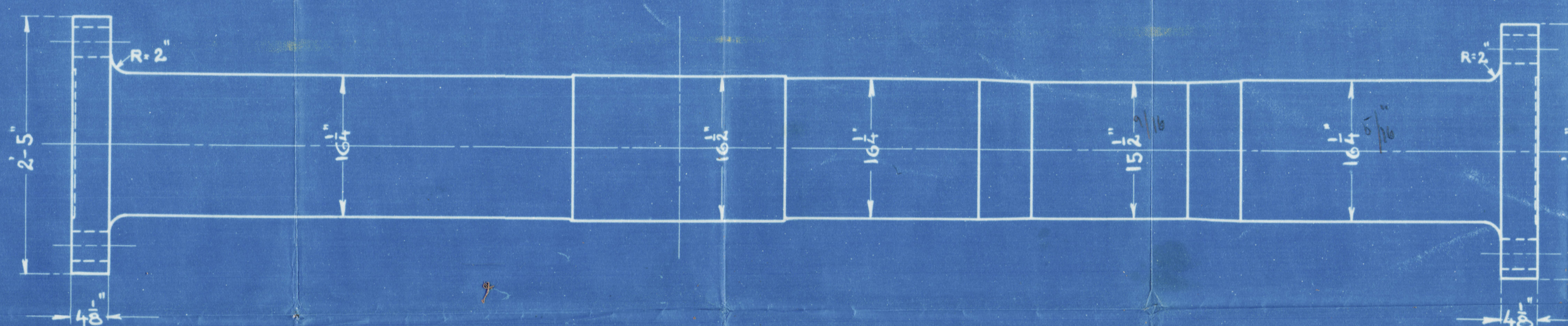
35619

29/9/27

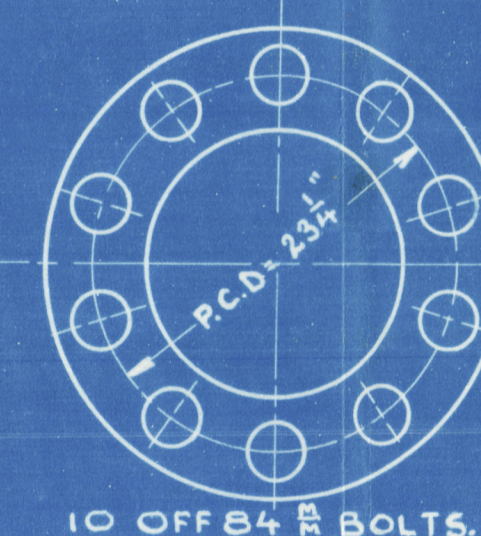
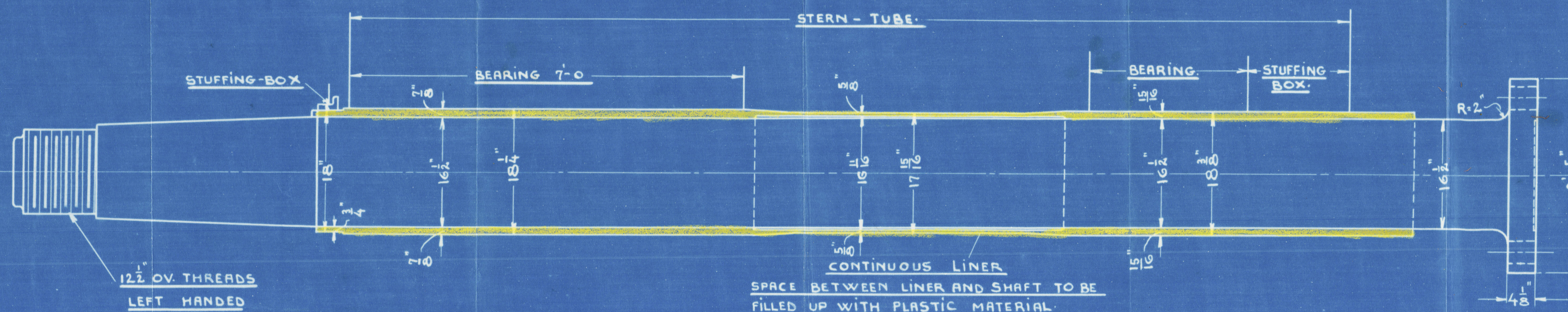


PROPELLER SHAFT.

INTERMEDIATE SHAFT.



10 OFF 84 MM BOLTS.



10 OFF 84 MM BOLTS.

# SHAFTS FOR ODENSE YARD N° 29 & 31.

6 CYL. FOUR STROKE CYCLE DIESEL ENGINE.

CYL. DIAM 740 MM = 29.125"

DIAM. OF PROPELLER = 15'-6"

STROKE 1500 MM = 59.0625"

ROTATING BALANCE WEIGHT CRANK SHAFT = 75600 KG.M<sup>2</sup>

REVS. PR. MIN = 105

" " " TURNING WHEEL = 4000 " "

G-ROTATING WEIGHTS.

D-GRYATION DIAMETER.

TOTAL G.D<sup>2</sup> = 79600 " "

AKTIESELSKABET  
BURMEISTER & WAIN'S MASKIN- OG SKIBSBYGGERI  
24-9-1927

24-9

CB  
29/9/27

AKTIESELSKABET  
BURMEISTER & WAIN'S  
MASKIN- OG SKIBSBYGGERI.

13-9 1927 N° 35619  
002435-002447-0128



*Plan of*

THRUST, INTERMEDIATE

AND SCREW SHAFTS

*for the Diesel Oil Engine  
to be constructed by*

**AKTIESELSKABET  
BURMEISTER & WAIN'S MASKIN- OG SKIBSBYGGERI  
Copenhagen**

*for the Screw Motor Tank Vessels*

*Yard N<sup>o</sup> 29 & 31*

*being built by*

*Odense Stålskibsverft  
ved A. F. Möller.*

*Odense.*

*M/s BEAUMONT OF OSLO*

*Opn. Rpt. N<sup>o</sup> 7881.*

*M/s VARG OF OSLO*

*Opn. Rpt. N<sup>o</sup> 7793.*

002435-002441-0128