

Lloyd's Register of Shipping.

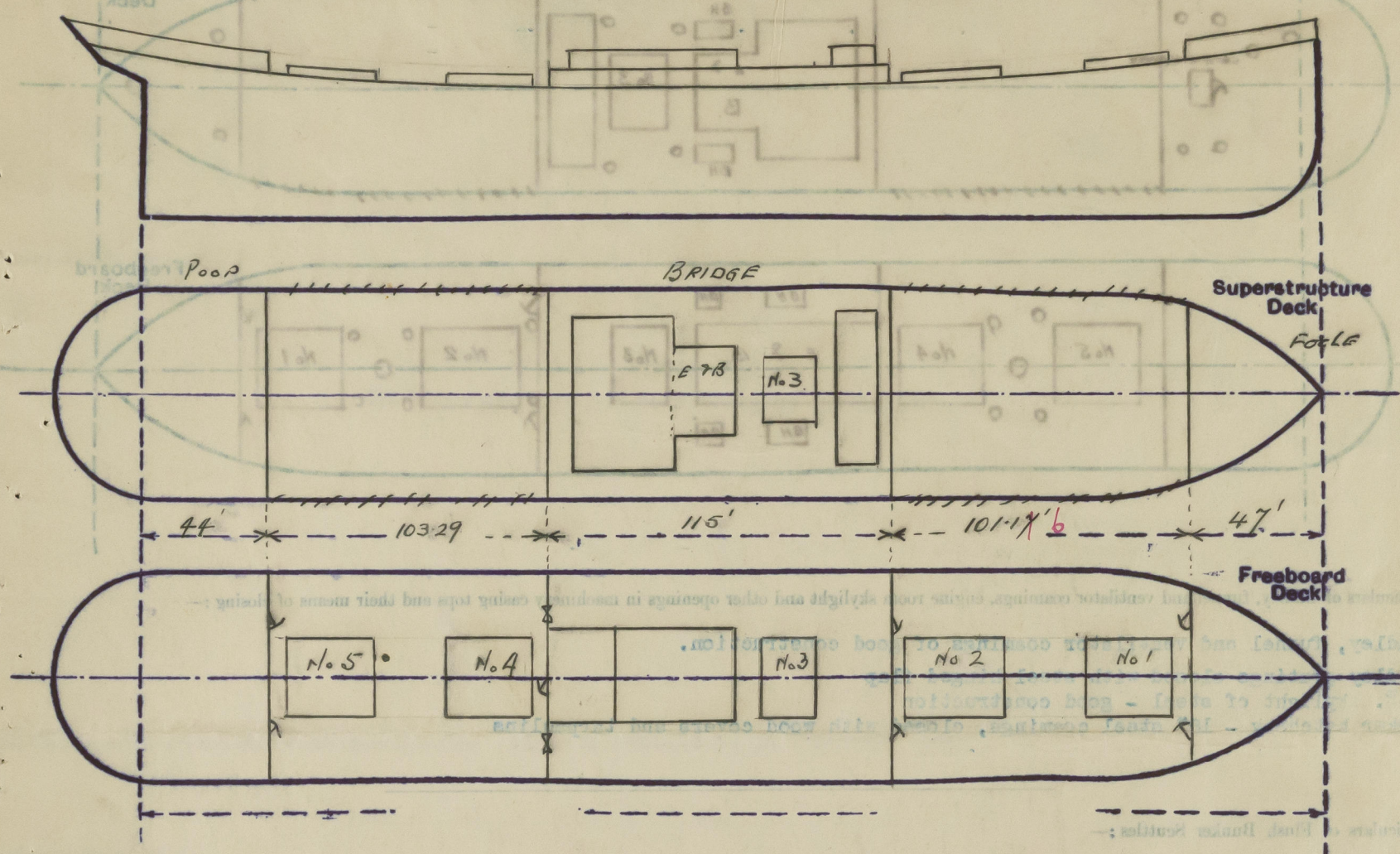
SURVEYS FOR FREEBOARD.

(CONDITIONS OF ASSIGNMENT.)

SIAD MAASTRICHT

Ship's Name ~~WEST TARTAN~~ **EMPIRE MAVIS** Port of Survey **Norfolk, Va.**
 Official Number **168160** Surveyor's Signature *J. Buchanan*
 Nationality and Port of Registry ~~British~~ **Rotterdam** Date of Survey **11th February, 5th April, 1941**

Disposition and dimensions of superstructures, trunks, deckhouses and machinery casings to be inserted in the diagrams and tabular statement:--



Particulars of Superstructures, Trunks, Casings, Deckhouses.

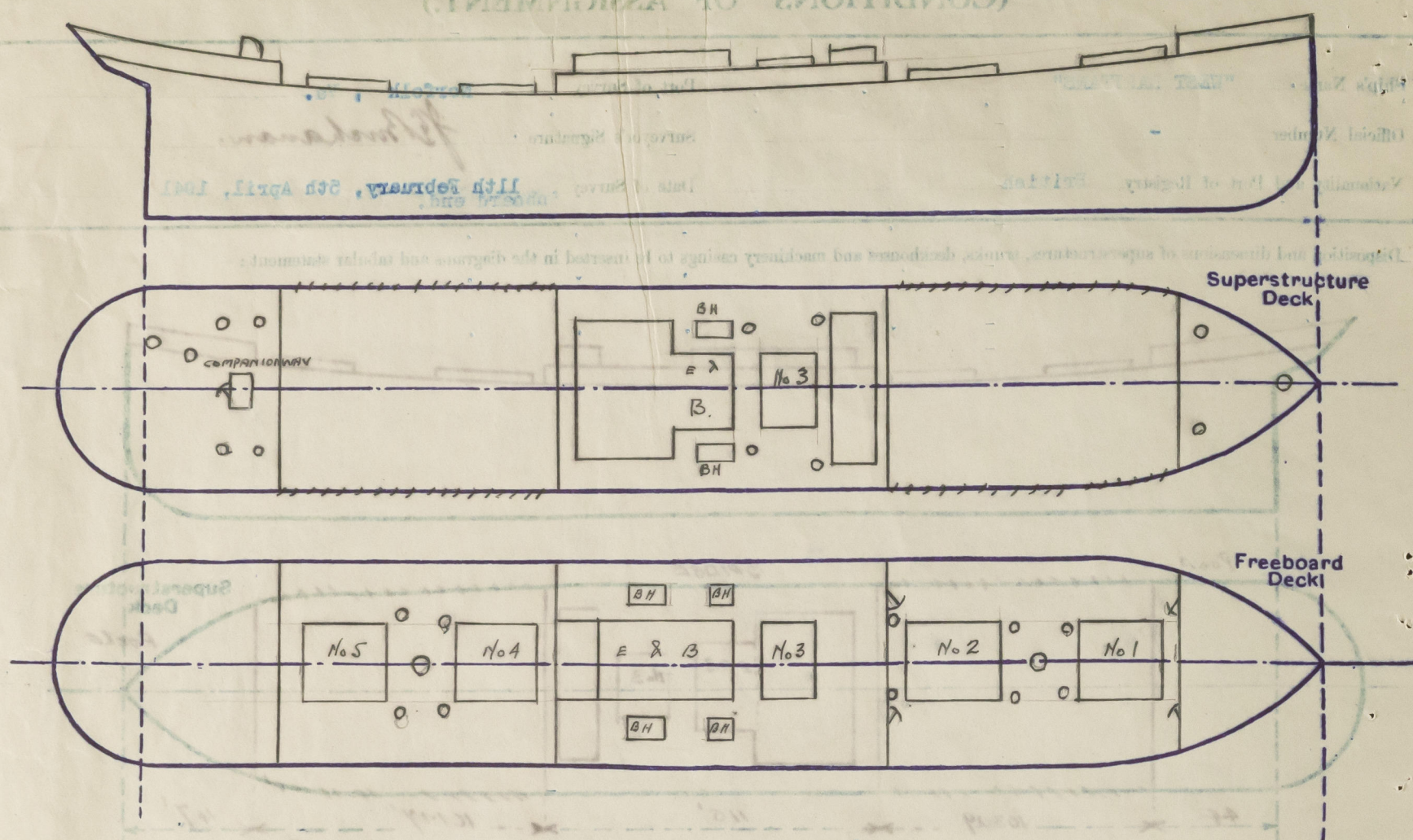
	Coaming	Plating	Stiffeners	Spacing	End Attachments of Stiffeners	Size of Openings	Height of Sills	Height of Casings
Poop Bulkhead46 ✓	.46 ✓	6x3 $\frac{1}{2}$ x.50 ✓	34	None	1 (p&s) 5'x2'	21"	8.5' ✓
Raised Quarter Deck Bulkhead ...	-	-	-	-	-	-	-	-
Bridge, After Bulkhead52 ✓	.42 ✓	6x3 $\frac{1}{2}$ x.38 ✓	33	None	1 (p&s) 4'-9"x4'-3" 1st or 5'x2'-6"	24"	8.5' ✓
Bridge, Forward Bulkhead50 ✓	.42 ✓	8x3 $\frac{1}{2}$ x3 $\frac{1}{2}$ x.46 ✓	30	Brackets Top and Bottom	1 (p&s) 4' x 3'	30"	8.5' ✓
Forecastle Bulkhead38 ✓	.31 ✓	6x3 $\frac{1}{2}$ x.38 ✓	36	None	1 (p&s) 5' x 3'	18"	8.5' ✓
Trunk, Aft ...	-	-	-	-	-	-	-	-
Trunk, Forward ...	-	-	-	-	-	-	-	-
Exposed Machinery Casings on Freeboard or Raised Quarter Decks ...	-	-	-	-	-	-	-	-
Exposed Machinery Casings on Superstructure Decks38 ✓	.34 ✓	4x3x.38 ✓	30"	None at Top Extend Below	1 (p&s) 4'-9"x1'-11"	18"	8.5' ✓
Machinery Casings within Superstructures not fitted with Class I Closing Appliances30 ✓	.28 ✓	4x3x.38 ✓	30 ✓	Extend Up And Down	1 (p) 4'x2' to E.R.	36"	8.5' ✓
Deckhouses on Flush Deck Ships ...	-	-	-	-	-	-	-	-

Particulars of Closing Appliances (state if capable of being manipulated from both sides).

Poop Bulkhead ...	Hinged Steel W.T. Doors	- Manipulated from both sides ✓
Raised Quarter Deck Bulkhead ...	-	-
Bridge, After Bulkhead ...	1 (p&s) Bolted plate 1 at Cr. Steel W.T. insulated door	- Manipulated from outside only ✓
Bridge, Forward Bulkhead ...	Hinged steel W.T. doors	- Manipulated from outside only ✓
Forecastle Bulkhead ...	Hinged steel W.T. doors	- Manipulated from both sides ✓
Exposed Machinery Casings on Freeboard or Raised Quarter Decks ...	-	-
Exposed Machinery Casings on Superstructure Decks ...	Hinged Steel Doors	- Manipulated from both sides ✓
Machinery Casings within Superstructures not fitted with Class I Closing Appliances ...	Hinged steel door	- Manipulated from both sides ✓
Deckhouses on Flush Deck Ships ...	-	-

PARTICULARS OF PROTECTION TO OPENINGS, ETC.

The following diagrams should be used to indicate the positions of cargo and coaling hatchways, gangway, cargo and coaling ports, ventilators, companionways, etc., which would affect the seaworthiness of the ship:—



Particulars of fiddle, funnel and ventilator coamings, engine room skylight and other openings in machinery casing tops and their means of closing:—

Fiddle, funnel and ventilator coamings of good construction.

Fiddle gratings closed with steel hinged flap

E. R. skylight of steel - good construction

Bunker hatchway - 18" steel coamings, closed with wood covers and tarpaulins

Particulars of Flush Bunker Scuttles:—

NONE

Particulars of Companionways:—

Steel companionway on Poop Deck to crew's quarters, strongly constructed with hinged steel doors, manipulated from both sides.

Height of sill 16"

Particulars of Ventilators in exposed positions on freeboard and superstructure decks:—

Deck	No.	Dia.	Height	Thick.
Forecastle Deck	1	15"	42"	.30
	1 (p&s)	23"	42"	.50
Forewell Deck	1	23"	42"	.56
	1 (p&s)	23"	42"	.40
	1 (p&s)	23"	42"	.54
Bridge Deck	1	20"	42"	.36
	1 (p&s)	18"	42"	.28
After Well Deck	2	24"	42"	.50
Poop Deck	1	12"	36"	.28
	1 (p&s)	24"	36"	.50
	1 (p)	23"	36"	.30
	1 (p)	12"	36"	.28

All ventilator coamings fitted with wood plugs and canvas covers.

Particulars of Air Pipes in exposed positions on freeboard, raised quarter, or superstructure decks:—

Deck	No.	Dia.	Height
Forecastle Deck	1 (cr)	3-1/2"	24"
	1 (p&s)	3-1/2"	24"
Forewell Deck	4 (p&s)	3-1/2"	24"
Bridge Deck	2 (p&s)	3-1/2"	24"
After Well Deck	2 (p&s)	3-1/2"	24"
Poop Deck	1 (p&s)	3-1/2"	24"
	1 (cr)	3-1/2"	24"

Openings closed with hinged metal flaps

Particulars of Gangway Cargo and Coaling Ports:—

Position of Hatchway	Dimensions of Hatchway	Particulars of Hatchway
Forecastle Deck	10' x 17'	10' x 17'
Forewell Deck	10' x 17'	10' x 17'
Bridge Deck	10' x 17'	10' x 17'
After Well Deck	10' x 17'	10' x 17'
Poop Deck	10' x 17'	10' x 17'

Particulars of Scuppers and Sanitary Discharge Pipes:—

C.I. flap valves on shell with traps at inboard end.

Particulars of Side Scuttles:—

Good construction and complete with deadlights

Vertical distance of Sill of lowest Side Scuttle above top of keel. No side scuttle below freeboard deck.

Particulars of Guard Rails:—

On poop, Bridge and Forecastle decks

3 tier rails - 40" high, stanchions about 4'-6" apart

Particulars of Gangways, Lifelines, etc.:—

Provision made for fitting lifelines.

Particulars of Freeing Arrangements.						
	Length of Bulwark	Height of Bulwark	Size of Freeing Ports	Number each side	Area each side	Rule area each side
After Well	103.29	42"	41" x 18"	4	20.5 sq. ft.	20.6 sq. ft.
Forward Well	101.17	42"	40" x 18"	4	20 sq. ft.	20.2 sq. ft.

State position of each freeing port ... After Well:— From BR. EHD. - 18', 37', 65', 81', - 12" above deck

(F. and A. position and height above deck edge) Forward Well:— From BR. EHD. - 14', 38', 63', 81', - 12" above deck

State whether the freeing ports are fitted with shutters, bars, or rails, and give particulars of such:— 2 Horizontal Bars.

Additional area where sheer is less than standard.

PARTICULARS OF PROTECTION TO OPENINGS, ETC.

HATCHWAYS ON FREEBOARD AND SUPERSTRUCTURE DECKS.										
	On Freeboard Deck					On Bridge Dk.				
Description of Hatchway	No. 1	No. 2	No.3	No.4	No. 5	Bunker (p & s)	Hatches (p & s)		No. 3	Bunker (F & S)
Dimensions of Hatchway	29'-3x17	31'6"x17	15'-9x17	29-3x17	27 x 17	6'-3x6'	3'x3'6"		15'9x17'	8'6x3'
COAMINGS	Height above Deck	38	38	13	38	38	10"	10"	39"	18"
	Thickness	.56	.56	.50	.54	.54	.42	.42	.50	.40
	Sides	.56	.56	.50	.54	.54	.42	.42	.50	.40
	Ends	.56	.56	.50	.54	.54	.42	.42	.50	.40
Stiffeners	8x3 1/2 x 3 1/2	46	-	8x3 1/2 x 3 1/2	5 Bkts	(p&s)	-	to rule	8x3 1/2 x 3 1/2	-
Brackets, Stays	5 Bkts	(p&s)	-	5 Bkts	(p&s)	-	-	requirements	3 bkts (p&s)	-
HATCH BEAMS	Number	5	5	3	5	5	-	-	3	-
	Spacing	4.87	5.25	3.94	4.87	4.5	-	-	3.94	-
	Scantling and Sketch	4x3x.42	5x3x.42	4x3x.44	4 x 3 x .42	4 x 3 x .42	Hatch beam for led	-	4x3x.44	-
		22 1/2 x .40	22 1/2 x .40	21x.36	22-1/2 x .40	22-1/2 x .40	for led	-	22 1/2 x .40	-
Bearing Surface	4x3x.42	5x3x.40	4x3x.44	4 x 3 x .42	4 x 3 x .42	unattached	-	4x3x.44	-	
	2-5	2-5	2-5	2-5	2-5	span	-	2	-	
FORE AND AFTERS	Number									
	Spacing									
	Unsupported Lengths									
	Scantling and Sketch			NONE						
Bearing Surface										
HATCH COVERS	Material			wood			to rule	to rule	wood	wood
	Thickness			2-1/2			requirements	requirements	2-1/2	2-3/4
	How fitted			F & A					F & A	Thwartship
	Bearing Surface			2-1/2					2-1/2	2-1/2
Spacing of Cleats			24						24	24
Number of Tarpaulins	3	3	1	3	3	1	1		3	2

*Are wood fore and afters steel shod at all bearing surfaces? -
 Are battens and wedges efficient and in good condition? Yes
 Are tarpaulins in good condition and in accordance with rule requirements? Yes - all new.
 Are lashings provided in accordance with rule requirements? Yes

Particulars of any special features:—

Endorsement at first survey and at surveys for renewal of Certificate:—

The fittings and appliances are in accordance with the particulars shown on this form (or as now modified) and are in good condition.

Particulars of Freeboard Arrangements						
Length of Bulkhead	Height of Bulkhead	Size of Freeboard Part	Number each side	Area each side	Area each side	Area each side
100.00	42"	12" x 12"	4	30.00	30.00	30.00
100.00	42"	12" x 12"	4	30.00	30.00	30.00

Area of bulkhead above deck: 12" x 12" = 144 sq. in. = 1.0 sq. ft.
 Area of bulkhead above deck: 12" x 12" = 144 sq. in. = 1.0 sq. ft.
 Area of bulkhead above deck: 12" x 12" = 144 sq. in. = 1.0 sq. ft.

