

Lloyd's Register of Shipping.

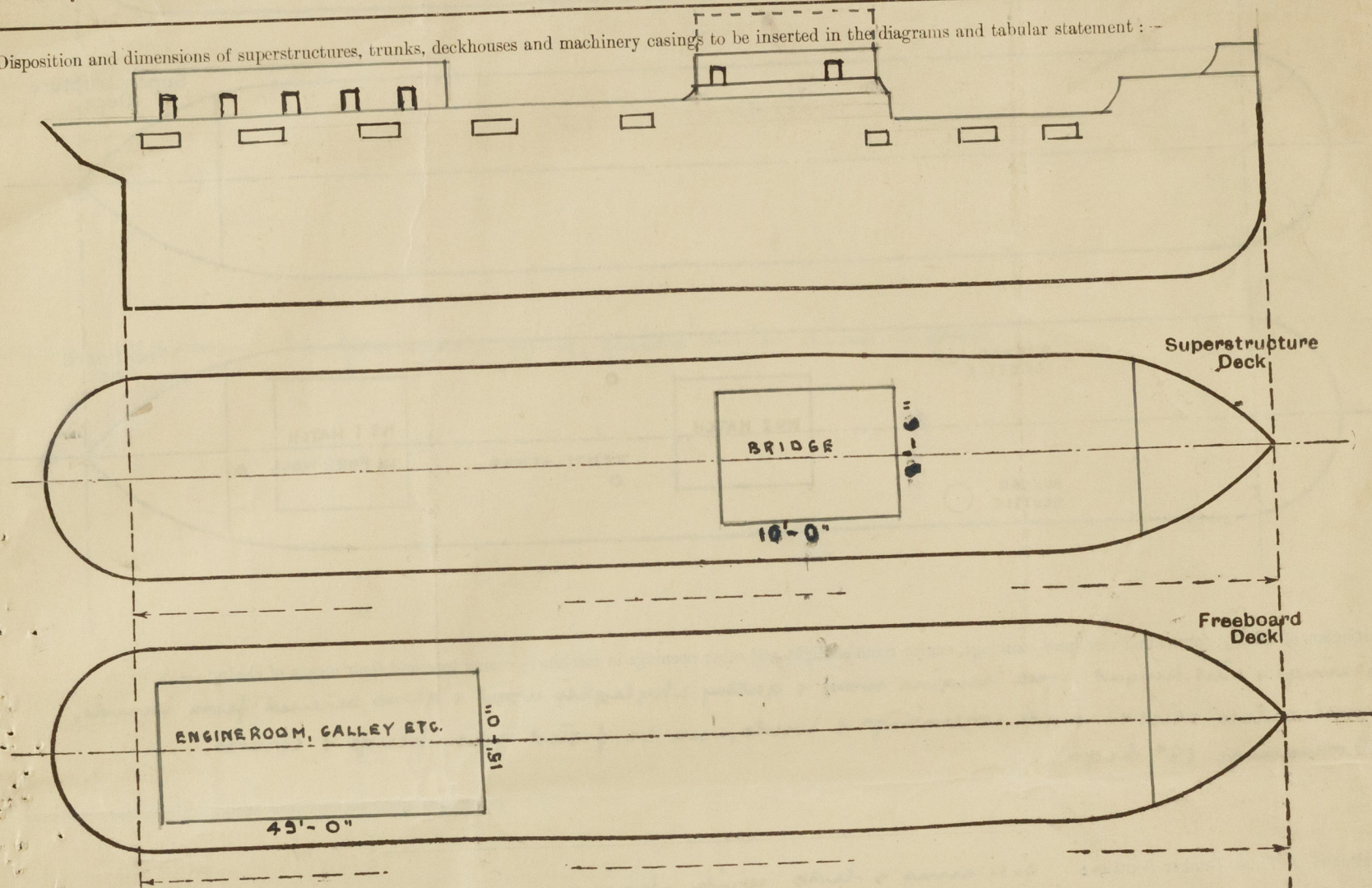
SURVEYS FOR FREEBOARD.

(CONDITIONS OF ASSIGNMENT.)

JAN 10 1938

Ship's Name **S.S. "AFRICA"**Port of Survey **Aden**Official Number **120671**Surveyor's Signature **Geo. P. Dunn.**Nationality and Port of Registry **British. Bombay.**Date of Survey **23rd December 1934**

Disposition and dimensions of superstructures, trunks, deckhouses and machinery casings to be inserted in the diagrams and tabular statement:—



Particulars of Superstructures, Trunks, Casings, Deckhouses.

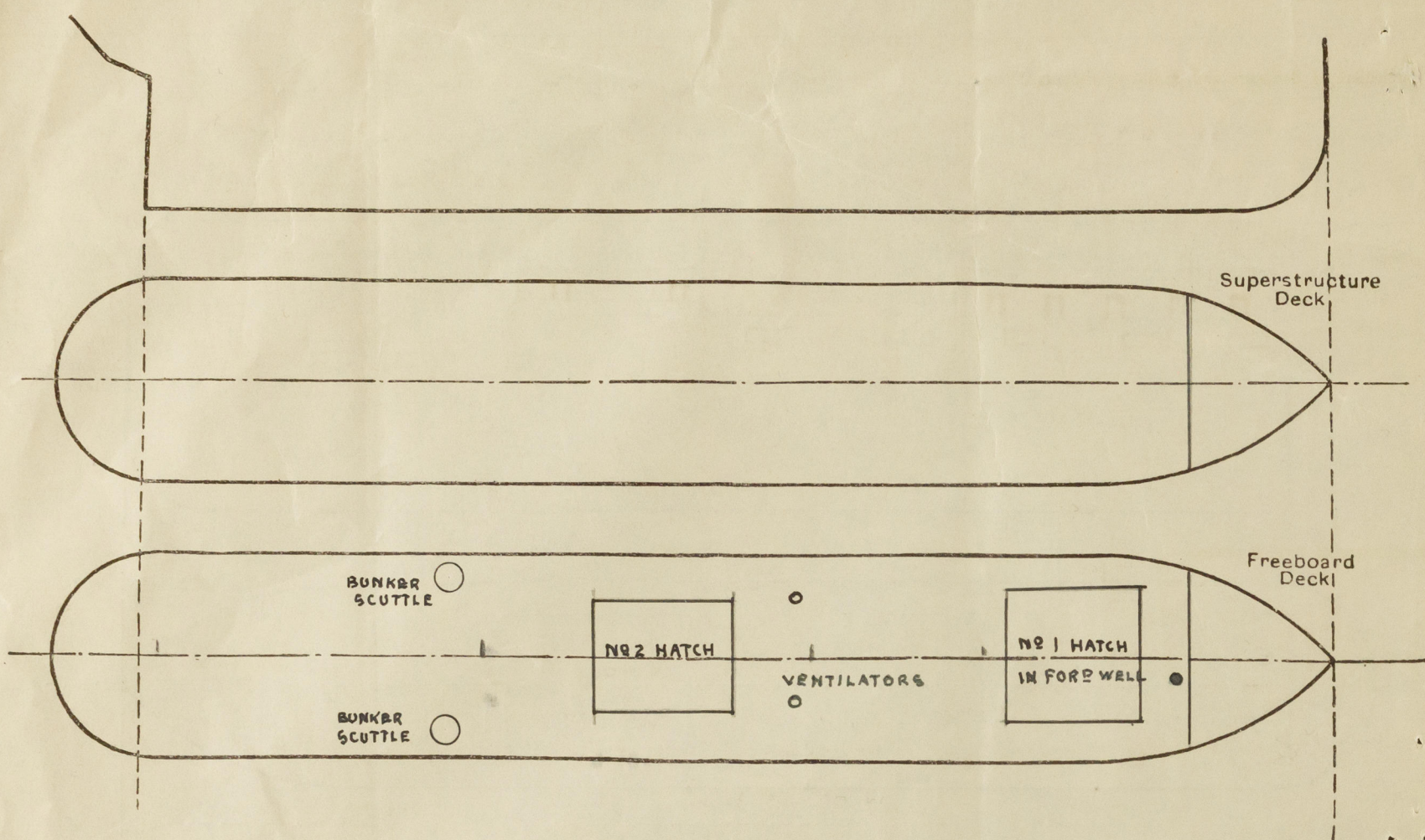
	Coaming	Plating	Stiffeners	Spacing	End Attachments of Stiffeners	Size of Openings	Height of Sills	Height of Casings
Peep Bulkhead								
Raised Quarter Deck Bulkhead ...		3/8"	3 1/4 x 3 x 1/16	2'-0"	3/8 knees	Wid		
Bridge, After Bulkhead		3/8"	3 1/4 x 3 x 1/16	2'-0"	3/8 knees	Wid		
Bridge, Forward Bulkhead		3/8"	3 1/4 x 3 x 1/16	2'-0"	3/8 knees	Wid		
Forecastle Bulkhead		3/8"	3 x 3 x 3/8	2'-4 1/2	3/8 knees	4'-3" x 2'-3"	15"	
Trunk, Aft								
Trunk, Forward								
Exposed Machinery Casings on Freeboard or Raised Quarter Decks ...	2'-3"	1/16	3 1/4 x 3 x 5/16	2'-4 1/2	3/8 knees	4'-8" x 2'-3"	16"	6'-6"
Exposed Machinery Casings on Superstructure Decks								
Machinery Casings within Superstructures not fitted with Class I Closing Appliances								
Deckhouses on Flush Deck Ships ...								

Particulars of Closing Appliances (state if capable of being manipulated from both sides).

Peep Bulkhead	
Raised Quarter Deck Bulkhead ...	No openings
Bridge, After Bulkhead	No openings
Bridge, Forward Bulkhead	No openings
Forecastle Bulkhead	Hinged steel doors can be manipulated both sides
Exposed Machinery Casings on Freeboard or Raised Quarter Decks ...	3 steel + 2 lead doors both sides, can be manipulated both sides
Exposed Machinery Casings on Superstructure Decks	all doors hinged
Machinery Casings within Superstructures not fitted with Class I Closing Appliances	
Deckhouses on Flush Deck Ships ...	

PARTICULARS OF PROTECTION TO OPENINGS, ETC.

The following diagrams should be used to indicate the positions of cargo and coaling hatchways, gangway, cargo and coaling ports, ventilators, companionways, etc., which would affect the seaworthiness of the ship:—



Particulars of fiddle, funnel and ventilator coamings, engine room skylight and other openings in machinery casing tops and their means of closing:—

Gangways & side hinged doors engine room & galley skylights wood & glass secured from inside, ventilator steel & angle coamings & covers, can be fitted with plug & covers. Coamings 18" high

Particulars of Flush Bunker Scuttles:— c.i. rim & lids with chains

Particulars of Companionways:— w.e

Particulars of Ventilators in exposed positions on freeboard and superstructure decks:— Steel & angle coamings & covers & can be fitted with plug & covers. Coamings 15" high

Particulars of Air Pipes in exposed positions on freeboard, raised quarter, or superstructure decks:— Brass with screwed brass caps.

Particulars of Gangway Cargo and Coaling Ports:—

Particulars of Scuppers and Sanitary Discharge Pipes:— Dead pipe fitted with brass storm valves.

Particulars of Side Scuttles:— In forecastle only, fitted with dead lights.

Vertical distance of Sill of lowest Side Scuttle above top of keel

Particulars of Guard Rails:— All bulwarks

Particulars of Gangways, Lifelines, etc.:— As per rules

Particulars of Freeing Arrangements.

	Length of Bulwark	Height of Bulwark	Size of Freeing Ports	Number each side	Area each side	Rule area each side
After well Raised Q.D....	39' - 0"	3' - 0"	(3) 30" x 18" (2) 24" x 18"	5	13.25	13.5
Forward Well	26' - 0"	3' - 5"	(1) 36" x 18" (1) 30" x 18" (1) 12" x 12"	3		

State position of each freeing port After Well:— See diagram

(F. and A. position and height above deck edge) Forward Well:— Flush with deck F and A

State whether the freeing ports are fitted with shutters, bars, or rails, and give particulars of such:— Steel shutters & wire bar hinge

Additional area where sheer is less than standard.

PARTICULARS OF PROTECTION TO OPENINGS, ETC.

HATCHWAYS ON FREEBOARD AND SUPERSTRUCTURE DECKS.									
Description of Hatchway
Dimensions of Hatchway
COAMINGS	Height above Deck
	Thickness
	Sides
	Ends
HATCH BEAMS	Number
	Spacing
	Scantling and Sketch
	Bearing Surface
FORE AND AFTERS	Number
	Spacing
	Unsupported Lengths
	Scantling and Sketch
HATCH COVERS	Material
	Thickness
	How fitted
	Bearing Surface
Spacing of Cleats
Number of Tarpaulins
<p>*Are wood fore and afters steel shod at all bearing surfaces? yes ✓</p> <p>Are battens and wedges efficient and in good condition? yes ✓</p> <p>Are tarpaulins in good condition and in accordance with rule requirements? yes ✓</p> <p>Are lashings provided in accordance with rule requirements? yes ✓</p>									

Particulars of any special features:—

Endorsement at first survey and at surveys for renewal of Certificate:—

The fittings and appliances are in accordance with the particulars shown on this form (~~or as now modified~~) and are in good condition.

G. W. W. W.

SURVEYOR TO LLOYD'S REGISTER
ADEN.



© 2020

Lloyd's Register
Foundation