

Lloyd's Register of Shipping.

RPT. NO. 14361.

SURVEYS FOR FREEBOARD.

(CONDITIONS OF ASSIGNMENT.)

FURNESS S.B. C/L^{TD} N: 349.

Ship's Name S/S "EMPIRE NUGGET"

Port of Survey MIDDLESBROUGH.

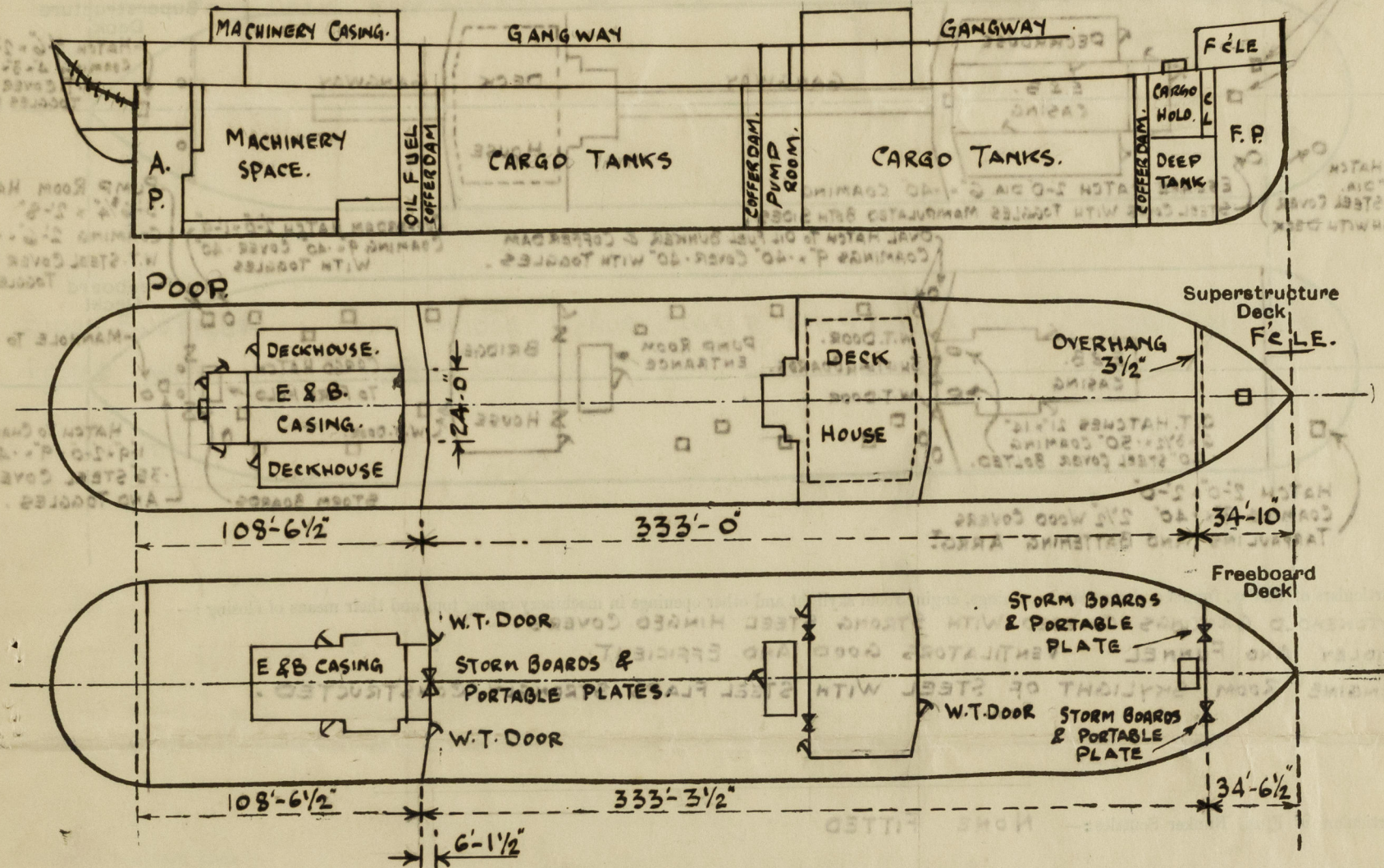
Official Number 164860

Surveyor's Signature H. B. Young. Cyril B. Leaver.

Nationality and Port of Registry BRITISH,

Date of Survey WHILE BUILDING

Disposition and dimensions of superstructures, trunks, deckhouses and machinery casings to be inserted in the diagrams and tabular statement:



Particulars of Superstructures, Trunks, Casings, Deckhouses.

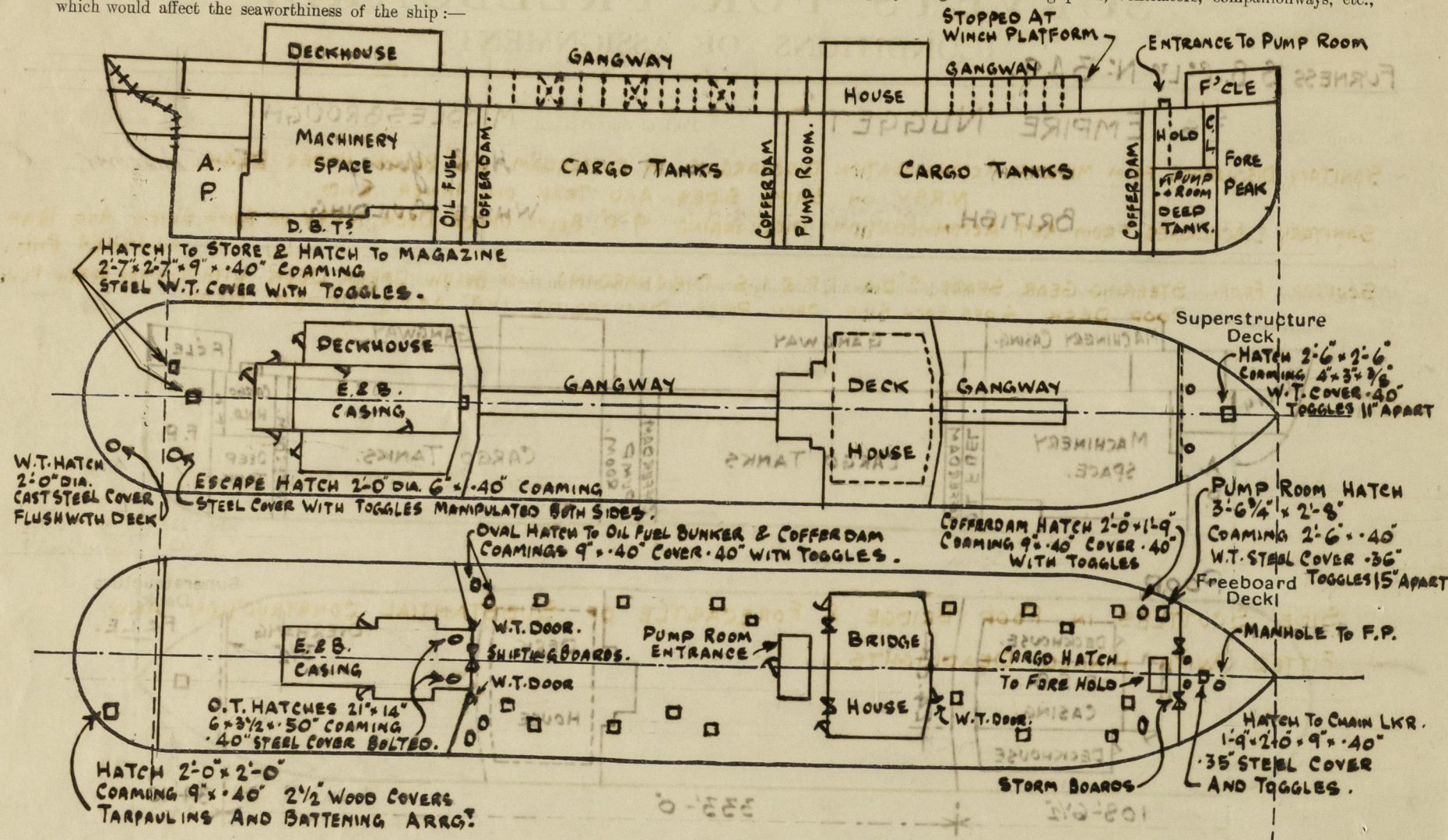
	Coaming	Plating	Stiffeners	Spacing	End Attachments of Stiffeners	Size of Openings	Height of Sills	Height of Casings
Poop Bulkhead ...	PLATED VERTICALLY	4 1/2"	10 x 3 1/2 x 50 L	30"	LUGS AT TOP E.W. AT BOTTOM	2 OFF 4'-10" x 2'-1" 1 OFF 5'-0" x 5'-0"	18" 18"	7'-6"
Raised Quarter Deck Bulkhead ...								
Bridge, After Bulkhead ...								
Bridge, Forward Bulkhead ...								
Forecastle Bulkhead ...	PLATED VERTICALLY	30"	5 x 3 x 30 L	30"	NOT ATTACHED	3'-1" x 4'-1"	18"	7'-6"
Trunk, Aft ...								
Trunk, Forward ...								
Exposed Machinery Casings on Freeboard or Raised Quarter Decks ...								
Exposed Machinery Casings on Superstructure Decks ...	3'-2" x 30"	.26"	4 x 2 1/2 x 25 L	30"	BRTS ON TOP & CARRIED DOWN	✓	✓	7'-6"
Machinery Casings within Superstructures not fitted with Class I Closing Appliances ...			MIDSHIP HOUSE F.E. 6 x 3 x 36 L SIDES 4 x 3 x 34 L AFT. 3 1/2 x 3 x 32 L	30" 30" 33"	BRTS. T. & B. BRTS. T. & B. NOT ATTACHED	4'-10" x 2'-4" NO OPENINGS 2'-1" x 4'-7" 4'-1" x 3'-7"	18" 18"	7'-0" 7'-0" 7'-0"
Deckhouses on Flush Deck Ships ...	PLATED VERTICALLY	.35"						

Particulars of Closing Appliances (state if capable of being manipulated from both sides).

Poop Bulkhead ...	HINGED STEEL W.T. DOOR PORT & STARBOARD SIDES, MANIPULATED FROM BOTH SIDES PORTABLE PLATE WITH HOOKED BOLTS 12" APART (IN CENTRE) AND STORM BOARDS.
Raised Quarter Deck Bulkhead ...	✓
Bridge, After Bulkhead ...	✓
Bridge, Forward Bulkhead ...	✓
Forecastle Bulkhead ...	PORTABLE PLATES WITH HOOKED BOLTS 12" APART, PORT & STARBOARD SIDES.
Exposed Machinery Casings on Freeboard or Raised Quarter Decks ...	✓
Exposed Machinery Casings on Superstructure Decks ...	NO OPENINGS
Machinery Casings within Superstructures not fitted with Class I Closing Appliances ...	NO OPENINGS
Deckhouses on Flush Deck Ships ...	FORE END W.T. STEEL HINGED DOOR, STARBOARD SIDE, MANIPULATED FROM BOTH SIDES. NO OPENING IN SIDES. AFT END TWO STEEL HINGED DOORS MANIPULATED FROM BOTH SIDES. PORTABLE PLATE WITH HOOKED BOLTS 12" APART PORT & STARBOARD SIDES.

PARTICULARS OF PROTECTION TO OPENINGS, ETC.

The following diagrams should be used to indicate the positions of cargo and coaling hatchways, gangway, cargo and coaling ports, ventilators, companionways, etc., which would affect the seaworthiness of the ship :—



Particulars of fiddle, funnel and ventilator casings, engine room skylight and other openings in machinery casing tops and their means of closing :—

STOKHOLD GRATINGS COVERED WITH STRONG STEEL HINGED COVERS.

FIDLEY AND FUNNEL VENTILATORS GOOD AND EFFICIENT.

ENGINE ROOM SKYLIGHT OF STEEL WITH STEEL FLAPS STRONGLY CONSTRUCTED.

Particulars of Flush Bunker Scuttles:— **NONE** **FITTED**

Particulars of Companionways :- PUMP ROOM ENTRANCE AFT OF MIDSHIP HOUSE 18'-0" x 8'-0" x 7'-0".
 PLATED VERTICALLY .35, STIFFENERS ON ALL SIDES 4 x 3 x .36" T SPACED 2'-0" APART ON SIDES AND 2'-6" APART
 ON FORE & AFT ENDS. STEEL HINGED W.T. DOOR ON AFTER END MANIPULATED FROM BOTH SIDES.
 18" COAMING. TOP PLATING .25" BEAMS 5" x 3" x .30" C, AND 2 STEEL SKYLIGHTS ON TOP, STRONGLY CONSTRUCTED.
PUMP ROOM ENTRANCE ON FORE DECK. HATCH 3'-6 3/4" x 2'-8" COAMING 2'-6" x .40" WITH
 STEEL W.T. COVER .36" TOGGLES 15" APART.

Particulars of Ventilators in exposed positions on freeboard and superstructure decks:—

VENTILATORS ON FORECASTLE DECK, LED TO FORE HOLD				
15" DIA COAMINGS	3'-0" x 3'-6"	P & S SIDES		
UPPER DECK TO FORWARD PUMP ROOM	9' - "	3'-0" x 3'-2"	1 OFF.	
" " " AFTER " "		15" DIA DERRICK POSTS	P & S SIDES.	
CASING TOP LED TO PASSAGEWAY IN POOP	3 OFF P & S SIDES,	9" DIA COAMINGS	1'-9" x 3'-2"	
POOP DECK LED TO STEERING GEAR SPACE & STORE,	6" DIA COAMING	2'-6" x 3'-0"	6 OFF.	
" " " DRYING & OILSKIN ROOMS	5 DIA GOOSENECKS	15" HIGH STEEL TUBES	& CAST STEEL TOPS.	
" " " ACCOMMODATION IN POOP	5' - "	13' - "	" " " " " "	

ALL VENTILATORS CONSTRUCTED IN ACCORDANCE WITH THE RULES AND COAMINGS CLOSED WITH WOOD PLUGS AND CANVAS COVERS.

Particulars of Air Pipes in exposed positions on freeboard, raised quarter, or superstructure decks :—

AIR PIPES ON FORECASTLE DK. LED TO FORE PEAK					1 OFF	4" DIA.	GOOSE NECK	18" HIGH
"	"	"	UPPER DK. LED TO FORE DEEP TANK	2 "	4 "	"	"	36 "
"	"	"	" " " COFFERDAMS	2 "	4 "	"	"	36 "
"	"	"	" " " AFTER PEAK TANK	2 "	4 "	"	"	18 "
"	"	"	" " " RUDDER TRUNK	2 "	4 "	"	"	18 "
"	"	"	" " " OIL FUEL BUNKER	2 "	4 "	"	"	18 "
"	"	"	UPPER " " " "	4 "	4 "	"	"	36 "
"	"	"	POOP " " " D.B. TANKS	4 "	2 OFF 2 1/2 " & 2 OFF 4" DIA.	"	"	18 "

SOUNDING PIPES TO OIL FUEL D.B.T.'S 2 OFF 2' DIA. 4-0" ABOVE TANK TOP FITTED WITH SELF CLOSING COCKS.
AIR PIPES TO OIL FUEL BURNERS 5-0" " " SCREW CHAINED CAPS.

AIR PIPES TO OIL FUEL BUNKERS FITTED WITH GOOSENECKS WITH GAUZE AND SCREW COVERS. PEAKS & F.W. TANKS AIR PIPE GOOSENECK CLOSED WITH WOOD PLUGS AND CANVAS COVERS.

SOUNDING PIPE DECK PIECES
12" HIGH, WITH FLANGE.
TO TAKE EJECTORS.
BRASS SCREW PLUGS CHAINED
ON PIPE.

Particulars of Gangway Cargo and Coaling Ports:—

NONE FITTED.

Particulars of Scuppers and Sanitary Discharge Pipes :—

SANITARY DISCHARGES FROM MIDSHIP ACCOMMODATION DISCHARGING IN COFFERDAM 8'-0" BELOW UPPER DECK
N.R.S.V. ON SHIPS SIDES AND TRAP ON INNER END.

SANITARY DISCHARGES FROM AFT ACCOMMODATION DISCHARGING 9'-0" BELOW UPPER DECK, N.R.S.V. ON SHIP'S SIDES AND TRAP ON INNER END.

SCUPPER FROM STEERING GEAR SPACE, 2" DIA. 1, P & 1, S. DISCHARGING 1'-0" BELOW UPPER DECK WITH CHAINED SCREW PLUG.

" " POOP DECK, 4 OFF EACH SIDE OPEN PIPES DISCHARGING 1'-9" ABOVE UPPER DECK.

Particulars of Side Scuttles:—

SIDE SCUTTLES IN POOP BRIDGE & FORECASTLE OF SUBSTANTIAL CONSTRUCTION AND FITTED WITH HINGED DEADLIGHTS.

Vertical distance of Sill of lowest Side Scuttle above top of keel.

42'-3"

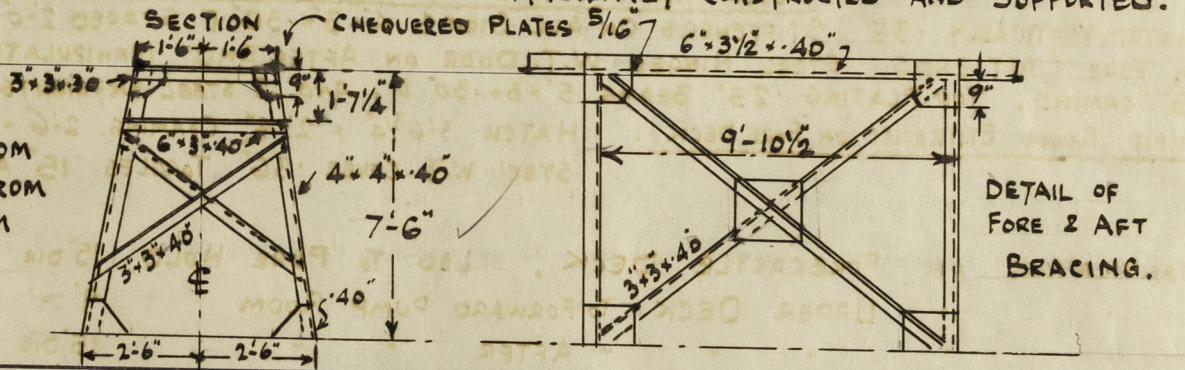
Particulars of Guard Rails :—

GUARD RAILS ON POOP 3 RODS 3'-8" HIGH WITH STANCHIONS SPACED 4'-9" APART.

BULWARK MIDSHIPS IN WAY OF DECKHOUSE 3'-6" HIGH EFFICIENTLY CONSTRUCTED AND SUPPORTED.

Particulars of Gangways, Lifelines, etc. :—

FORE & AFT GANGWAY IN CENTRE FROM
POOP TO AFTER PUMP ROOM AND FROM
BRIDGE HOUSE TO WINCH PLATFORM



Particulars of Freeing Arrangements.

Particulars of Freeing Arrangements.						
	Length of Bulwark	Height of Bulwark	Size of Freeing Ports	Number each side	Area each side	Rule area each side
After Well	FLUSH DECK.		✓			
Forward Well						

State position of each freeing port	{ After Well :—
(F. and A. position and height above deck edge)			

State whether the freeing ports are fitted with shutters, bars, or rails, and give particulars of such:—

Additional area where sheer is less than standard.

002401-002409-01642

PARTICULARS OF PROTECTION TO OPENINGS, ETC.

HATCHWAYS ON FREEBOARD AND SUPERSTRUCTURE DECKS.									
Description of Hatchway									
Dimensions of Hatchway									
COAMINGS	Height above Deck								
	Thickness	Sides							
	Stiffeners	Ends							
	Brackets, Stays								
HATCH BEAMS	Number								
	Spacing								
	Scantling and Sketch								
	Bearing Surface								
FORE AND AFTERS	Number								
	Spacing								
	Unsupported Lengths								
	Scantling* and Sketch								
HATCH COVERS	Material								
	Thickness								
	How fitted								
	Bearing Surface								
Spacing of Cleats									
Number of Tarpaulins									

*Are wood fore and afters steel shod at all bearing surfaces?

Are battens and wedges efficient and in good condition?

Are tarpaulins in good condition and in accordance with rule requirements?

Are lashings provided in accordance with rule requirements?

Particulars of any special features:—

Endorsement at first survey and at surveys for renewal of Certificate:—

The fittings and appliances are in accordance with the particulars shown on this form (or as now modified) and are in good condition.



© 2020

Lloyd's Register Foundation