

SHIP Nos 716, 7, 8, 9, 20, 25, 26.

PROFILE & DECK.

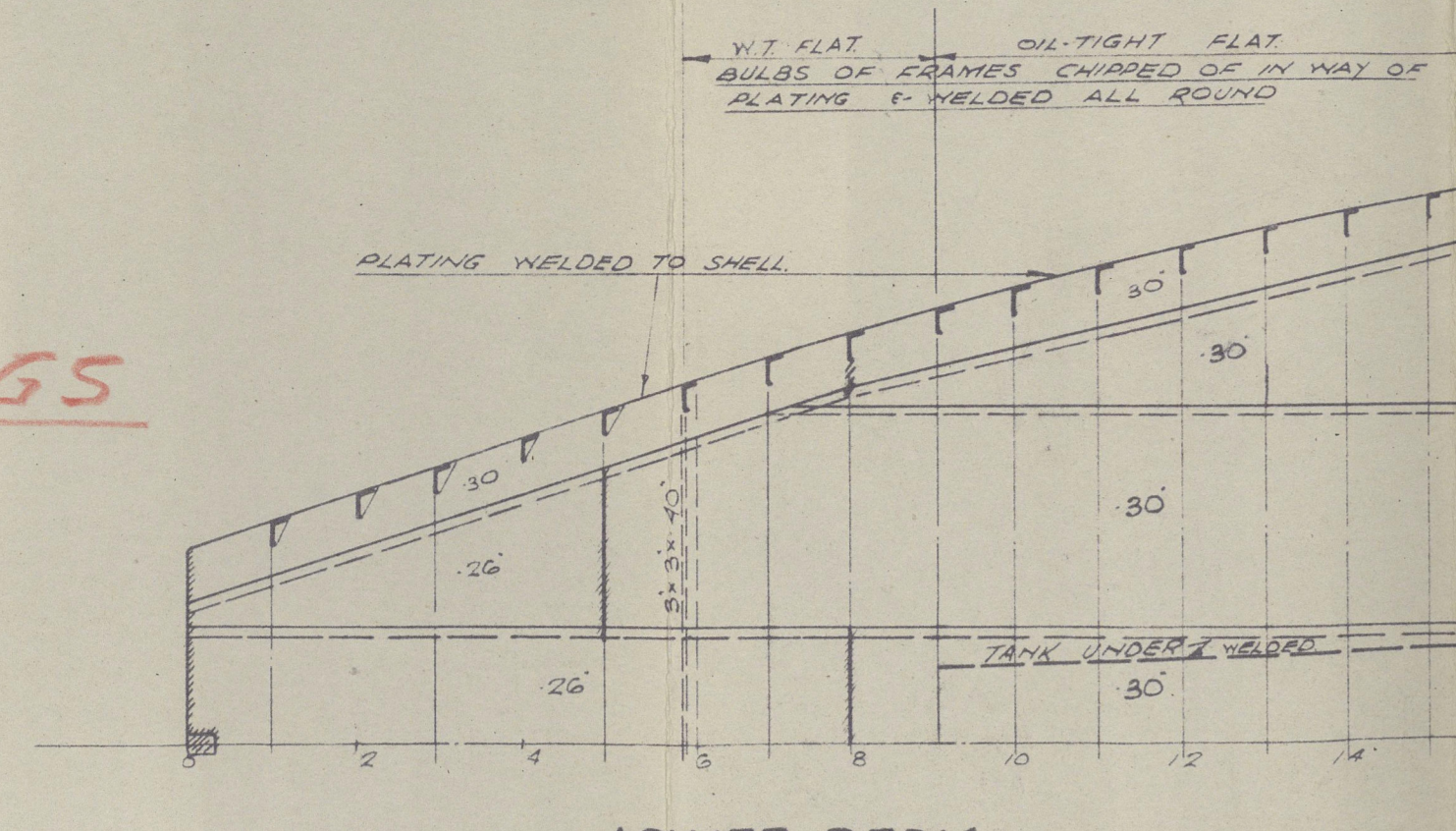
SCALE: 1/4" = 1 FOOT.

ALEX. HALL & Co. Ltd.  
ENGINEERS, ENGINEERS, ETC.  
10, YORK STREET,  
ABERDEEN, SCOTLAND.

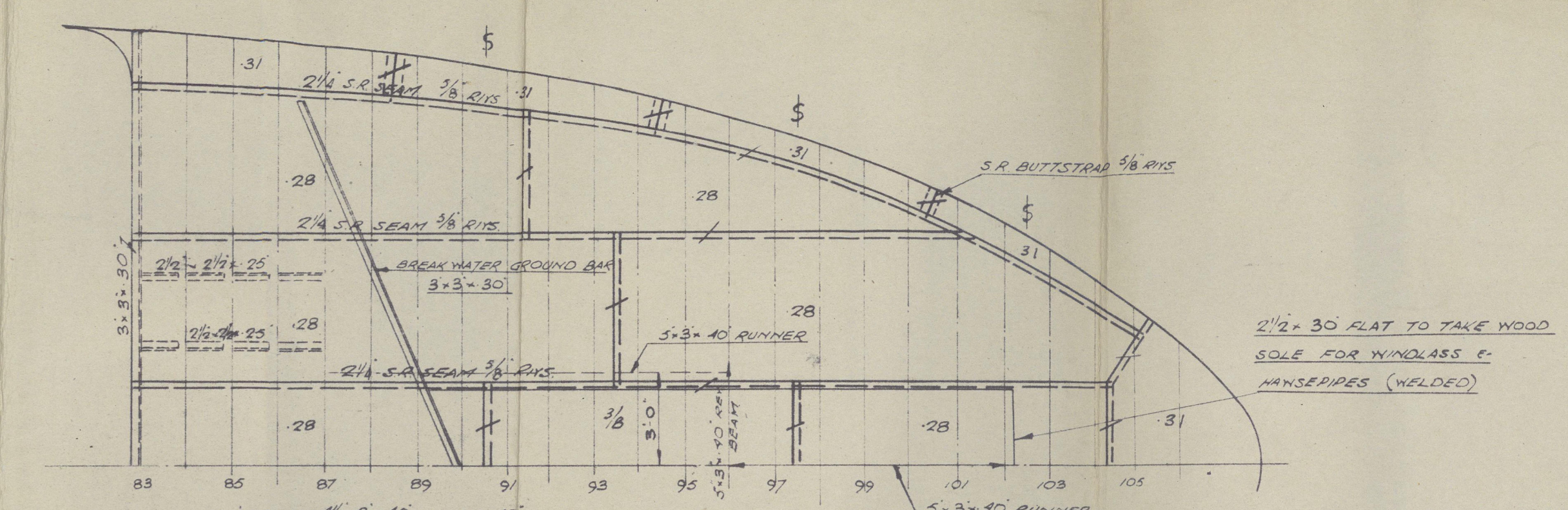
MINIMUM SCANTLINGS  
REQUESTED

RIVETING			
BEAMS TO STRINGERS & DECK PLATES	3/4"	5"	5"
DECK STRINGER ANGLE (BOTH PLAYS)	3/4"	5"	5"
OUTER BARS	3/4"	5"	5"
CASING GROUND BARS TO DECK (S-BATHED)	3/4"	5"	5"
CASING	3/4"	5"	5"
MIDSHIP DECKHOUSE GROUND BARS (2 JOINTS SPACED TO DECK)	3/4"	5"	5"
DECK BEAMS IN WAY OF 2 1/2" x 2 1/2" SPACING (BEAMS EVERY 20")	3/4"	5"	5"
6 RIBS BETWEEN BEAMS & 1/4" THICK BEAM	3/4"	5"	5"
DECK BEAMS IN WAY OF 2 1/2" x 2 1/2" SPACING (BEAMS AT 20")	3/4"	5"	5"
1/4" RIBS BETWEEN BEAMS & 1/4" THICK BEAM	3/4"	5"	5"
DECK BEAMS IN WAY OF 2 1/2" SPACING (BEAMS EVERY 20")	3/4"	5"	5"
5 RIBS BETWEEN BEAMS & 1/4" THICK BEAM	3/4"	5"	5"
DECK BEAMS IN WAY OF 2 1/2" SPACING (BEAMS AT 20")	3/4"	5"	5"
1/4" RIBS BETWEEN BEAMS & 1/4" THICK BEAM	3/4"	5"	5"
DECK BEAMS IN WAY OF 1 1/2" SPACING (ALL FRS)	3/4"	5"	5"
5 RIBS BETWEEN BEAMS & 1/4" THICK BEAM	3/4"	5"	5"
DECK BEAMS ELSEWHERE	3/4"	5"	5"
S.E. BATH STAIRS (DOUBLE STEPS)	3/4"	5"	5"
EDGE DECK BEAMS & 1/4" RIBS BETWEEN BEAMS & 1/4" THICK BEAM	3/4"	5"	5"
MIDSHIP DECK AT GROUND BARS TO DECK (2 JOINTS SPACED TO DECK)	3/4"	5"	5"

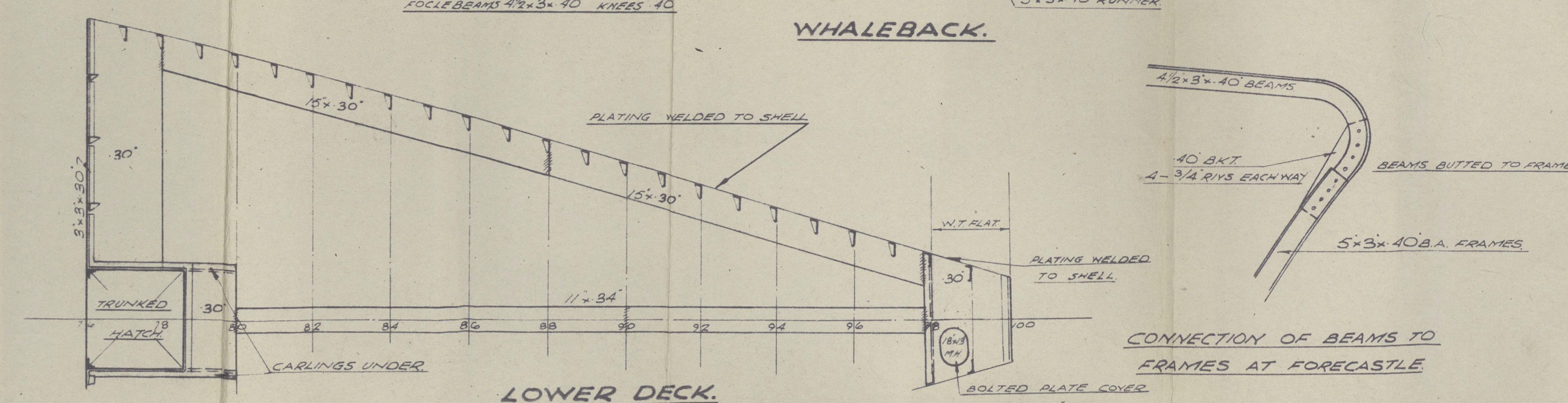
FOR PARTICULARS OF WELDING  
SEE WELDING PLAN



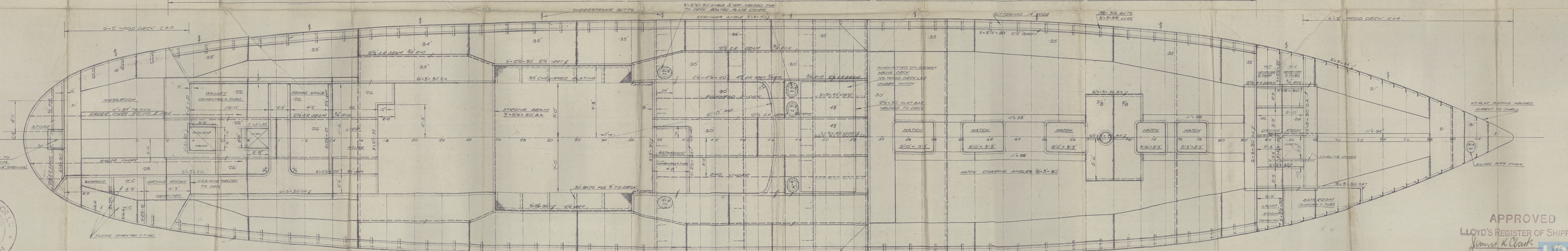
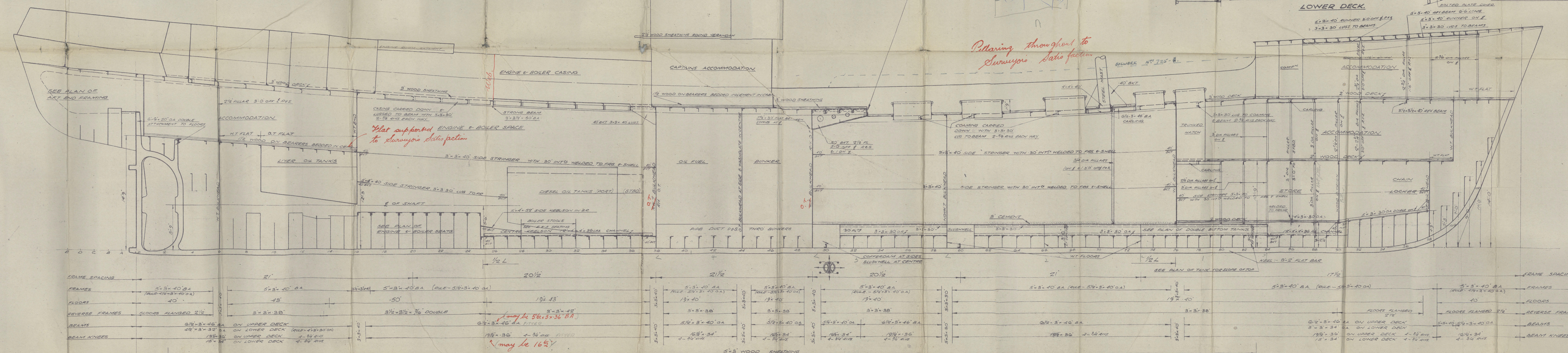
LOWER DECK



WHALEBACK



LOWER DECK



ALEX. HALL & Co. Ltd.  
ENGINEERS, ENGINEERS, ETC.  
10, YORK STREET,  
ABERDEEN, SCOTLAND.

APPROVED  
LLOYD'S REGISTER OF SHIPPING  
James & Clark  
DATE 15/1/16  
Lloyd's Register  
of Shipping

N<sup>os</sup> 716. 717. 718. 719. 720. 25, 26

A. HALL + COY LD. 725. 726.

PROFILE + DECKS.

716 = EGILL RAUDI. ★

ABN. RPT. 22127.

717 = ELLIDAEY.

ABN. RPT. 22174.

718 = ASKUR.

ABN. RPT. 22214.

719 = KARLSEFNI.

ABN. RPT. 22262.

720 KEFLVIKINGUR. n/n "VOTTOR"

Abn Rpt 22318.

COMPUTERISE

W.S. 599

2

WRECK

SEC

599.

725 URANUS.

Abn Rpt.



© 2020

Lloyd's Register  
Foundation

002401-002409-0119