

18.3.03

MIDSHIP SECTION.

S.S. No 120

TO CLASS 100 A.I. AT LLOYD'S STEEL.

SCALE 1/2 INCH = 1 FOOT.

DIMENSIONS:- 151'-9" B.P. x 25'-0" MLD x 12'-6" DEPTH MLD

$\frac{L}{B} = 11.57$ $\frac{L}{D} = 6.02$

EQUIPMENT.

2 BOWER ANCHORS EACH 10 1/4 CWT.	29 1/4 CWT.
1 ANCHOR.	8 3/4 " COLL. WT.
1 STREAM ANCHOR.	2 1/2 "
1 KEDGE ANCHOR.	1 1/4 "
165 FATHOMS	1/16" STUD CHAIN CABLE
60 "	1/16" STREAM CHAIN.
75 "	1 1/2" MANILLA TOWLINE.
90 "	5 1/2" HAWSER.

ERECTIIONS.

QUAR DK.	53.80.
BRIDGE	14.00.
FORECASTLE	27.25.
TOTAL.	94.75.

NUMERALS.

1/2 GIRTH.	23.30.
1/2 BREADTH.	12.50.
DEPTH.	13.02.
1ST NUMERAL.	48.82.
2ND NUMERAL.	7355.70.
$\frac{7355.70}{8} \times \frac{94.75}{150.67} = 571.90$	
EQUIP ^{MT} NUM.	7927.60.

SECTION AT FORE END OF BOILER SPACE.

ROUND OF BEAM FOR ALL DECKS 6 1/4 INCHES.

QUAR. DK. NUMERALS.

1/2 GIRTH.	27.05.
1/2 BREADTH.	12.50.
DEPTH.	16.77.
1ST NUMERAL.	56.32.
2ND NUMERAL.	8485.73.

RIVETTING

ALL BUTTS OF SHELL EXCEPT GARB^B AND BILGE STRAKES IN WAY OF RUBBER PLATE TO BE LAPPED.

THE LAP BUTTS TO BE TREBLE RIVETTED FOR 1/2 LEN. AMIDSHIPS AND WHERE OVER RULE WIDTHS *outside of d. Quad where over rule width within 1/2 d.* BUTTS OF GARB^B STRAKE AND BILGE STRAKE IN WAY OF RUBBER PLATE STRAPPED AND DOUBLE RIVETTED WITH STRAPS 1/2" THICKER THAN THE PLATES THEY CONNECT. TREBLE WHERE OVER RULE WIDTHS. DECK STRINGER BUTTS. LAPPED AND DOUBLE RIVETTED. DECK PLATING BUTTS. LAPPED AND DOUBLE RIVETTED FOR 1/2 LEN. AMIDSHIPS. SINGLE AT ENDS.

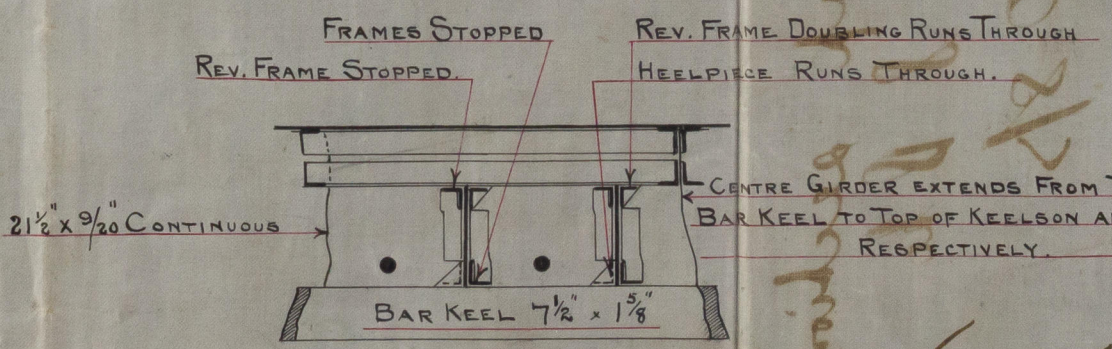
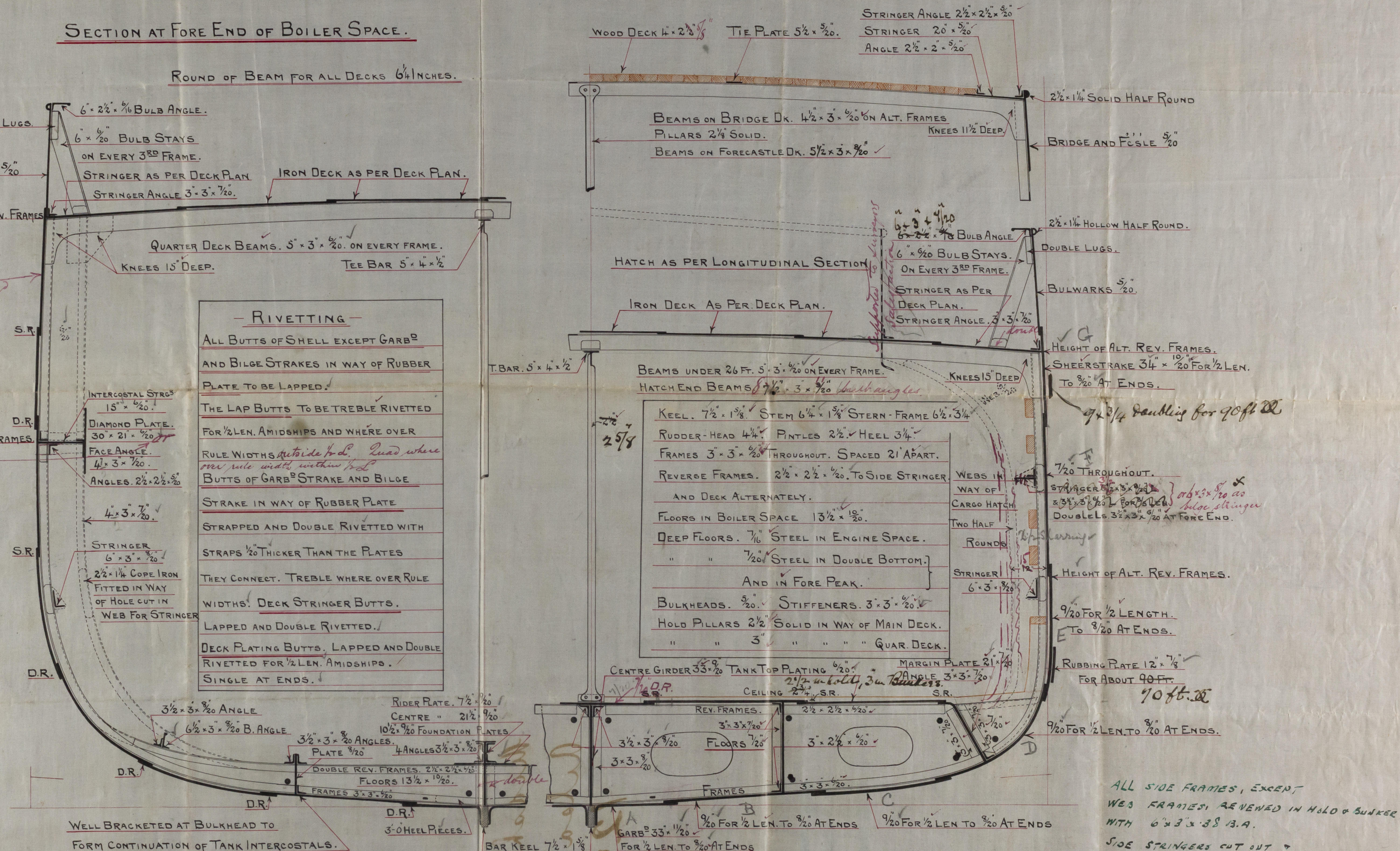
RIVETTING OF DOUBLE BOTTOM

BUTTS OF CENTRE GIRDER TO BE FITTED WITH DOUBLE STRAPS DOUBLE RIVETTED.

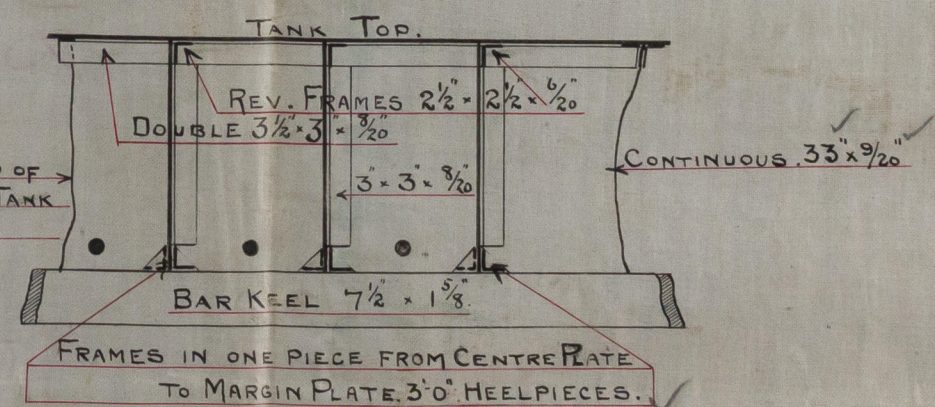
BUTTS OF TANK CENTRE STRAKE AND MARGIN PLATE LAPPED AND DOUBLE RIVETTED.

BUTTS OF TANK TOP PLATING LAPPED AND SINGLE RIVETTED.

ALL TANK SEAMS. SINGLE RIVETTED.



ARRANGEMENT IN BOILER SPACE
SEE ALSO LONGITUDINAL SECTION
FLOORS 13 1/2" x 1 1/2"



LONGITUDINAL SECTION IN WAY OF DOUBLE BOTTOM.

ALL SIDE FRAMES, EXCEPT WEB FRAMES, REVENED IN HOLD & BUNKER WITH 6" x 3" x 3/8" I.A.

SIDE STRINGERS CUT OUT & NOT REPLACED.

18.3.03

120 8/5

MIDSHIP SECTION

© 2020
Lloyd's Register
002374-002384-0151