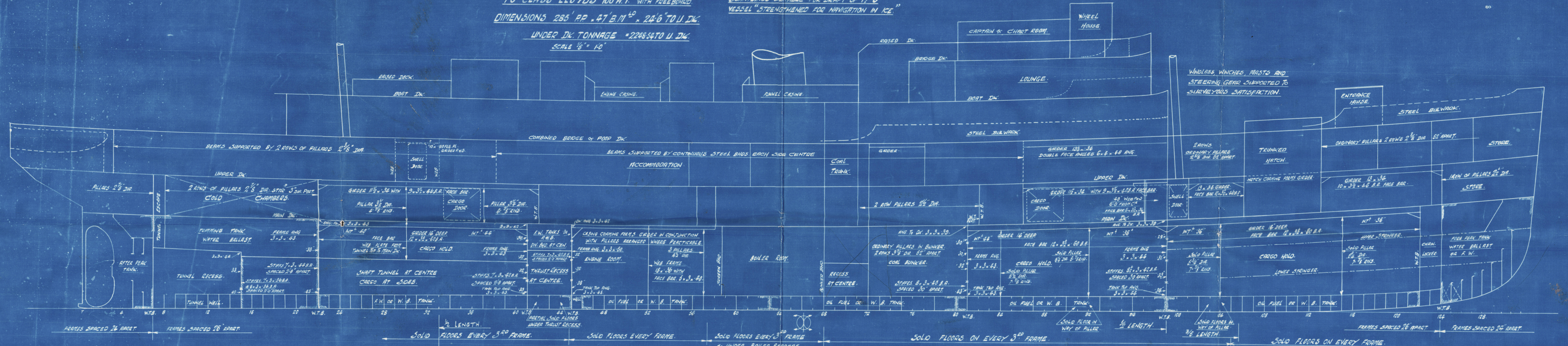


# S.S. "NORTHLAND"

## PROFILE AND DECK PLANS.

TO CLASS LLOYDS 100 A.1. "WITH FREEBOARD"  
DIMENSIONS 285' AP. 47' B.M. 24'6" T.U. D.K.  
UNDER D.K. TONNAGE 2248.5470 U. D.K.  
SCALE 1/8" = 10'

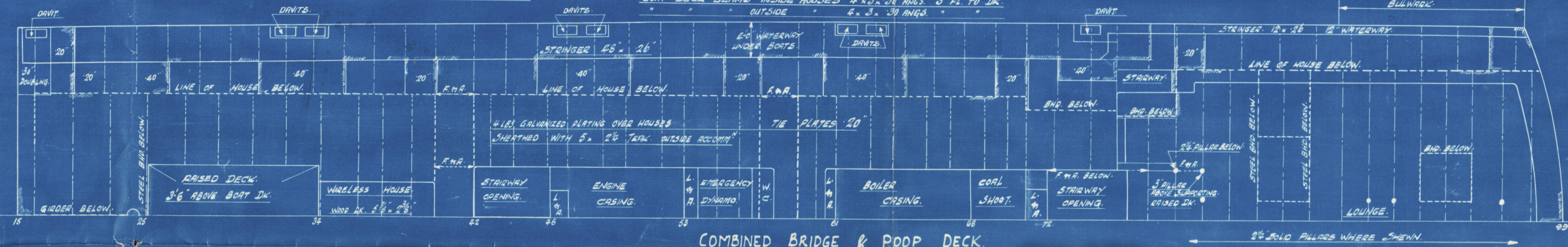
SCANTLING SUITABLE FOR DRAFT OF 17'6"  
VESSEL STRENGTHENED FOR NAVIGATION IN ICE



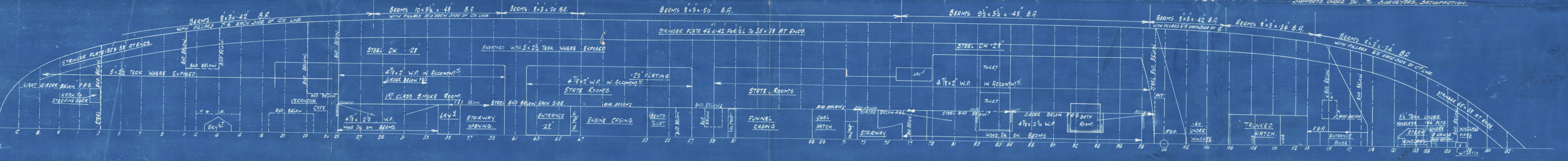
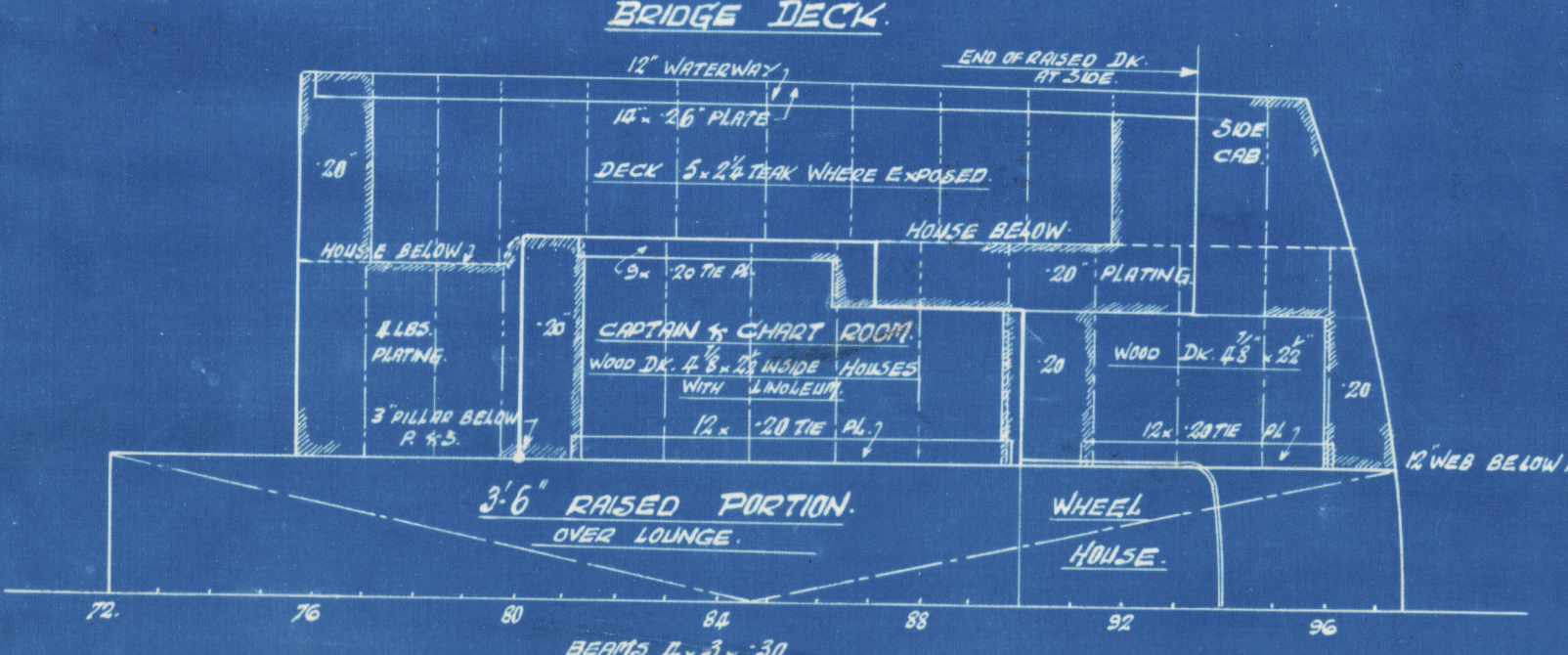
W.T. BULKHEADS TO CONVENTION REQUIREMENTS  
ALL BULKHEADS EXTENDS TO UPPER D.K.  
TWIN D.K. PLATING MAIN TO UPPER D.K. 26"  
PLATING IN HOLD IN EACH CASE AS ON PLAN  
THIN D.K. STIFFS ALL 4" x 8" 3/4" APART 24" COLLISION AND  
RIV. TO BOUNDARY BARS ONLY, NO B.T.S.  
D.K. BOUNDARY BARS IN TWIN D.K. 3" x 3/4"  
HOLD STIFFS 4" FRAME ANGLES IN EACH CASE AS ON PLAN

SKETCH OF GIRDER UNDER  
BOAT D.K. FRS 15 TO 24  
4" x 8" 3/4" (4" HOOD)  
4" x 8" 3/4" INTER. B.C.  
VERTICAL FLANGE INTERCOSTAL

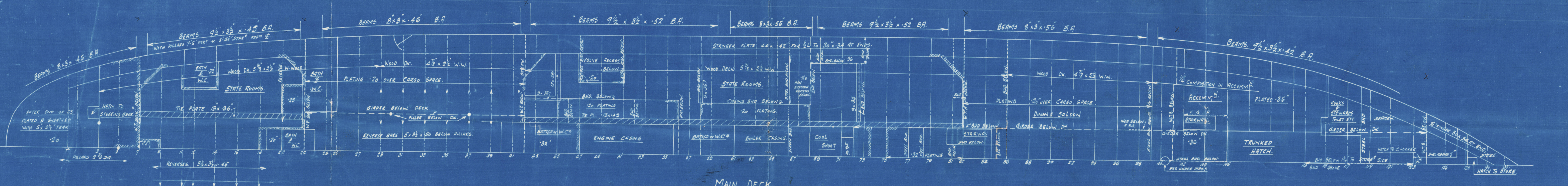
### BOAT DECK



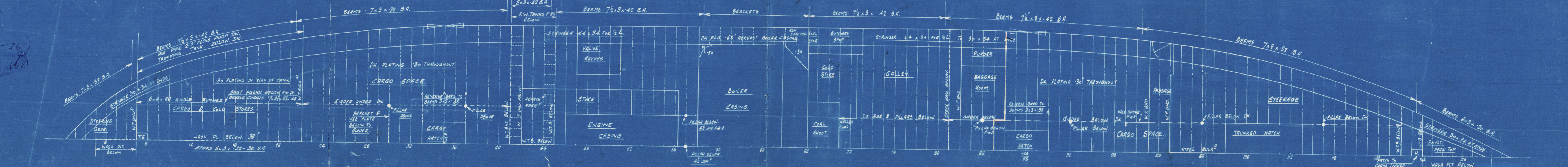
### COMBINED BRIDGE & POOP DECK



### UPPER DECK



### MAIN DECK



33894  
21-4-26  
GW



Messrs Swan Hunter & Wigham Richmond

Nº 1214

Profile & Decks as built

---

S. S. NORTHLAND.  
NEWCASTLE ON TYNE.

Report No. 80372.

---

New Northland

RETAIN



© 2020

Lloyd's Register  
Foundation

002374-002384-0099