

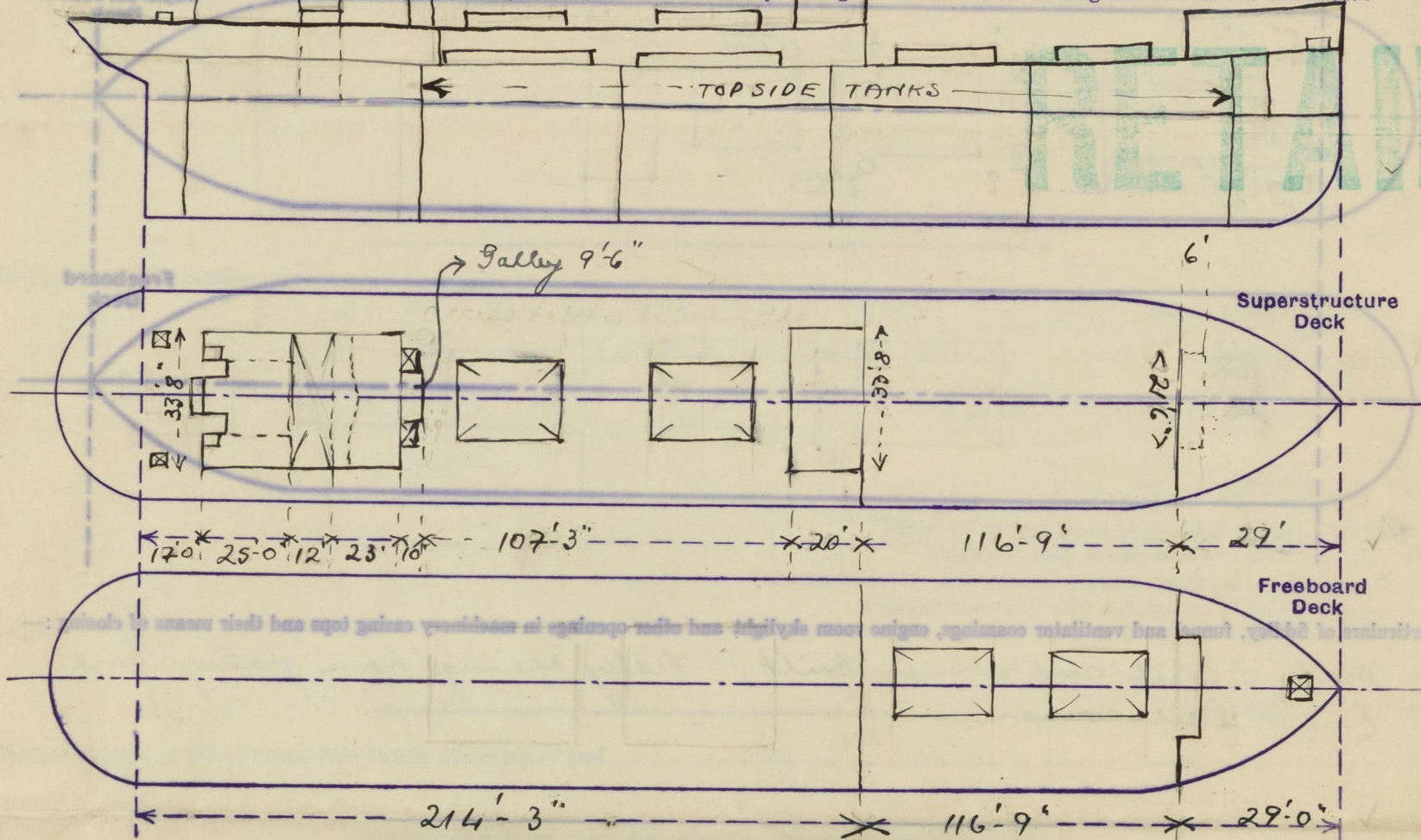
Lloyds Register of Shipping.

Index No. 38886  
(For London Office only)

SURVEYS FOR FREEBOARD.  
(CONDITIONS OF ASSIGNMENT.)

Ship's Name SYGNA "BHARATMATA" Port of Survey Bombay  
Official Number \_\_\_\_\_ Surveyor's Signature Am Ruddle  
Nationality and Port of Registry British Bombay Date of Survey December 1946

Disposition and dimensions of superstructures, trunks, deckhouses and machinery casings to be inserted in the diagrams and tabular statement:—

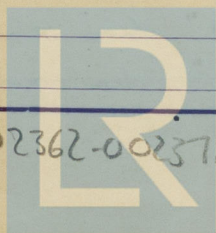


Particulars of Superstructures, Trunks, Casings, Deckhouses.

	Coaming	Plating	Stiffeners	Spacing	End Attachments of Stiffeners	Size of Openings	Height of Sills	Height of Casings
Poop Bulkhead .. .. .								
Raised Quarter Deck Bulkhead ..								
Bridge, After Bulkhead .. ..								
Long Bridge, Forward Bulkhead .. ..	.44	.44	8x32x2	2'-5"	Brackets T.O.	20'x2'x2'-6" 10'4'5"x2'-6"	2'-3" 2'-0"	7'-5"
Forecastle Bulkhead .. ..	.26	.26	Flange plates	2'-9"	None	5'-0"x3'-0"	2'-0"	7'-5"
Trunk, Aft .. .. .								
Trunk, Forward .. .. .								
Exposed Machinery Casings on Freeboard or Raised Quarter Decks .. .. .	AT SADDLE BACK .28	.28	Flanged plates 4"	3'-10"	None	5'-4"x2'-0"	1'-3"	7'-5"
Exposed Machinery Casings on Superstructure Decks .. .. .	FORD END RIDLEY .32	.32	3 1/4 x 3 1/4 x 5/16	3'-0"	Brackets at top	None	None	7'-5"
Machinery Casings within Superstructures not fitted with Class I Closing Appliances .. ..								
Deckhouses on Flush Deck Ships ..								

Particulars of Closing Appliances (state if capable of being manipulated from both sides).

Poop Bulkhead .. .. .	
Raised Quarter Deck Bulkhead ..	
Bridge, After Bulkhead .. ..	
Long Bridge, Forward Bulkhead ..	Two steel bolted doors - holes through bulkhead. One hinged steel door to store door only. Hinged wooden doors 2 inches thick.
Forecastle Bulkhead .. ..	
Exposed Machinery Casings on Freeboard or Raised Quarter Decks .. .. .	
Exposed Machinery Casings on Superstructure Decks .. .. .	Hinged steel doors.
Machinery Casings within Superstructures not fitted with Class I Closing Appliances .. ..	
Deckhouses on Flush Deck Ships ..	

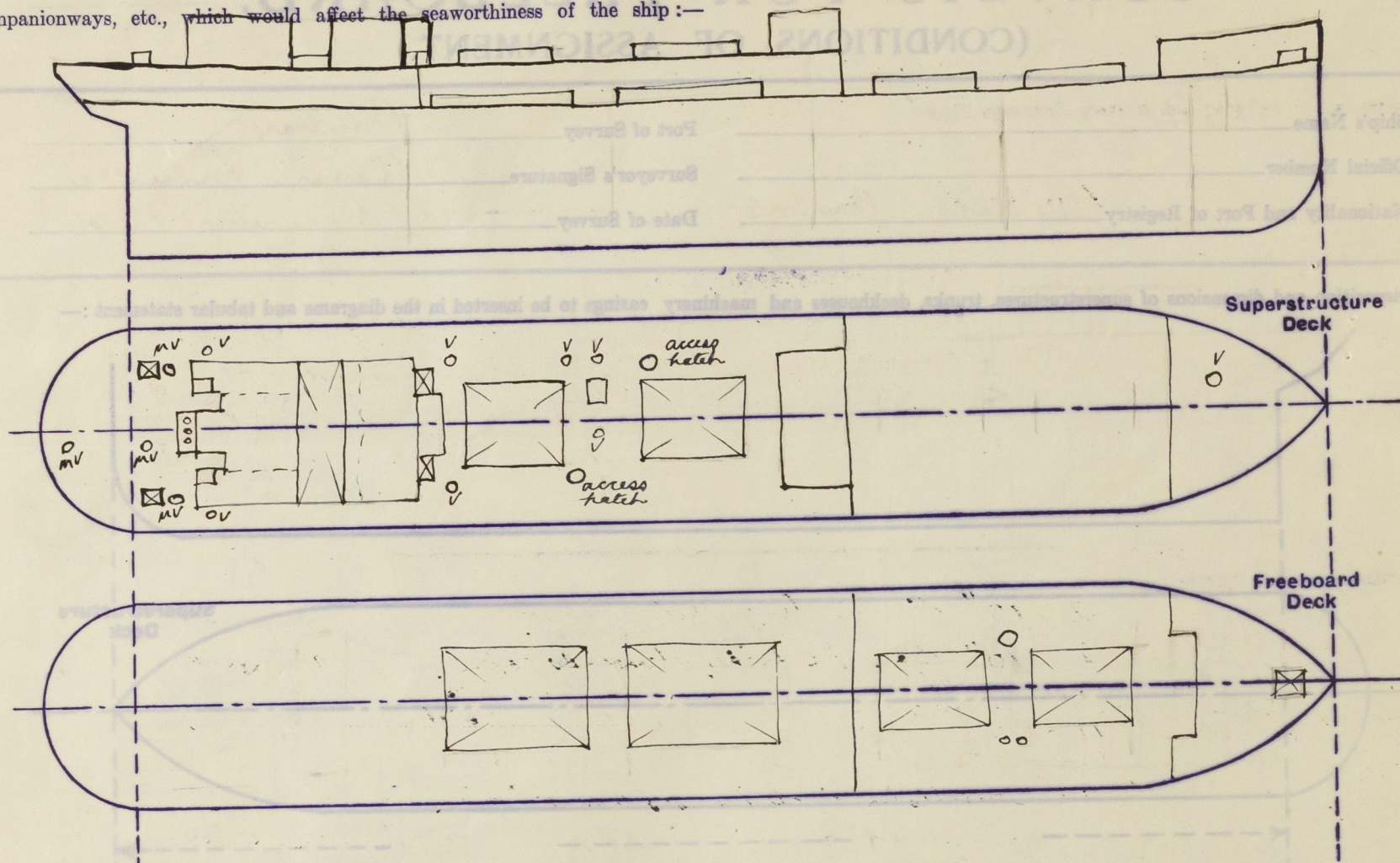


© 2020



# PARTICULARS OF PROTECTION TO OPENINGS, ETC.

The following diagrams should be used to indicate the positions of cargo and coaling hatchways, gangway, cargo and coaling ports, ventilators, companionways, etc., which would affect the seaworthiness of the ship:—



Particulars of fiddle, funnel and ventilator coamings, engine room skylight and other openings in machinery casing tops and their means of closing:—

Made of steel and strongly built. Fidler openings have gratings and hinged steel covers.

Particulars of Flush Bunker Scuttles:—

None

Particulars of Companionways:—

One to Stewards quarters between nos 3 & 4 hatches made of steel 3'0" x 4'2" with door made of wood, heavily built 3'7" x 2'6" x 1'3" sill. Two at after end of poop house with heavy wooden doors 5'0" x 2'0" x 9" sill (companion enclosed in casing).

Particulars of Ventilators in exposed positions on freeboard and superstructure decks:—

- 1 on fore deck 1'3" dia x 1'10" ht.
- 1 on fore well deck 2'2" x 4'0" (stiffened)
- 2 " " 1'6" x 2'6"
- 2 on long bridge dk 1'6" x 2'0"
- 1 " " 1'6" x 2'6"
- 1 " " 2'2" x 1'7"
- 1 " " 9" x 3'0"
- 4 " " 8" x 1'0" (mushroom type)
- 2 " " 9" x 2'0"

Also on bridge deck: 4 gooseneck vent on pipe to bunkers, 4" dia x 1'3" high, with plugs & canvas covers.

all ventilators fitted with closing appliances and having thickners according to Rule requirements.

Particulars of Air Pipes in exposed positions on freeboard, raised quarter, or superstructure decks:—

- 2 on fore well deck 5 1/2" dia x 3'0" high
- 2 inside forecabin each 4" dia, one 2'0" high, one 1'6" high

On Long Bridge:

- 2 at 5" dia x 2'0" ht.
- 2 at 5" dia x 1'6" "
- 4 at 4" dia x 1'4" "
- 1 at 3" dia x 1'6" "

wood plugs with chains & canvas covers.

Particulars of Gangway Cargo and Coaling Ports:—

None

Particulars of Scuppers and Sanitary Discharge Pipes:—

all sanitary discharges are from spaces above the freeboard deck and are fitted with brass non-return valves. Deck scuppers, cast steel pipes.

Mangan  
stainless

Particulars of Side Scuttles:—

2 - 10" dia in long bridge front  
2 - 10" dia, portside, towards cabin.  
portside in long bridge space between nos 3 & 4 hatches  
11 - 10" dia at after end of long bridge space  
all with hinged deadlights  
All scuttles in deck houses are 12" dia. without deadlights  
Windows in saloon house front with portable steel shutters.  
Windows in saloon house front with portable steel shutters.

Vertical distance of Sill of lowest Side Scuttle above top of keel

33'-3"

Particulars of Guard Rails:—

On long bridge: height 3'-6" with three tiers of rails and stanchions spaced 4'-0"

Particulars of Gangways, Lifelines, etc.:—

Provision made by strong end attachments and ropes.

## Particulars of Freeing Arrangements.

	Length of Bulwark	Height of Bulwark	Size of Freeing Ports	Number each side	Area each side	Rule area each side
After Well						
Forward Well	116'-9"	3'-6"	3'-2" x 1'-7"	5	25 sq ft	23 sq ft

State position of each freeing port (F. and A. position and height above deck edge) After Well:— Forward Well:— From fore: 9'-4", 29'-11", 24'-0", 24'-0", 15'-6", 14'-0"

State whether the freeing ports are fitted with shutters, bars, or rails, and give particulars of such:— 3 horizontal rails

Additional area where sheer is less than standard.



PARTICULARS OF PROTECTION TO OPENINGS, ETC.

HATCHWAYS ON FREEBOARD AND SUPERSTRUCTURE DECKS.									
In Fore and Aft Saddle Bunkers at aft end access									
Description of Hatchway	No 102	No 344	No 344	No 344	No 344	No 344	No 344	No 344	No 344
Dimensions of Hatchway	24'0" x 20'	36' x 30'	24' x 20'	24' x 20'	24' x 20'	24' x 20'	24' x 20'	24' x 20'	24' x 20'
COAMINGS	Height above Deck	2'-6"	1'-6"	1'-6"	1'-6"	1'-6"	1'-6"	1'-6"	1'-6"
	Thickness	.44	.38	.38	.38	.44	.38	.38	.38
	Stiffeners	8' x 3' B/A	none	none	none	none	none	none	none
	Brackets, Stays	Dr. .44	none	none	none	none	none	none	none
HATCH BEAMS	Number	4	3	3	3	3	3	3	3
	Spacing	4'-10"	9'-0"	9'-0"	9'-0"	9'-0"	9'-0"	9'-0"	9'-0"
	Scantling and Sketch	4' x 3' x .44	3' x 3' x .38	3' x 3' x .38	3' x 3' x .38	3' x 3' x .38	3' x 3' x .38	3' x 3' x .38	3' x 3' x .38
	Bearing Surface	3"	22" ends 39" middle	22" ends 39" middle	22" ends 39" middle	22" ends 39" middle	22" ends 39" middle	22" ends 39" middle	22" ends 39" middle
FORE AND AFTERS	Number	none	5	5	5	5	5	5	5
	Spacing	none	5'-0"	5'-0"	5'-0"	5'-0"	5'-0"	5'-0"	5'-0"
	Unsupported Lengths	none	9'-0"	9'-0"	9'-0"	9'-0"	9'-0"	9'-0"	9'-0"
	Scantling* and Sketch	none	6 1/2"	6 1/2"	6 1/2"	6 1/2"	6 1/2"	6 1/2"	6 1/2"
HATCH COVERS	Material	Wood	Wood	Wood	Wood	Wood	Wood	Wood	Wood
	Thickness	2 1/2"	2 1/2"	2 1/2"	2 1/2"	2 1/2"	2 1/2"	2 1/2"	2 1/2"
	How fitted	Fra	Atk	Atk	Atk	Atk	Atk	Atk	Atk
	Bearing Surface	3"	3"	3"	3"	3"	3"	3"	3"
Spacing of Cleats	24"	24"	24"	24"	24"	24"	24"	24"	24"
Number of Tarpaulins	2	1	1	1	1	1	1	1	1

\*Are wood fore and afters steel shod at all bearing surfaces? ☒ Yes

Are battens and wedges efficient and in good condition? ☒ Yes

Are tarpaulins in good condition and in accordance with rule requirements? ☒ Yes

Are lashings provided in accordance with rule requirements? ☒ Yes

Particulars of any special features:—

Endorsement at first survey and at surveys for renewal of Certificate:—

The fittings and appliances are in accordance with the particulars shown on this form (or as now modified) and are in good condition.

Particulars of Freeing Arrangements					
Length of Hatch	Height of Hatch	Size of Freeing Ports	Number each side	Area each side	Ratio area each side
Forward Well					
Aft Well					

State position of each freeing port (T and A position and height above deck edge) — Forward Well: — Aft Well: —

State whether the freeing ports are fitted with shutters, bars, or rails, and give particulars of each: —

Additional area where there is less than standard: —