

110/05
STAMP
18/2/20

EQUIPMENT.

LONGITUDINAL NO	7415-625
R OR DK	98-25 105-66 x 35
BRIDGE D	11-00 x 7-3/4
FOGLE D	25-00 x 7-3/4
CASING	40-66 x 7-1/2
EQUIPMENT N°	8141-265

2 BOWERS STOCKLESS	16 3/4 CWTs
1	14 1/2 "
1 STREAM ANCHOR (EX STOCK)	4 3/4 "
1 KEDGE	() 2 1/4 "
155 FMS	STUD LINK CABLE 1 1/16
60	3 STEEL WIRE.
75	3 1/2 HEMP OR 2 3/4 STEEL WIRE.
90	6 HAWSER OR 2 1/4
90	4 WARP OR 2

PLAN No. 4043
FOR ENCLOSURE TO
Messrs. J. & W. G. S. Ltd.
SHIPPERS
DATE 11/2/20

MIDSHIP SECTION.

N° 701-2.

STEEL SCREW STEAMERS.
CLASS 100.A.I. AT LLOYDS.

DIMENSIONS:- 175-0 B.P. x 29-0 EX x 13-6 MLD.

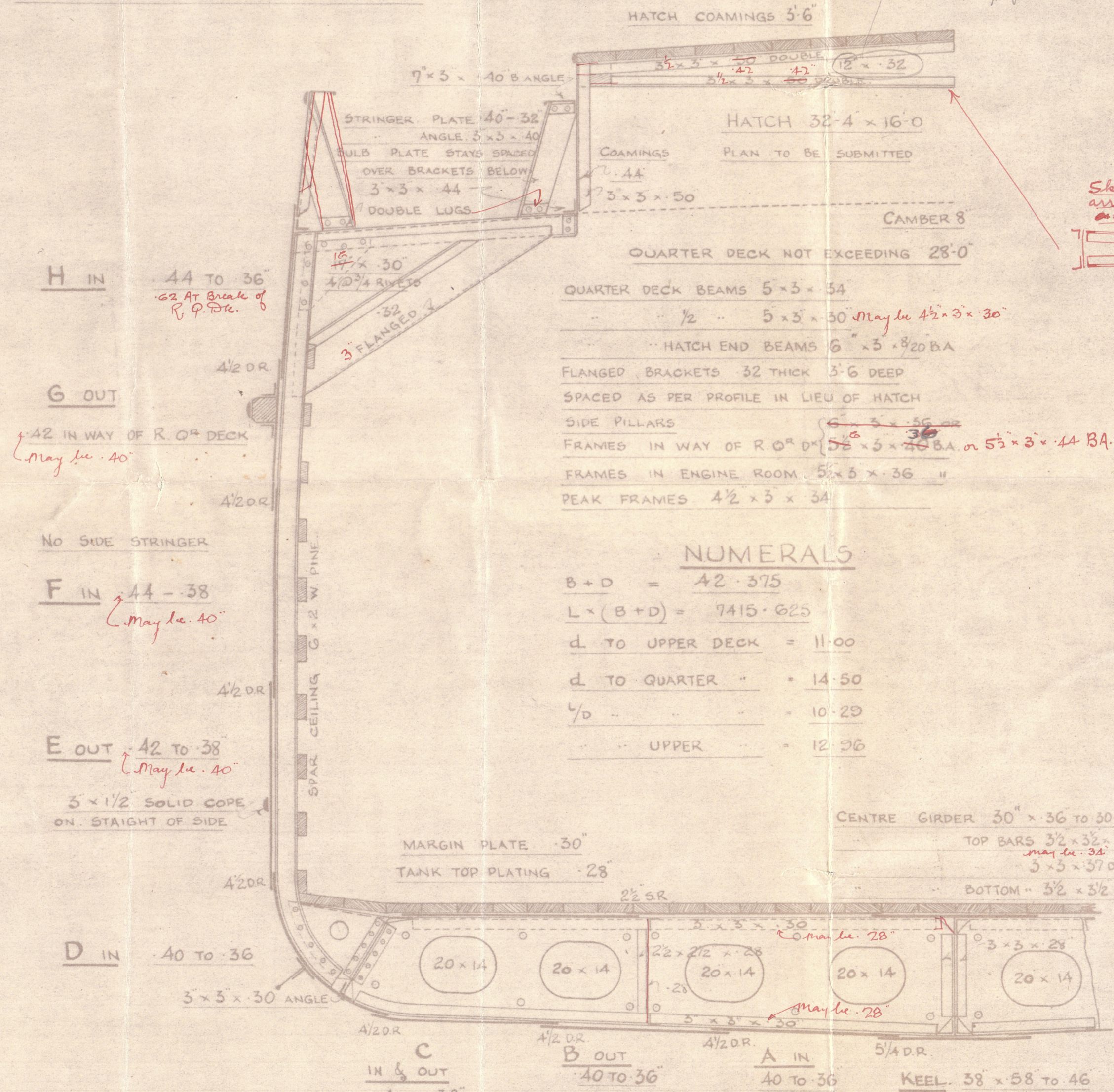
SCALE 1/2" = ONE FOOT.

RIVETING

BUTTS OF KEEL STRAPPED & TREBLE RIVETED FORE & AFT	
ABC & D OVERLAPPED & TREBLE RIVETED FOR 2 L. DOUBLE AT ENDS	
E STRAKE	DOUBLE FORE & AFT
F	TREBLE INWAY OF MAIN DECK DOUBLE AT FORE END
F	DOUBLE QUARTER
G	TREBLE FORE AND AFT QUADRUPLE AT BREAK
H	INWAY OF RAISED Q ² DECK OVERLAPPED & TREBLE RIVETED DOUBLE AT END
BULWARKS STRAPPED & SINGLE RIVETED	
STRINGER PLATES OVERLAPPED & TREBLE RIVETED DOUBLE AT ENDS	
DECK PLATES DOUBLE RIVETED FOR 1/2 L. SINGLE AT ENDS	
ALL SHELL SEAMS OVERLAPPED & DOUBLE RIVETED EXCEPT TOP EDGES OF MAIN AND QUARTER DECK SHEERSTRAKE WHICH ARE TO BE SINGLE RIVETED	
RIVETS THRO' FRAMES TO SHELL 7 DIAS APART EXCEPT INWAY OF BOTTOM FORWARD OF 1/2 LENGTH & IN FORE PEAK WHERE THEY ARE TO BE SPACED 5 1/2 DIAS APART	
TANK TOP CENTRE STRAKE BUTTS D.R. REMAINDER D.R. FOR 1/2 L. SR. AT ENDS	

In way of break the butts of the raised quarter deck strakes below and two to each end treble riveted.

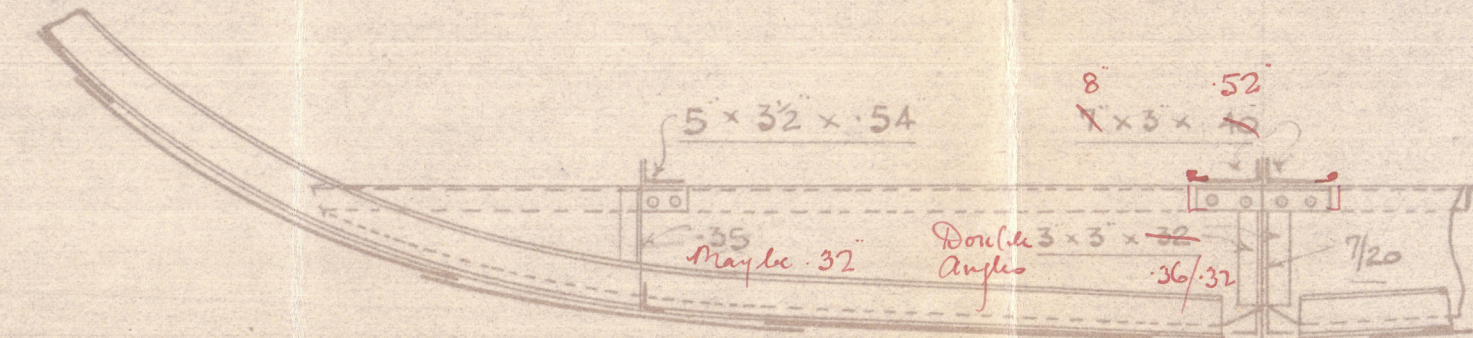
13 1/2 x 3 1/2 x 3 1/2 x 3 1/2 as approved 14.4.20 separate hatch plan.



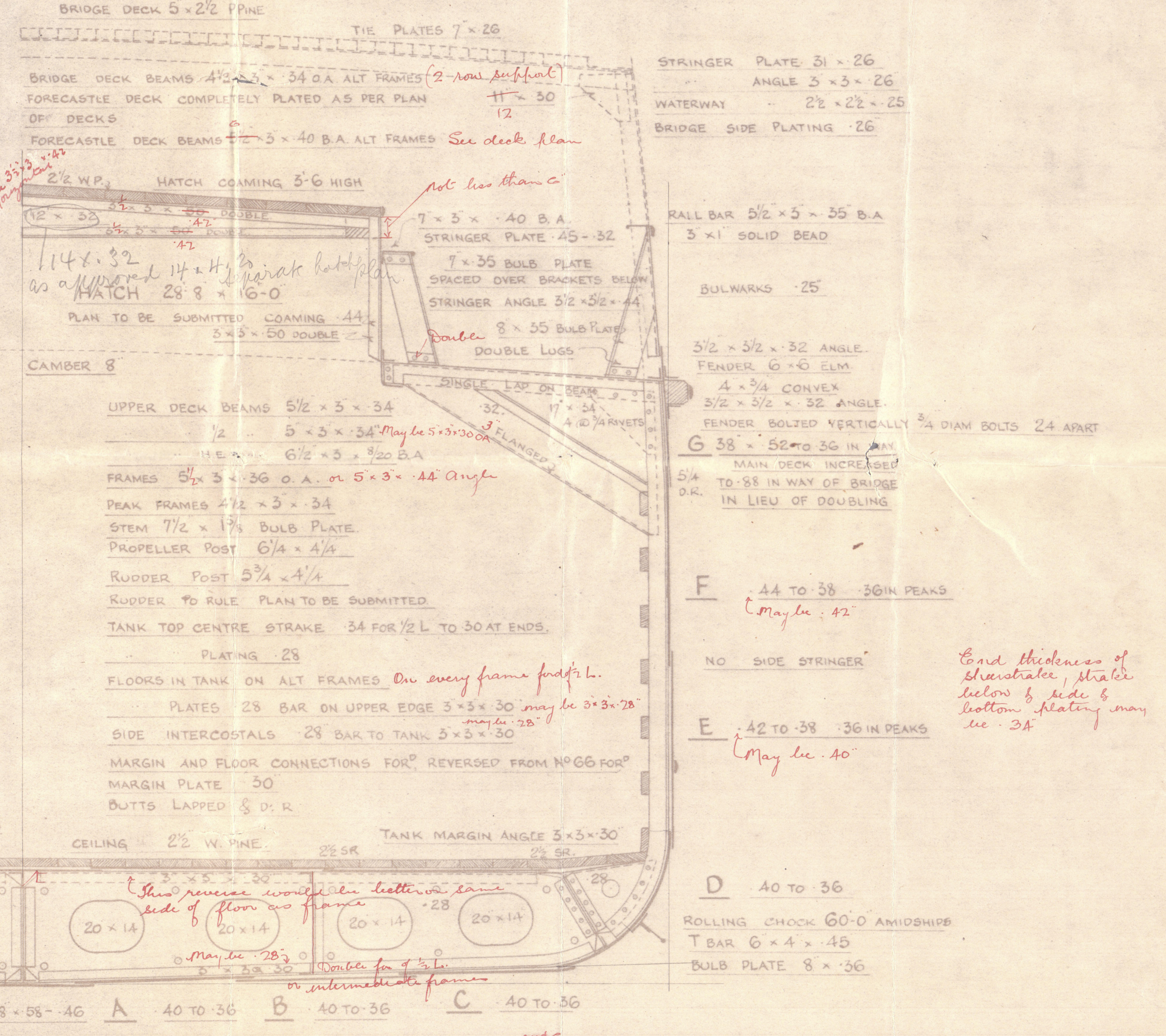
SECTION THRO QUARTER DECK

BULB ANGLES SHEWN 5 1/2 x 3 INSTEAD OF RULE
SIZE ARE ALTERED TO EXPEDITE DELIVERY OF MATERIAL

FLOORS IN ENG SPACE 36 REVERSE FRs 3 1/2 x 3 1/2 x 46 SINGLE.
B 10 x 42 3 1/2 x 3 1/2 x 46

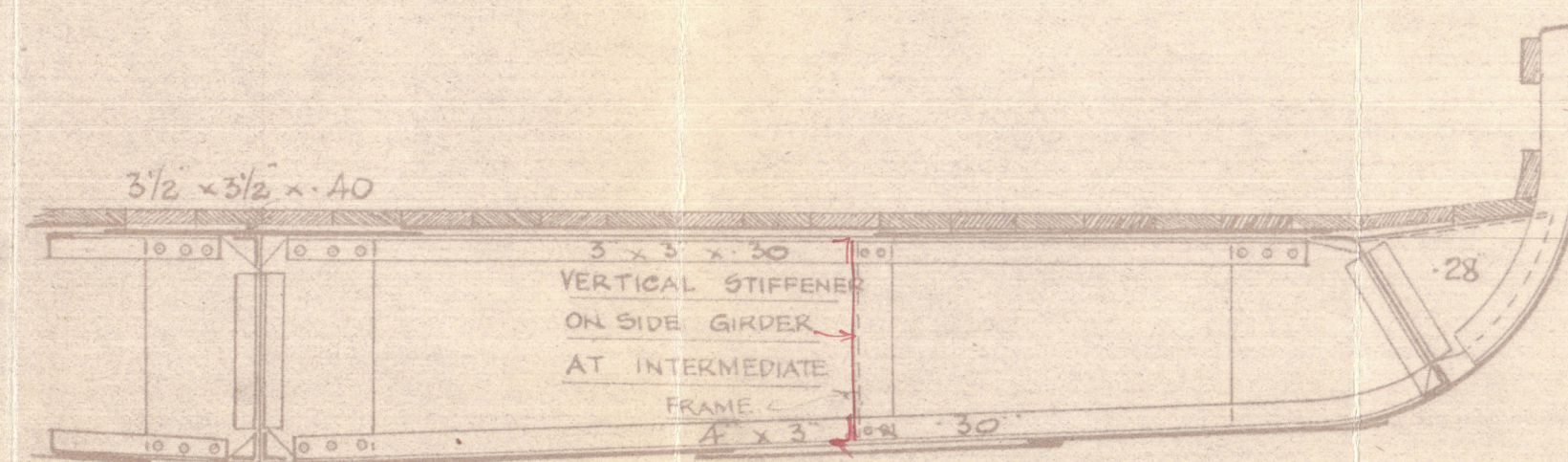


SECTION THRO ORDINARY FLOORS



SECTION THRO MAIN DECK

NOTE STRAKES A & B MIDSHIP THICKNESS CARRIED TO RULE
POSITION OF COLLISION BULKHEAD



SECTION AT INTERMEDIATE FRAMES IN TANK

signed. G. B. S.
18/2/20

Nos 701-2

Cochrane & Sons Ltd

Copy of
Approved
Midship Section

PLAN No.
FOR ENCLOSURE TO
<u>Gen Box</u>
<u>3079.</u> FROM
COCHRANE & SONS, LTD
SHIPBUILDERS, SELBY
DATE

RETAIN

S. S. Kenrix.

Aug 32 8 30.



© 2020

Lloyd's Register
Foundation

002362 002373-0097