

N° 55 RUDDER FRAME

OF FORGED IRON TO PASS BRITISH CORPORATION.

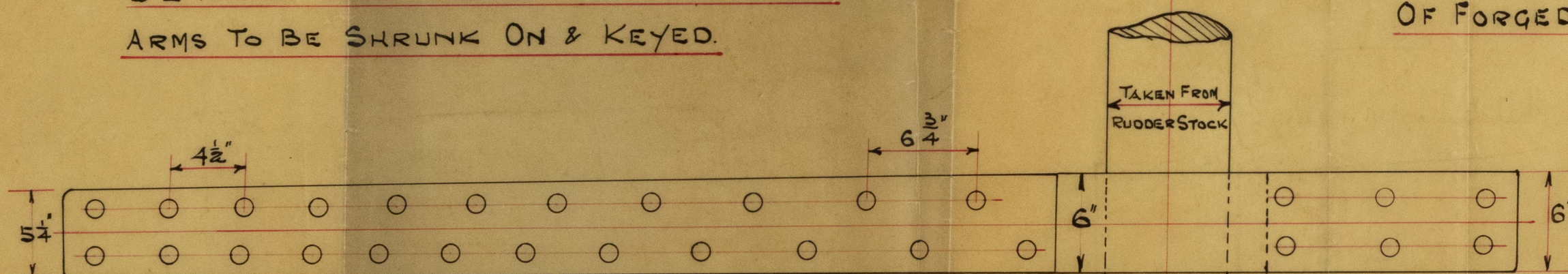
SCALE $\frac{1}{2}$ " = 1 FOOT

-1 SEP 1912

Approved 37.
in letter 9.9.12

DETAIL OF ARMS. $\frac{1}{2}$ " SCALE

ARMS TO BE SHRUNK ON & KEYED.



HOLES 1 3/16" DIAM COUNTERSUNK SPACED 4 1/2" TO 6 3/4" C/C TO C/C

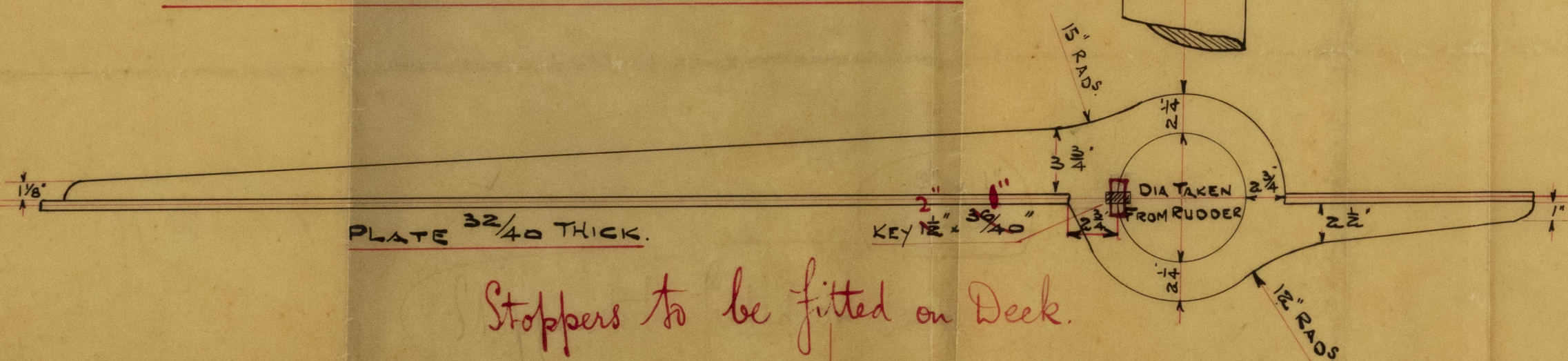
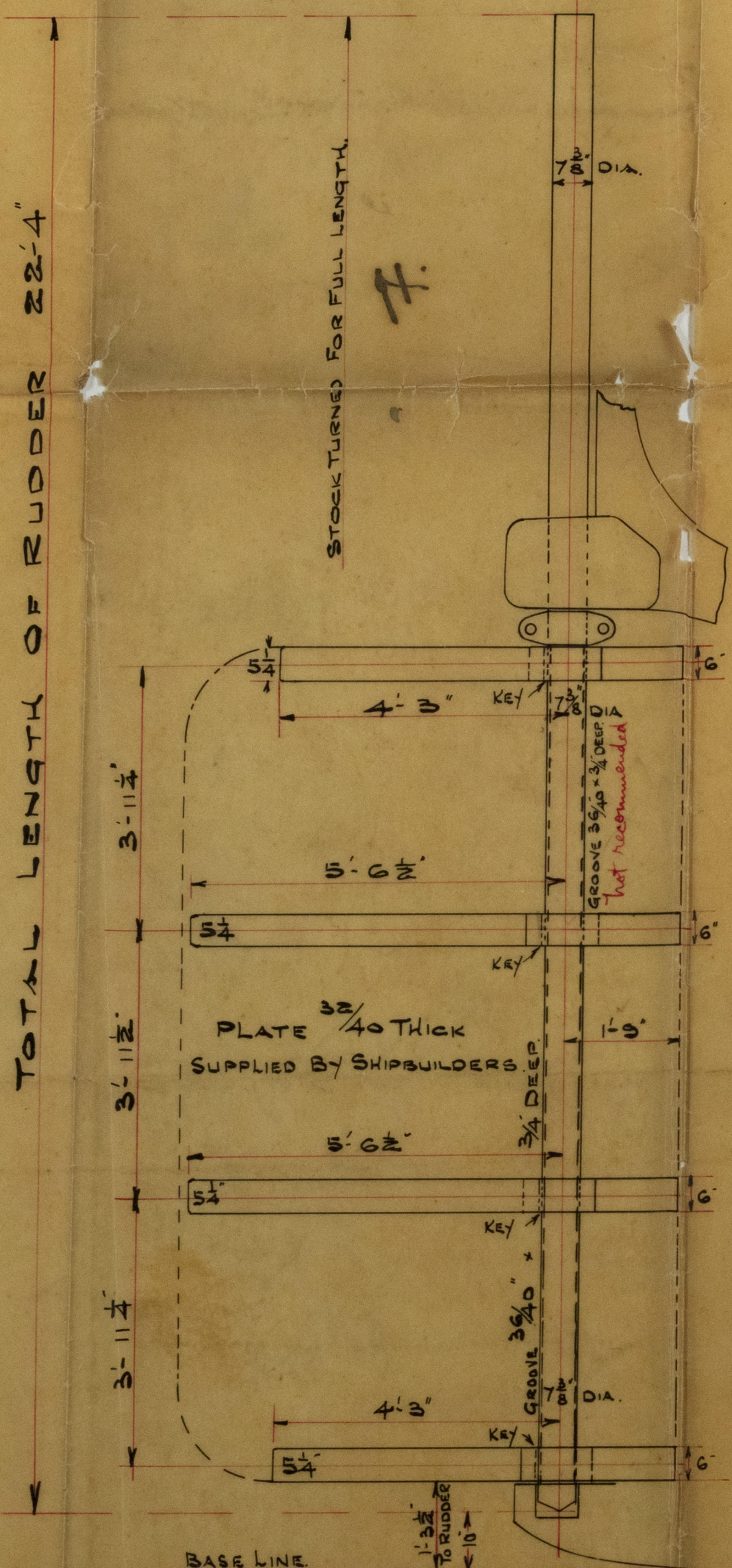


PLATE 32/40 THICK.

Stoppers to be fitted on Deck.

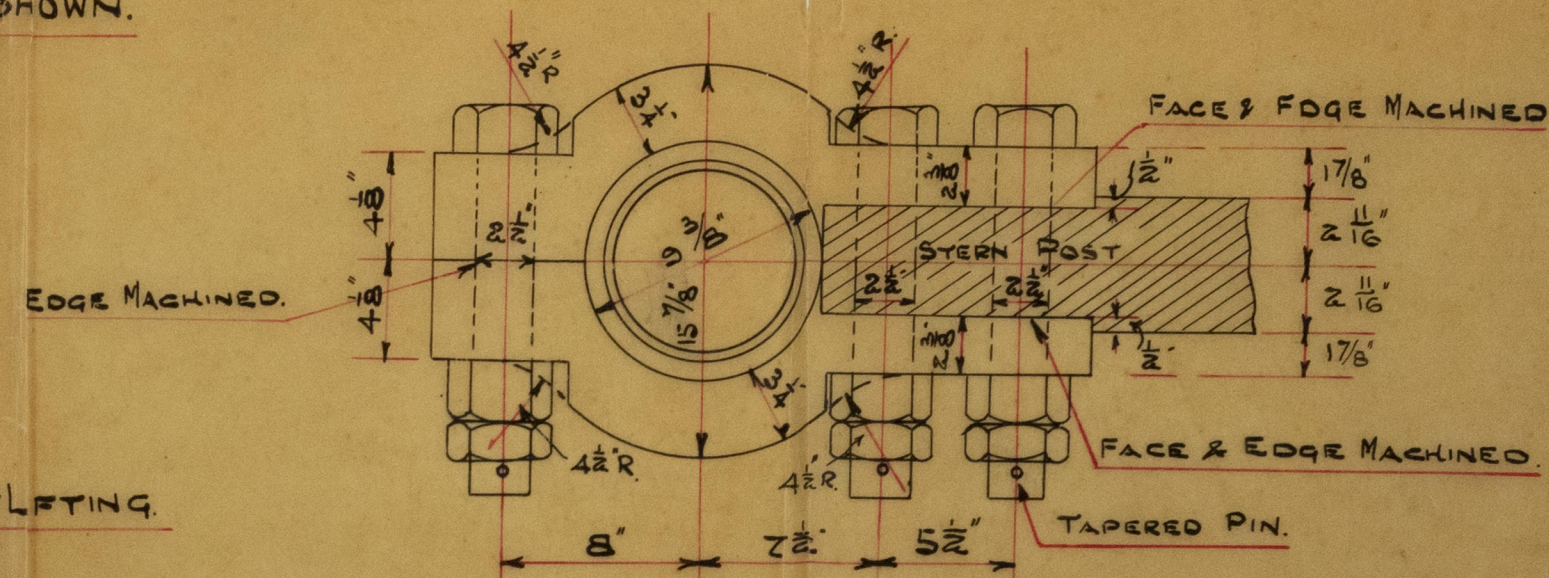


SECTION THROUGH RUDDER ARMS.

HOLES COUNTERSUNK AS SHOWN.

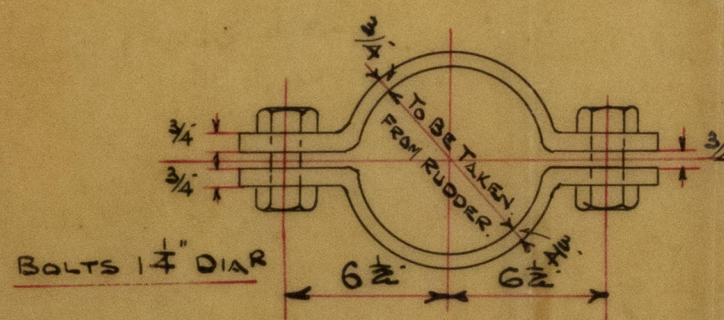
DETAIL OF BEARING GUDGEON.

SCALE $\frac{1}{2}$ " = 1 FOOT



COUPLING BOLTS TO BE TURNED & FITTED.

DETAIL OF RING TO PREVENT LIFTING.

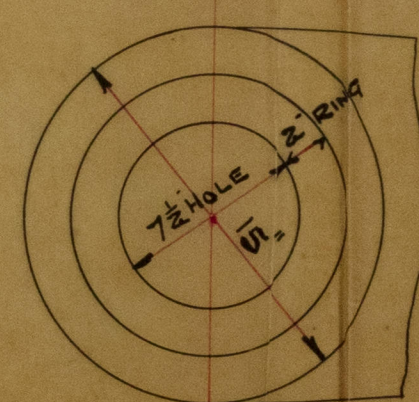


NOTE.

ALL MACHINING AND DRILLING ETC TO BE DONE BY MAKERS
POSITION OF KEYWAY FOR CROSS HEAD & MILLER WILL BE SENT LATER
ARMS TO BE MADE FOR PLATE TO REE/E EASILY.
CHECK NUTS FITTED WITH TAPERED PINS TO BEARING GUDGEON BOLTS.

DETAIL OF BOTTOM GUDGEON.

SCALE $\frac{1}{2}$ " = 1 FOOT



CENTRE LINE OF TOP & BOTTOM BEARINGS TO BE MADE IN A PERFECTLY
STRAIGHT LINE WITH CENTRE LINE OF STOCK & TO BE SQUARE TO BASE LINE

NOTE CARE TO BE TAKEN THAT RUDDER IS FORGED TO DIMENSIONS
SHOWN ON PLAN AS WE ONLY PAY ON WEIGHTS CALCULATED TO THESE DIMENSIONS.



© 2020

Lloyd's Register
Foundation

North of Ireland S. Co.

No 55*56

Rudder Frame

5/5 Glenmaris

5/5 Glenfayle

5500-002373-0055

1 1/2 SCVLE

ARMS

SHRUNK ON & KEVED

DERRY

8-12

IPBUN
EPAIRERS

LEO

VS COUNTERPUNK SPACED 4 1/4 TO 6 1/4 C6 TO

PLATE 1/4 THICK

PLATE 3/4 TO THICK

KEY

Stoppers to be fitted



STOPPERS TO BE FITTED



© 2020

Lloyd's Register
Foundation