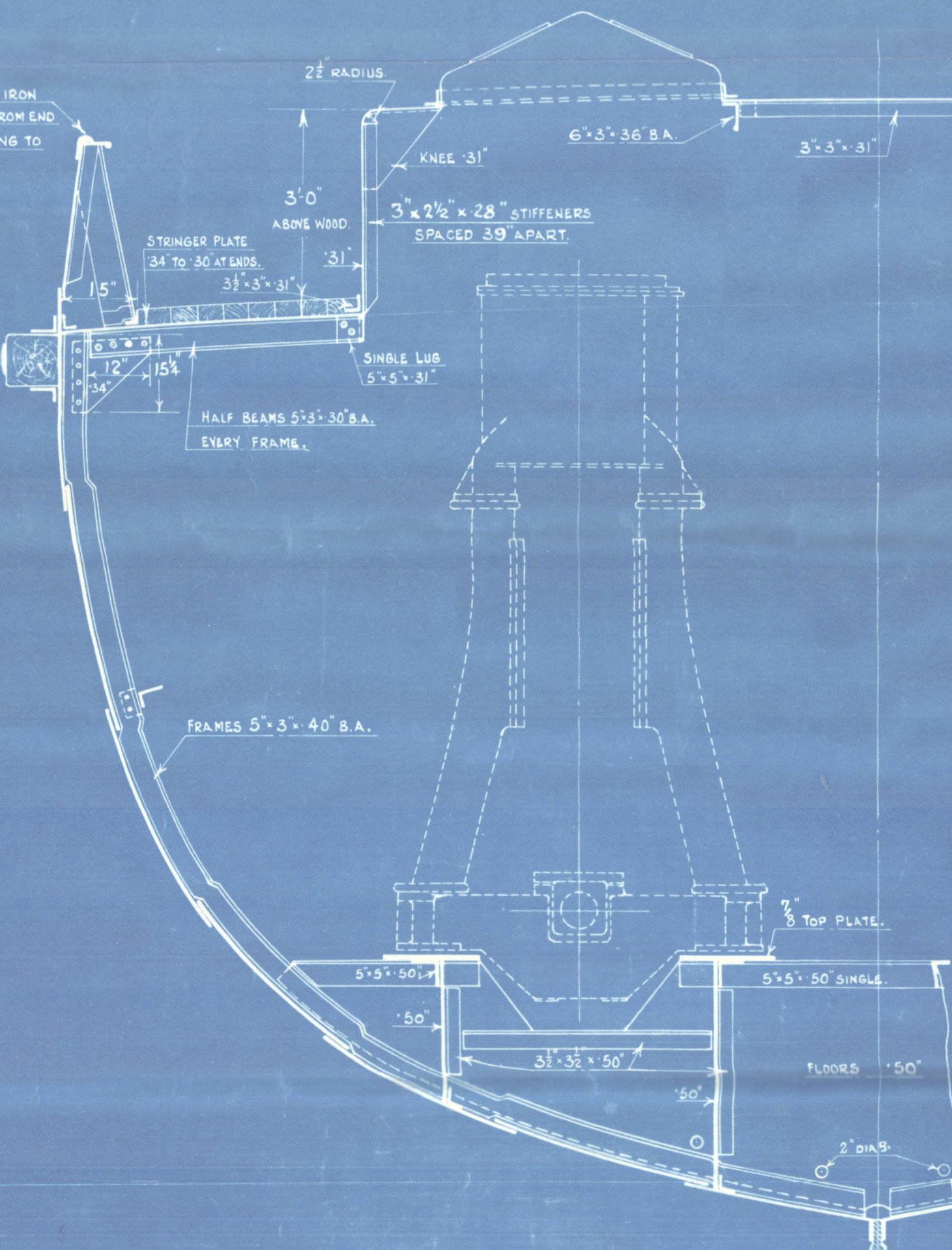


# “ABEILLE N° 16.” HULL SECTIONS.

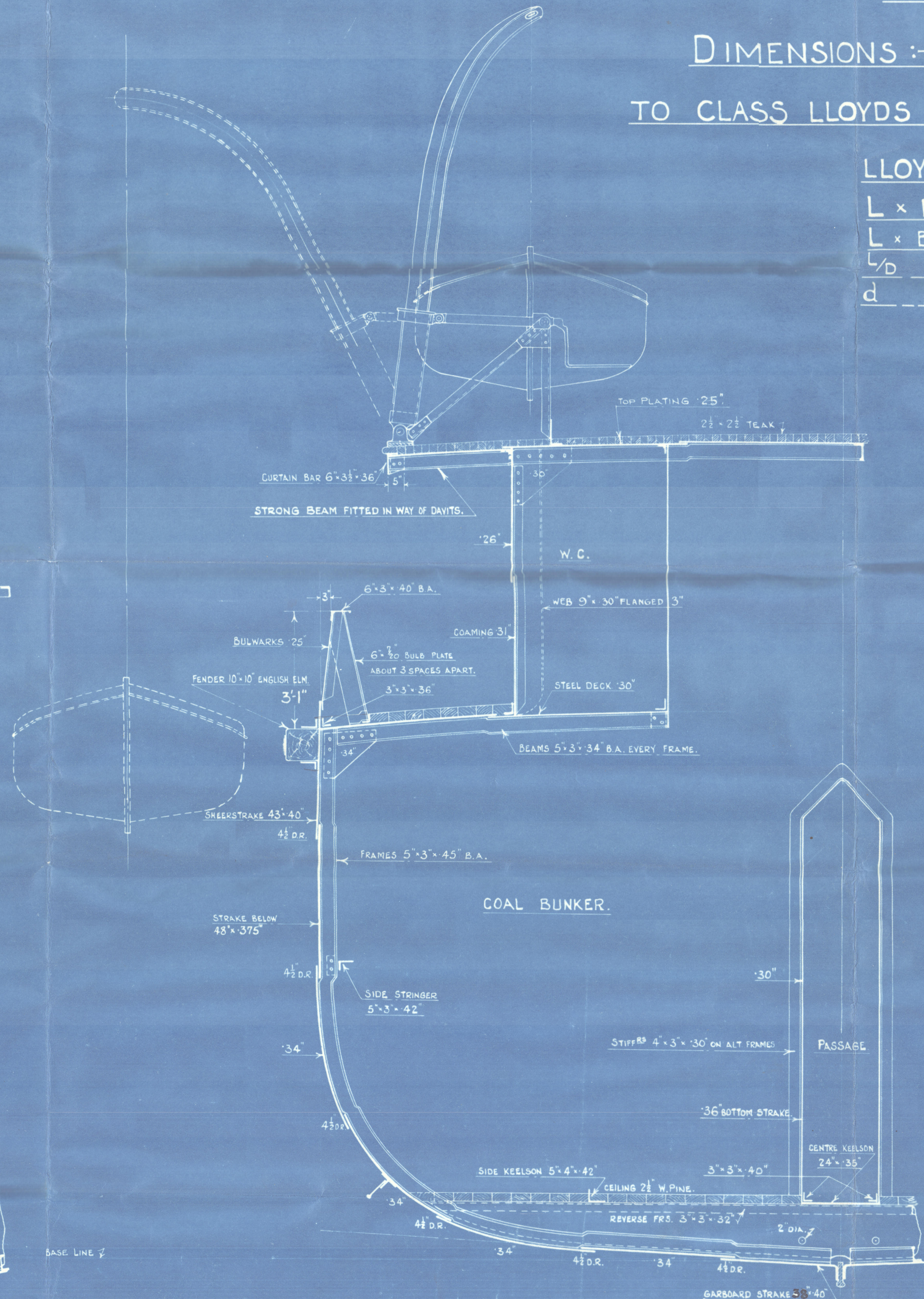
## SCANTLINGS.

STEM & KEEL OF ROLLED STEEL BULB BAR  $7\frac{1}{2} \times 1\frac{1}{8}$ .  
STERNFRAME  $6\frac{1}{2} \times 2\frac{1}{2}$  FORGED STEEL.  
FRAMES:-  $5 \times 3 \times 40$  BULB ANGLES INCREASED TO  $5 \times 3 \times 45$  B.A. IN BOILER ROOM  
& BUNKERS. SPACED  $21\frac{1}{2}$  APART IN BOILER ROOM, 22 APART ELSEWHERE.  
REVERSE FRAMES:-  $5 \times 5 \times 50$  SINGLE ON ENGINE SEAT FLOOR,  $3 \times 3 \times 42$  IN  
BOILER ROOM, DOUBLE UNDER BOILER BEARERS  $3 \times 3 \times 32$  SINGLE ELSEWHERE.  
FLOOR PLATES:-  $18 \times 32$  CLEAR OF ENGINE & BOILER SPACE,  $\frac{1}{2}$  INCH THICK IN ENGINE  
SPACE,  $\frac{1}{4}$  INCH THICK IN BOILER SPACE AND  $\frac{1}{8}$  INCH THICK UNDER  
BOILER BEARERS.

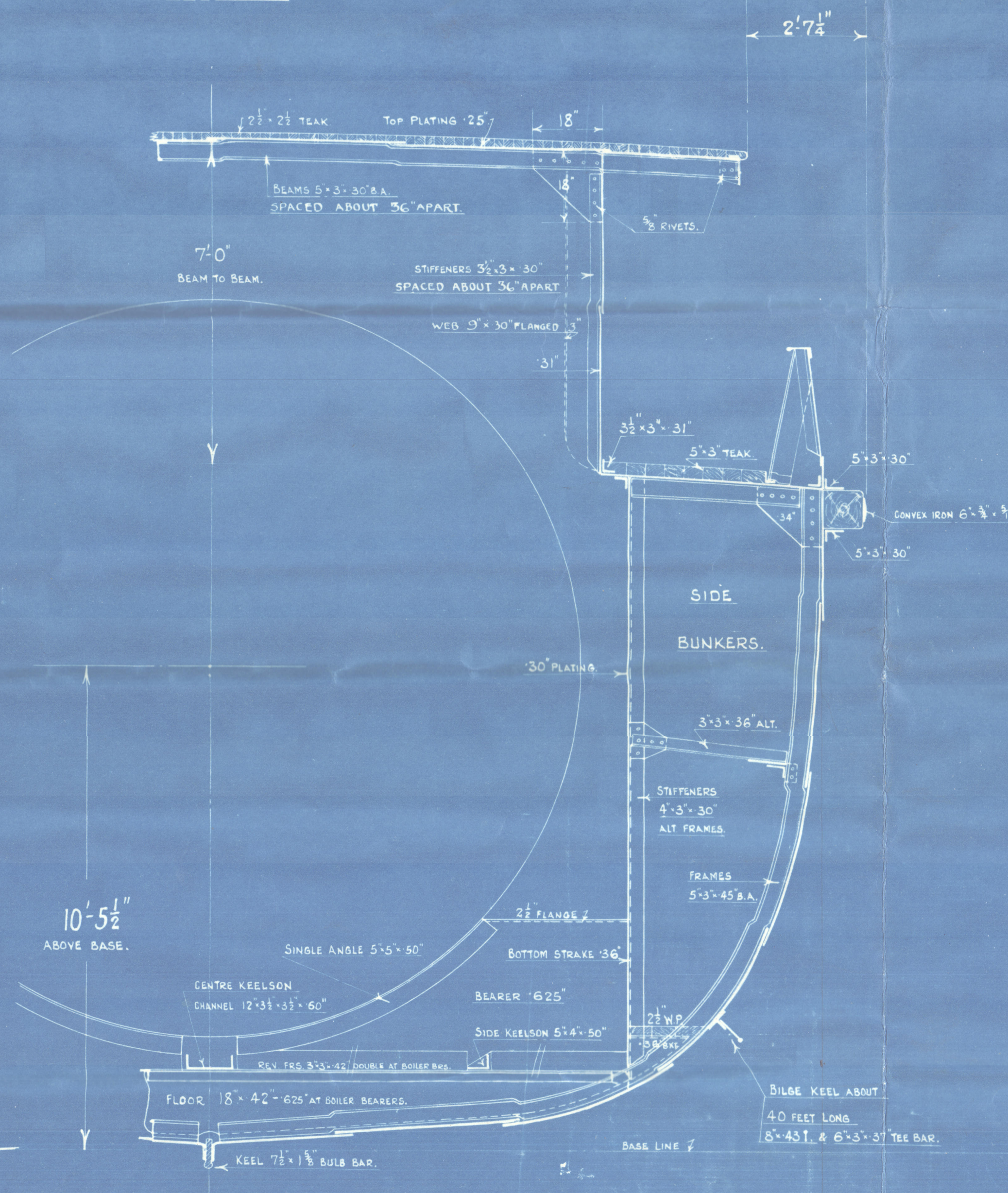
FERCUSON BROS.  
(PORT-GLASGOW) LTD  
SHIPBUILDERS & ENGINEERS



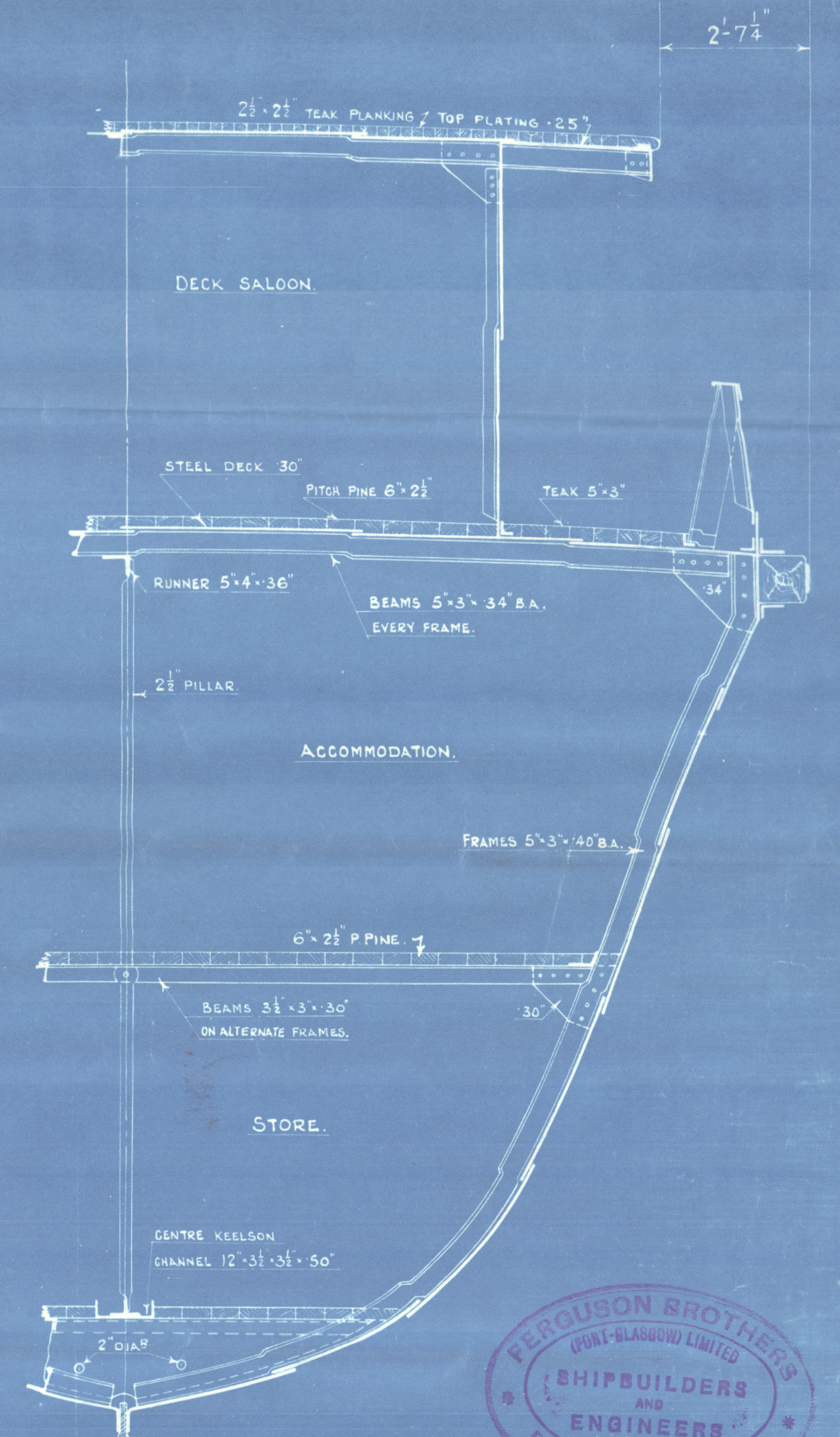
SECTION THRO' ENGINE ROOM.



MIDSHIP SECTION.



SECTION THRO' BOILER ROOM.



FORWARD SECTION.

SCALE  $\frac{1}{2}$ " = 1 FOOT.

DIMENSIONS :-  $125'-0" \times 27'-0" \times 13'-9"$  M<sup>LD</sup>.  
TO CLASS LLOYDS & 100A.1. "FOR TOWING SERVICES."

## LLOYDS NUMERALS.

L x D 1718.75  
L x B + D 5093.75  
L/D 9.09  
d 12.25

## EQUIPMENT.

1 BOWER ANCHOR STOCKLESS 8 CWTs.  
1 " " " 7 1/4 CWTs.  
120 FATHOMS 1 1/8" STUD LINK CABLE.  
HAWERS & WARPS, ETC.  
60 FATHOMS 6" HAWSER.  
60 " 5" WARP.  
2 - 30 FATHOM HEAVING LINES.

## -RIVETING-

BUTTS OF GARBOARD & SHEERSTRAKE STRAPPED & DOUBLE RIVETED.  
BUTTS OF BULKHEADS STRAPPED & SINGLE RIVETED.  
REMAINDER OF SHELL BUTTS LAPPED & DOUBLE RIVETED ALL FORE & AFT.  
RIVETS IN KEEL, STEM & STERNPOST, TO BE 5" FULL ABOVE PLATING.  
HOLES THROUGH FRAMES TO BE REELED IN WAY OF ENGINE SEAT.  
CASING & BULKHEADS TO HAVE WATER-TIGHT RIVETING.  
RIVETS THRO' ROLLING CHOCKS TO HAVE COUNTERSUNK HEADS & POINTS, HOLES WELL COUNTERSUNK.



YARD N° 300.

© 26 APRIL 1930.  
23 APRIL 1930.

Lloyd's Register  
Foundation



Ferguson Bros.

N<sup>o</sup> 300.

Midship Section of Ship  
as built

S.S. - Abelle N<sup>o</sup> 16

Guthrie's Entry Book N<sup>o</sup> 19248.



© 2020

Lloyd's Register  
Foundation

002362-002373-0022