

HAVRE N^o. 7980.

Ship's Name *Steel Sc. "ABEILLE No 21"*

Port of Survey *Harve.*

Official Number

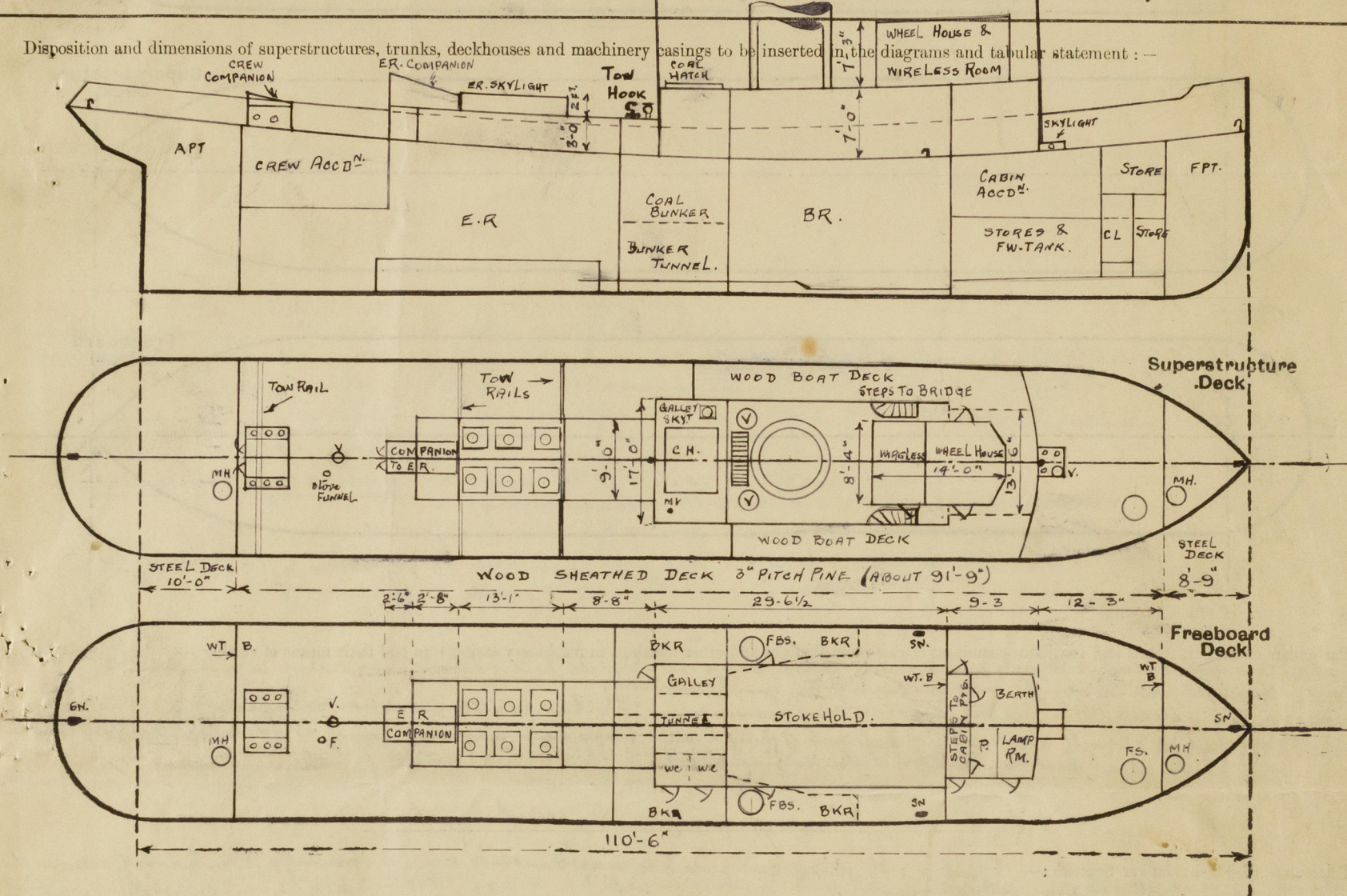
Surveyor's Signature *J. Prechman*

Nationality and Port of Registry. *French. Havre.*

Date of Survey Completed

25TH Aug. 1938.

Disposition and dimensions of superstructures, trunks, deckhouses and machinery casings to be inserted in the diagrams and tabular statement :



Particulars of Superstructures, Trunks, Casings, Deckhouses.

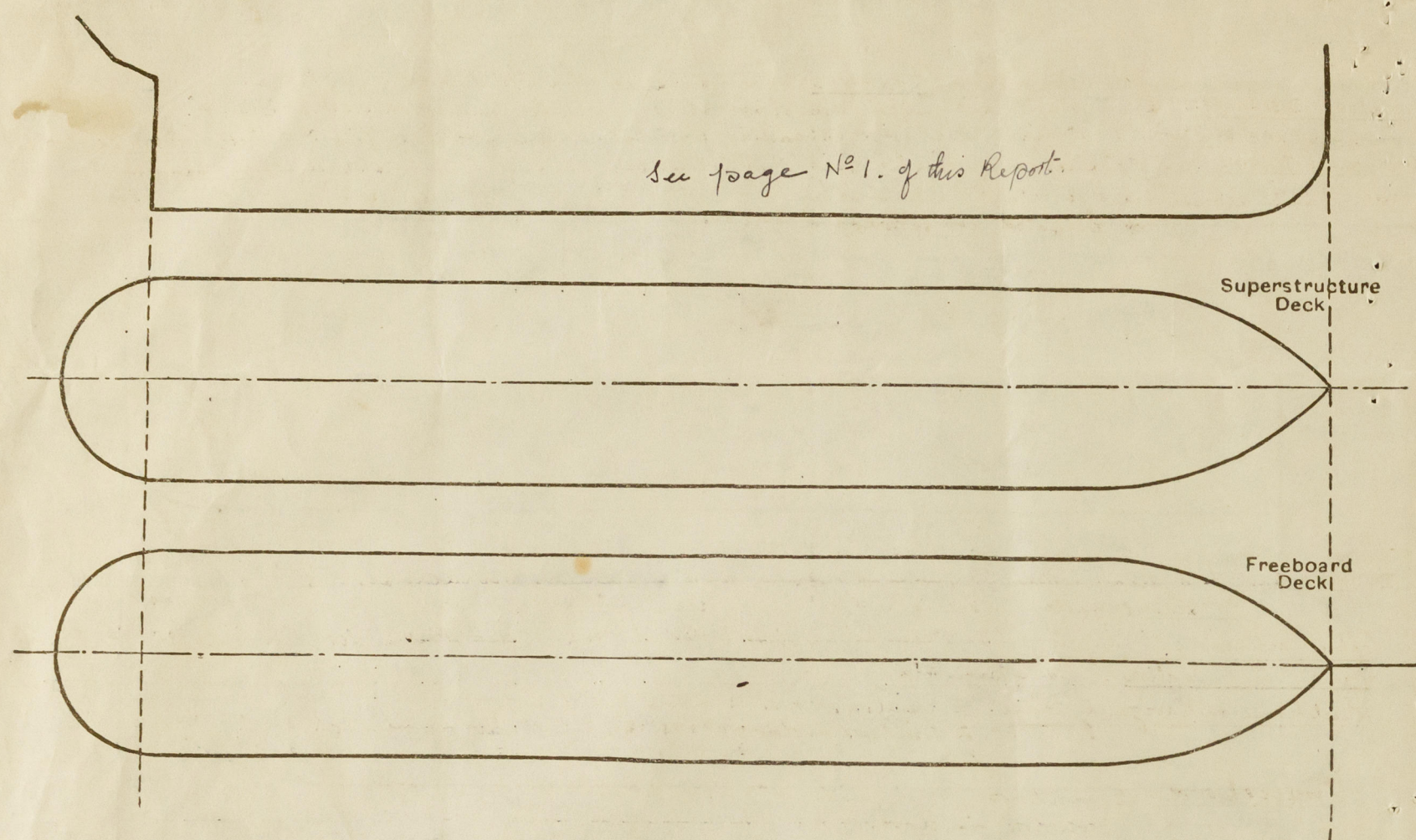
	Coaming	Plating	Stiffeners	Spacing	End Attachments of Stiffeners	Size of Openings	Height of Sills	Height of Casings						
Poop Bulkhead														
Raised Quarter Deck Bulkhead ...														
Bridge, After Bulkhead														
Bridge, Forward Bulkhead														
Forecastle Bulkhead WHEEL HOUSE... Trunk, Aft ... & WIRELESS ROOM ...	TEAK	WOOD			WIRELESS ROOM ON NAV ^g BRIDGE	(1) 1'-10" x 5'-8" I.P. & I.S.	12"	7'-0"						
					WHEEL HOUSE ON NAV ^g BRIDGE	(2) 1'-10" x 5'-8"	13"	7'-0"						
Trunk, Forward														
Exposed Machinery Casings on Free- board or Raised Quarter Decks F.R.	36" x .25	✓	-	2 1/2 x 2 1/2 x .25	✓	32"	✓	TOP BRACKETS 9" x 9" x .25	ER. AT AFT END. 2'-0" x 3'-10"	✓	14"	✓	3'-0"	
Exposed Machinery Casings on Super- structure Decks, FREEBOARD. B.R.	15 1/2 x .25	✓	.20"	✓	2 1/2 x 2 1/2 x .25	✓	30/32	✓	DO. 9" x 9" x .25	✓	STOKEHOLD. I.P. & I.S. (2) 1'-10 1/2 x 4'-6"	16"	✓	7'-0"
Machinery Casings within Superstruc- tures not fitted with Class I Closing Appliances	15 1/2 x .25	✓	.20"	✓	2 1/2 x 2 1/2 x .25"	✓	30/32"	✓	DO. 9" x 9" x .25"	✓	CABIN. I.P. & I.S. (2) 1'-10" x 4'-7"	16"	✓	7'-0"
									LAMP ROOM. (1) 1'-10" x 4'-6"	✓	14 1/2"	✓	7'-0"	
									GALLEY, AFT. END.	✓	(1) 1'-10" x 4'-6"	15"	✓	7'-0"
									WC. S.S. SIDE.	✓	(2) 1'-10" x 4'-7"	17"	✓	7'-0"
Deckhouses on Flush Deck Ships ...									CREW ACCOMMODATION, AFT. COMPANION-WAY.	✓	(1) 2'-5" x 2'-9"	12"	✓	1'-9"

Particulars of Closing Appliances (state if capable of being manipulated from both sides).

POOP Bulkhead	WHEEL HOUSE.	...	2 hinged teak wood doors, $1\frac{3}{8}$ " thick, in halves, top halves fitted with windows, Capable of being closed from both sides.
WIRELESS ROOM.			
Raised Quarter Deck Bulkhead		...	1 hinged teak wood door, $1\frac{3}{8}$ " thick, Capable of being closed from both sides.
Bridge, After Bulkhead		...	
Bridge, Forward Bulkhead		...	
Forecastle Bulkhead		...	
Exposed Machinery Casings on Free-board or Raised Quarter Decks		...	2 (1P & 1S) to Storehold, closed by hinged steel doors in halves, $\frac{1}{4}$ " thick, Capable of being closed from both sides ✓
Exposed Machinery Casings on Superstructure Decks - FREEBOARD.		...	1 to Engine Room, closed by double teak wood doors, $1\frac{1}{2}$ " thick, Teak sliding top. Capable of being closed from both sides ✓
Machinery Casings within Superstructures not fitted with Class 1 Closing Appliances		...	DECK HOUSE
		...	2 (1P & 1S) to CABIN BELOWDK, closed by hinged teak wood doors $1\frac{1}{2}$ " thick, Capable of being closed from both sides.
		...	2 (S.SIDE) to Officers & Crew WCs. closed by hinged teak wood doors $\frac{1}{2}$ " thick, Capable of being closed from both sides.
		...	1 (AFT END) to Galley, closed by hinged steel door in halves, $\frac{1}{4}$ " thick, Capable of being worked from both sides.
		...	1 (S.SIDE) to Lamp Room, closed by hinged steel door $1\frac{1}{4}$ " thick, Capable of being closed from both sides.
Deckhouses on Flush Deck Ships		...	1 to Crew COMPANION AFT & at aft end, closed by double teak wood doors & sliding top. Capable of being closed from both sides. Thickness $1\frac{1}{2}$ "

PARTICULARS OF PROTECTION TO OPENINGS, ETC.

The following diagrams should be used to indicate the positions of cargo and coaling hatchways, gangway, cargo and coaling ports, ventilators, companionways, etc., which would affect the seaworthiness of the ship:—



Particulars of fiddle, funnel and ventilator coamings, engine room skylight and other openings in machinery casing tops and their means of closing:—
FIDDLE. Top & sides of steel. 1 strongly framed grating opening 19 x 4 ft over stokehold having storm cover attached in good order.
FUNNEL. Arranged with full height outer air casing in good condition.
VENTILATORS. Two to stokehold on fiddle top 1 P & 1 S. Ht of coamings 6' 11" x 1/2" thick. Dia. 20". Condition satisfactory.
ENGINE ROOM. Skylight strongly constructed of steel with 3 hinged steel flaps each side each having 1-12" glass circle. Good Condition.
NOTE:—There are two ventilators to the engine room.

Particulars of Flush Bunker Scuttles:— 1 port & 1 starboard of cast iron to side bunkers, dia. of openings 18 1/2" having screw down covers with chain attachments.
 1 c.d. flush scuttle to forward store room & chain locker, dia of opening 18 1/2" having screw down cover & chain attachment.
 All in good order.

Particulars of Companionways:— One to Crew Accommodation aft situated at after end of raised steel skylight. Raised steel skylight 4' 6" x 5' 9 1/2" ht above deck 24". The top is of teak wood having one teak wood hinged flap each side each having 3-7" dia. glass circles. Dims of openings 4' 2" x 11 1/2". Teak wood sliding top for entrance. 2-7 1/2" glass scuttles are fitted each side of steel skylight casing, 3 1/2" above wood deck. No dead lights are fitted.
 One to engine room built in to after end of E.R. casing having teak wood sliding top.
 For particulars of openings & means of closing. See page N°1.

Particulars of Ventilators in exposed positions on freeboard and superstructure decks:— One vent to Cabin situated on steel casing. Dia. 14" ht of coaming above steel skylight 3 ft. height of steel skylight above deck 1' 6". Thickness of coaming 1/4" fitted with steel cap cover. Good condition.
 2 Swan neck vents, 1 P & 1 S. to officers & engs. accommodation, dia. 4", height of free ends 9 1/2". Wood plugs fitted & attached by chains.
 One vent to Crew Accommodation aft. Dia. 13", ht of coaming 2' 10" x 1/4" fitted with steel cap cover.
 One deck coaming for crew stove dia. 4" ht above deck 9 1/2". Wood plug & cover fitted.
Fiddle top. 1 screw down mushroom vent on after wc. 6" dia. ht 9".
 1 steel skylight to galley with hinged steel flap, 1' 10" x 1' 10". Flap fitted with 1-12" dia glass circle.

Particulars of Air Pipes in exposed positions on freeboard, raised quarter, or superstructure decks:—

- 1-2 3/4" Swan neck air pipe to FPT. height of free end 14" above deck. Wood plug attached.
- 1-2 3/4" Swan neck air pipe to APT. height of free end 14" above deck. Wood plug attached.

Particulars of Gangway Cargo and Coaling Ports:— None.

Abeille N°21.

Particulars of Scuppers and Sanitary Discharge Pipes:— **SCUPPERS** 5 each side 4" x 2 3/4" Above deck type 1.
SANITARY DISCHARGES. 2 on starboard side fitted with storm valves, 2 ft below foreward deck. Dia. 4".
WINDLASS EXHAUST STEAM. 1-2" dia. copper pipe exhausting 8' 5" below deck, attached direct to shell without sea cocks.
WINDLASS DRAINS 1-1 3/8" steel pipe discharging 3' 6" below deck, attached direct to shell without sea cocks.
NOTE:—Water service for wc's. about 1" dia pipe with inlet about 8' 8" below deck situated in boiler room, sea cock fitted.
 * Situated in forward store room.

Particulars of Side Scuttles:— No side scuttles are fitted below deck.
DECK HOUSE. 3-8" dia fitted at forward end, 4' 11" above deck, no dead lights fitted.
 Port side to galley 1-8" dia. 4' 11" above deck. Starboard side 1 1/2 W.C. 8" dia. 4' 11" above deck.
Cabin Accommodation Skylight. 3-7" dia lights (glass circles) in top. 2-7" dia glass circles each side (1 P & 1 S) 5" above deck.
Crew Accommodation. See page N°2.
Wheel house on Navigating Bridge. 2 windows 1 P & 1 S. 12" x 2' 2" ht above deck 3' 9".
 2 windows in doors 1 P & 1 S. 13 1/2" x 2' 1". ht above deck 3' 9".
 3 windows in front end 2' 1" x 2' 2" ht above deck 3' 9".
Wireless Room. 2 windows at after end 14" x 2' 2" ht above fiddle top 3' 9".
 1 window in door 14" x 25" ht above fiddle top 4' 3".

Vertical distance of Sill of lowest Side Scuttle above top of keel. None fitted in ship's sides.

Particulars of Guard Rails:— 1" steel rails fitted at each side of Deck house, boiler & engine room casings.
 None fitted to ship's sides, bulwarks are fitted all fore & aft.

Particulars of Gangways, Lifelines, etc.:— As above rails fitted each side of Deck house & machinery casings.

Particulars of Freeing Arrangements.						
	TOTAL Length of Bulwark	Height of Bulwark	Size of Freeing Ports	Number each side	Area each side	Rule area each side FOR 7L
After Well ...	110' 5"	For 5 ft AMID. 3 ft Aft. 3 ft.	2' 6" x 1' 3"	5.	15.625 sq ft	15.478
Forward Well	16' 10"	18' 7"	16' 3"	20' 0"	22' 9"	22' 5"
State position of each freeing port ... After Well:— Forward Well:— aft 6" - forward 8"						
State whether the freeing ports are fitted with shutters, bars, or rails, and give particulars of such:— Shutters fitted with hinged Centre bar. Freeing port area. In addition to the above, there are 2 mooring horse holes in bulwarks 1 P & 1 S. 12 1/2" x 16 1/2" ht. 14" above deck, & 2 horse holes in after bulwarks 1 P & 1 S. 12" x 10", ht above deck 13".						
Additional area where sheer is less than standard.						

PARTICULARS OF PROTECTION TO OPENINGS, ETC.

HATCHWAYS ON FREEBOARD AND SUPERSTRUCTURE DECKS.									
ON FIDDLEY TOP.									
Description of Hatchway
Dimensions of Hatchway
COAMINGS	Height above Deck	...	6x3" BA
	Thickness	Sides	...	3/8"	✓
	Stiffeners	✓
	Brackets, Stays	✓
HATCH BEAMS	Number
	Spacing
FORE AND AFTERS	Scantling and Sketch
	Number
	Spacing
	Unsupported Lengths
HATCH COVERS	Scantling* and Sketch
	Material
HATCH COVERS	Thickness
	How fitted
	Bearing Surface
	Spacing of Cleats
Number of Tarpaulins

*Are wood fore and afters steel shod at all bearing surfaces? ✓									
Are battens and wedges efficient and in good condition? Yes. ✓									
Are tarpaulins in good condition and in accordance with rule requirements? 1 new tarpaulin being fitted. X									
Are lashings provided in accordance with rule requirements? None. ✓									

Particulars of any special features:— As Steam Tug - no special features except that Sheer aft is in excess of forward sheer.

Endorsement at first survey and at surveys for renewal of Certificate:—

The fittings and appliances are in accordance with the particulars shown on this form (or as now modified) and are in good condition.

Breckmann