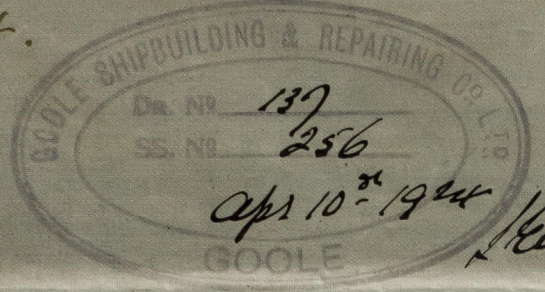


30/4/24.



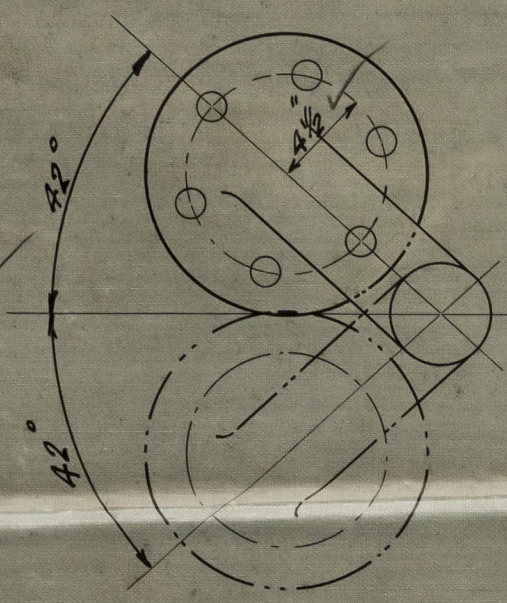
No 256 RUDDER AND STERNFRAME

SCALE $\frac{3}{4}$ " = 1 FT.
TO CLASS 100 A.I. LLOYDS.
RUDDER NUMERAL - 61.85
SPEED UNDER 12 KNOTS.

AREA AHEAD CR. LINE OF PINTLES - 33.8
C.G. FROM CR. LINE OF PINTLES - 1.83
A x D - 61.85

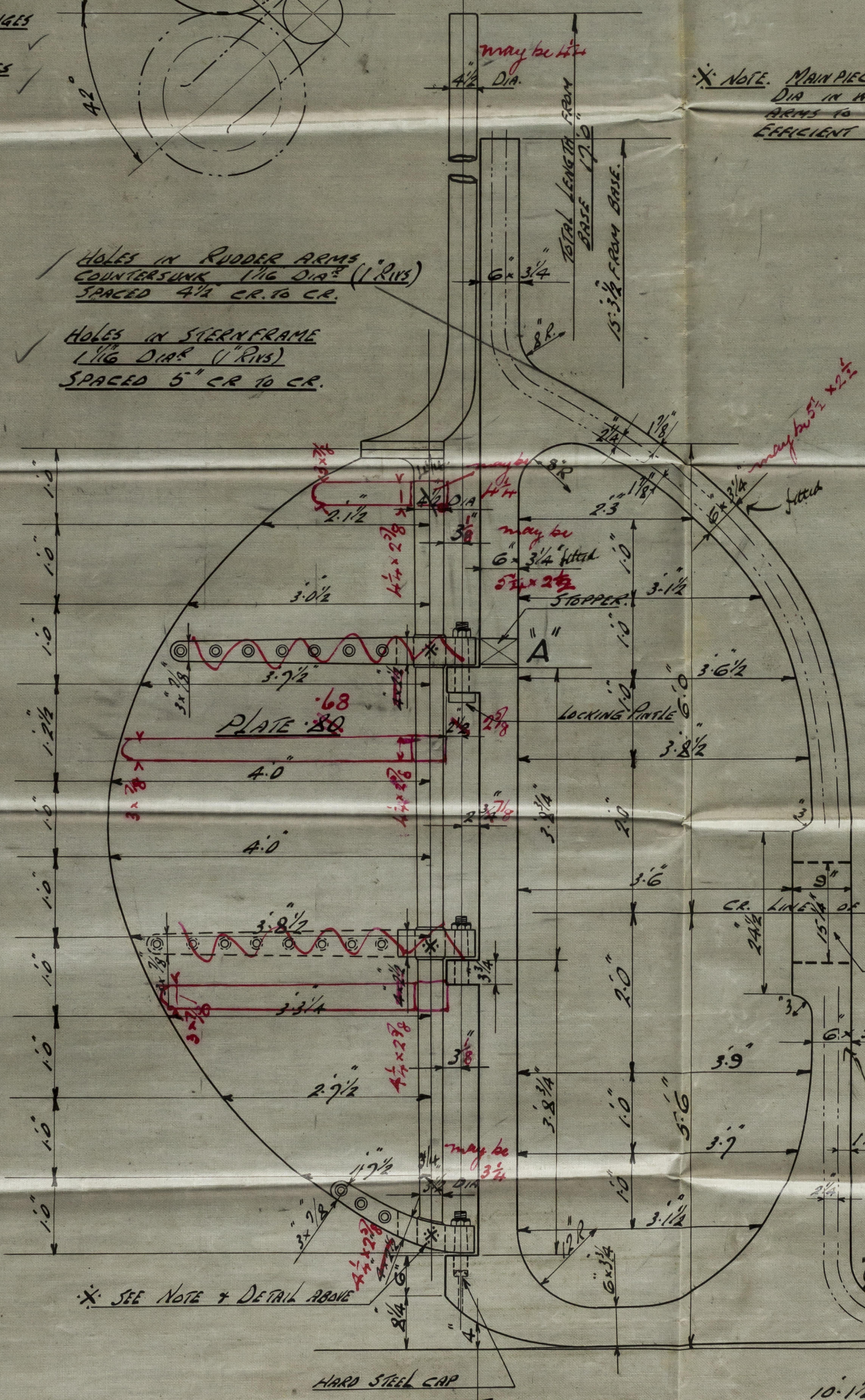
DETAIL COUPLING.
 $\frac{1}{2}$ " SCALE

FLANGES OF COUPLING
- 12 1/2" DIA.
THICKNESS OF FLANGES
- 1 1/8"
TO HAVE 6 BOLTS
1 1/8" DIA.

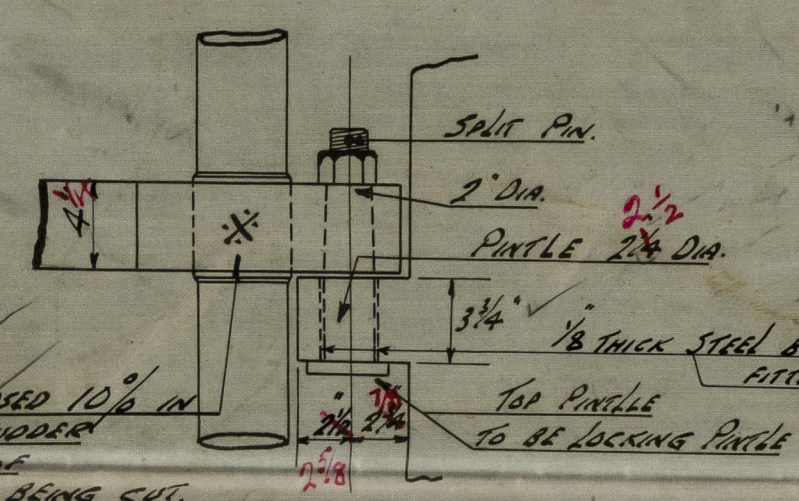


Holes in RUDDER ARMS
COUNTERSUNK 1 1/16" DIA. (1" RNS)
SPACED 4 1/2" CR. TO CR.

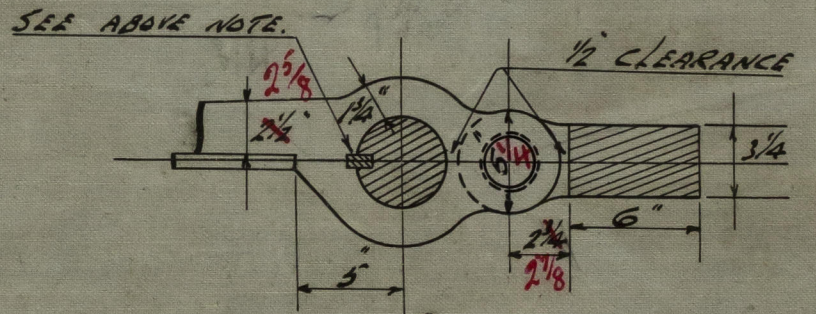
Holes in STERNFRAME
1 1/16" DIA. (1" RNS)
SPACED 5" CR. TO CR.



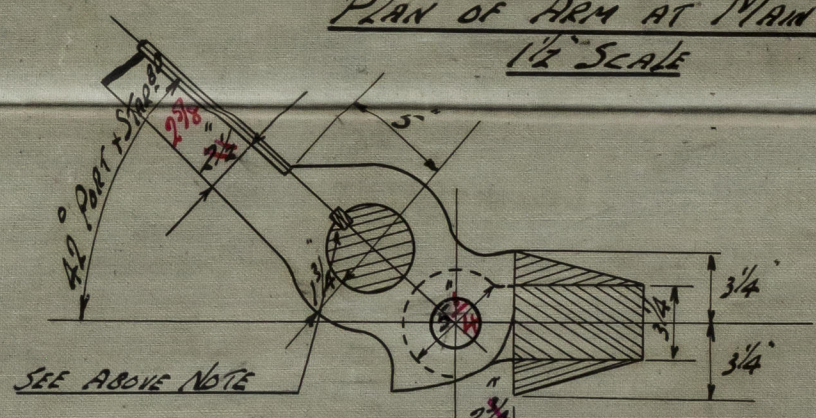
* NOTE. MAIN PIECE INCREASED 10% IN DIA. IN WAY OF RUDDER ARMS TO ADAPT OF EFFICIENT KEYWAY BEING CUT.



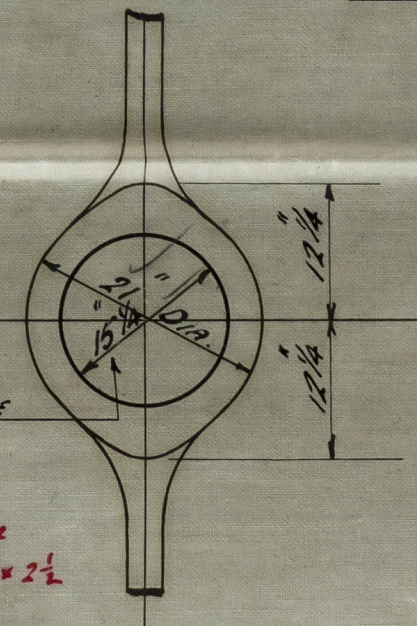
SKETCH OF PINTLE
 $\frac{1}{2}$ " SCALE



PLAN OF ARM AT MAIN PIECE
 $\frac{1}{2}$ " SCALE



SKETCH OF STOPPER ON STERNFRAME "A"
 $\frac{1}{2}$ " SCALE.



b.b.f.
30.4.24

MESSRS GOOLE SHIPBUILDING & REPAIRING CO. LTD
GOOLE
YORKSHIRE ENGLAND.

BASE LINE
10' 1 1/2"
Incline of Keel 2 1/4" IN 10 FT.
SCARPH 11 13/16" LONG.
POINTS 5/16" THICK

