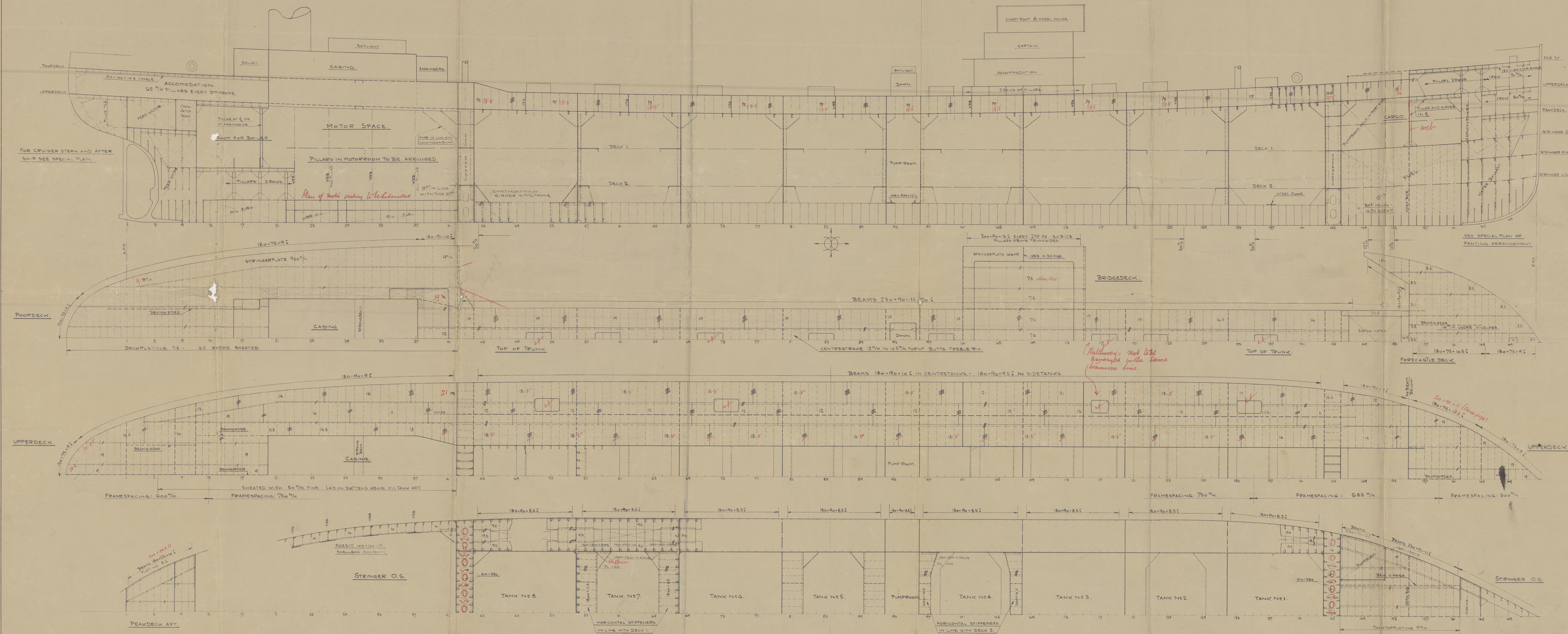


16/7/29

# BUILDING N° 41.- PROFILE AND DECK PLANS.- SCALE 1:100.



DIMENSIONS:

LENGTH OUTSIDE STEM AND STERNPOST	123.924 MTR. = 406'7"
BREADTH MOULDED	10.611 MTR. = 34'6"
DEPTH MOULDED TO MAINDECK	9.830 MTR. = 32'3"
HEIGHT OF POOP, BRIDGE AND FORECL.	2.285 MTR. = 7'6"

CLASS: "LLOYDS REGISTER" \* 100 A.I. CARRYING PETROLEUM IN BULK.

MATERIAL: STEEL.

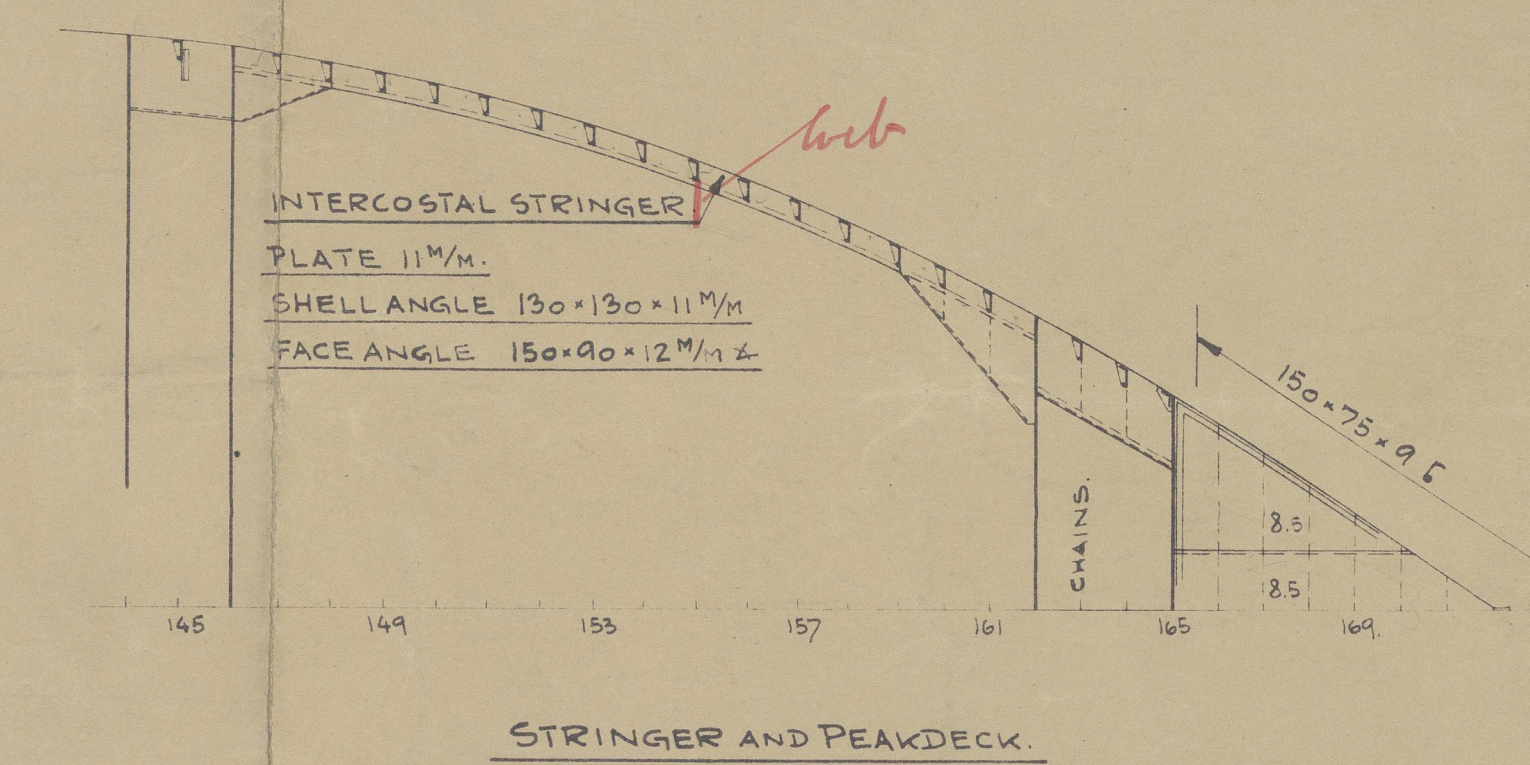
SCANTLING NUMBERS IN MTR.

FIRST LONGITUDINAL N° L x D	= 123.924 x 9.830	= 1218.17
SECOND " " " " " "	= 123.924 x 9.830	= 3276.67
L x D	= 123.924 x 9.830	= 1163.2
L x D	= 123.924 x 9.830	= 10.65

SCANTLING NUMBERS IN FEET.

FIRST LONGITUDINAL N° L x D	= 406.58 x 32.25	= 13112.21
SECOND " " " " " "	= 406.58 x 32.25	= 35270.82
L x D	= 406.58 x 32.25	= 10.65
L x D	= 406.58 x 32.25	= 10.65

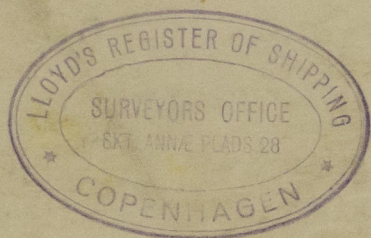
ALL BULB SECTIONS ARE BASED ON THE 1924 STANDARDS.





Profile & D.K.  
Profile and Decks  
No 41

Odense Staalskibsvaerft



m/s. Aase Mærsk of Nyborg.  
Cpm. Rpt. No. 8362.

20  
15  
7  
72



© 2020

Lloyd's Register  
Foundation

002352-002361-0095