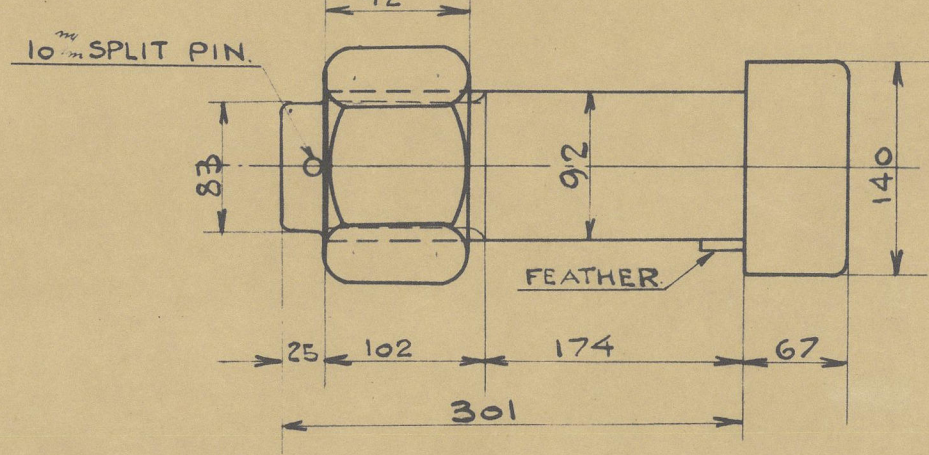


12/11/29

BUILDING N°41 STERNFRAME AND RUDDER. SCALE= 1:15 AND 1:5.

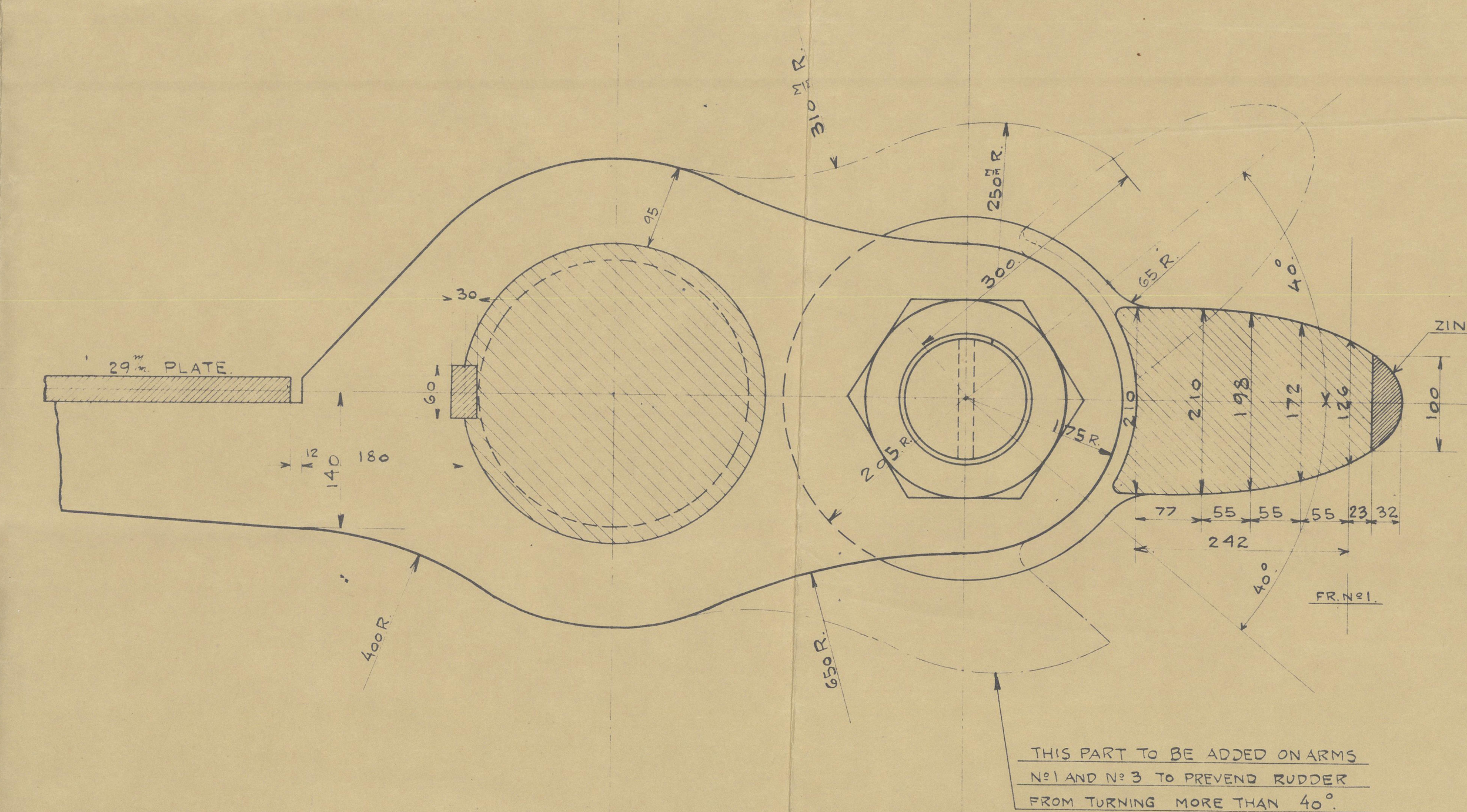
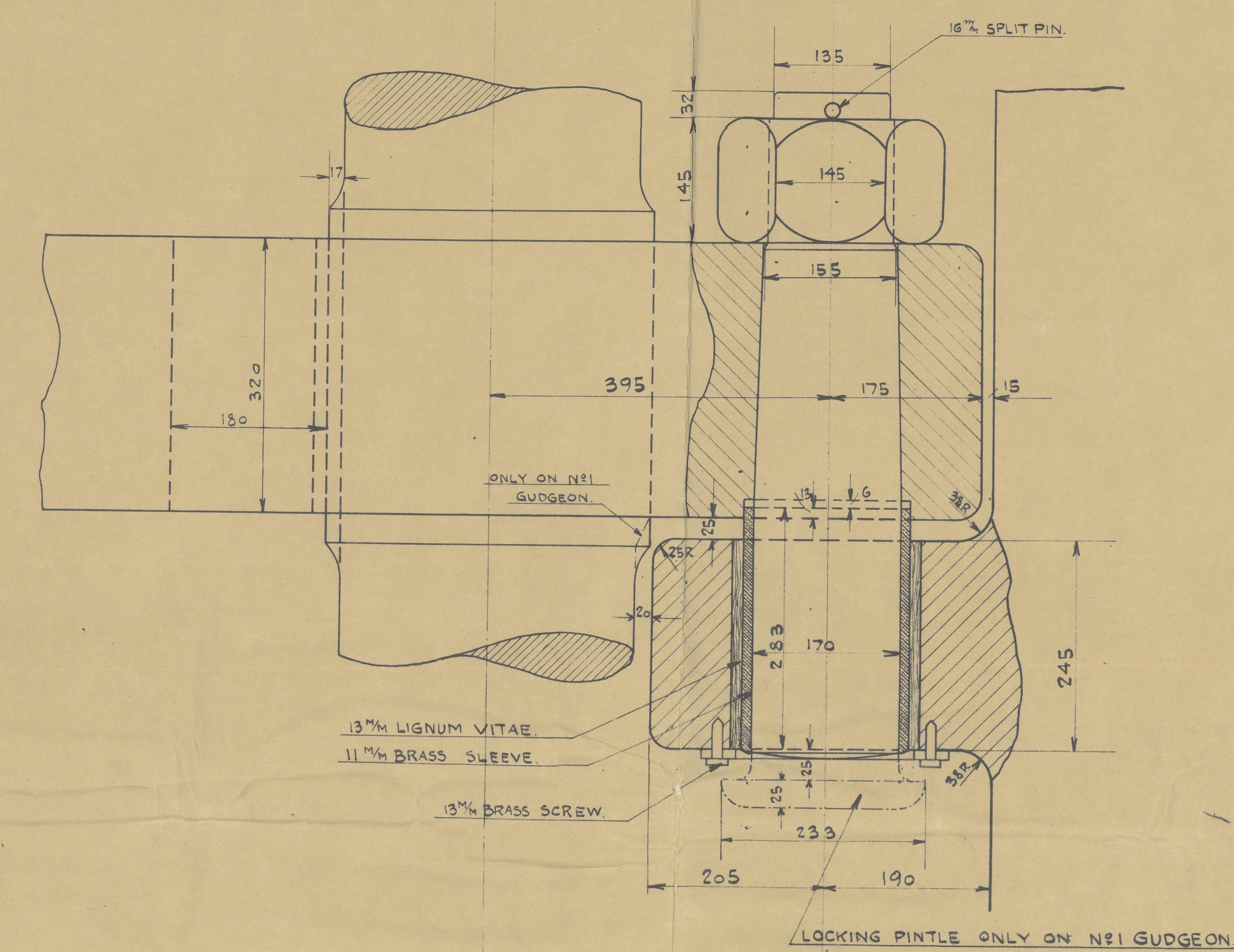


Technical drawing of a ship's hull section. The drawing shows a cross-section of a hull with a diagonal faying surface. A dimension line indicates a distance of 2.0. A note specifies: "ANGLE TO BE 90° WITH DIAGONAL FAYING SURFACE". A vertical dimension line on the right side indicates a height of 15.0 INCHES.

STERNFRAME OF CAST STEEL  
RUDDERSTOCK OF FORGED STEEL  
RUDDERARMS OF FORGED STEEL SHRUNK  
ON AND KEYED TO MAIN PIECE  
PINTLES OF STEEL WITH BRASS SLEEVE  
BRITISH LLOYDS TEST  
CERTIFICATE TO BE DELIVERED

	RUDDER STOCK 9/16" P.I.C.E DIA. IN MM		RUDDER POST		HEEL P.I.C.E		GUDGEONS		PIN
	HEAD	HEEL	DIM	AREA	DIM	AREA	THICKNESS	DEPTH	DIA
	IN	IN	IN	SQ IN	IN	SQ IN	IN	IN	IN
RULE DIMENSION	3/20	2/40	242/18	470	300/215	648	80	225	3/10
OWNER'S EXTRA	+ 5/8	+ 6/16		+ 5/8	+ 10/8	+ 10/16	+ 10/8	+ 10/8	
ACTUAL DIMENSION	3/40	2/5		498	315/215	702	95	245	1/70

AREA OF RUDDER 14.40 SQUARE METRES  
CENTRE OF GRAVITY FROM E OF PINTLES 1.35 M  
MOMENT OF RUDDER  $A \times D = 19.44$   
SPEED OF VESSEL 11 KNOTS

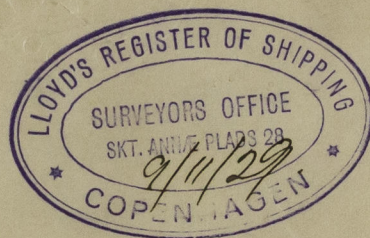
[illegible]



STERNFRAME & RUDDER

1/041

ODENSE SHIPYARD.



m/s. Aase Mærsk of Nyborg  
Gjn. Rpt. No. 8362.



© 2020

Lloyd's Register  
Foundation

002352-002361-0094