

# Lloyd's Register of Shipping.

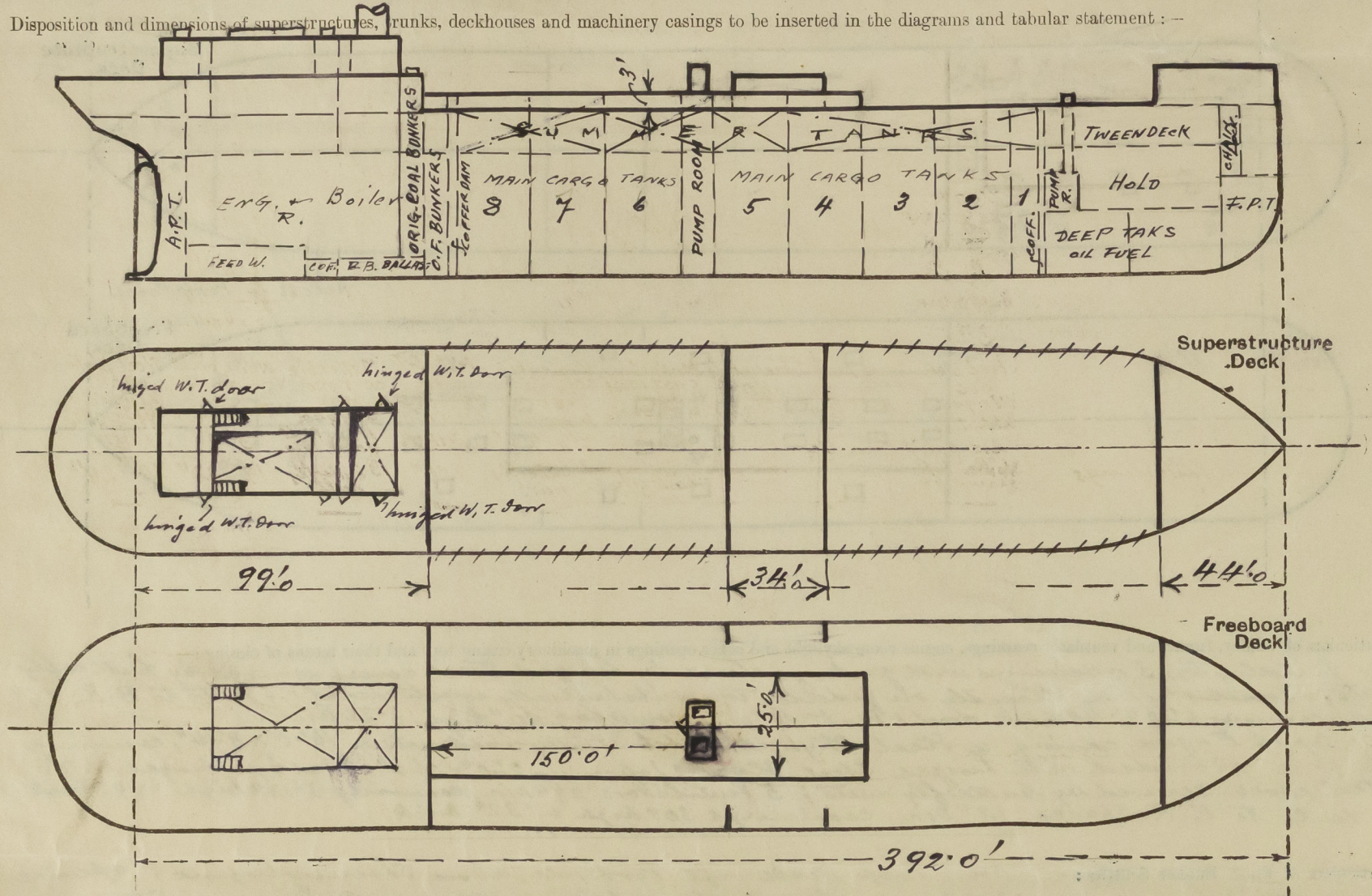
## SURVEYS FOR FREEBOARD.

(CONDITIONS OF ASSIGNMENT.)

22 DEC 1944

Ship's Name *S.S. SAINT MORITZ* ex *J. J. Coney* Port of Survey *Genoa*  
 Official Number *16* Surveyor's Signature *Ariliani*  
 Nationality and Port of Registry *Suisse — Basle (Bâle)* Date of Survey *29.11 + subsequent, completed 15 December 1944*

Disposition and dimensions of superstructures, trunks, deckhouses and machinery casings to be inserted in the diagrams and tabular statement:—



Particulars of Superstructures, Trunks, Casings, Deckhouses.

	Coaming	Plating	Stiffeners	Spacing	End Attachments of Stiffeners	Size of Openings	Height of Sills	Height of Casings
Poop Bulkhead ...	36	36	HORIZ. L 6 x 3 x .44 LONGIT. B heads	31" 8' 4"	Brackets	No openings	—	8' 0"
Raised Quarter Deck Bulkhead ...								
Bridge, After Bulkhead ...				open				
Bridge, Forward Bulkhead ...				open				
Forecastle Bulkhead ...	34	34	O.A. 5 x 3 x .40 Vertical webs + O.T. Tr. B heads	40" - 45" 8' 6"	Brackets at top free at heel	5' 6" x 2' 2 1/2"	12"	8' 0"
Trunk, Aft ...	36" x .40	—				Nil	—	3' 0"
Trunk, Forward ...								
Exposed Machinery Casings on Freeboard or Raised Quarter Decks ...								
Exposed Machinery Casings on Superstructure Decks ...	21 x .40	32	HORIZ. O.A. 5 x 3 x .40 @ 32" Webs L 12 x 3 1/2 x .46 + L 9 1/2 x 3 x .33	@ 7' 0" to 10' 0"	bracketed	5' 6 1/2" x 2' 1"	12"	8' 0"
Machinery Casings within Superstructures not fitted with Class I Closing Appliances ...								
ACCESS TO PUMP ROOM Deckhouses on Flush Deck Ships ON TOP OF TRUNK	—	38	O.A. 5 x 3 x .40	36"	brackets at top + bottom	5' 0" x 2' 0"	12"	6' 6"

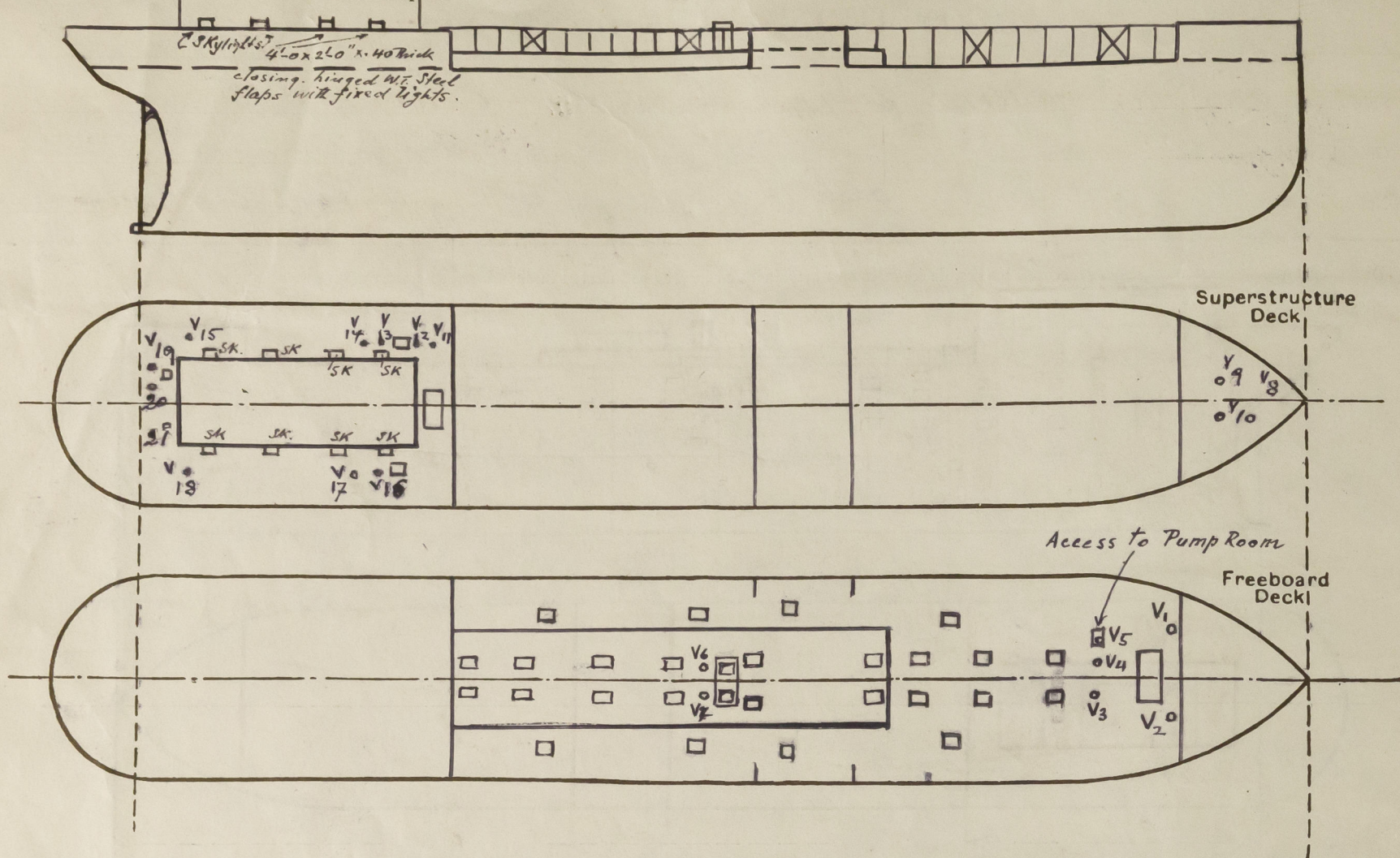
Particulars of Closing Appliances (state if capable of being manipulated from both sides).

Poop Bulkhead ...	No openings
Raised Quarter Deck Bulkhead ...	
Bridge, After Bulkhead ...	open
Bridge, Forward Bulkhead ...	open
Forecastle Bulkhead ...	1 opening closed by a hinged steel W.T. door substantially constructed, secured by clips capable of being operated from both sides.
Exposed Machinery Casings on Freeboard or Raised Quarter Decks ...	
Exposed Machinery Casings on Superstructure Decks ...	2 openings closed by hinged steel W.T. doors substantially constructed, secured by clips capable of being operated from both sides.
Machinery Casings within Superstructures not fitted with Class I Closing Appliances ...	
ACCESS TO PUMP ROOM Deckhouses on Flush Deck Ships ON TOP OF TRUNK	1 opening closed by a hinged steel W.T. door substantially constructed, capable of being operated from both sides.



### PARTICULARS OF PROTECTION TO OPENINGS, ETC.

The following diagrams should be used to indicate the positions of cargo and coaling hatchways, gangway, cargo and coaling ports, ventilators, companionways, etc., which would affect the seaworthiness of the ship:—



Particulars of fiddle, funnel and ventilator openings, engine room skylight and other openings in machinery casing tops and their means of closing :-

On Fiddle, top 3 openings with gratings closed by hinged Steel covers secured by butterfly nuts; Funnel stepped directly on fiddle top, substantially constructed, 3 Vents to B.R. 36" Dia, casing 6' 3" x 40" thick and 1 Vent. 18" Dia, casing 30" high x 32" thick.

On top of Engine casing, a Steel Skylight substantially constructed, 16'-0" x 8'-4", casing 12" x 32, provided with hinged Steel flaps, 1 opening 2'-0" x 2'-0" closed by a hinged W. T. Steel cover secured by butterfly nuts; 5 Ventilators 23" Dia, casing 5' 3" high x 30" thick; 2 Vents to E.R. Spaces 18" Dia, casing 30" high x 32" thick.

Particulars of Flush Bulkhead Scuttles:— on Poop Deck aft Portside, above Steering Engine, 1 opening 30" x 30", frame angle 3" x 3" x .32, closed by a hinged Watertight cover of Steel, secured by butterfly nuts spaced 13" apart.

Access to forward Pump Room is gained through a trunk (6'-0" x 4'-0" x 2'-7" coaming 140" thick-top 140"), on top of which is an opening 2'-0" x 2'-0", coaming angle 3 x 3 x 4 1/4, closed by a hinged steel watertight cover, secured by clips capable of being operated from both sides.

Particulars of Ventilators in exposed positions on freeboard and superstructure decks :—

No	Position	COAMINGS			LEADING TO:	MEANS OF CLOSING:	REMARKS
		DIA	THICKNESS	HEIGHT			
1-2	on Freeboard Deck	24"	.40	9'6"	Hold	Screw down W.T. cover	fastened to Fole ✓
3-4	" " "	23"	.40	36"	Hold - Tween Decks	Wood plug & canvas cover	✓
5	" " "	15"	.36	54" A.P.	Pump Room Journal	Screw down W.T. cover	54" height above Deck, but 24" above top of trunk to Pump Room ✓
6-7	on Trunk Deck	14"	.36	55"	Pump Room R	wood plug & canvas cover	fastened to Pump R. casing ✓
8	on Fole Deck	6"	.32	18"	Tore peak Spaces	wood plug	goose neck vent ✓
9-10	" " "	19"	.40	3'6"	Hold - Tween Decks	wood plug & canvas cover	✓
11-12	on Prop Deck	10"	.32	48"	Access in Prop	wood plug & canvas cover	Bracketed to Deck ✓
19	" " "	10"	.32	3'6"	After peak of frame	Screw down W.T. cover	much room vac'd. ✓
20-21	ON Boat Deck	15"	.36	27"	Steering Eng. & Ref. Mach. R	wood plug & canvas cover	✓

Particulars of Air Pipes in exposed position on freeboard, raised quarter, or superstructure decks					
ON UPPER DK:	1 off TO O.R. DEEP TANKS ...	4"	"	Height: 13'-0" (Stayed)	- closing; automatic relieve valve - gauge
	1 " " " "	4"	"	- 36" -	" : hinged lid
	1 " COFFERDAM FWD ...	4"	"	10'-0" (fasten. to Fore Mast)	" : " "
ON TRUNK TOP:	1 " COFFERDAM AFT ...	4"	"	- 36" -	" : " "
	2 " O.F. BUNKERS ...	4"	"	- 4x4 (bracketed) -	" : " "
ON FEEL DK:	1 " FORE PEAK TK ...	5"	"	- 16 1/2" -	" : wood plug
ON POOP DK:	1 " AFTER PEAK TK ...	5"	"	- 34" -	" : " "

Gas pipes from after Main cargo Tanks (3 Port + 3 Stb) fitted on trunk tops & led to a collector pipe 4" dia, which is carried up the Main mast. — Main cargo Tanks (5 Port + 5 Stb) and Summer Tanks (4 Port + 4 Stb) fitted with gas relieve valves situated on top of hatch covers.

Particulars of Gangway Cargo and Coaling Ports:—

Nie

Particulars of Scuppers and Sanitary Discharge Pipes:— No Scuppers or soil & sanitary pipes from spaces below Freeboard Deck Discharge overboard.

All scuppers, soil & sanitary pipes from spaces above freeboard deck provided with automatic non return valves fitted on the ships sides. Scuppers: pipes of steel & valve chests of bronze. 4" soil pipes of <sup>steel</sup> lead & automatic non return valves, casing of ~~cast~~ <sup>these</sup> pipes & valves ~~cast~~ <sup>bronze</sup> (arrangements have been made for raising & made pipes of steel & valve chests of bronze or cast steel & when fitted it will be duly reported.)

Particulars of Side Scuttles:— No side lights fitted below freeboard Deck.  
Side scuttles in Fore & Poop Sides 10½" diameter, brass framed, fitted with hinged dead lights.

Vertical distance of Sill of lowest Side Scuttle above top of keel.....36'-6"

Particulars of Guard Rails:— On Upper Deck : Height above Deck 4'-0", stanchions of malleable cast iron  $\text{I}$  2" x 2 1/2" spaced about 4'-0" apart, 3 rails spaced 12" apart; top rail 1 1/4" dia tube, 2nd & 3rd rails 1" dia pipe.

On Superstructure Decks : Height above Deck 3'-5", stanchions of malleable cast iron  $\text{I}$  2" x 2 1/4" spaced 3'-6" to 4'-0" apart, 2 rails spaced 18" apart; Top rail 1 1/4" dia pipe, 2nd rail 1" dia pipe.

Particulars of Gangways, Lifelines, etc.:

*Gangway from File to Bridge Deck*

Top rail 1 1/4" dia Tube  
Wood planks  
3'-2"  $\frac{1}{8}$ " dia solid round rail  
[ 9' x 3 1/2" x 36  
O.A. 3' x 36  
O.A. 2' x 28  
O.A. 3 1/2' x 3 1/2" x 32

*Suitable O.A. bracing fitted 2 1/2" x 2 1/2" x 32" angle  
fitted diagonally  
Covered another rail?*

Spacing of Gangway supports  
about 8'-6" apart.

Upp. DK

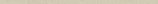
*Gangway from Bridge to Roof Deck*

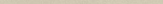
Top Rail?  
[ 6' x 2' x 32  
[ 9' x 3 1/2" x 36  
O.A. 3 1/2' x 3 1/2" x 3  
O.A. 3' x 36

TRUNK TOP

Upp. DK.

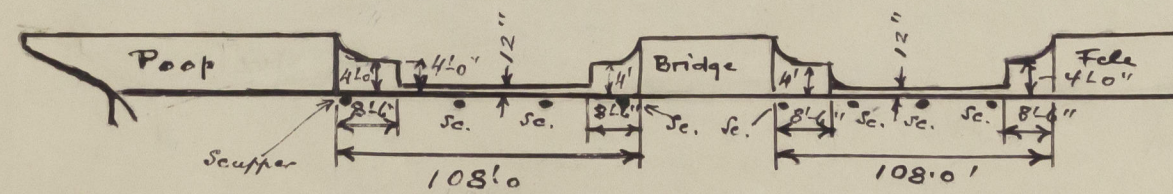
Particulars of Freeing Arrangements.						
	Length of Bulwark	Height of Bulwark	Size of Freeing Ports	Number each side	Area each side	Rule area each side
After Well ... ..	<i>See sketch below</i>	4' 0"	<i>open rails</i>	<i>See sketch below</i>		
Forward Well ... ..		4' 0"				

State position of each freeing port ... .. ( After Well :—  )

(F. and A. position and height above deck edge) { Forward Well:—  She

State whether the freeing ports are fitted with shutters, bars, or rails, and give particulars of such:—

Additional area where sheer is less than standard.





# PARTICULARS OF PROTECTION TO OPENINGS, ETC.

HATCHWAYS ON FREEBOARD AND SUPERSTRUCTURE DECKS.										
ON UPPER DECK										
ON TRUNK TOP										
ON POOP DECK										
Description of Hatchway	Hold Hatch	MAIN CARGO TANKS AND SUMMER TKS 12 off	Summer Tks No 2 2 off	HOLD ACCESS 1 off	COFFERDAM FRD 2 off	MAIN CARGO TANKS AND OIL BUNKERS 12 off	COFFERDAM AFT 2 off	Coal Hatch 1 off	Coal Hatch 2 off	
Dimensions of Hatchway	8'-0" x 15'-0"	6'-0" x 4'-0"	4'-0" x 4'-0"	21" DIA.	23" DIA	6'-0" x 4'-0"	21" DIA	5'-6" x 13'-6"	4'-0" x 3'-0"	
COAMINGS	Height above Deck	31"	27 1/2"	27 1/2"	21"	24"	9"	3"	30"	30"
	Thickness	.42	.40	.40	.44	.44	9x3 1/2 x 4 1/2	0.9	.40	.40
	Stiffeners	42	.40	.40	Round	.44	5x3x5 1/2		.40	.40
	Brackets, Stays	NONE								
HATCH BEAMS	Number									
	Spacing									
	Scantling and Sketch									
	Bearing Surface									
FORE AND AFTERS	Number	2							2	
	Spacing	5'-0"							4'-6"	
	Unsupported Lengths	3'-0"							5'-6"	
	Scantling* and Sketch	3x4x4 1/2							3x4x4 1/2	
HATCH COVERS	Material	Steel plate	Steel plate	Steel plate	Malleable CAST IRON	Malleable CAST IRON	Steel plate	Malleable CAST IRON	White pine	Steel plate
	Thickness	.40	.40	.40	.60	.60	.40	.60	3"	.40
	How fitted	Hinged	HINGED	HINGED	Hinged	HINGED	HINGED	Hinged	TRANSV.	Hinged
	Bearing Surface	Waterlight	OIL TIGHT	OIL TIGHT	W. T. PACKING	W. T. PACKING	OIL TIGHT	OIL TIGHT	3"	W. TIGHT PACKING
Spacing of Cleats or fastenings	24"	24"	24"	3 butterfly nuts	3 butterfly nuts	2 1/4"	3 butterfly nuts	19"-24"	20"-24"	
Number of Tarpaulins										

\*Are wood fore and afters steel shod at all bearing surfaces? yes

Are battens and wedges efficient and in good condition? yes

Are tarpaulins in good condition and in accordance with rule requirements? yes

Are lashings provided in accordance with rule requirements? yes

Particulars of any special features:— oil Tanker, with Trunk shaft No 3 Main cargo Tank — Centre line Bulkhead and Summer Tanks.

Adequate stiffeners fitted to .40" thick hatch covers (by angle bars and/or welded flat bars).

Endorsement at first survey and at surveys for renewal of Certificate:—

The fittings and appliances are in accordance with the particulars shown on this form (or as now modified) and are in good condition.



© 2020

Lloyd's Register Foundation