

Lloyd's Register of Shipping.

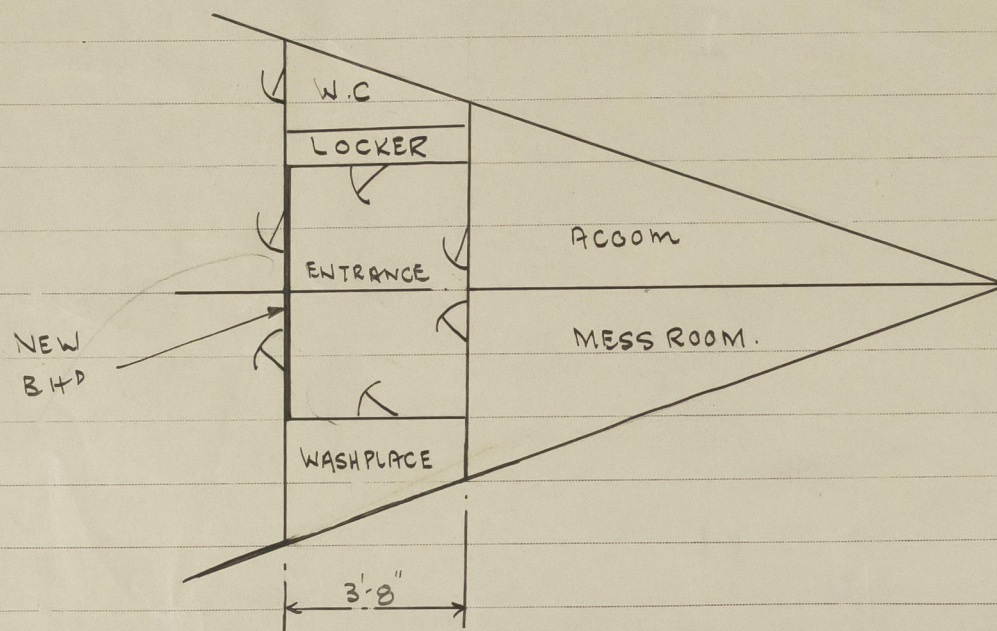
Ship's Name "ROTHER"

Official No. 128883

Memorandum of alterations reported since ship was surveyed for assignment of Load Lines in

Fore front now plated in between after bulkheads of side houses 3'8" aft of original bulkhead (which remains). ✓

Plating .25", stiffeners 2½" x 3/8" F.B. spaced 21" - 30" apart, welded to bulkhead and deck at bottom only (sniped at top). Fore front now having 3 hinged wood doors 4'9" x 22" x 17" sill with spring locks manipulated both sides, (2 hinged wood doors 4'9" x 22" x 18" sill remain on original bulkhead) ✓



Poep front bulkhead fitted with hinged wood door at middleline of ship 4'7" x 28" x 18" sill, with spring lock manipulated from both sides. ✓

Companion strongly constructed of steel fitted on Poep Deck leading to accommodation below, fitted with hinged wood door 4'0" x 24" x 20" sill, with spring lock manipulated from both sides. ✓

Freeing ports 23'0" aft of Bridge Front (p.s.) permanently closed. ?

Compensated by fitting additional Port (P.S.) 1'6" x 1'6"

R.S. Piddington

GRIMSBY: 15th January, 1948.

Noted.
See Later on (contd.)
dated 20/1/48.
[Signature]
 21 JAN 1948