

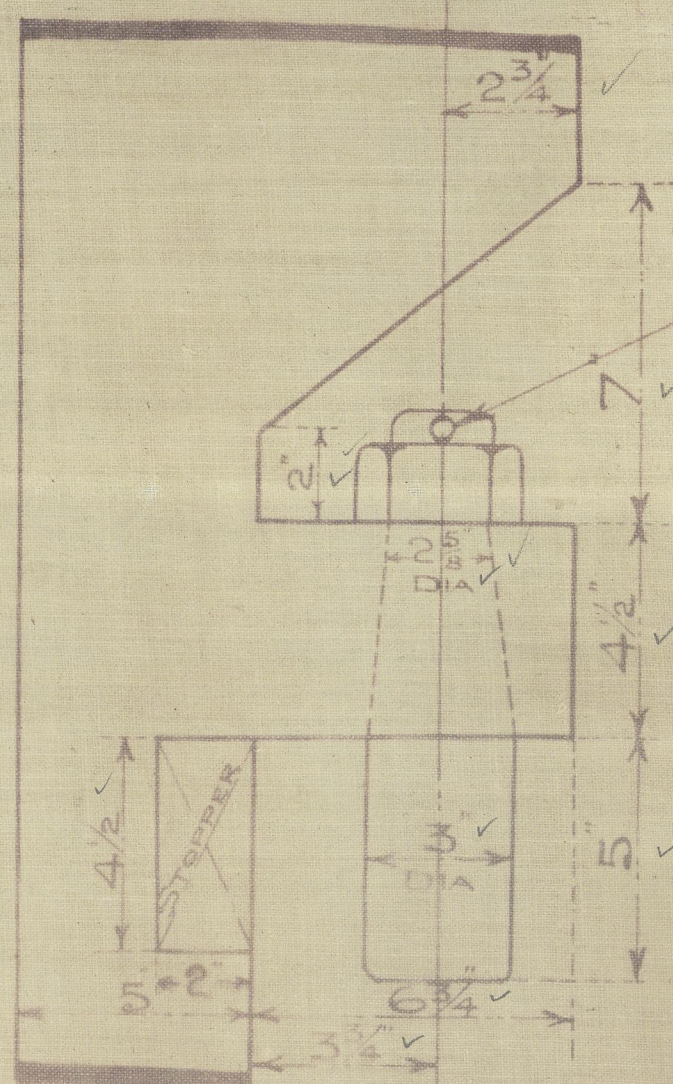
# RUDDER

HOLES FOR  $\frac{7}{8}$ " DIA RIVETS DRILLED ✓

5 DIAR<sup>s</sup> APART ✓

SCALE  $\frac{3}{4}" = 1 \text{ FOOT}$  ✓

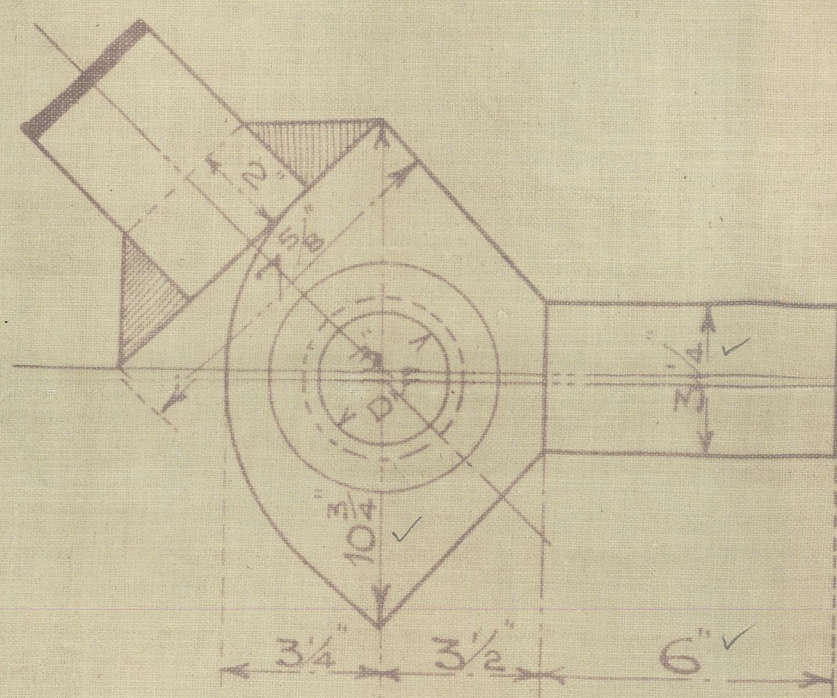
SPLIT PIN FITTED  
ABOVE NUT ✓



ENLARGED VIEW OF PINTLES

NOTE:- THESE PINTLES ARE LOOSE CARE TO BE ✓  
TAKEN THAT THE CENTRES OF PINTLES IN ✓  
RUDDER ARE IN LINE WITH THE CENTRES ✓  
OF HOLES IN STERN FRAME. ✓

- ✓ AREA OF RUDDER 42.5 SQ FT
- ✓ CG " " 2.13'
- ✓ NUMERAL FOR RUDDER
- ✓ A x D = 90
- ✓ SPEED NOT EXCEEDING 16
- ✓ 12 KNOTS.



ENLARGED VIEW OF STOPPER.

RUDDER TO HEEL OVER TO AN ANGLE OF  $45^\circ$  EXACTLY. ✓

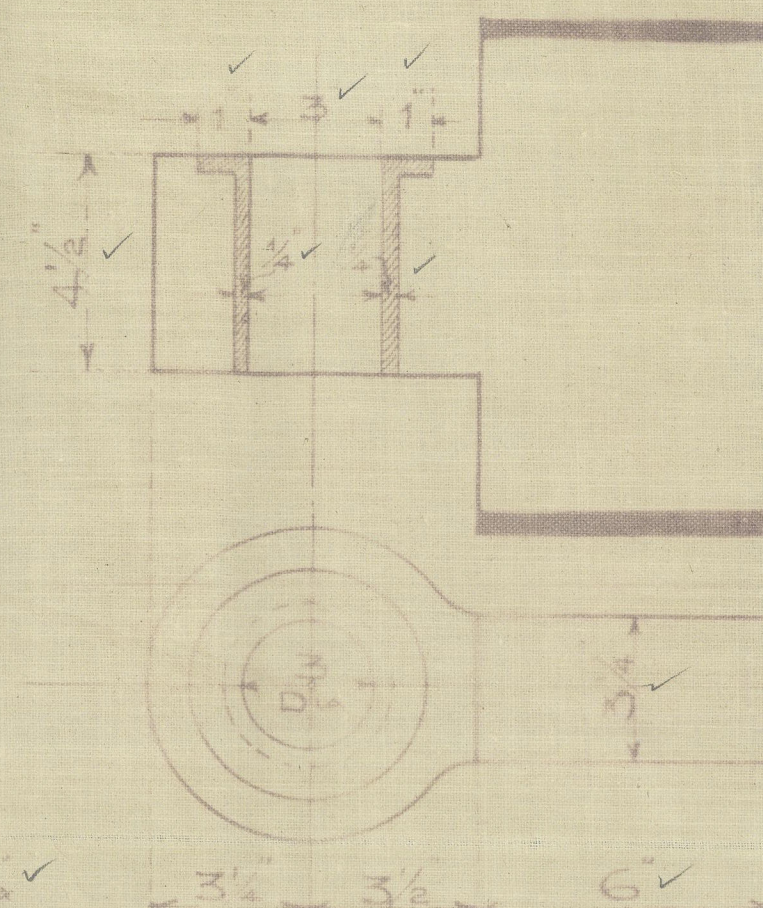
N<sup>OS</sup> 526-7.

COOK WELTON & GEMMELL LTD  
SHIPBUILDERS  
BEVERLEY

# STERNFRAME.

HOLES PITCHED  $1\frac{3}{4}$ " & 2" FROM INNER EDGE OF POST.  
HOLES DRILLED FOR 1" DIA RIVETS 5" DIA APART.

SCALE  $\frac{3}{4}" = 1 \text{ FOOT}$



ENLARGED VIEW OF STEEL BUSHES

NOTE. HOLE BORED ✓  
EXACTLY TO SIZE ✓  
GIVEN VIZ  $13\frac{7}{8}$ " DIA.

W.S.  
22.4.29



Cook, Welton & Gemmell  
Beverley -  
Stern frame & Rudder  
Nos. 526-~~7~~

3.S. Galvani

HULL REF 40736



© 2020

Lloyd's Register  
Foundation

002305-002319-0233