



HOLES FOR $\frac{7}{8}$ " DIA RIVETS DRILLED

5 DIAS APART

SCALE $\frac{3}{4}" = 1 \text{ FOOT.}$



NOTE - THESE PINTLES ARE LOOSE. CARE TO BE TAKEN THAT THE CENTRES OF PINTLES IN RUDDER ARE IN LINE WITH THE CENTRES OF HOLES IN STERN FRAME.

AREA OF RUDDER 42.5 SQ FT.
CG " 2.13'

NUMERAL FOR RUDDER

$$A \times D = 90$$

SPEED NOT EXCEEDING
12 KNOTS.



RUBBER TO HEEL OVER TO AN ANGLE OF 45° EXACTLY.

SUBMITTED TO LLOYDS

APPROVED By LLOYDS

NOS

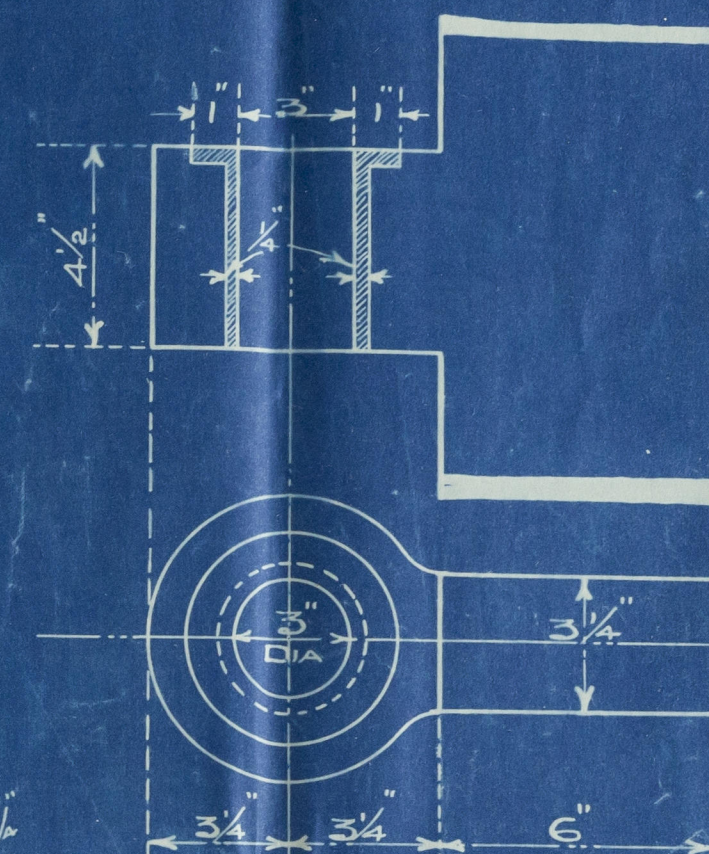
COOK WELTON & GEMMELL LTD

SHIPBUILDERS

BEVERLEY.

HOLES PITCHED $1\frac{3}{4}$ " & 2" FROM INNER EDGE OF POST.
HOLES DRILLED FOR 1" DIA RIVETS 5 DIAS APART.

SCALE $\frac{3}{4}" = 1 \text{ FOOT}$



ENLARGED VIEW OF STEEL BUSHES



NOTE. HOLE BORED
EXACTLY TO SIZE
GIVEN VIZ $1\frac{3}{8}$ DIA.

9-3
CENTRE OF SHAFT
ABOVE TOP OF VEE

SCARPH ON
RESCUE SITE

3/8" CHECK

3/8 CHER

Book. Walton + Gemmell & Co.

Stem Frame Reader

No 289

ST MELANTE



© 2020

Lloyd's Register
Foundation

002305-002319-0141