

# MATERIAL ORDER FOR FRAMING IN C<sup>T</sup> TANKS

Bottom Transverse				Side Transverse			
ST	1	12	35.15	43	40	37	30
2	12	35.15	43	40	37	30	30
3	12	35.15	43	40	37	30	30
Side Transverse				Top Transverse			
ST	1	12	35.15	43	40	37	30
2	12	35.15	43	40	37	30	30
3	12	35.15	43	40	37	30	30
Top Transverse				Side Transverse			
ST	1	12	35.15	43	40	37	30
2	12	35.15	43	40	37	30	30
3	12	35.15	43	40	37	30	30
Bottom Transverse				Side Transverse			
ST	1	12	35.15	43	40	37	30
2	12	35.15	43	40	37	30	30
3	12	35.15	43	40	37	30	30

T.S.S. No 50.

## MIDSHIP SECTION

SCALE 1/2" = 1 FOOT

LENGTH 335' 0" BP x 56' 0" MLD x 14' 9 1/2" TO UPPER DK

CLASS LLOYDS 100A1 FOR CARRYING PETROLEUM IN BULK

DRAFT FULL

INCREASES FOR SHEER & SCANTLING AND ARRANGEMENTS CLEAR OF CARGO TANKS TO BE SUBMITTED

SEE LETTER RE SPECIAL NOTATION FOR LONGITUDINAL FRAMING

### SECTION SHEWING WEB FRAMES

ON NO 48.52.62.66.76.80.90.94.104

108.118 x 122

ALL BULK ANGLE & CHANNEL SECTIONS ARE

N.B. UNLESS MARKED OTHERWISE

COMPENSATION IN WAY OF OPENINGS TO BE CONSIDERED

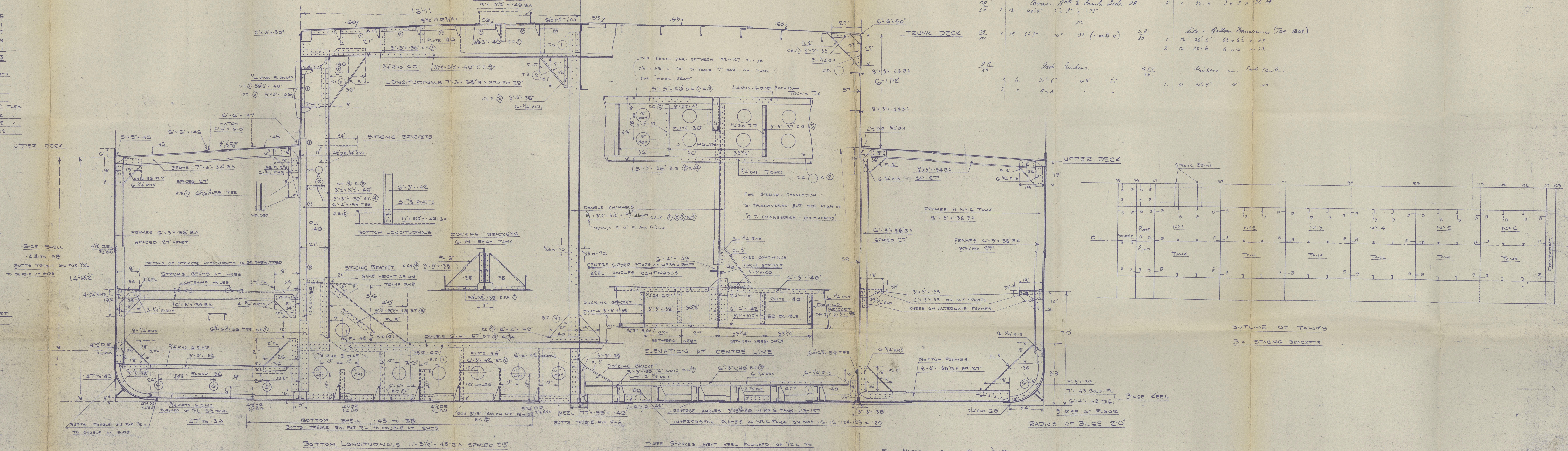
ROUND OF BEAM 14"

### SECTION THRO' TANKS

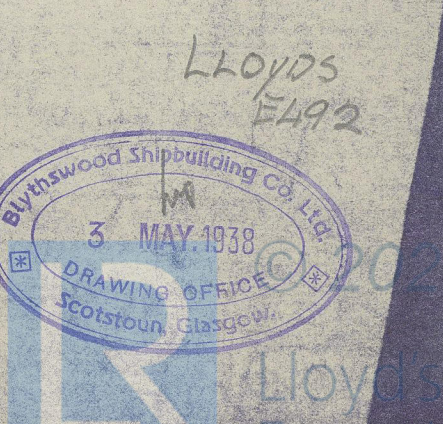
NUMERALS	
D	14.79
L/D	4855
L(B+D)	23715
L	22.05

EQUIPMENT	
335 - (36 x 14.79)	23715
FOUR 425 x 75 x 7.25	431
FOUR 9.5 x 75 x 7.25	431
TRUNK 131 x 5 x 10.25	699
FOUR 605 x 75 x 7.5	391
	25533

3 ANCHOR STOCKS EACH	48 1/2 CENTS
1 STEAM EX STOCK	10 1/4 "
1 EDGE	8 1/2 "
2 TO PATHONS 2 STUD CHAIN CABLE	
90	4 1/2 STEAM STEEL WIRE 6-12 FLY
100	4 TOWLINE 6-12
2000	2 1/2 HANDBAR 6-12
2000	2 1/2 WARRS 6-12



NOTE: ALL BEAMS & FRAMES LOOK FOR FROM STERN TO 71 BULK? AFT - STEM TO 71 BULK?





Blythwood S. B. Co. Ltd

Nº 50.

T/S. "RAFAELA"

Midship Section.

(as built).

GLASGOW REPORT No 59970



© 2020

Lloyd's Register  
Foundation

002305-002319-0111