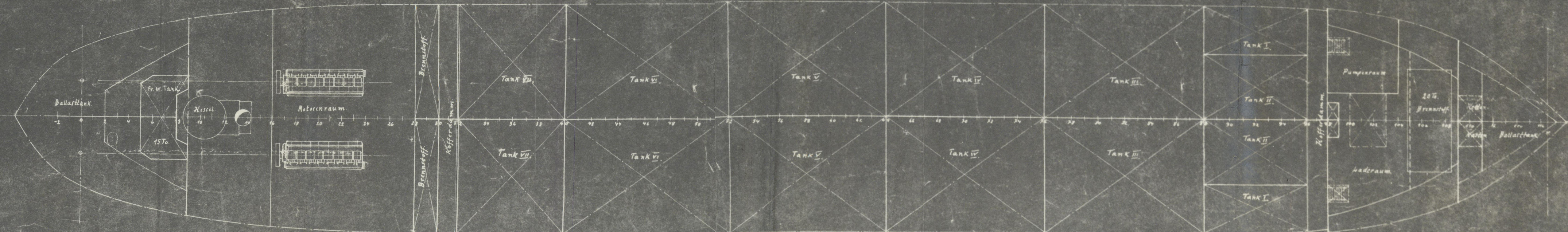
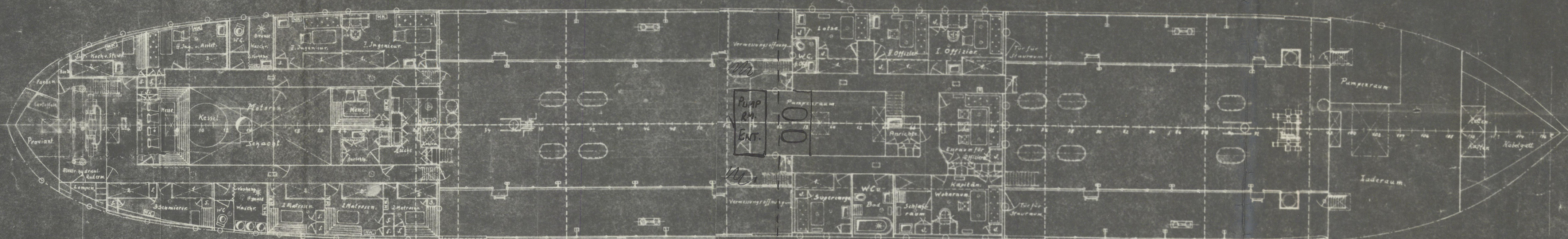
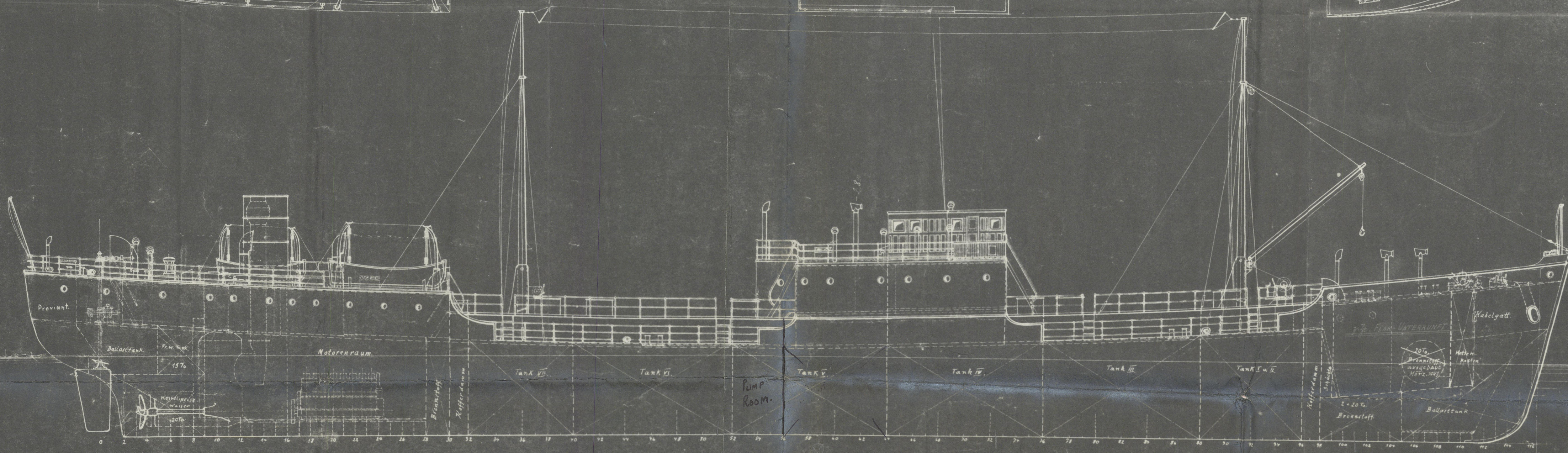
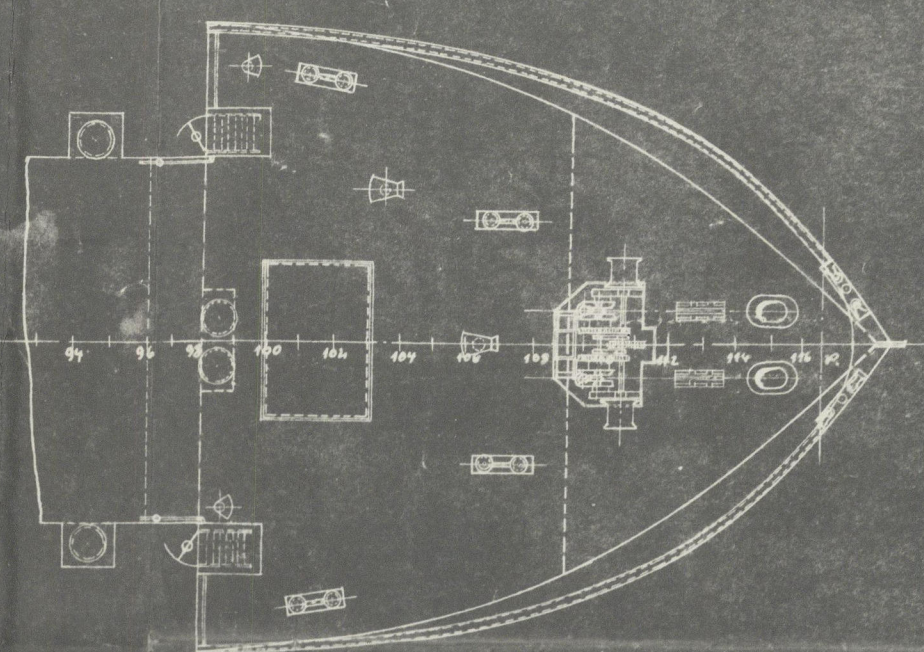
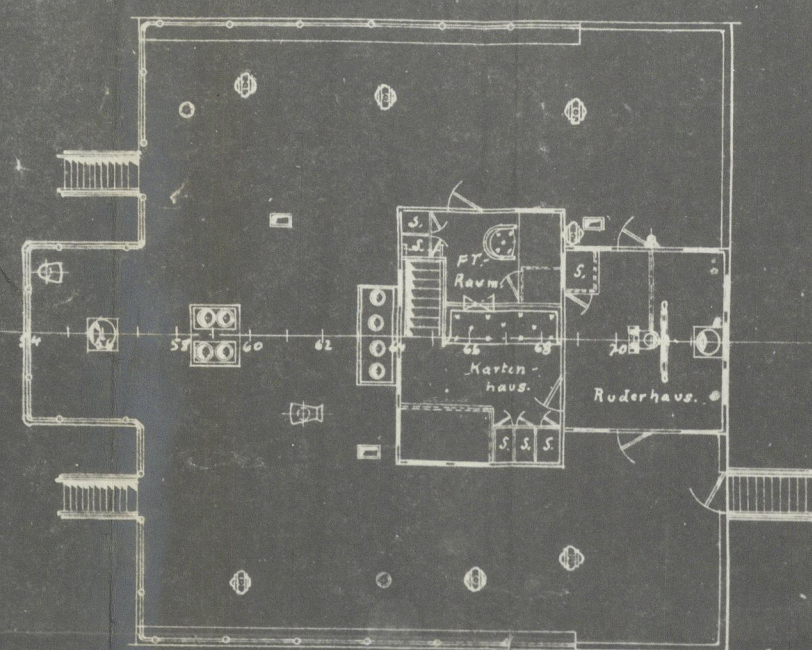
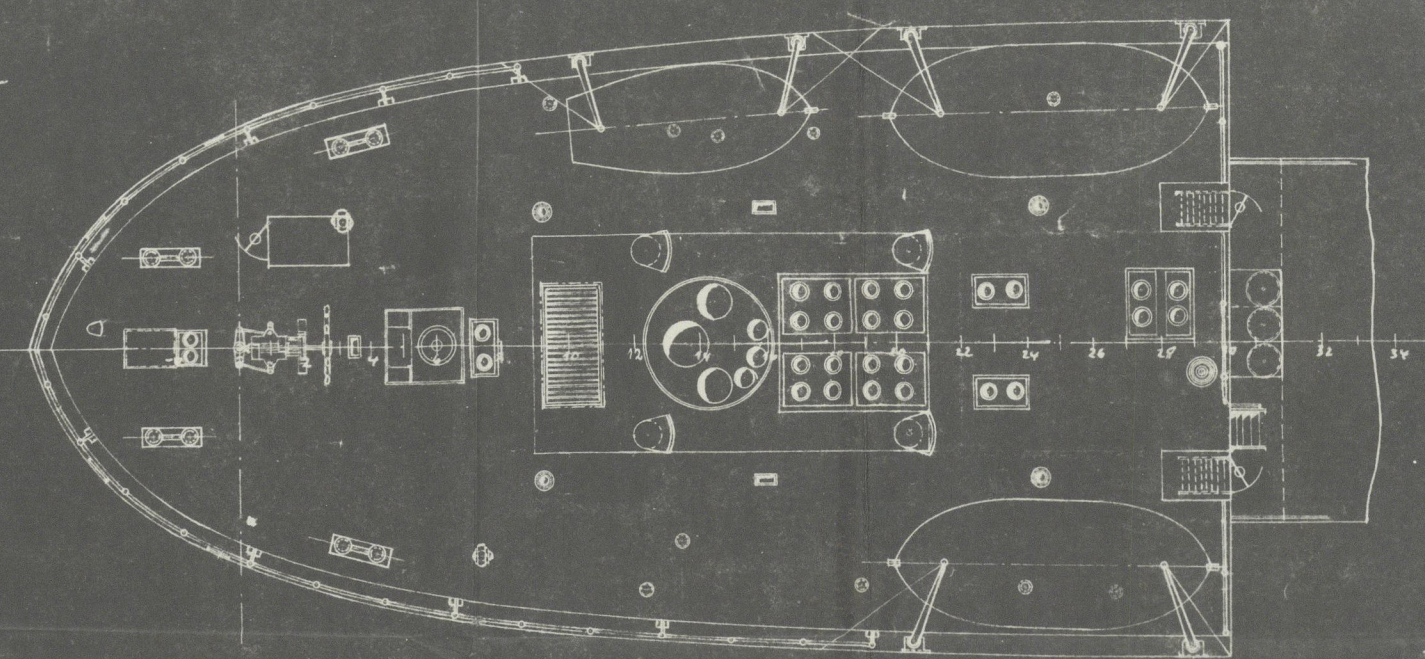


M.S. 225.

Motor-Tankschiff.

1:100.

Länge zw. d. Loten 69,00 m
Breite a. Spant 10,50 m
Höhe b. Hauptdeck 4,20 m
Tiefgang beladen ca 3,81 m



Empire Tegambria ex Hermann
Andersen
line 123670.

N.N. "PASS OF BRANDER" ❄

& General arr.

1

6/226-4
37-9
37-9
75-1

168/69/89
20/81/10/19
20/81/10/19



© 2021

Lloyd's Register
Foundation