

No 592G.

MAIN DECK & RAISED DECK.

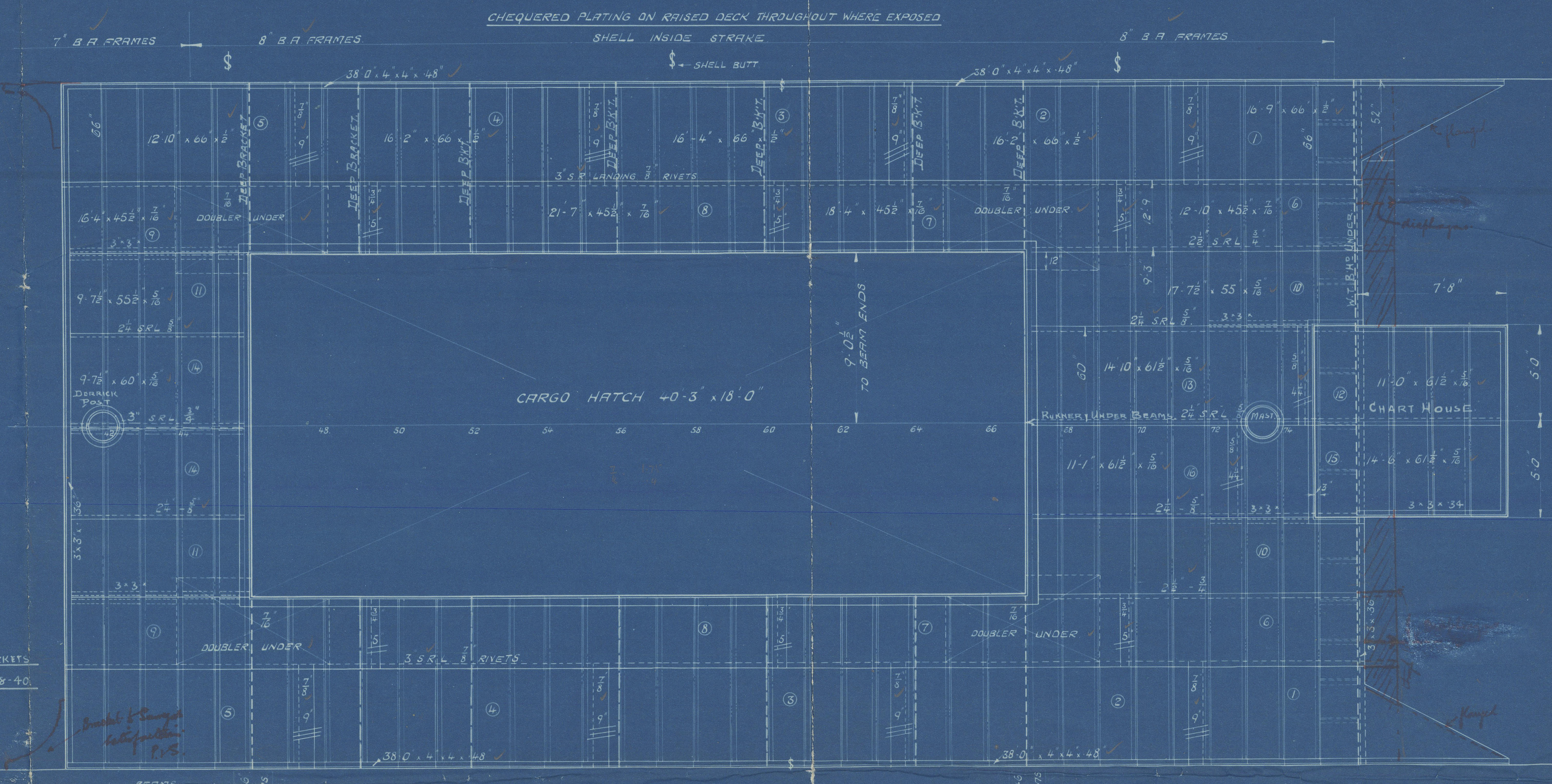
SCALE $\frac{1}{4}'' = 1$ FOOT.

PLATING THROUGHOUT TO BE JOGGLED

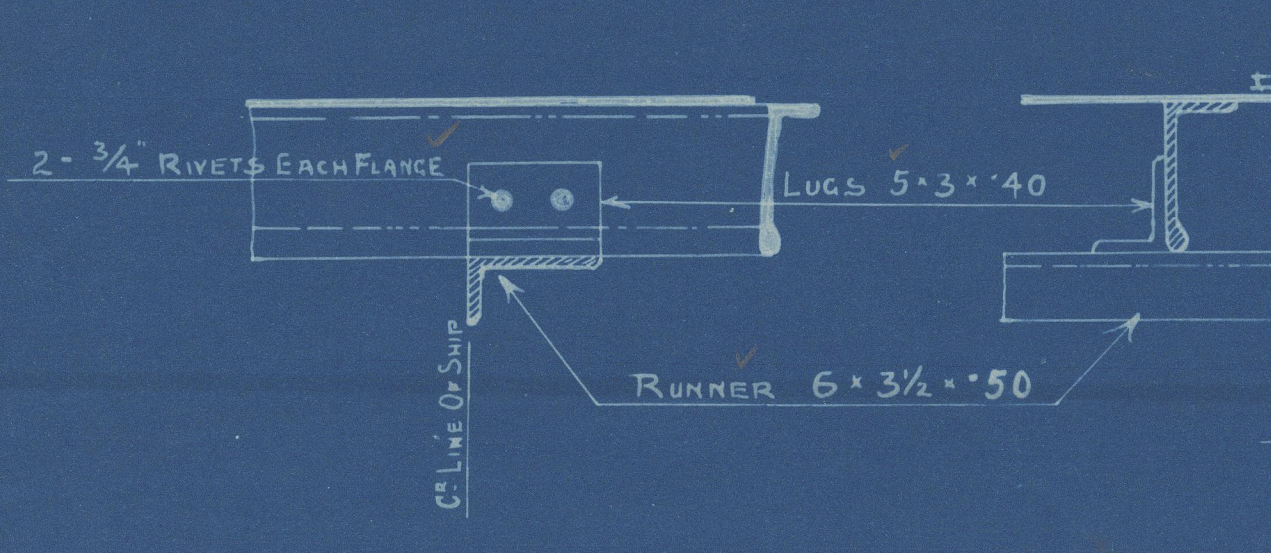
RIVETING LIST

DESCRIPTION	DIA.	PITCH	HEAD	POINT
STINGER TO BEAMS	$\frac{3}{8}$ "	6"	PN	FLUSH
DECK TO BEAMS	$\frac{3}{8}$ "	6"	PN	FLUSH
STINGER BEAMS	$\frac{3}{8}$ "	6"	PN	FLUSH
DECK BEAMS	$\frac{3}{8}$ "	6"	PN	FLUSH
STINGER BUTTS	$\frac{3}{8}$ "	6"	PN	FLUSH
DECK BUTTS	$\frac{3}{8}$ "	6"	PN	FLUSH
Beams to Stinger Deck (32-40)	$\frac{3}{8}$ "	6"	PN	FLUSH
HATCH COAMING BARS TO DECK	$\frac{3}{8}$ "	3"	PN	FLUSH
DECKHOUSE BARS TO DECK	$\frac{3}{8}$ "	3"	PN	FLUSH
CASING BARS TO DECK	$\frac{3}{8}$ "	3"	PN	FLUSH
STINGER CHECKS TO DECK MAIN DS	$\frac{3}{8}$ "	5"	PN	BATT
STINGER BARS TO DECK MAIN DS	$\frac{3}{8}$ "	5"	PN	BATT
STINGER BARS TO DECK RAISED DS	$\frac{3}{8}$ "	5"	PN	FLUSH
STINGER BARS TO DECK RAISED DS	$\frac{3}{8}$ "	5"	PN	FLUSH
STINGER BARS TO DECK RAISED DS	$\frac{3}{8}$ "	5"	PN	FLUSH
STINGER BARS TO DECK RAISED DS	$\frac{3}{8}$ "	5"	PN	FLUSH

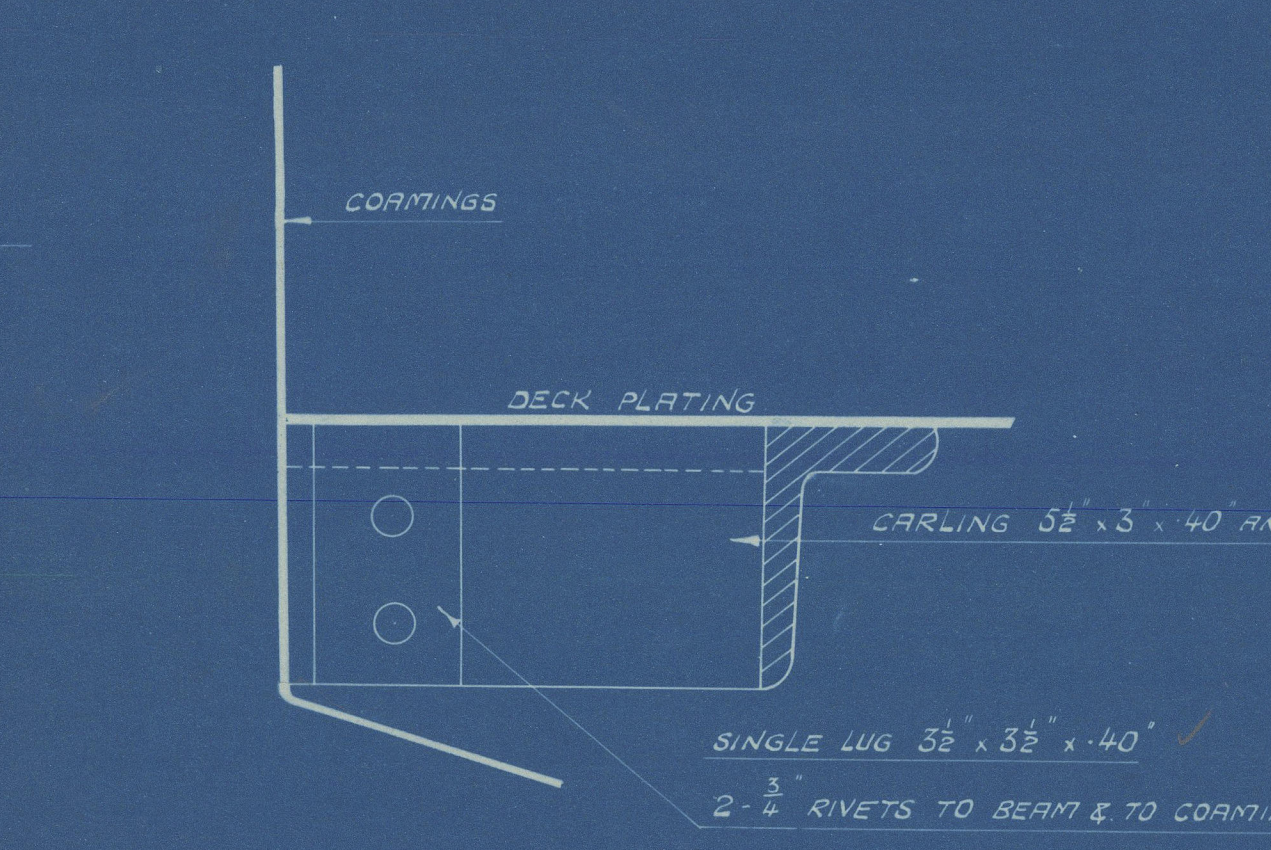
DESCRIPTION	DIA.	PITCH	HEAD	POINT
STINGER TO BEAMS	$\frac{3}{8}$ "	6"	PN	FLUSH
DECK TO BEAMS	$\frac{3}{8}$ "	6"	PN	FLUSH
STINGER BEAMS	$\frac{3}{8}$ "	6"	PN	FLUSH
DECK BEAMS	$\frac{3}{8}$ "	6"	PN	FLUSH
STINGER BUTTS	$\frac{3}{8}$ "	6"	PN	FLUSH
DECK BUTTS	$\frac{3}{8}$ "	6"	PN	FLUSH
Beams to Stinger Deck (32-40)	$\frac{3}{8}$ "	6"	PN	FLUSH
HATCH COAMING BARS TO DECK	$\frac{3}{8}$ "	3"	PN	FLUSH
DECKHOUSE BARS TO DECK	$\frac{3}{8}$ "	3"	PN	FLUSH
CASING BARS TO DECK	$\frac{3}{8}$ "	3"	PN	FLUSH
STINGER CHECKS TO DECK MAIN DS	$\frac{3}{8}$ "	5"	PN	BATT
STINGER BARS TO DECK MAIN DS	$\frac{3}{8}$ "	5"	PN	BATT
STINGER BARS TO DECK RAISED DS	$\frac{3}{8}$ "	5"	PN	FLUSH
STINGER BARS TO DECK RAISED DS	$\frac{3}{8}$ "	5"	PN	FLUSH
STINGER BARS TO DECK RAISED DS	$\frac{3}{8}$ "	5"	PN	FLUSH
STINGER BARS TO DECK RAISED DS	$\frac{3}{8}$ "	5"	PN	FLUSH



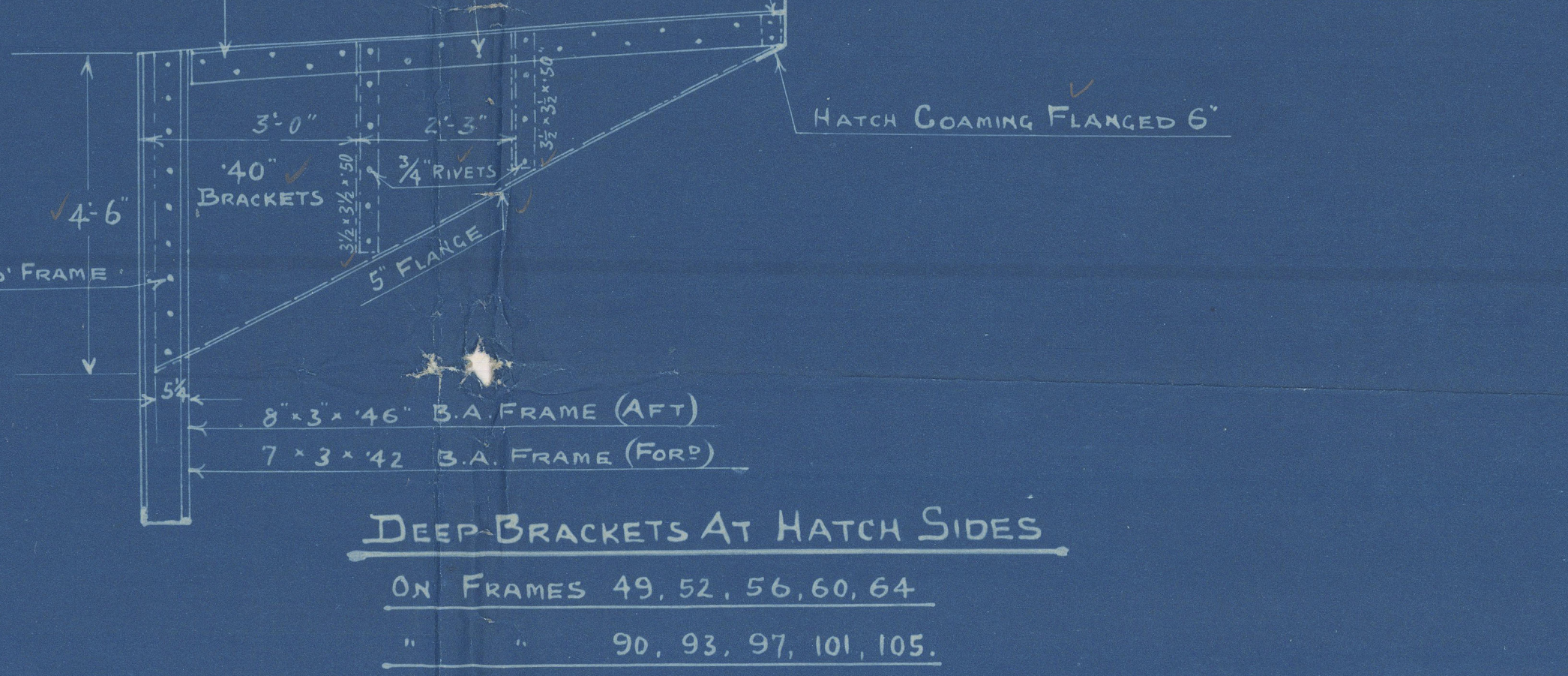
DETAIL OF RUNNER UNDER BEAMS



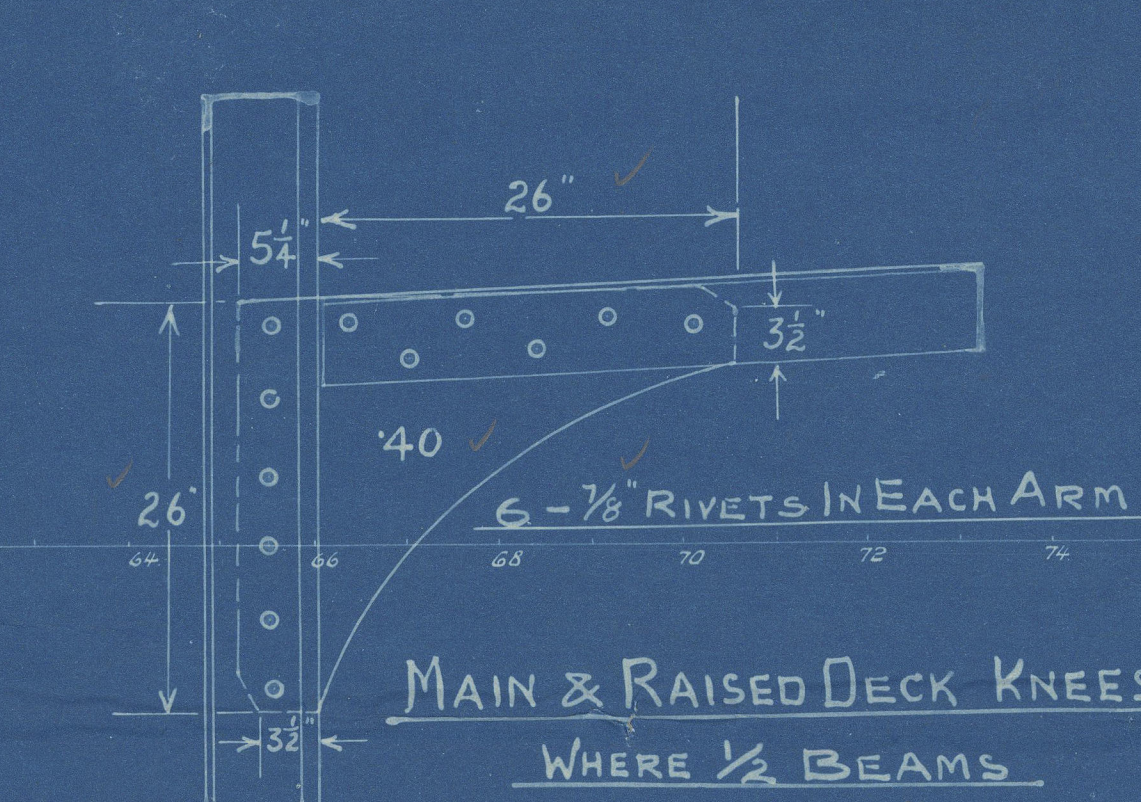
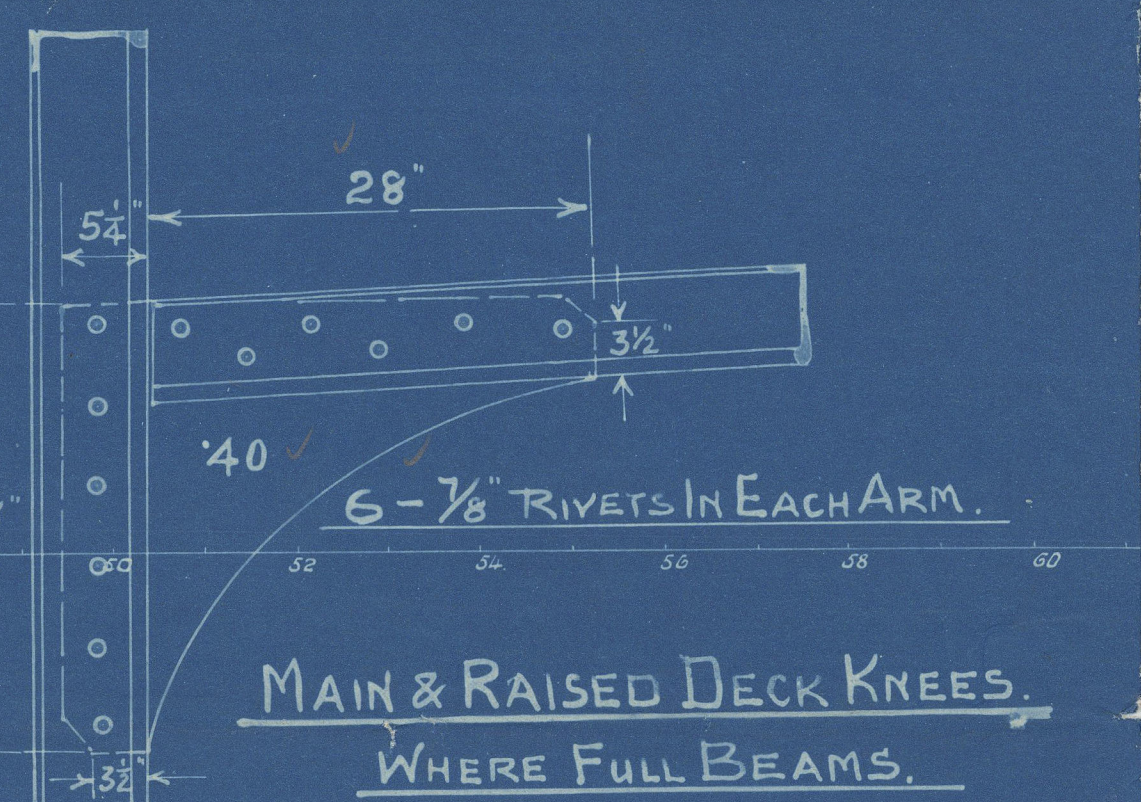
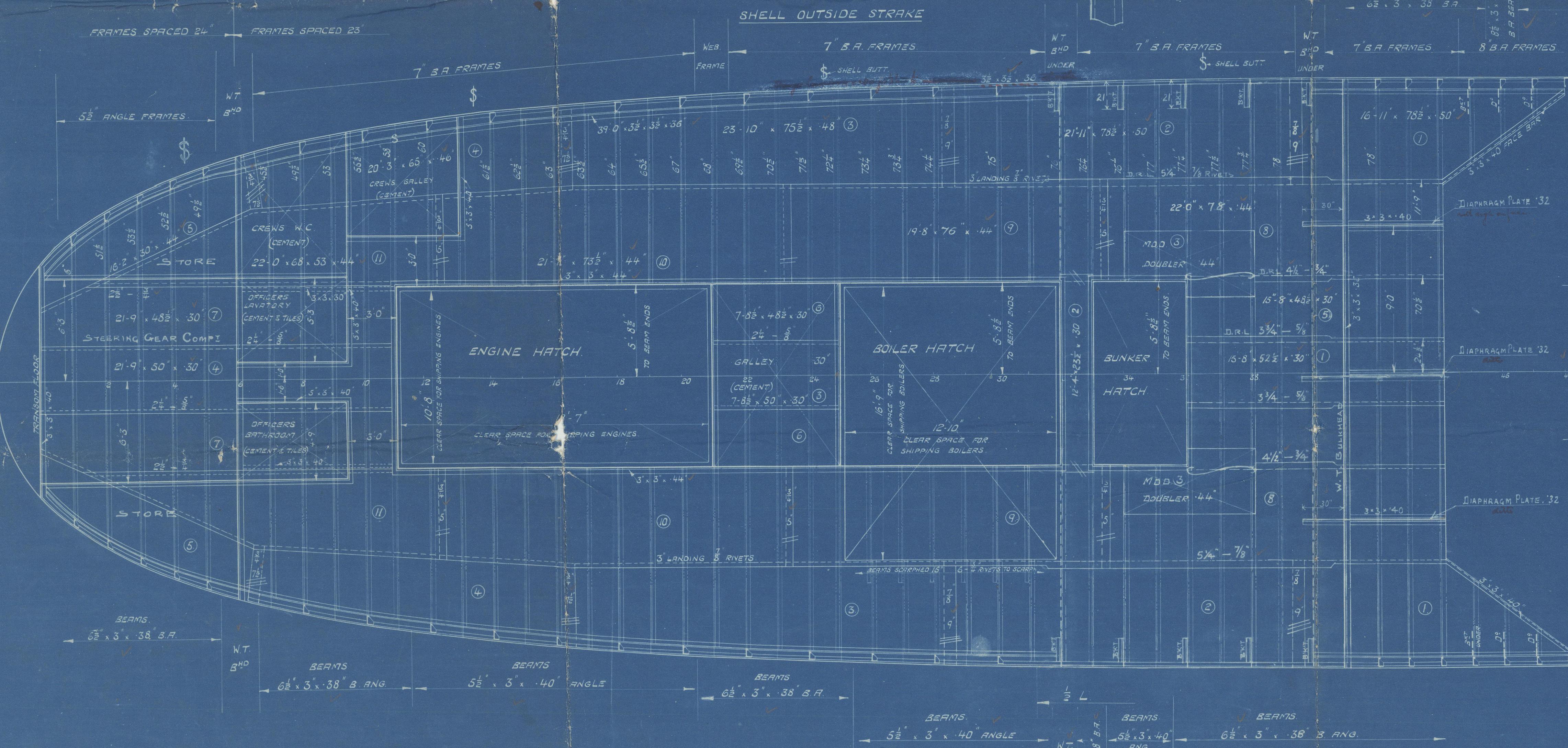
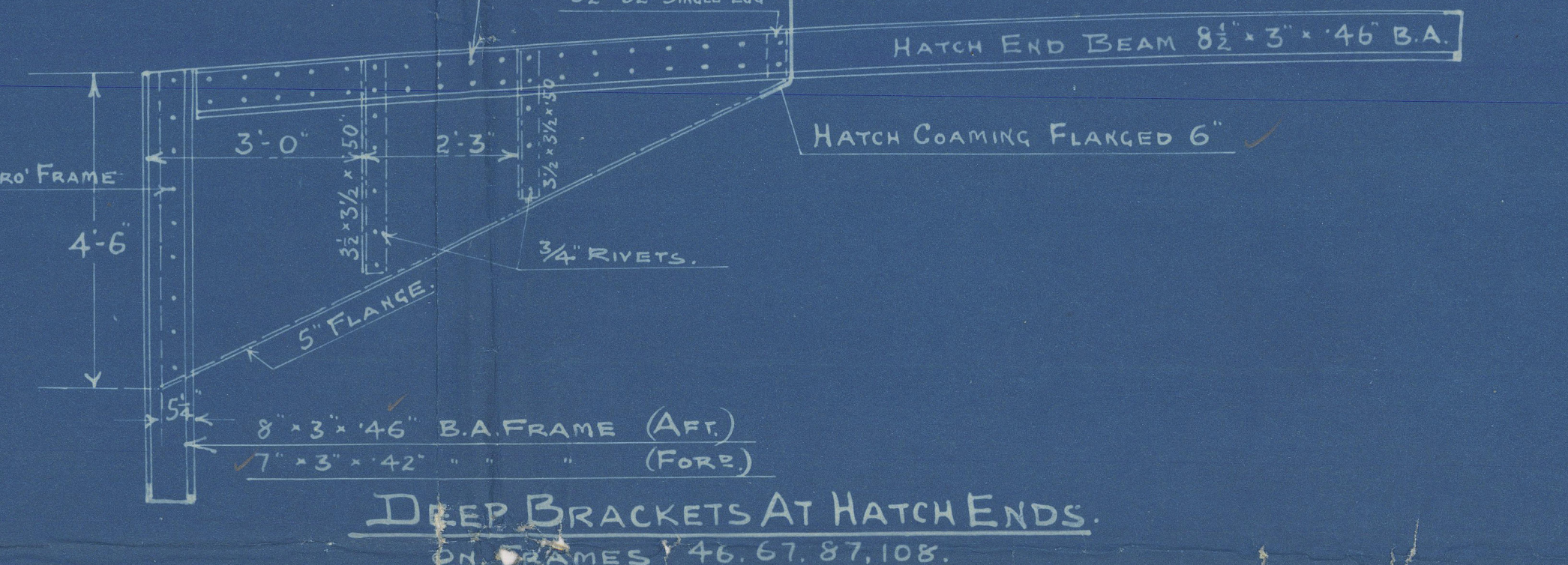
DETAIL OF CARLING CONNECTION TO HATCH COAMINGS & E&S CASING



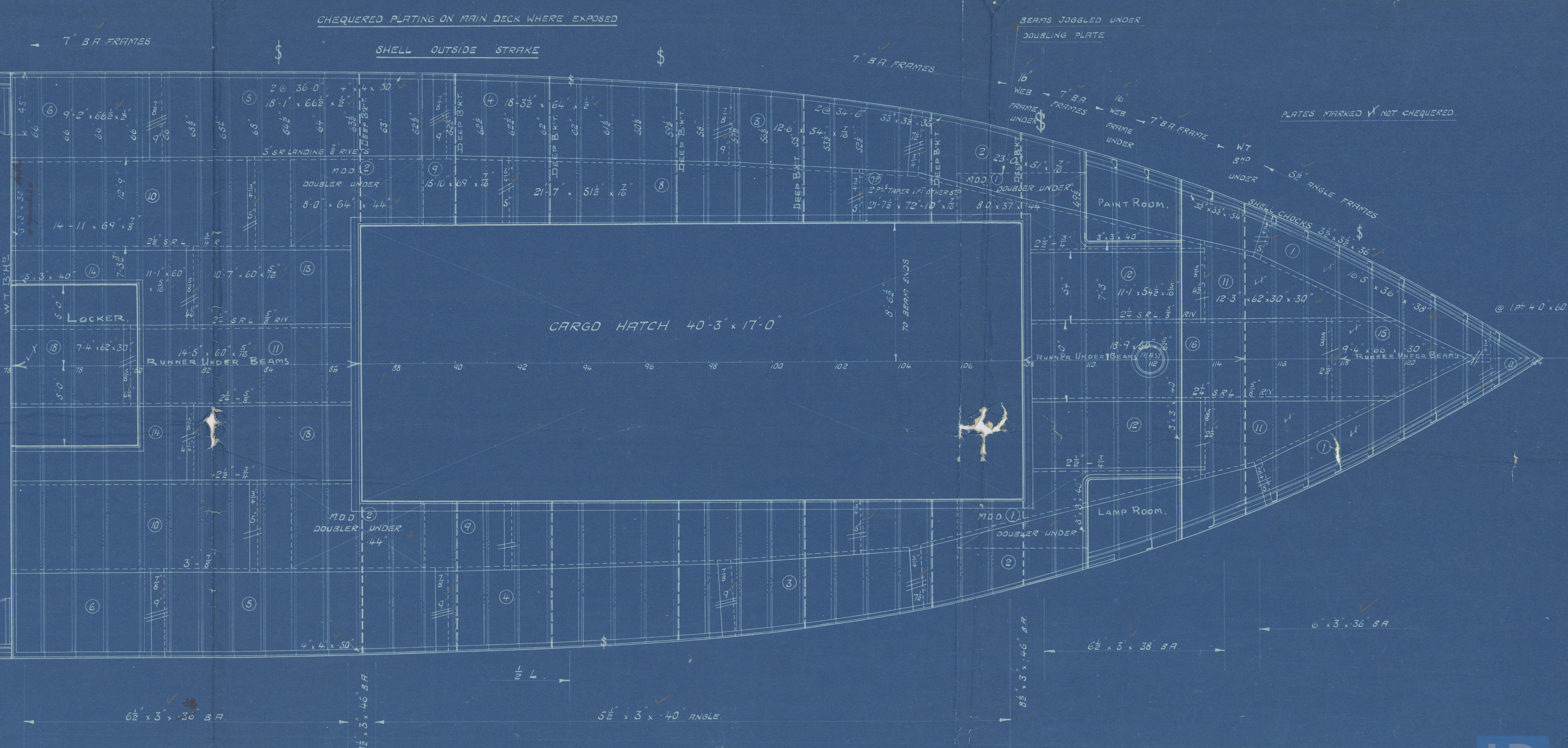
DEEP-BRACKETS AT HATCH SIDES ON FRAMES 49, 52, 56, 60, 64



DEEP-BRACKETS AT HATCH ENDS ON FRAMES 46, 67, 87, 108



APPROVED
LLOYDS REGISTER OF SHIPPING
[Signature]
DATE 28.11.1914



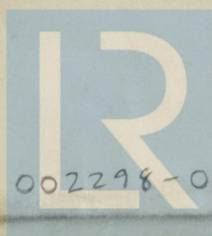
Becks (Main + R950s)

Mess Harland & Wolff to

Qw 392

GLASGOW REPORT No. 39805

1/5 Somerset Coast



© 2021

Lloyd's Register
Foundation

002298-002304-0004