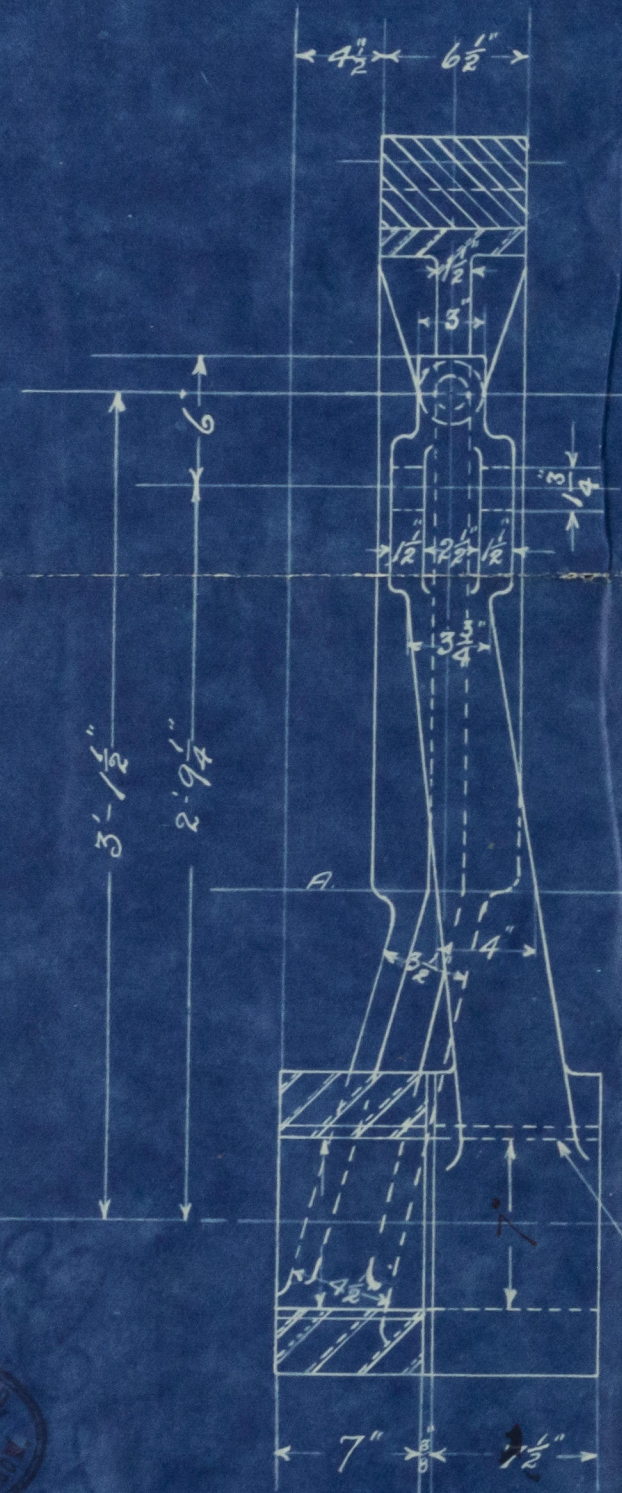
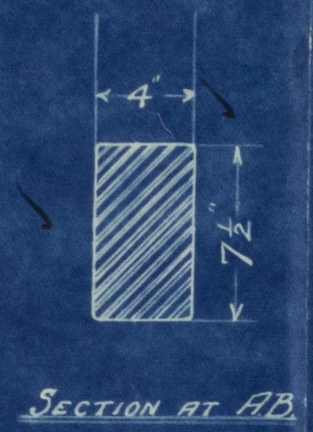
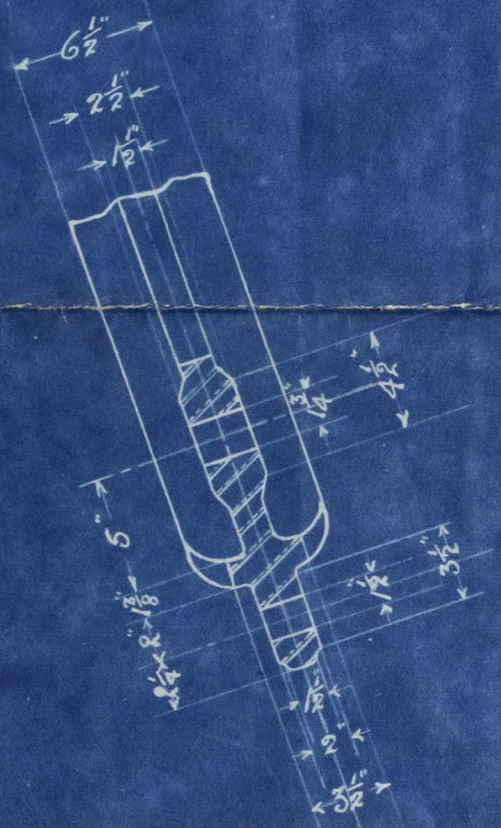
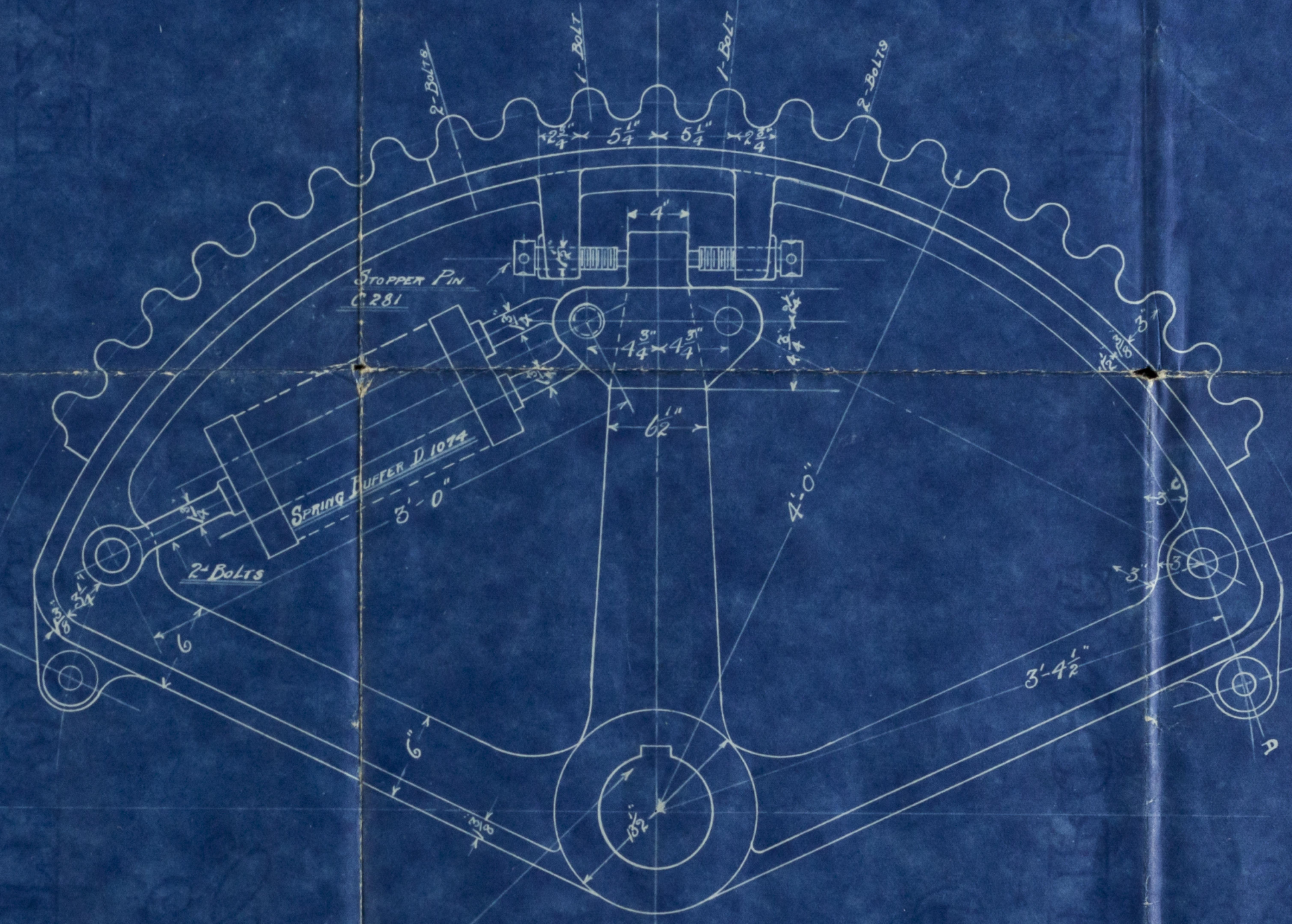
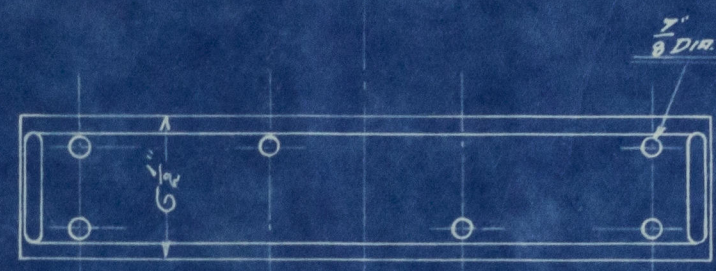


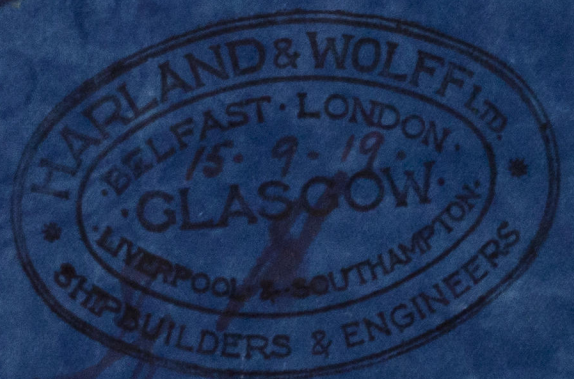
Independent means of steering to be supplied and fitted.



Key. 7/8" x 15/16" DRIVEN FROM TOP



PART	N <sup>o</sup> OFF	MATERIAL	SYMBOL OR FIN <sup>e</sup>	SECTION N <sup>o</sup>	REMARKS
QUADRANT	1	CAST STEEL		25	4'-0" RADIUS
STOPPER PINS	2	MILD STEEL	C. 281		
SEGMENTS	3	CAST IRON	D. 283		
BOLTS, NUTS, ETC.	18	MILD STEEL	F. 1072		
QUADRANT RING	1	GUMMETAL	CP. 298		D =
SPRING BUFFERS	2		D. 1074		
TILLER	1	FORGED STEEL			

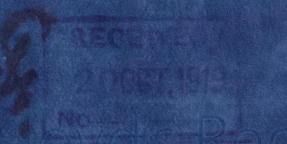
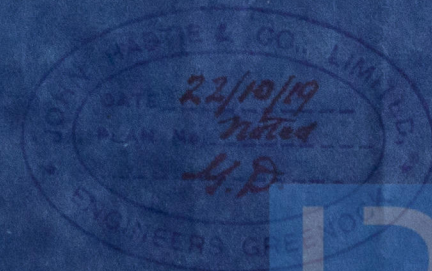
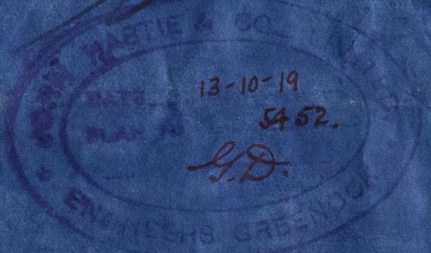


# 4-0" C. S. QUADRANT & F. S. TILLER N<sup>o</sup> 2547/S

SCALE 1/2" = 1 FOOT

S.S. N<sup>o</sup> 5926-6026 Mess<sup>rs</sup> HARRIS & WOLFF, LTD.  
MAKERS OF STEEL CASTINGS. Mess<sup>rs</sup> W. SHAW & CO. - MIDDLESBROUGH

APPROVED  
Montgomery 14.10.19



5452



Quadrant & Lillie

Mess Harland & Wolff, Ltd

No 592

GLASGOW REPORT No. 39805

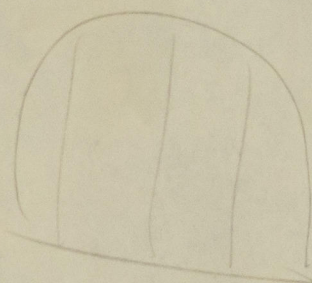
5/5 Somerset Coast



© 2021

Lloyd's Register  
Foundation

002298-002304-0001



© 2021

Lloyd's Register  
Foundation