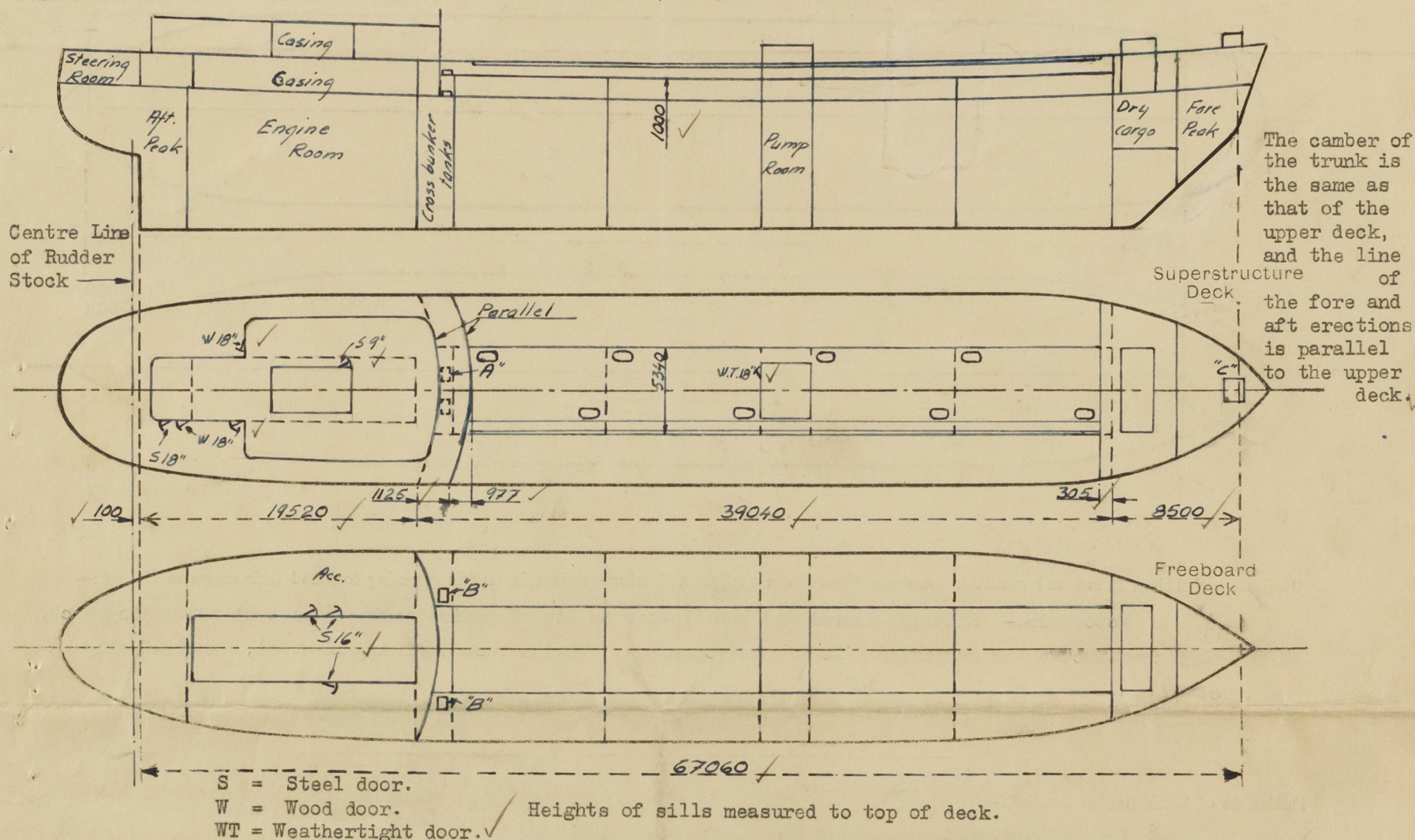


Lloyd's Register of Shipping.
SURVEYS FOR FREEBOARD.
(CONDITIONS OF ASSIGNMENT.)

22 NOV 1949

Ship's Name LINDESNÄS Port of Survey Gothenburg
Official Number 9133 Surveyor's Signature Boje Isbrand
Nationality and Port of Registry Swedish, Stockholm Date of Survey During construction

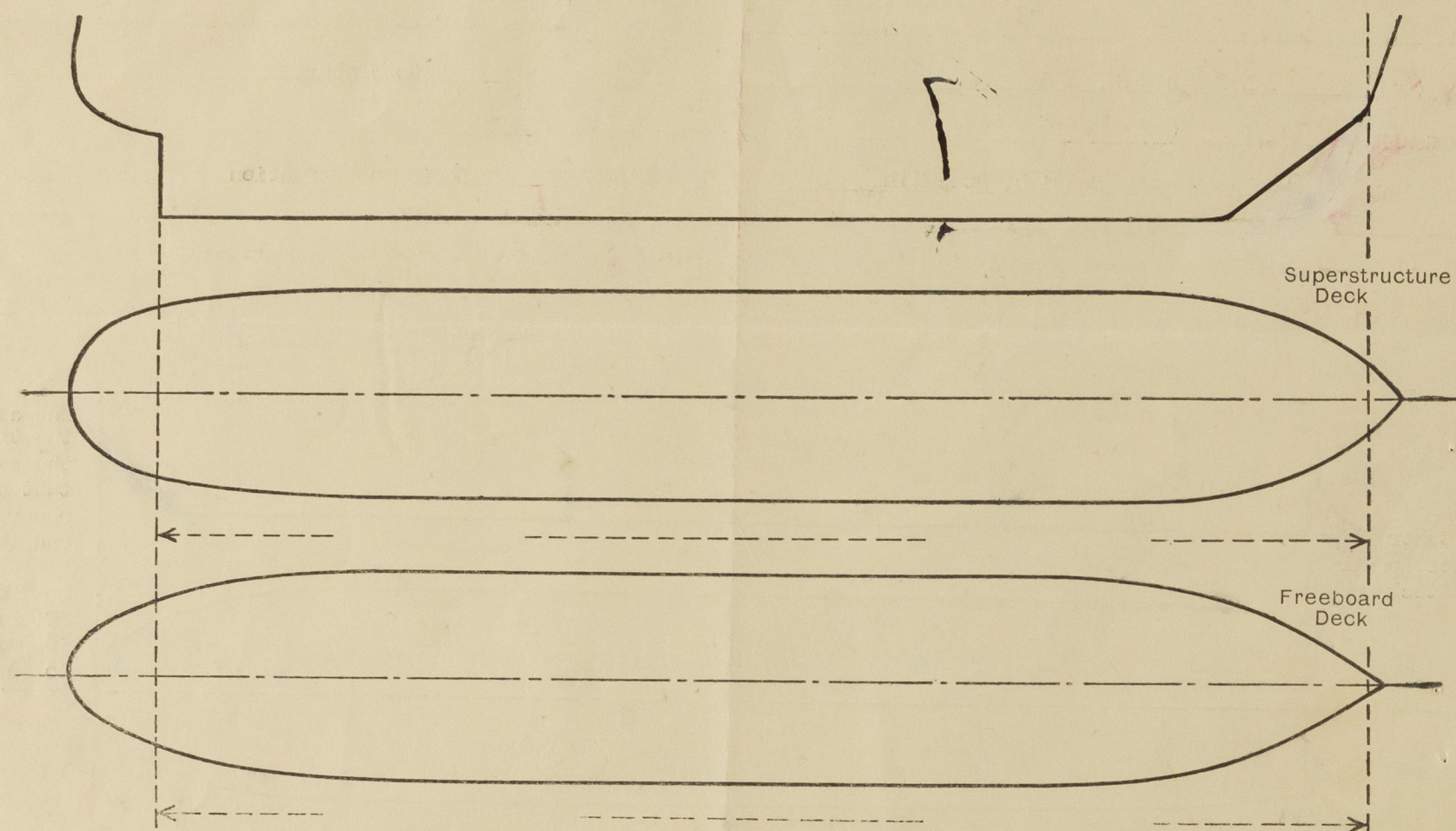
Disposition and dimensions of superstructures, trunks, deckhouses and machinery casings to be inserted in the diagrams and tabular statement:—



Particulars of Superstructures, Trunks, Casings, Deckhouses.								
	Coaming	Plating MM.	Stiffeners Ins. & MM.	Spacing MM.	End Attachments of Stiffeners	Size of Openings MM.	Height of Sills	Height of Casings
Poop Bulkhead at trunk ...	---	9.0	4" x 2 1/2" x 30	690	None bottom. Welded top.	None	---	---
Poop Bulkhead clear of trunk	---	9.0	5" x 3 1/2" x 40	720 - 830	None bottom. Welded top.	None	---	---
Pump Room	---	7.0	75 x 50 x 8	540 - 675	Welded top & btm.	680 x 1490	18"	---
Bridge, Forward Bulkhead ...	---	---	---	---	---	---	---	---
Forecastle Bulkhead at trunk ...	---	7.0	65 x 50 x 7	760	None	---	---	---
Fore Bhd clear of trunk ..	---	7.0	3 1/2" x 3 1/2" x 30	810	None	950 x full ht.	None	---
XXXXXXXXXXXX ...	Fwd end	7.5	3" x 2 1/2" x 24	570	---	---	---	---
XXXXXXXXXXXX Machinery Casings on Freeboard XXXXXXXXXXXXXXX Deck ...	Sides	7.5	3" x 2 1/2" x 24	610	To beam top and bottom	610 x 1540	16"	---
XXXXXXXXXXXX ...	Aft end	7.5	90 x 60 x 7	800	None	None	---	---
Machinery Casings within Superstructures not fitted with Class I Closing Appliances ...	Fwd end	7.5	3" x 2 1/2" x 24	600	None	None	---	---
XXXXXXXXXXXX ...	Sides	7.5	3" x 2 1/2" x 24	610	To beam btm. Brackets top	600 x 1720	9"	---
XXXXXXXXXXXX ...	Aft end	7.5	3" x 2 1/2" x 24	600	None	None	---	---
Particulars of Closing Appliances (state if capable of being manipulated from both sides).								
Poop Bulkhead ...	No openings.							
Raised Quarter Deck Bulkhead ...	---							
Pump Room Bulkhead ...	Hinged steel door 7 mm. closed weathertight and operable from both sides.							
Bridge, Forward Bulkhead ...	---							
Forecastle Bulkhead ...	6.5 mm. plates, secured by hook bolts not passing through bulkhead.							
XXXXXXXXXXXX Machinery Casings on Freeboard XXXXXXXXXXXXXXX Deck ...	Hinged steel doors, operable from both sides.							
Exposed Machinery Casings on Superstructure Decks ...	---							
Machinery Casings within Superstructures not fitted with Class I Closing Appliances ...	Hinged steel door, operable from both sides.							
Deckhouses on Flush Deck Ships ...	---							

PARTICULARS OF PROTECTION TO OPENINGS, ETC.

The following diagrams should be used to indicate the positions of cargo and coaling hatchways, gangway, cargo and coaling ports, ventilators, companionways, etc., which would affect the seaworthiness of the ship:—



Particulars of fiddle, funnel and ventilator coamings, engine room skylight and other openings in machinery casing tops and their means of closing:—

Motorship.— Fiddle, funnel and ventilators on top of engine casing, about 8' above poop deck, efficiently constructed and supported. No fiddle openings. Engine room skylight of steel, substantially constructed.

Particulars of Flush Bunker Scuttles:—

None fitted.

Particulars of Companionways:—

None fitted.

Particulars of Ventilators in exposed positions on freeboard and superstructure decks:—

All ventilators on poop- and forecastle decks are 915 mm. high or above, efficiently constructed and supported and provided with means of closing.

Particulars of Air Pipes in exposed positions on freeboard, raised quarter, or superstructure decks:—

All air pipes on poop- and forecastle decks are of steel of goose-neck type, 915 mm. high or above, efficiently constructed and supported, and provided with means of closing.

"LINDESNÄS".

Particulars of Gangway Cargo and Coaling Ports:—

None fitted.

Particulars of Scuppers and Sanitary Discharge Pipes:—

Sanitary discharge pipes from accommodation are led overboard either below freeboard deck in engine room fitted with sluice valve and non-return valve, or above freeboard deck fitted with non-return valve.

Scuppers from steering engine room on freeboard deck are led overboard and fitted with screw plug at inner end, fixed by chain and storm valves at the ship's sides.

Scuppers from accommodation on freeboard deck are led to the engine room bilges with water sealed traps.

Particulars of Side Scuttles:—

Side scuttles on superstructures are of substantial construction and fitted with hinged deadlights.

Vertical distance of Sill of lowest Side Scuttle above top of keel 6.8 Metres.

Particulars of Guard Rails:—

Guard rails fitted on freeboard deck, poop deck aft, forecastle deck of gangway, of substantial construction.

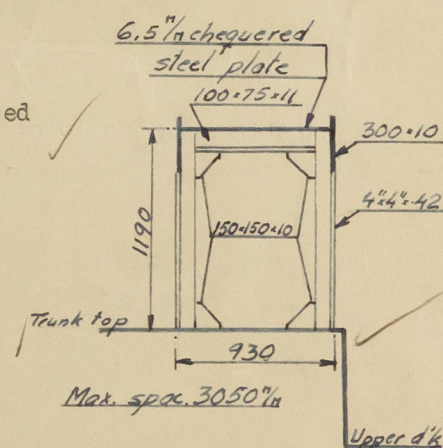
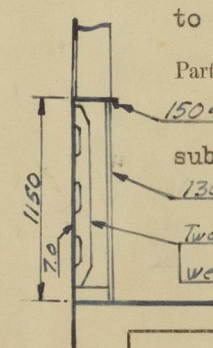
Three rods and stanchions spaced about 1400 mm. Height 1050 mm.

Bulwark on fore part of poop (16 Metres) as per sketch. No guard rails fitted to the sides of the trunk.

Particulars of Gangways, Lifelines, etc.:—

Gangway is fitted between poop- and forecastle decks as per sketch, substantially constructed and supported.

Lifeline is fitted port side on trunk top between forecastle and poop deck.



Particulars of Freeing Arrangements.

	Length of Bulwark	Height of Bulwark	Size of Freeing Ports	Number each side	Area each side	Rule area each side
After Well	Open rails.					
Forward Well						

State position of each freeing port { After Well:—
(P. and A. position and height above deck edge) { Forward Well:—

State whether the freeing ports are fitted with shutters, bars, or rails, and give particulars of such:—

Additional area where sheer is less than standard.



© 2020

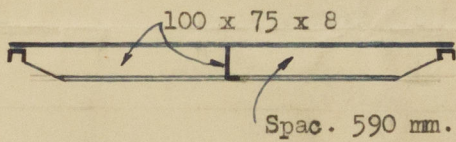
Lloyd's Register
Foundation

002289-002297-0080 1/2

PARTICULARS OF PROTECTION TO OPENINGS, ETC.

HATCHWAYS ON FREEBOARD AND SUPERSTRUCTURE DECKS.						
		Trunk top		Fbd dk	Forecastle deck	
Description of Hatchway		To Cargo Tanks	To Cofferdam "A"	To Cross Bkrs "B"	To Dry Cargo H.	To Stores "C"
Dimensions of Hatchway	Length Breadth	1300 700	620 620	570 500	2000 3000	700 600
COAMINGS	Height above Deck/Trunk	300	75	230	815	610
	Thickness	10	10	13	11	6.5
	Sides	10	10	13	11	6.5
	Stiffeners	---	---	---	150x75x9	---
	Brackets, Stays	---	---	---	---	---
HATCH BEAMS	Number	---	---	---	---	---
	Spacing	---	---	---	---	---
	Scantling and Sketch	---	---	---	---	---
	Bearing Surface	---	---	---	---	---
FORE AND AFTERS	Number	---	---	---	---	---
	Spacing	---	---	---	---	---
	Unsupported Lengths	---	---	---	---	---
	Scantling* and Sketch	---	---	---	---	---
HATCH COVERS	Material	Steel	Steel	Steel	Steel	Steel
	Thickness	10 Stiff.	10	11	7.5 Stiff.	7.0
	How fitted	Hinged	Bolted	Bolted	Hinged	Hinged
	Bearing Surface	22	75	90	50x25	---
Spacing of Cleats		Closed WT by 6	Closed WT by 20 -	Closed WT by 20 -	Closed WT by 1" bolts max. spac.	Closed WT by 4
Number of Tarpaulins		toggles	7/8" bolts	7/8" bolts	460 mm.	toggles.
*Are wood fore and afters steel shod at all bearing surfaces? ---						
Are battens and wedges efficient and in good condition? Yes						
Are tarpaulins in good condition and in accordance with rule requirements? Yes						
Are lashings provided in accordance with rule requirements? ---						

Particulars of any special features :—



Hatch cover on forecastle deck.
(Section alongship)

A steel watertight trunk is fitted to enclose the cargo hatch inside the forecastle, having scantlings as follows:—

Plating 6.5 mm. - Stiffeners 65 x 90 x 6.5 with no end attachments and spaced 670 - 750 mm.