

YARD N^o 305 —S. S. "MINARD"— MIDSHIP SECTION

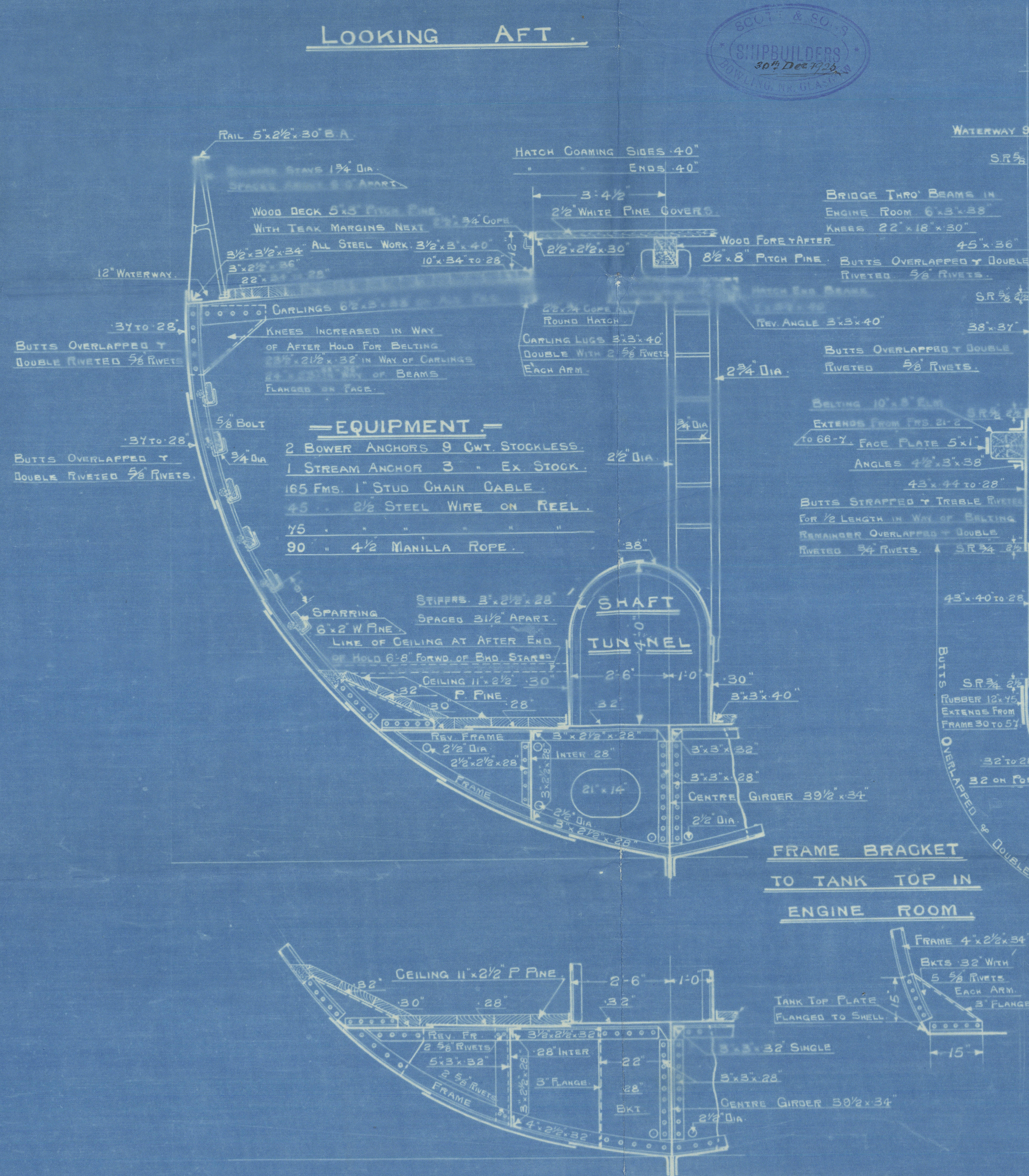
SCALE 1/2" = ONE FOOT.

RIVETING.
RIVETS IN FRAMES REVERSE FRAMES & FLOORS 5/8"
KEELSONS 3/4"
RIVETS IN STRINGER & TIE PLATES 3/4" & 5/8"
BAR ON UPPER DECK 3/4" on R.Q.D. 5/8"

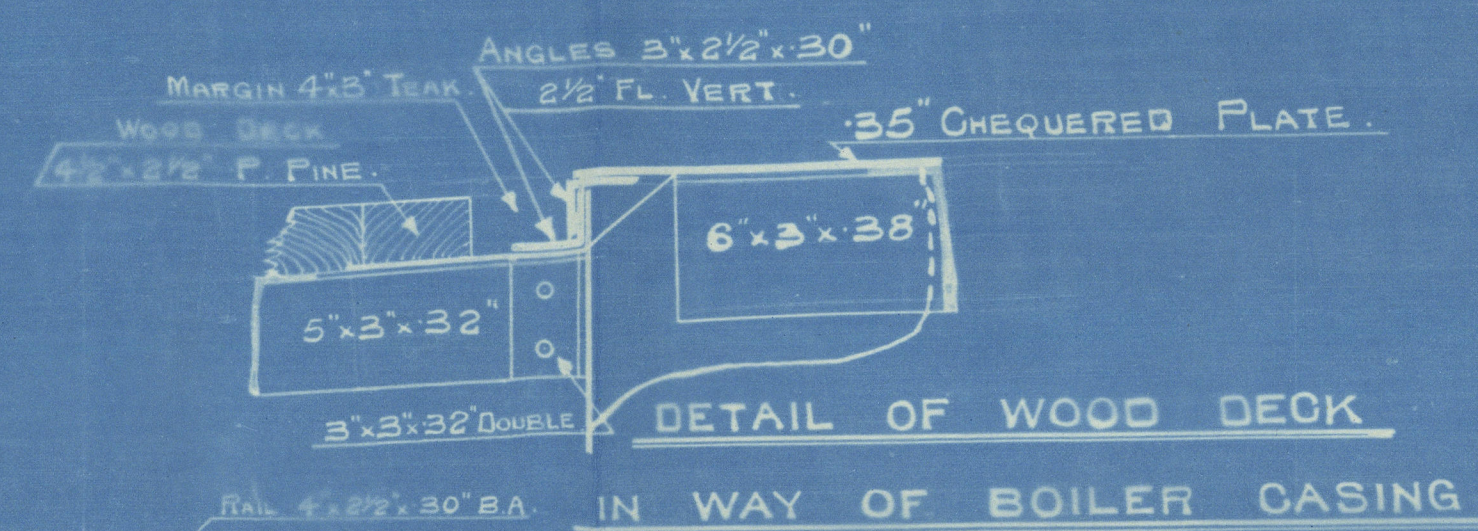
DIMENSIONS: LENGTH B.P. 143'-0"
BREADTH MLD. 25'-0"
DEPTH MLD. TO U. DK. 10'-3"
R.Q.Dk. 3'-6" ABOVE UPPER DK.

BRIDGE DECK 7'-0" ABOVE UPPER DK.
FORECASTLE DECK 7'-0" ABOVE UPPER DK.

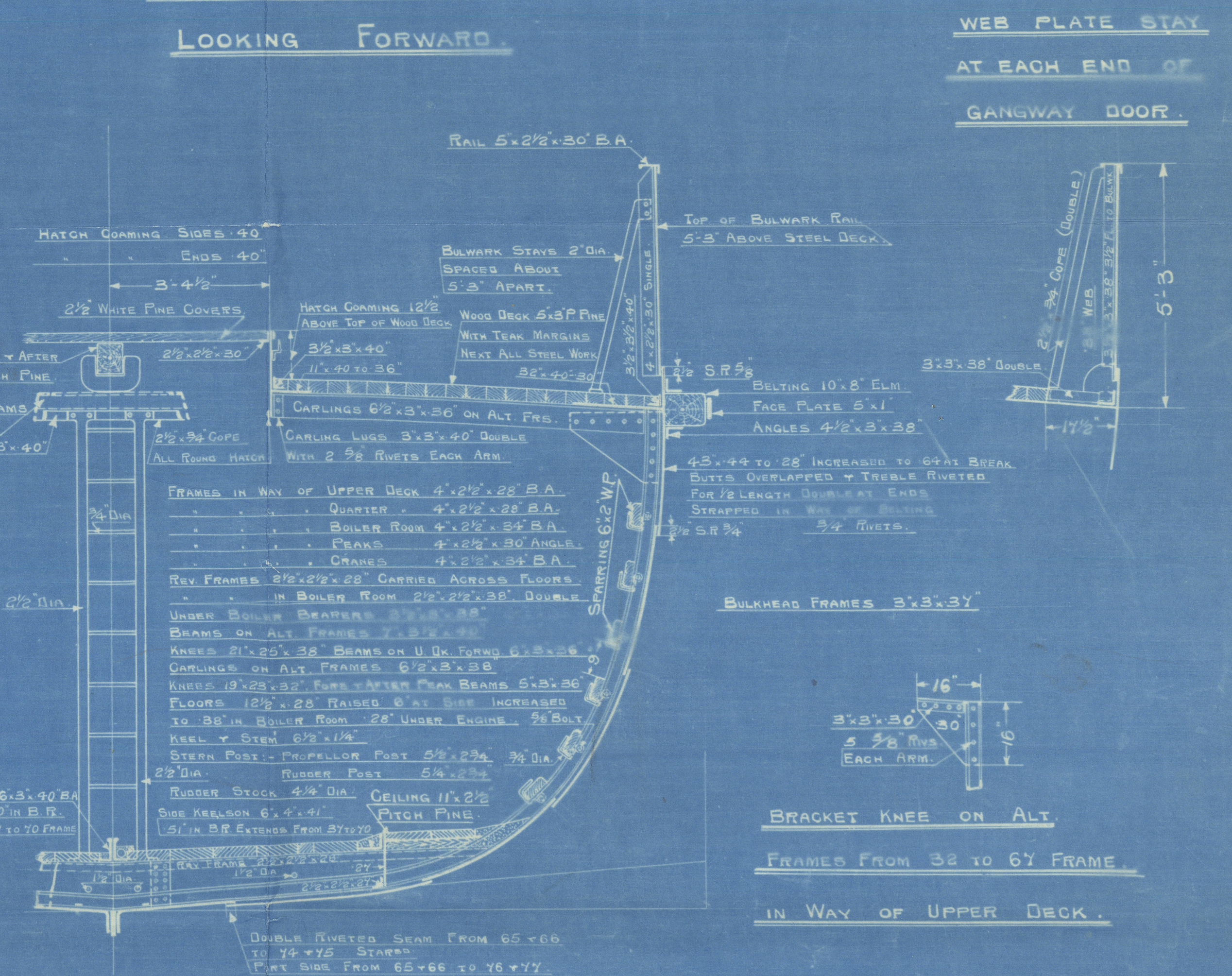
SECTION IN WAY OF QUARTER DECK AT FRAME N^o 22 LOOKING AFT.



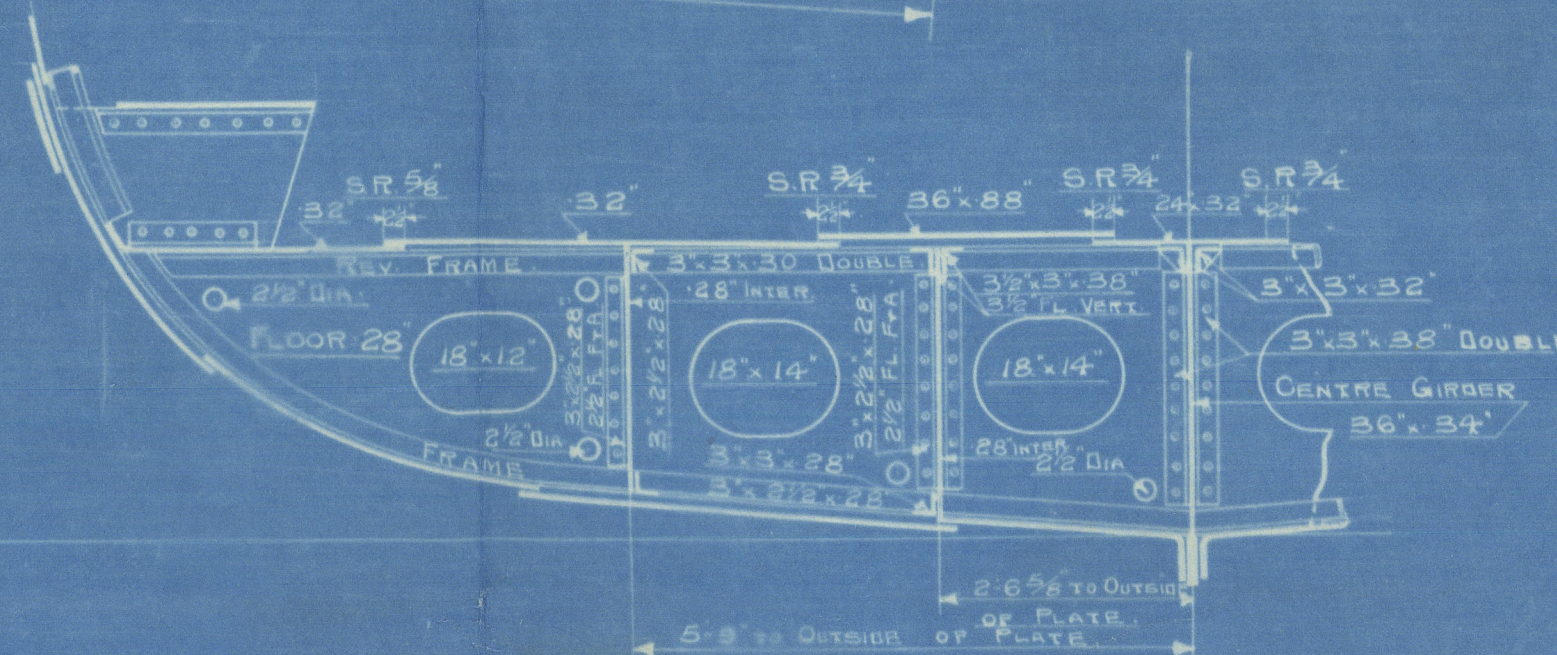
SECTION OF INTERMEDIATE BRACKET FLOOR IN WAY OF HOLD AT FRAME N^o 24.



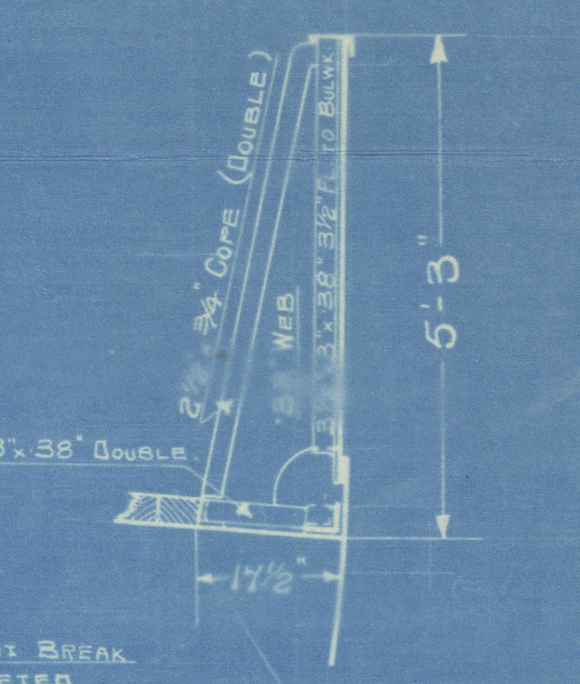
SECTION IN WAY OF UPPER DECK AT FRAME N^o 57 LOOKING FORWARD.



SECTION OF FLOOR IN WAY OF ENGINE SEAT AT FRAME N^o 32.



WEB PLATE STAY AT EACH END OF GANGWAY DOOR.



BRACKET KNEE ON ALT. FRAMES FROM 32 TO 67 FRAME IN WAY OF UPPER DECK.



S.S. No 305-

Scott & Son

Bowling -

Corrected Indulgence

Section

S.S. MINARD-

GLASGOW REPORT No. 45333



© 2020

Lloyd's Register
Foundation

602279-002288-0127