

N<sup>o</sup> 276.

# STERNPOST & RUDDER.

Scale 1" = 3' - One Foot.

1<sup>st</sup> LONG<sup>th</sup> N<sup>o</sup> =  $220 \times 16.75 = 3685$

AREA OF RUDDER ABAFT FORE EDGE OF MAIN PIECE =  $61.5 \times 30$  FT.

DISTANCE OF C.G. OF RUDDER ABAFT C<sup>e</sup> LINE OF PINTLES =  $2.73$  FT.

$A \times D = 61.5 \times 2.73 = 167.9$  not exceeding 168.

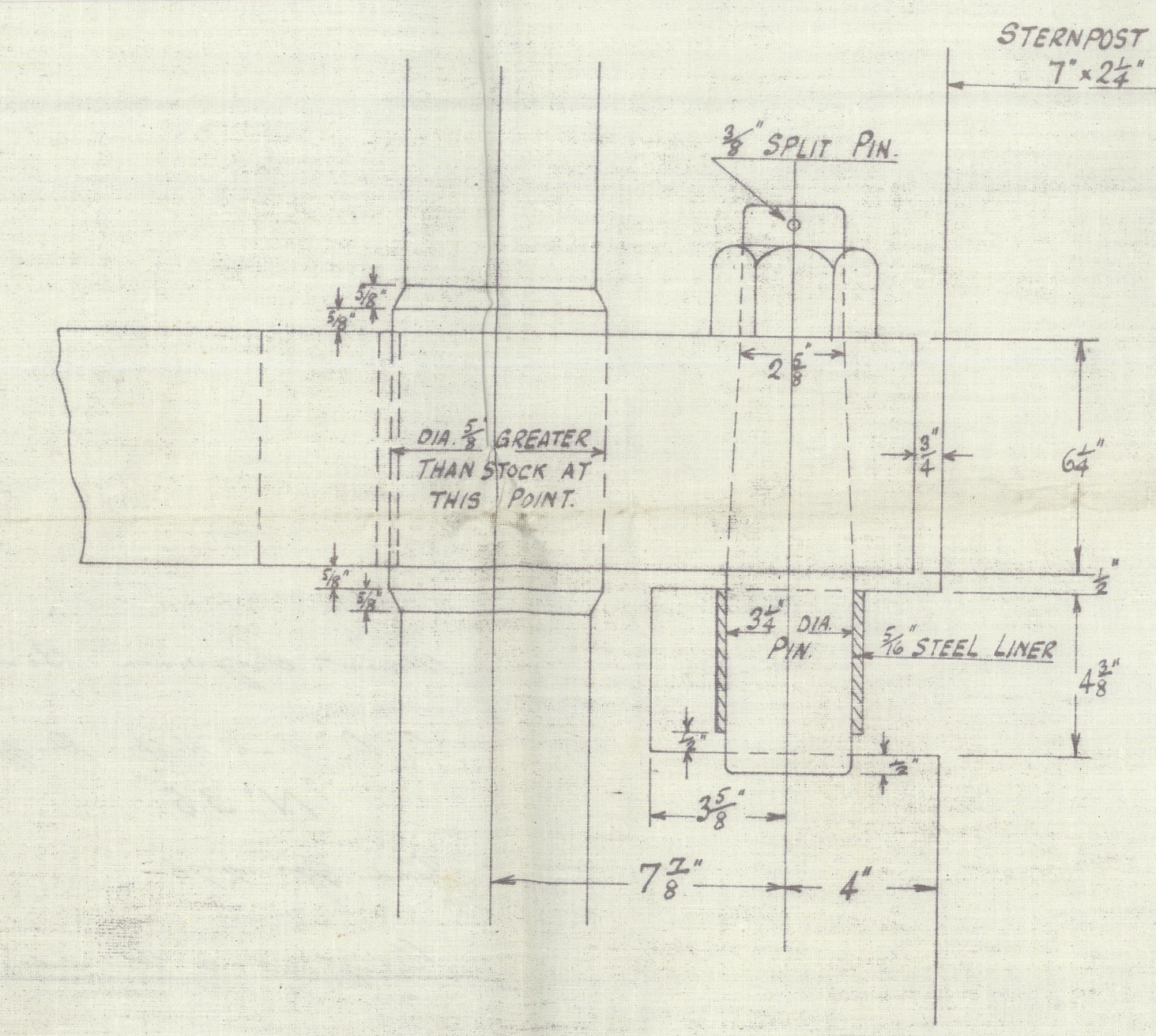
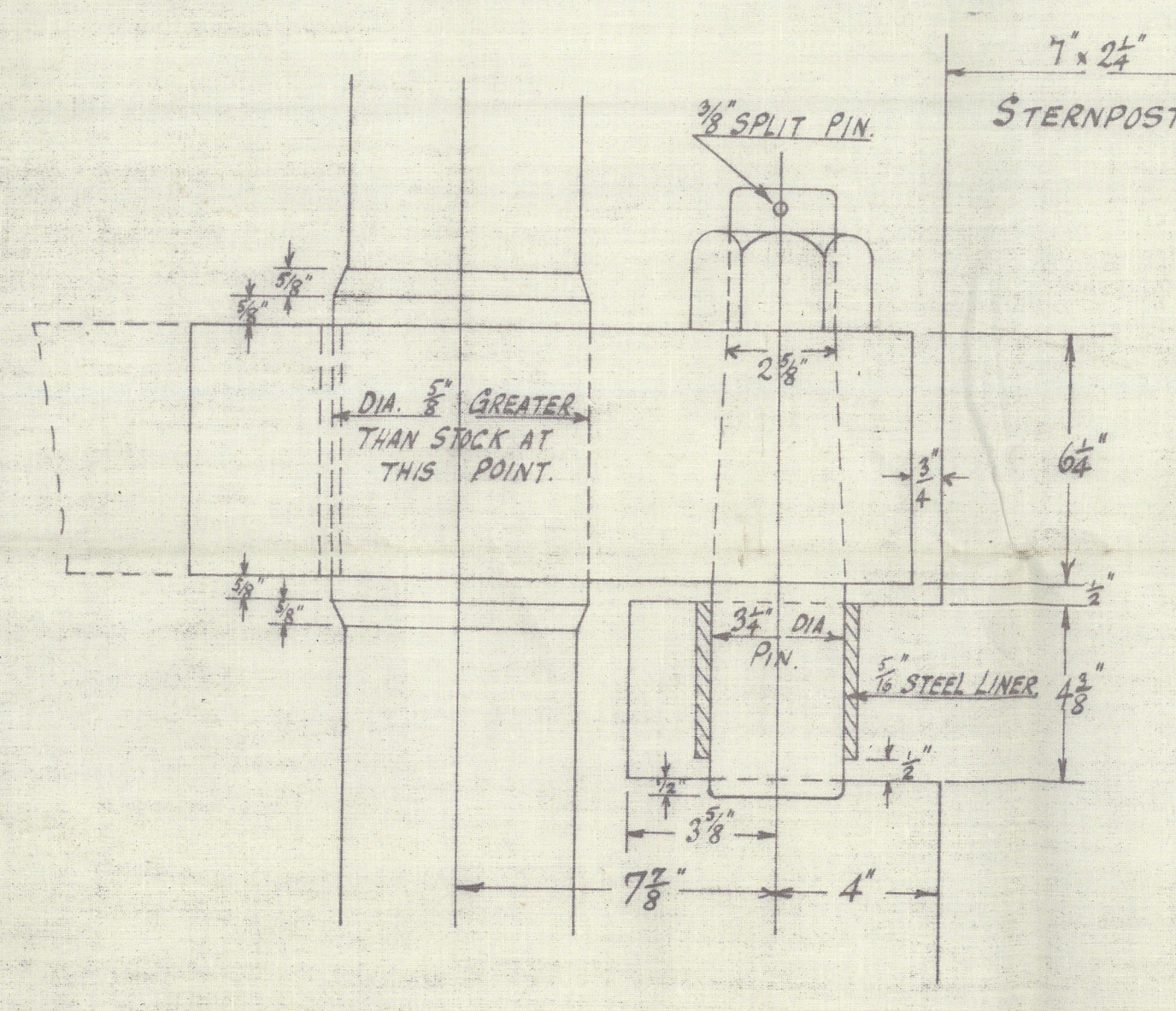
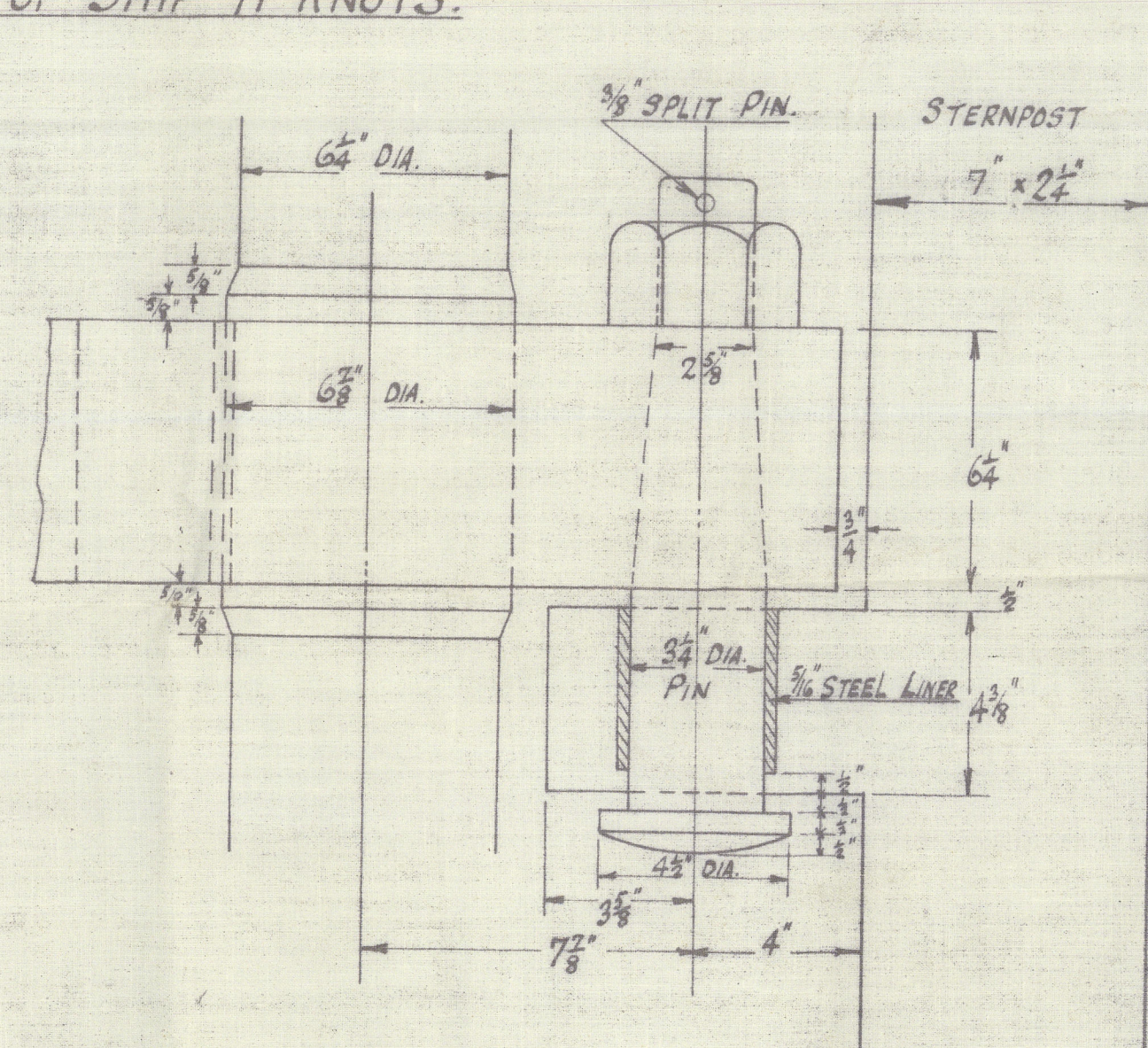
SPEED OF SHIP 11 KNOTS.

ALL TO LLOYD'S REQUIREMENTS LATEST RULES. TO CLASS 100 A.1.

STERNPOST OF BEST FORGED IRON.

RUDDER STOCK OF BEST FORGED IRON.

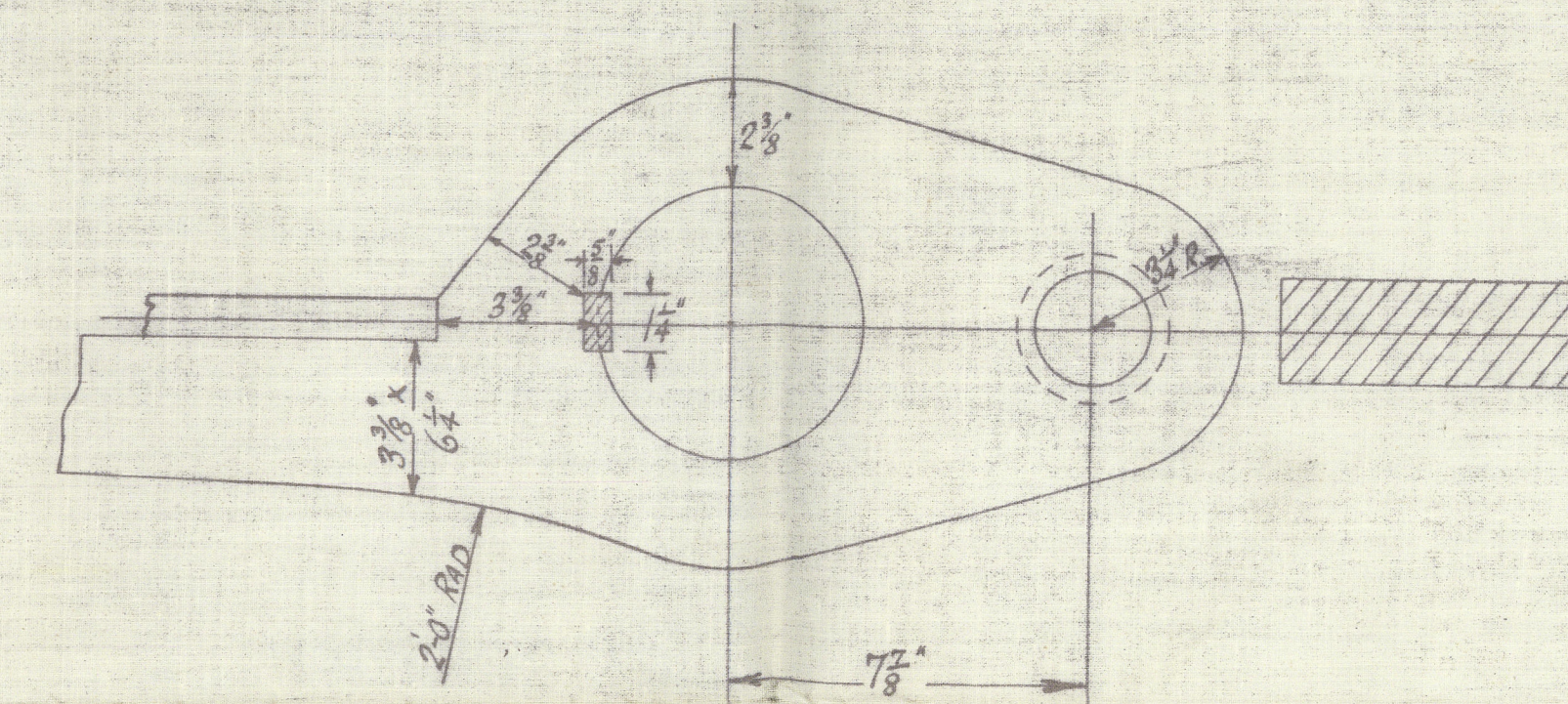
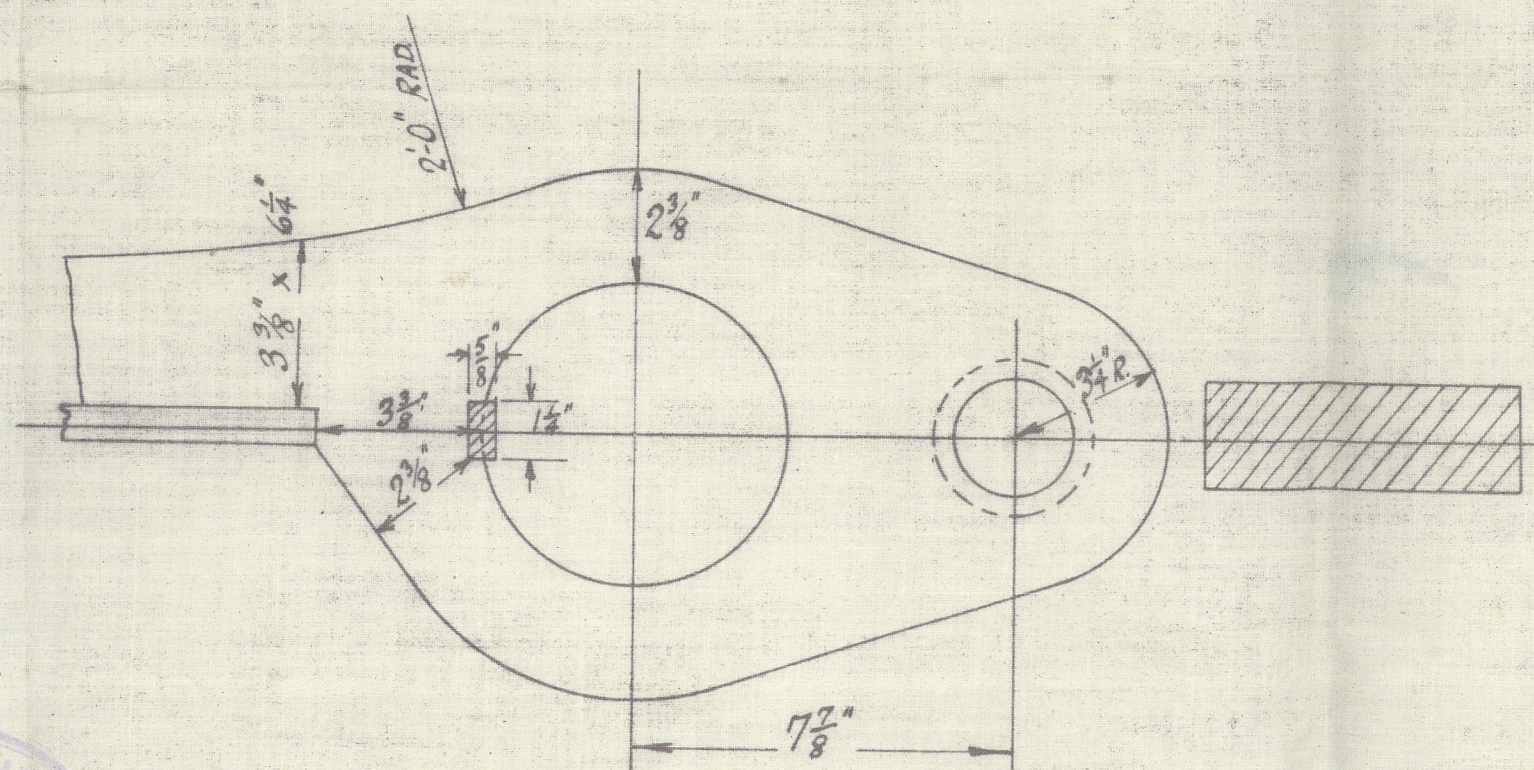
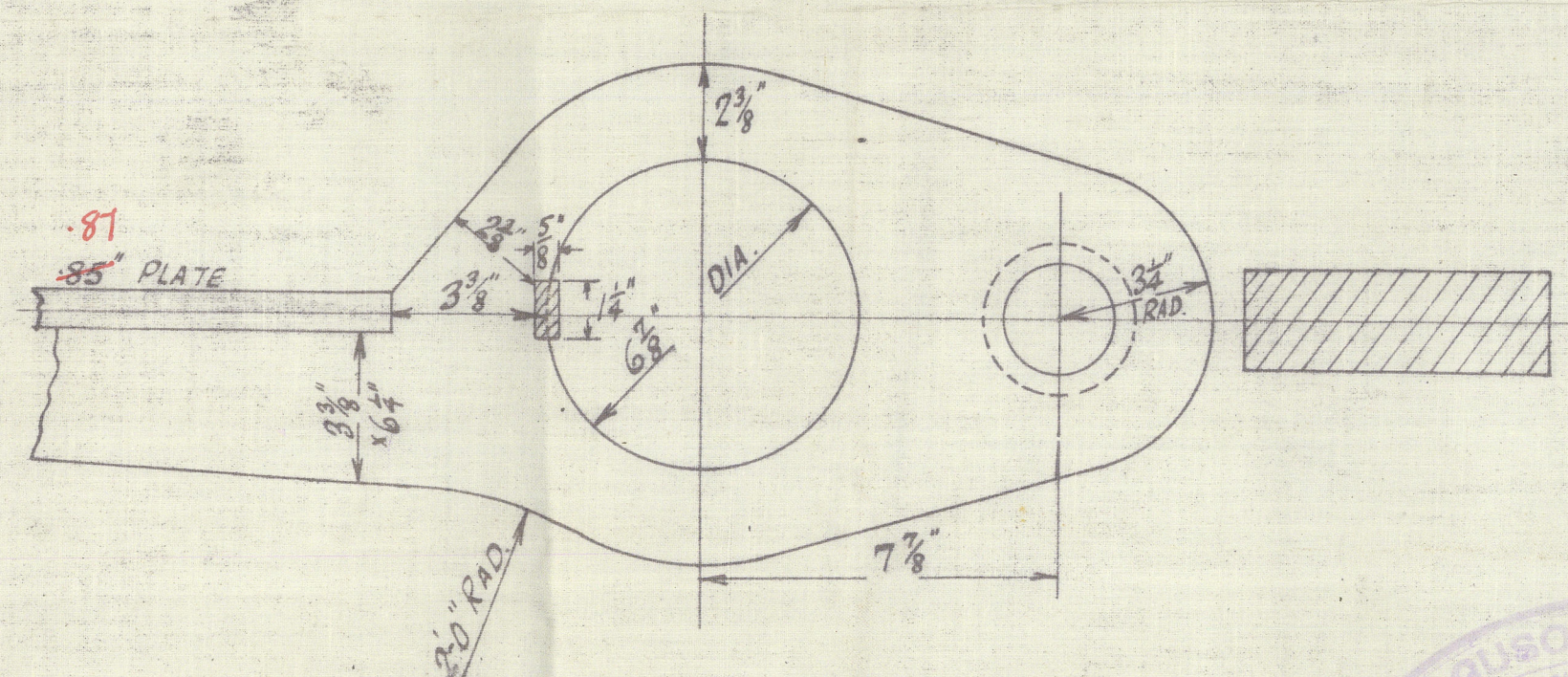
RUDDER FRAME OF BEST FORGED IRON.



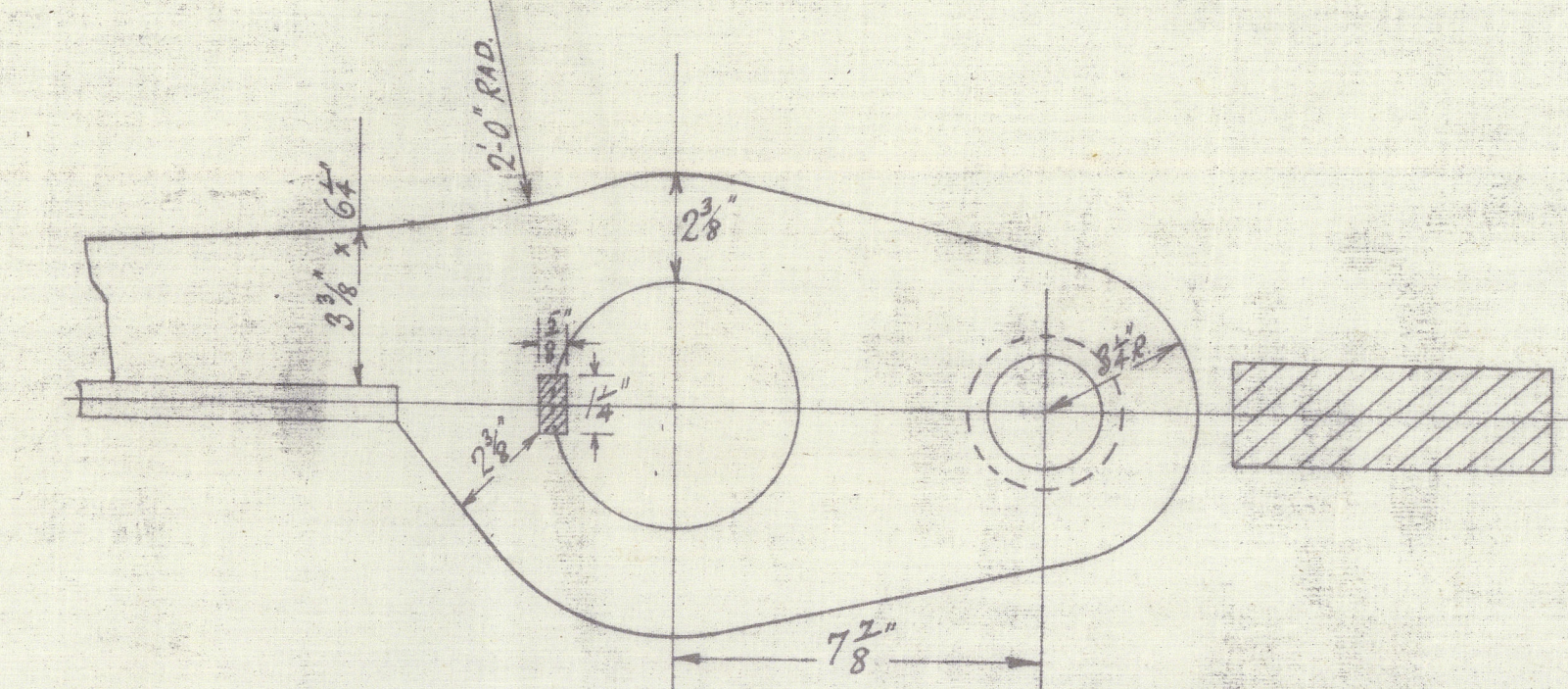
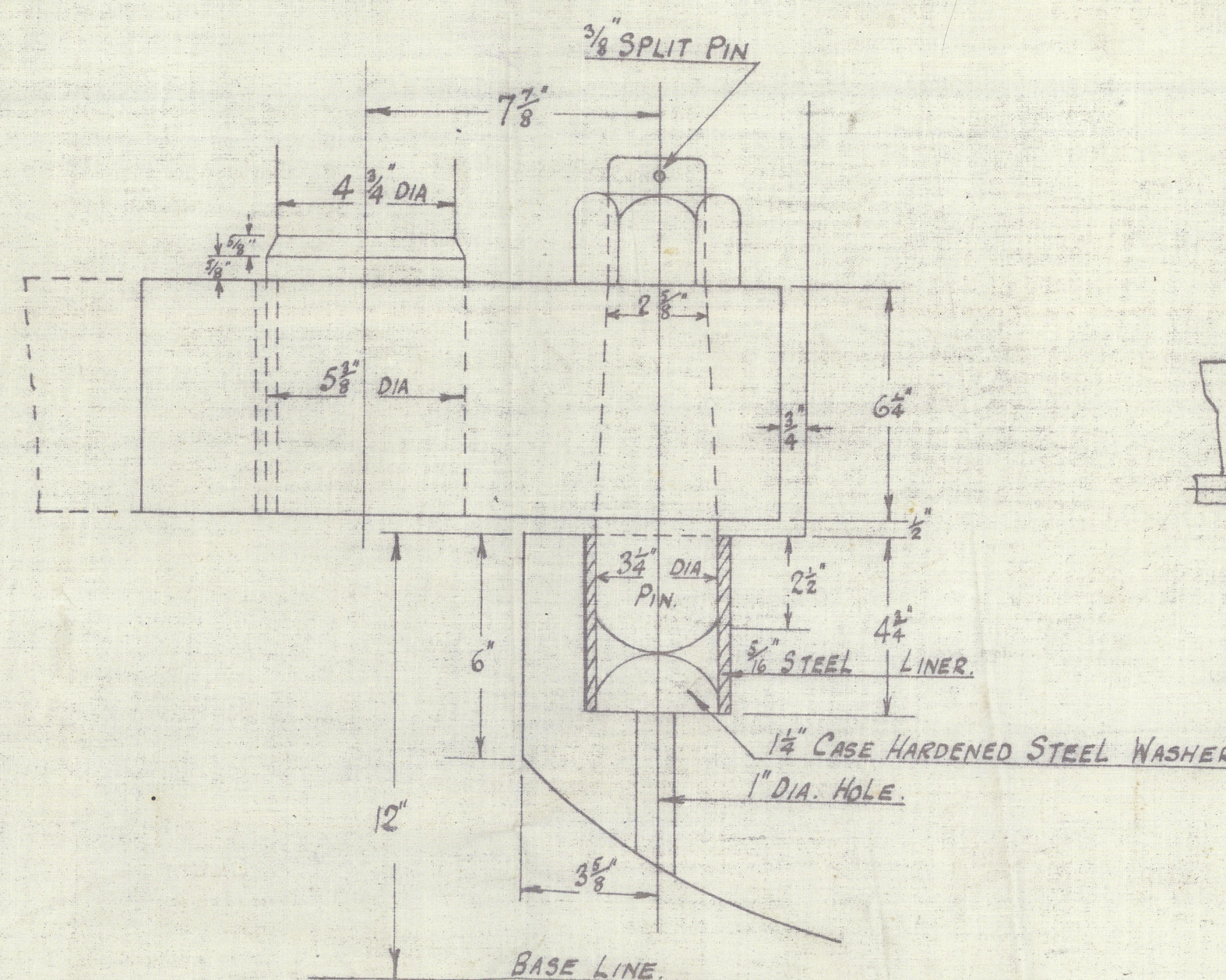
DETAIL OF TOP PINTLE & GUDGEON 'A'.

DETAIL OF PINTLE & GUDGEON 'B'.

DETAIL OF PINTLE & GUDGEON 'C'.



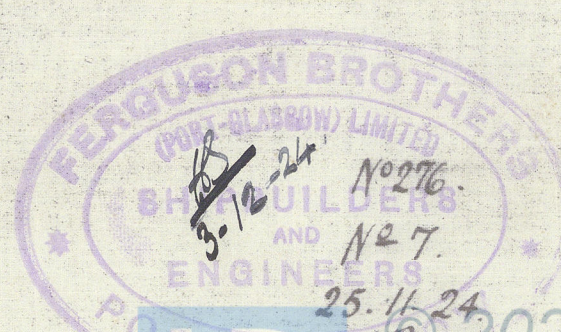
FERGUSON BROS.  
(PORT-GLASGOW) LTD  
SHIPBUILDERS, ENGINEERS  
& DREDGE BUILDERS.  
PORT-GLASGOW.



DETAILS OF BOTTOM PINTLE & GUDGEON 'D'.

APPROVED  
LLOYD'S REGISTER OF SHIPPING

James Watson & Co. Ltd.



Lloyd's Register Foundation



Messrs. Seymour Bros.

Esq. Geo. H. Hopper Dodge

"N<sup>o</sup> 35"

Yard No. 276.

Steepost & Rudder.

Genl. Rept. No. 18437.



© 2020

Lloyd's Register  
Foundation

002279-002288-0019